

San Bernardino Valley College Landscape Master Plan DRAFT



SPURLOCK NAC

October 4, 2023





Fault Line Promenade



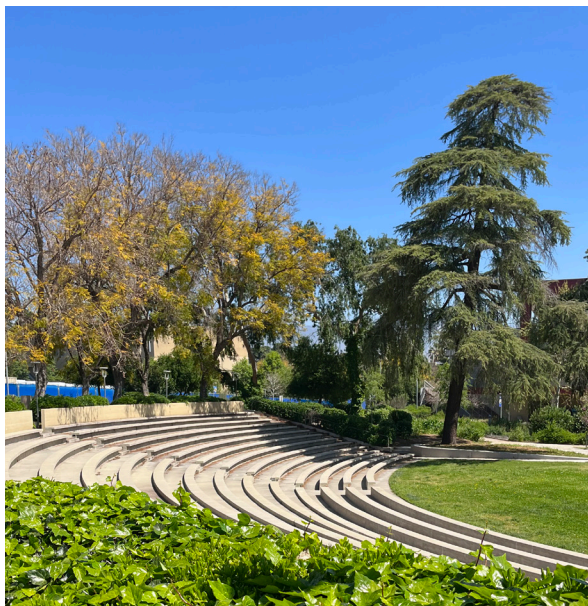
Health and Life Sciences Courtyard



Oak Grove



Bio-garden



Greek Theater



Auditorium

Design Principles

- Reflect unique character of SBVC
- Enhance arrival and wayfinding
- Create functional outdoor program and amenities
- Use and interpret sustainable strategies
- Beautify the landscape
- Campus-wide enriched outdoor environment

Master Plan Scope

These comparative aerial views of the campus show the majority of existing trees, hardscape, parking and courtyards to remain. The landscape master plan supplements the existing campus features and frameworks with critical new features like seating, shade, outdoor classrooms and learning gardens as described in more detail in the following sections. The majority of recommendations address enhancements to the community-facing edges and entries of the campus, revitalization of the campus core (the Glade), clarification of circulation and wayfinding and introduction of beautiful, durable, sustainable planting strategies to connect, frame and enrich these spaces.



Current Campus Plan



Proposed Master Plan

Master Plan Components



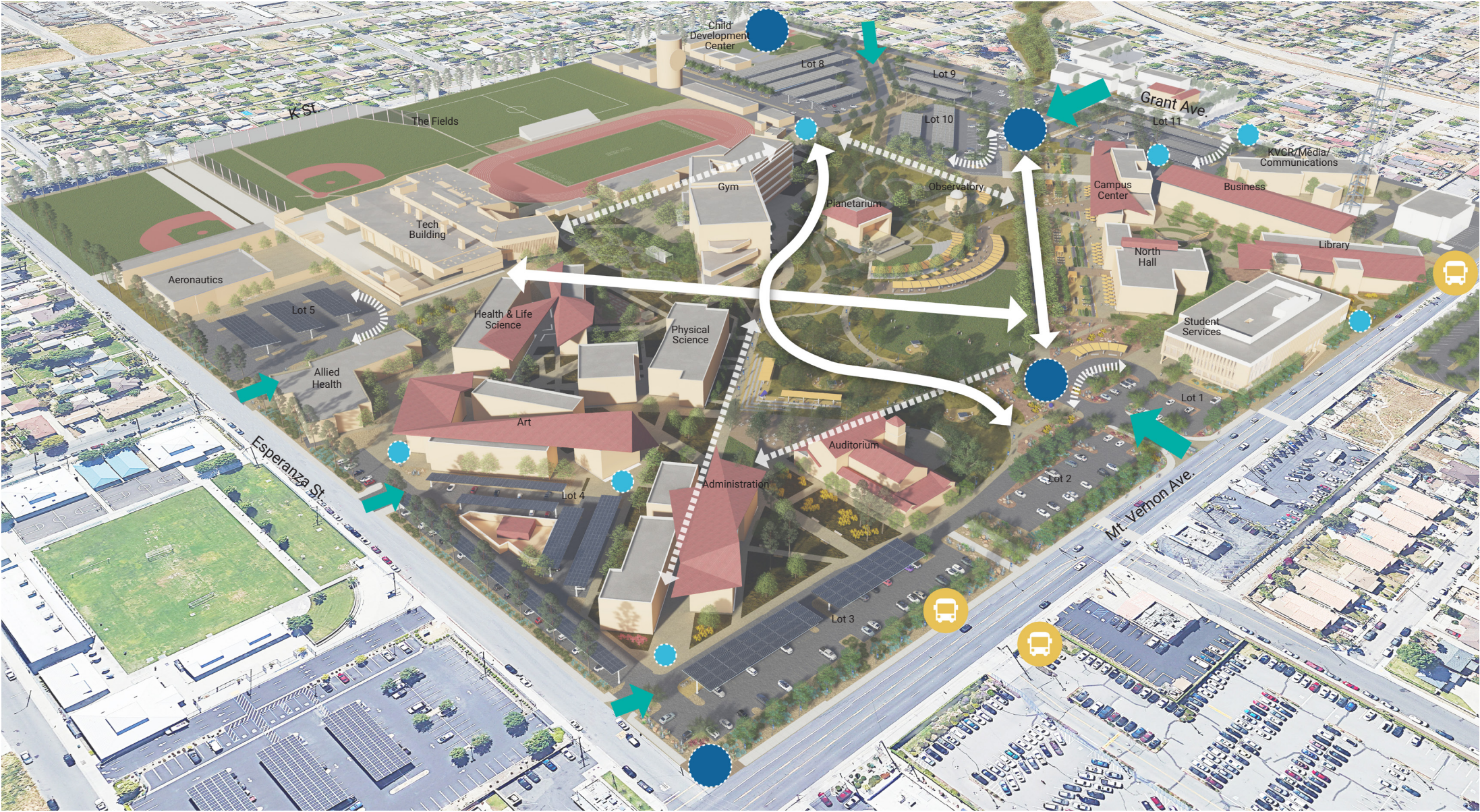
- Legend**
- 1 Drop Off
 - 2 Arrival Plaza
 - 3 Event Lawn
 - 4 Central Event Plaza
 - 5 Shaded Greek Theater
 - 6 Shade Structure
 - 7 Fault Line Promenade
 - 8 Outdoor Classrooms
 - 9 Outdoor Cafe
 - 10 Business Quad
 - 11 Auditorium Event Area
 - 12 Arts Grove
 - 13 Shaded Amphitheater
 - 14 KVCR Event Patio
 - 15 Oak Trail
 - 16 Oak Savanna
 - 17 Richardson Walk
 - 18 Community Garden
 - 19 Medicinal Garden
 - 20 Bio Garden
 - 21 Mojave Desert Garden
 - 22 Stormwater Garden
 - 23 Geology Garden
 - 24 Mediterranean Garden
 - 25 Chaparral Education Garden
 - 26 Foothills Education Garden
 - 27 Indigenous Garden
 - 28 Collaboration Space
 - 29 Informal Seating Area
 - 30 Directory Kiosk
 - 31 New Crosswalk
 - 32 Monument Signage
 - 33 E-Bike Charging & Bike Corral
 - 34 Solar Shade Structure
 - 35 Greenbelt Connection to Student Housing
 - 36 EV Charging Station

Overall Campus View to Southeast

Existing core SBVC campus open space framework elements are maintained and enhanced including the North Arrival Plaza, Fault Line Promenade, Arts Plaza and Oak Garden. Site enhancements include additional shade via a combination of architectural shade structures, pavilions and canopy trees, strategically located close to main circulation, seating and gathering spaces; native and xeric planting with iconic desert displays at entry and arrival points; purposeful use of lawn at limited event areas; strengthened circulation framework to improve wayfinding; small seating clusters, outdoor classrooms and learning gardens and large event and gatherings spaces to support the full range of community activities throughout the day. The following pages overlay framework elements on this aerial view including circulation, program and gathering, gardens and landscape spaces and sustainability measures that align with Envision Verification Program.



Arrival and Circulation



- Legend**
- Drop Off
 - Major Pedestrian Connection
 - Secondary Pedestrian Connection
 - Major Vehicular Entry
 - Vehicular Entry
 - Main Visitor Arrival
 - Pedestrian Entry
 - Transit

Visitor arrival starts at the street with enhanced streetscape planting, iconic desert specimens and monument signage at northwest and southeast campus corners. Pedestrian entries receive similar planting treatment and signage. Major interior arrival plazas are clearly defined through accent hardscape and planting that frame views into the campus along main circulation corridors. The existing Oak Garden trail is extended to the western edge of the campus, intersecting and connecting important secondary paths and promenades while providing access to new seating and program areas in the campus core.



Pedestrian Plaza



Promenade



Pedestrian Pathway



Drop Off



Welcoming Arrival Experience



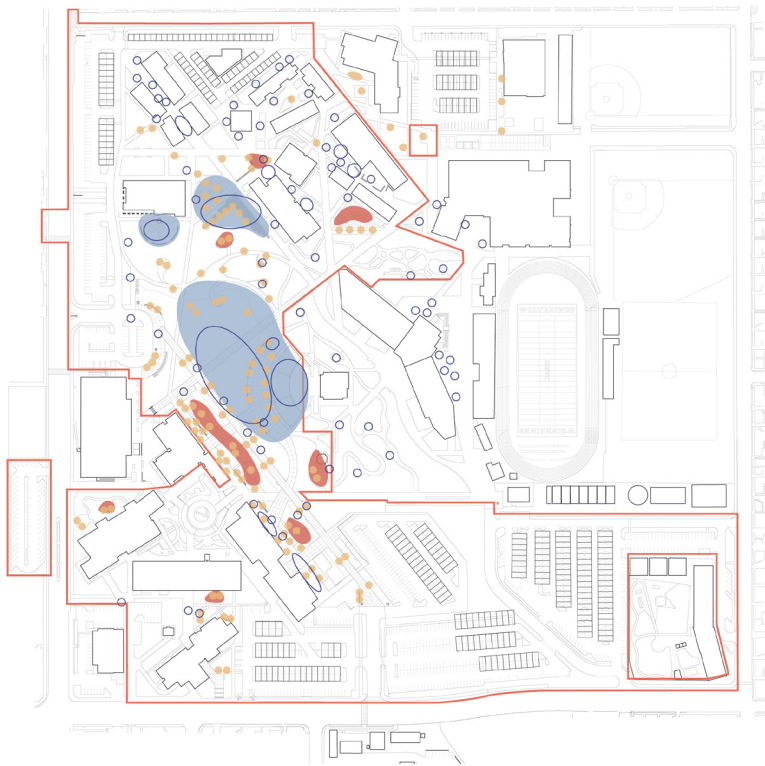
Program and Gathering



Additional seating and gathering spaces at a variety of scales accommodate the full range of informal and organized campus activities. Seating areas are located close to circulation for convenience and to encourage interaction and connection. Where possible, seating is located adjacent to existing trees and structures to take advantage of existing shade. New shade structures are proposed at the Greek Amphitheater and adjacent Event Plaza, existing seating steps east of the Auditorium, north Arrival Plaza and proposed Outdoor Classrooms. Outdoor collaboration and classroom spaces include power supplies and charging stations to support studying, and event spaces include power for special audio-visual needs. Large event spaces are located close to vehicular-rated circulation to facilitate equipment loading.

- Legend**
- Small
 - Medium
 - Large
 - Existing Seating

New Outdoor Seating and Program		
Space Type	Description	Total SF/QTY
Small Gathering Areas		
Informal Seating	Fixed and movable lounge seating, benches and seatwalls	306 (QTY)
Cafe Seating	Fixed and movable tables and chairs adjacent to buildings	436 (QTY)
Collaboration Spaces	Fixed and movable seating with power pedestals along circulation	258 (QTY)
Medium Gathering Areas		
Outdoor Classrooms	Shaded classroom spaces for up to 30 people	3500 (S.F.)
Learning Gardens	Includes geology, community, indigenous, medicinal and pollinator gardens	50,615 (S.F.)
Large Gathering Areas		
Event Plaza	40' paved multi-purpose esplanade w/ shade structure	16,268 (S.F.)
Shaded Amphitheater	Shade structure at existing Greek Amphitheater	4,700 (S.F.)
Event Lawn	Multi-purpose lawn serving the campus core	46,807 (S.F.)
Arts Plaza	Tree bosque plaza w/ multi-level seatwalls and shade structure	11,530 (S.F.)
Auditorium Event Area	Enlarged auditorium event paving	5,120 (S.F.)



Learning Landscapes



Legend

- Iconic Planting
- Educational Garden
- Native Plant Communities
- Stormwater Treatment
- Streetscape
- Multi-purpose Lawn

The SBVC community and leadership has requested native plant materials be incorporated into the campus landscape framework to reinforce identity and a unique sense of place. This creates opportunities to thoughtfully group and curate plants to represent distinct regional communities such as desert, foothill chaparral and oak savanna; emphasize ethnobotanical uses such as medicinal and edible plants and larger ecological topics such as stormwater treatment, drought tolerant and pollinator gardens. The Landscape Master Plan proposes to expand on the success of existing education and demonstration gardens through the thoughtful selection and placement of thematic plant palettes that support both campus identity as well as pedagogic goals.



Iconic Planting



Educational Garden



Native Plant Communities

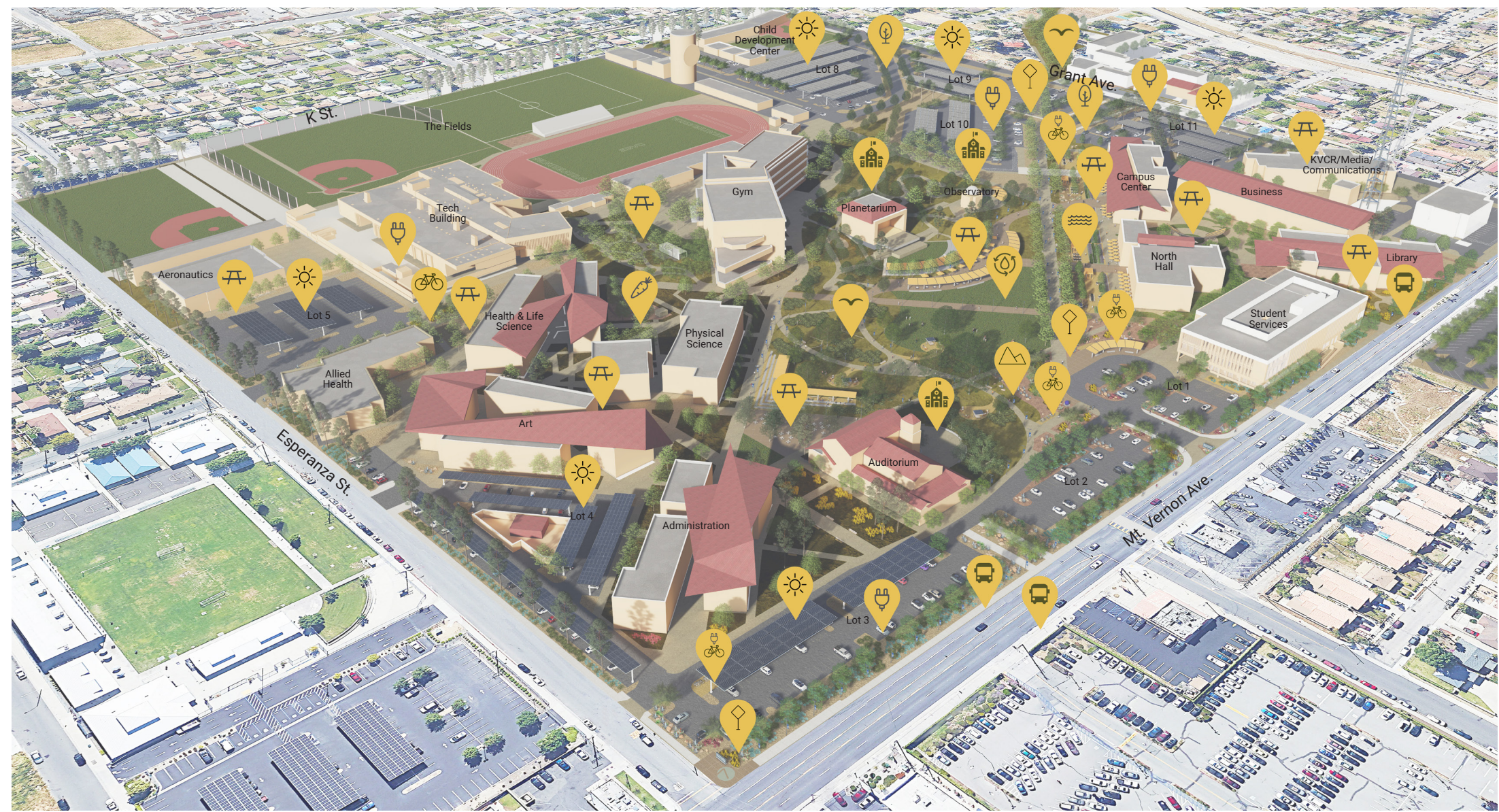


Stormwater Treatment



Streetscape

Sustainability



Legend

- Improve Community Quality of Life with Community Garden
- Improve Community Mobility with Bike Facilities
- E-Bike Charging Stations
- Encourage Sustainable Transportation
- Improve Access and Wayfinding
- Preserve Historic and Cultural Resources
- Enhance View and Local Character
- Enhance Public Space and Amenities
- Use Renewable Energy with Solar Panels
- Reduce Operational Water Consumption
- Manage Stormwater
- Enhance Functional Habitats
- EV Charging Stations
- Tree Canopy to Reduce Urban Heat Island Effect



Community Garden



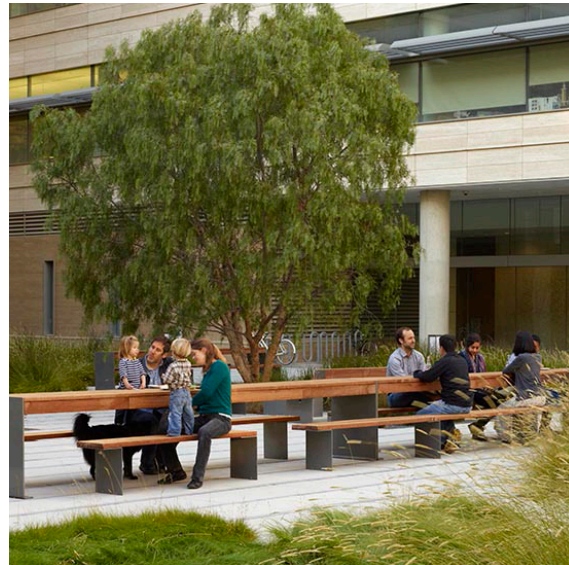
Mobility: Bike Storage



Renewable Energy: Solar Panels

The Landscape Master Plan incorporates a diverse set of strategies to achieve SBVC’s sustainability goals and align with Envision Verification Program. These include reducing the heat island effect through installation of shade structures, increasing the tree canopy and limiting hardscape where possible; treating stormwater run-off by draining hardscape to adjacent planting. Locating stormwater treatment areas in low-lying areas of the campus and designing them to be an amenity and learning environment; conserving water through improved irrigation efficiency and the use of native and local adapted plant material; photo-voltaic installations at parking lots and other shade structures; using locally sourced and sustainably manufactured products; encouraging human-powered transportation by improving pedestrian connections and expanded bike facilities; accommodating on-site food production by creating an edible garden for community use.

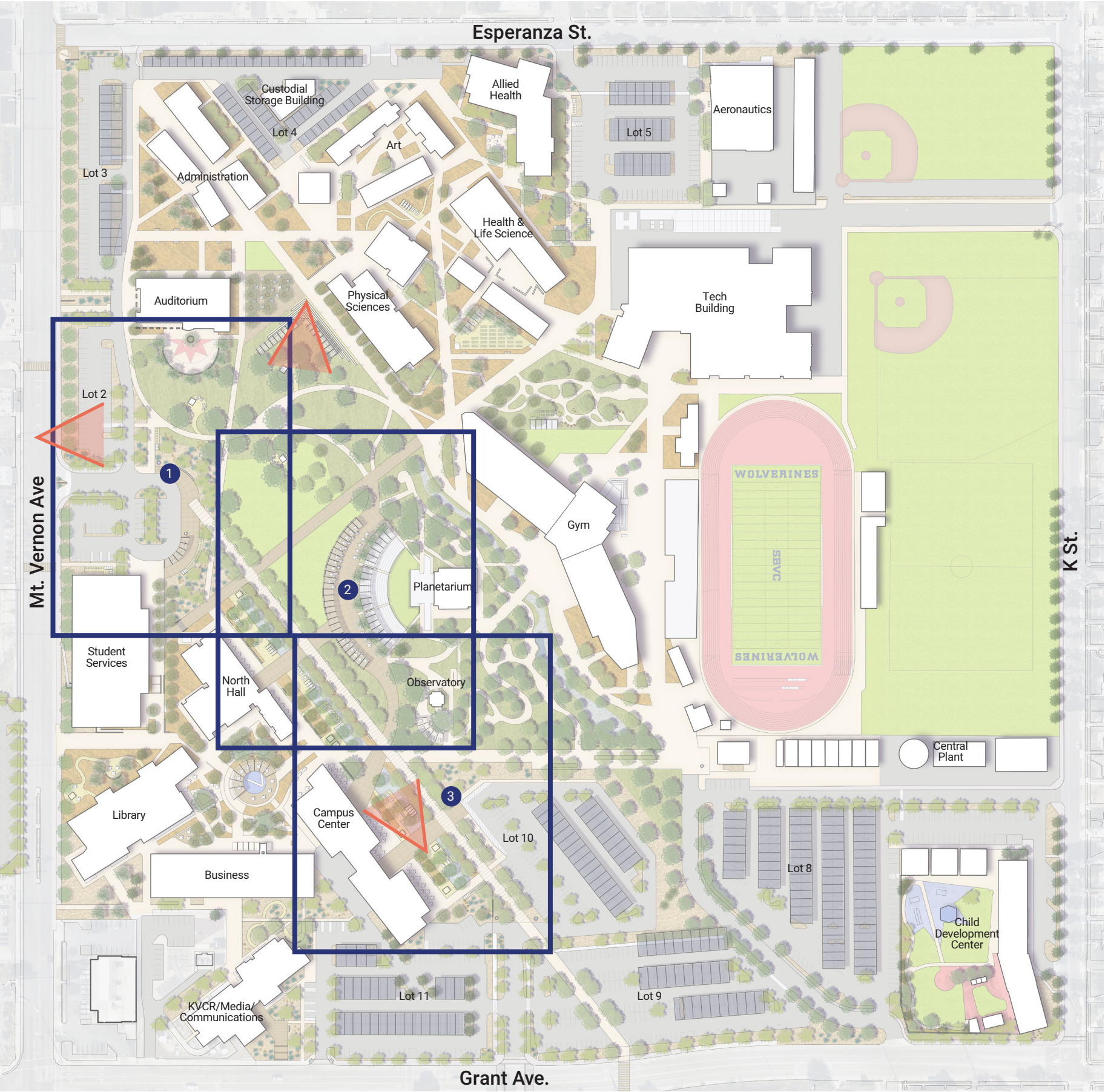




Sustainability Goals

- **Shade areas** increase by 22,000 square feet
 - 1,000 individual **outdoor seats**
 - 84,000 square feet of **event and gathering space**
 - 54,000 additional square feet of **outdoor classrooms and learning gardens**
 - 140,000 square feet of **photo-voltaic panels**
 - Additional **bike parking spaces** including **E-bike charging stations** to meet LEED Gold Criteria
-
- 85% reduction in **Turf Area**
 - 90% increase in **Native Planting**
 - 33% increase in **Shade Trees**
 - 64% reduction in **Water Use**
-
- Decreased **maintenance**, including mowing, pruning, pesticides and fertilizer application
 - Higher-efficiency **irrigation**, including weather-based controllers, low-flow bubblers, high-efficiency rotors and drip irrigation

Master Plan Focus Areas



Legend

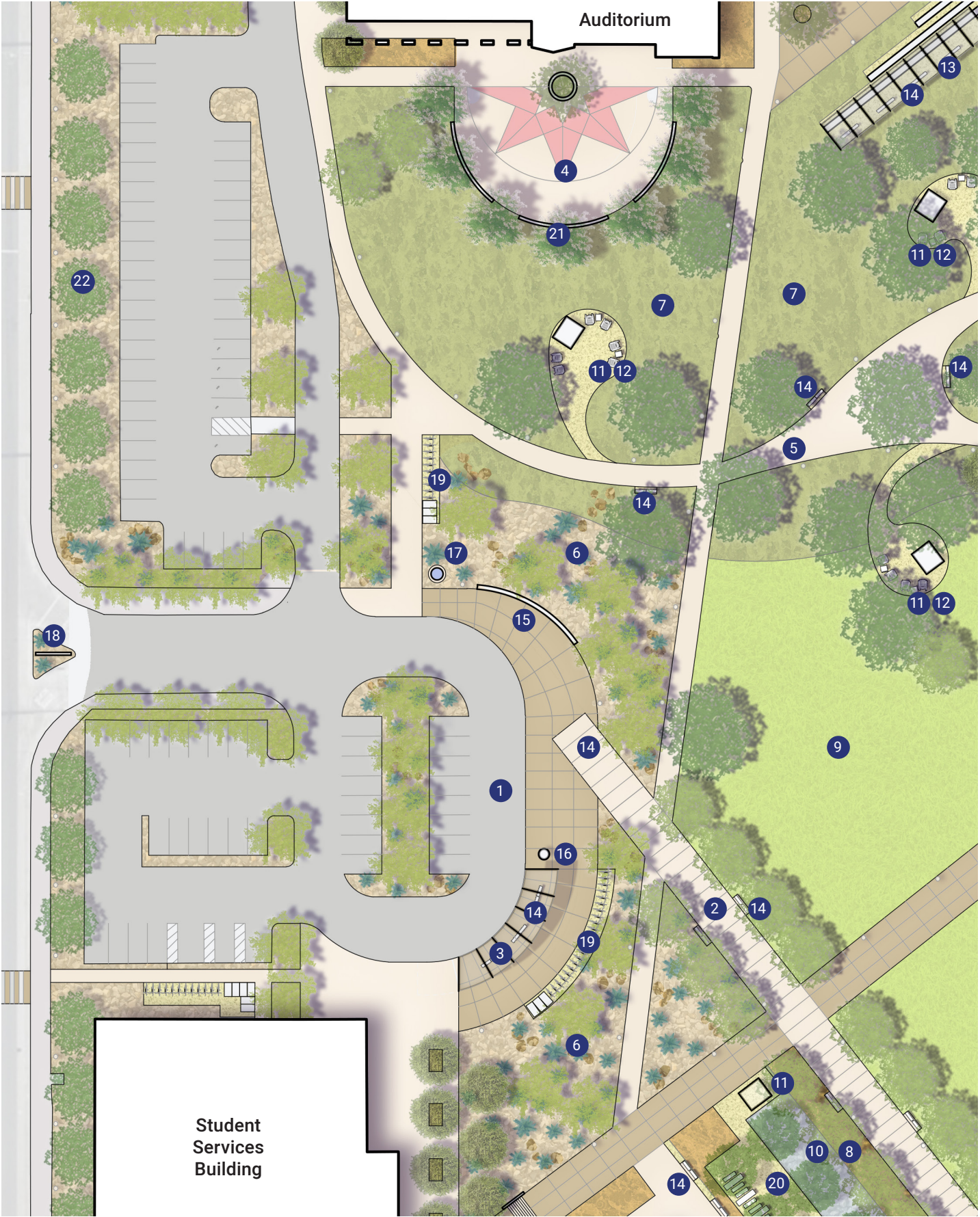
- 1 Main Entry and Arrival Plaza/ Streetscape
- 2 Central Event Plaza/ Event Lawn
- 3 Outdoor Classrooms/ Stormwater Treatment Garden

Focus View Area

The three focus plan areas within the Landscape Master Plan have been selected as they collectively include key physical framework elements described in the previous section. The following pages illustrate in more detail the vision for the campus including new and expanded seating and program areas that are conveniently located, shaded and inviting; clarified and strengthened planting and circulation frameworks that define and clarify a distinct and cohesive sense of place, reinforce intuitive wayfinding and as equally important, introduce sustainable strategies that mitigate heat-island effect, reduce maintenance and water use, and celebrate local materials.



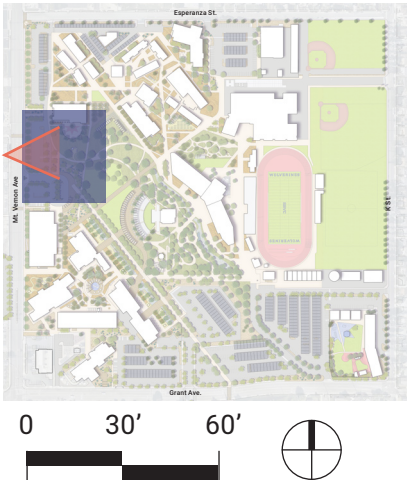
Main Entry and Arrival Plaza/ Streetscape



Features

- 1 Drop Off
- 2 Fault Line Promenade
- 3 Arrival Plaza and Shade Structure
- 4 Auditorium Event Area
- 5 Oak Trail
- 6 Mojave Desert Garden
- 7 Oak Savanna
- 8 Waterwise Planting
- 9 Event Lawn
- 10 Stormwater Garden
- 11 Solar Powered Collaboration Table
- 12 Informal Seating Area
- 13 Shaded Amphitheater
- 14 Bench Seating
- 15 Seatwall
- 16 Directory Kiosk
- 17 Relocated SBVC Monument
- 18 Monument Sign
- 19 E-Bike Charging & Bike Corral
- 20 Collaboration Space
- 21 Relocated Memorial Area
- 22 Desert Foothill Planting

Key Map



Arrival Plaza

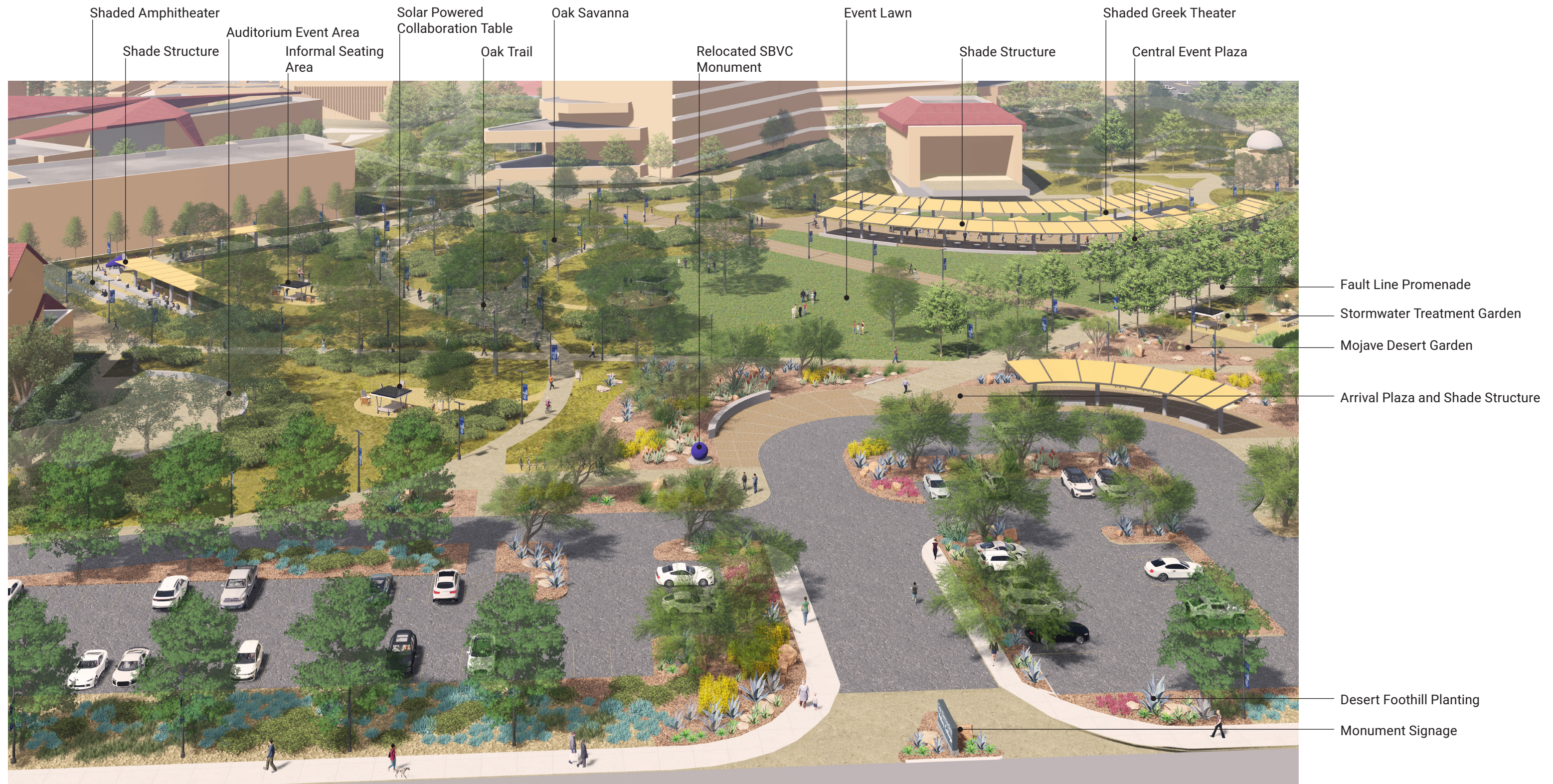


Desert Garden



Bike Parking





Views to east of Main Entry and Arrival Plaza

Located mid-block off Mt. Vernon Avenue and framed by the historic Auditorium and new Student Services Building, the North Arrival Plaza has expansive views of the heart of SBVC campus activities as well as distant views to the San Gabriel Mountains beyond. New native and drought tolerant planting along the streetscape leads visitors to a welcoming arrival plaza with shaded seating, signage, bike storage facilities surrounded by a dazzling display of specimen succulents and canopy trees that are native to the San Bernardino Valley and Mojave Desert. A campus crossroads, the extended Oak Garden trail and Fault Line Promenade direct students to academic courtyards and campus facilities to the east and south. The expanded Auditorium event plaza, shaded by a ring of canopy trees, and new event esplanade and iconic shade structure, adjacent to the Greek Amphitheater frame seating and gathering spaces set in the Oak Savannah and activities in the multi-purpose event lawn.

Main Entry and Arrival Plaza/ Streetscape Comparison

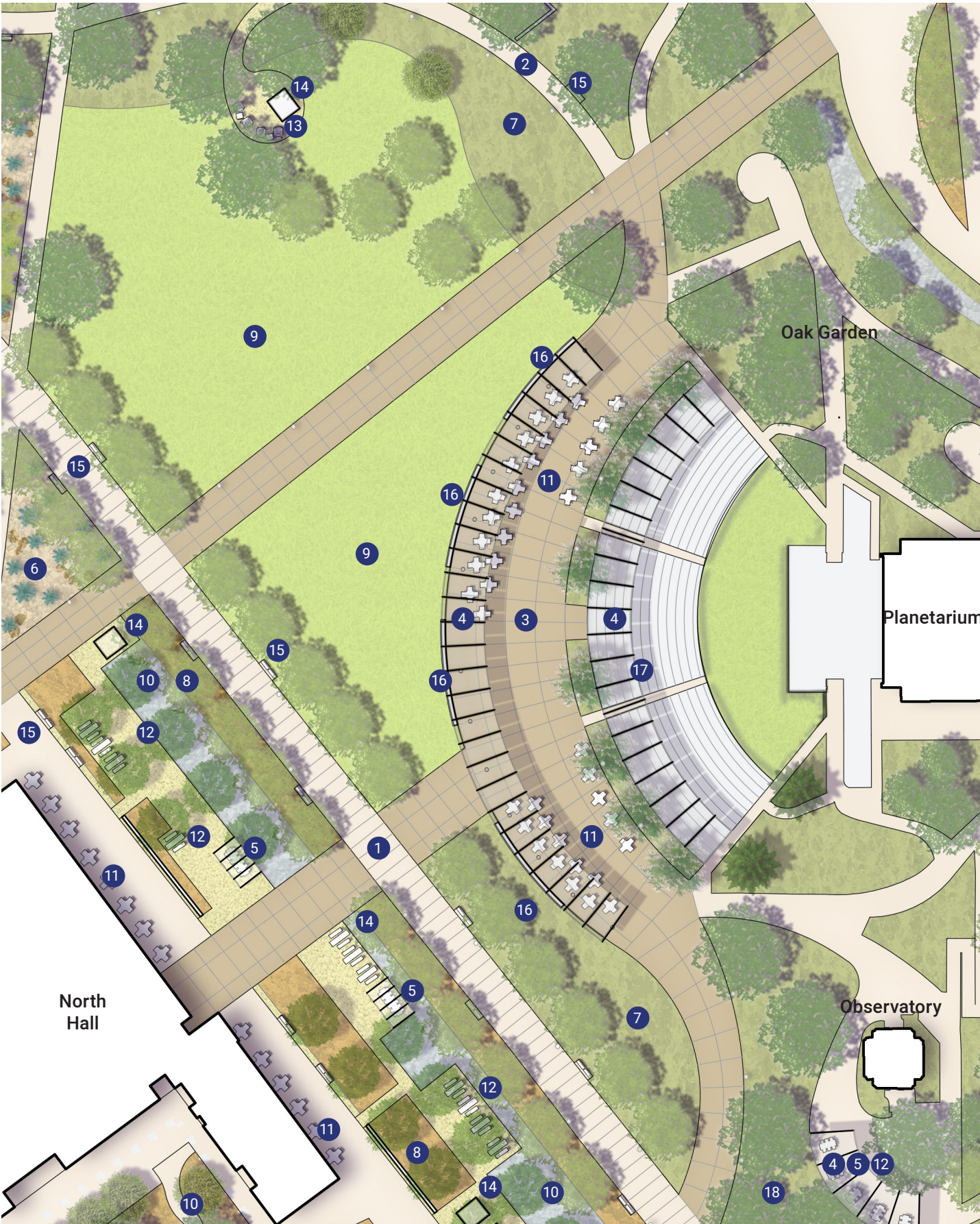


Existing



Proposed

Central Event Plaza / Event Lawn



Features

- 1 Fault Line Promenade
- 2 Oak Trail
- 3 Central Event Plaza
- 4 Shade Structure
- 5 Outdoor Classroom
- 6 Mojave Desert Garden
- 7 Oak Savanna
- 8 Waterwise Planting
- 9 Event Lawn
- 10 Stormwater Garden
- 11 Cafe Seating
- 12 Collaboration Space
- 13 Informal Seating
- 14 Solar Powered Collaboration Table
- 15 Bench Seating
- 16 Seatwall
- 17 Shaded Greek Theater
- 18 Geology Garden



Custom Shade Structure

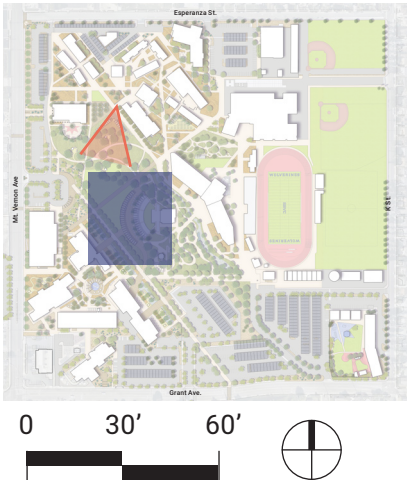


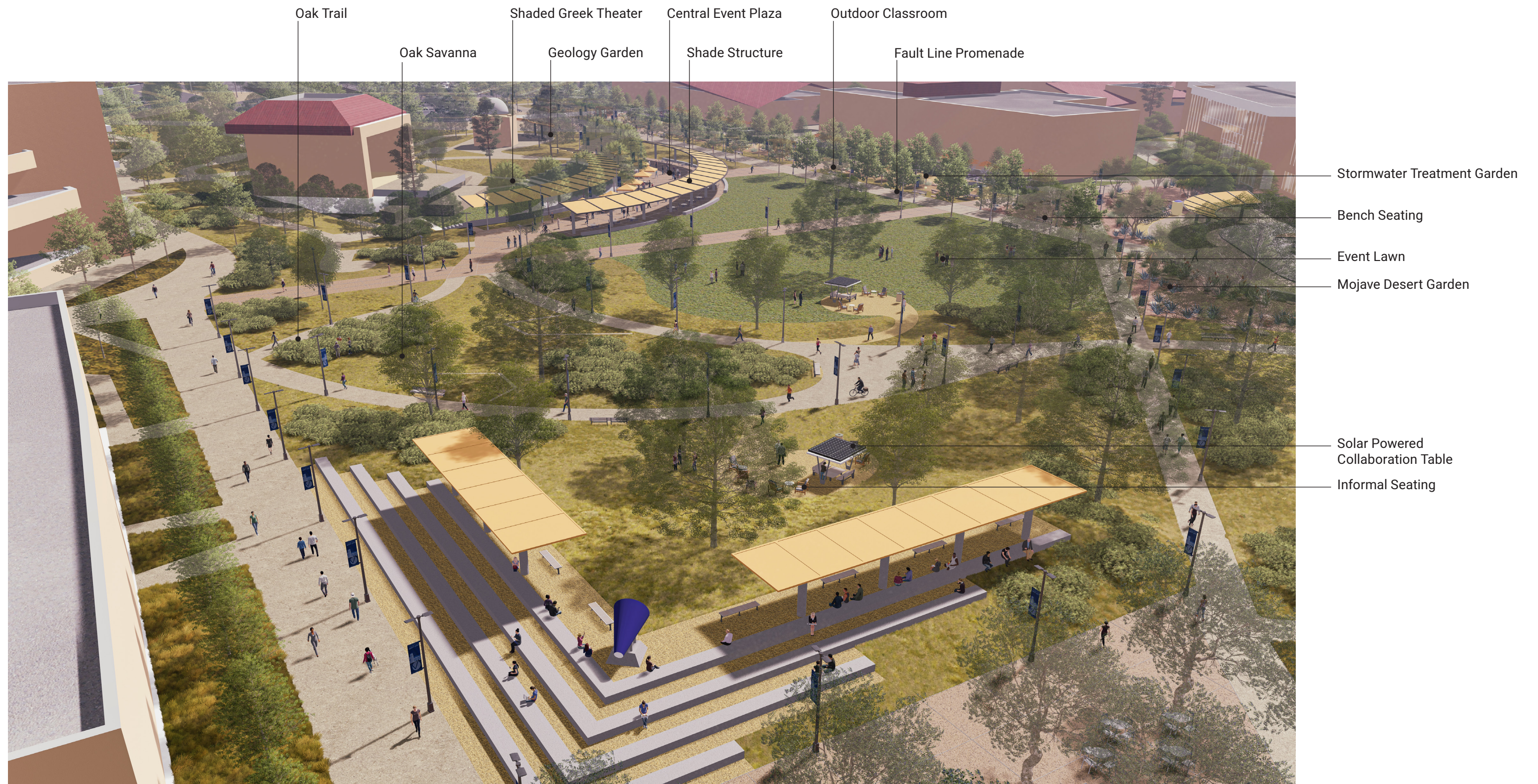
Informal Plaza Seating



Event Lawn

Key Map





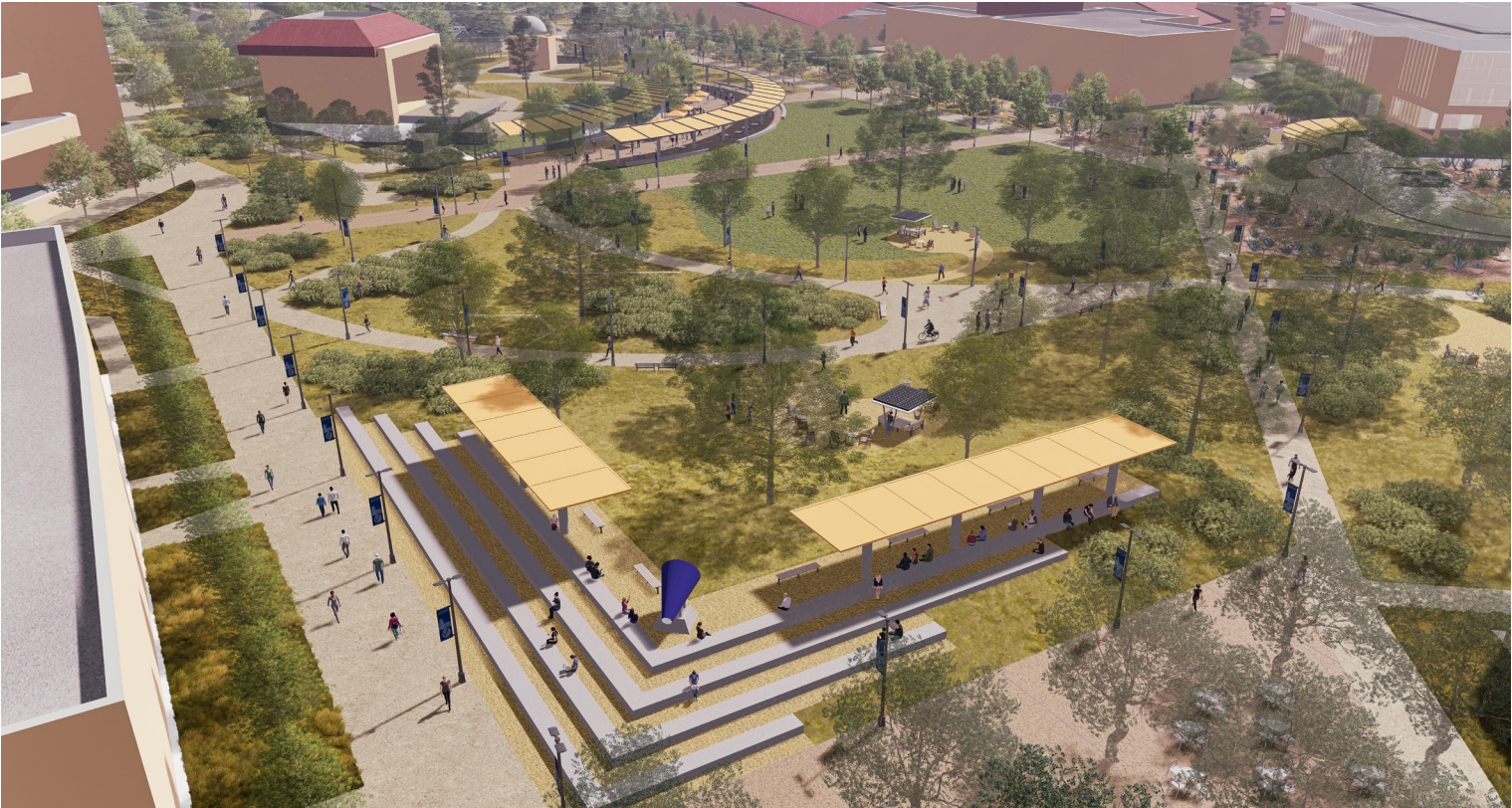
View to southwest of Central Event Plaza and Event Lawn

The core of the campus, the sequence of gathering and event spaces shown in this view accommodate the full range of campus activities. The existing Arts Plaza and seating stairs are more inviting with a new shade structure. New pedestrian paths and seating and gathering spaces wind through existing Oak and Sycamore creating shady spots to relax, collaborate and people watch. The “right-sized” event lawn is large enough to accommodate occasional tented activities as well as informal recreational activities. The Greek Amphitheater beyond features a new shade structure to provide comfortable seating opportunities for events or outdoor classes.

Central Event Plaza / Event Lawn Comparison

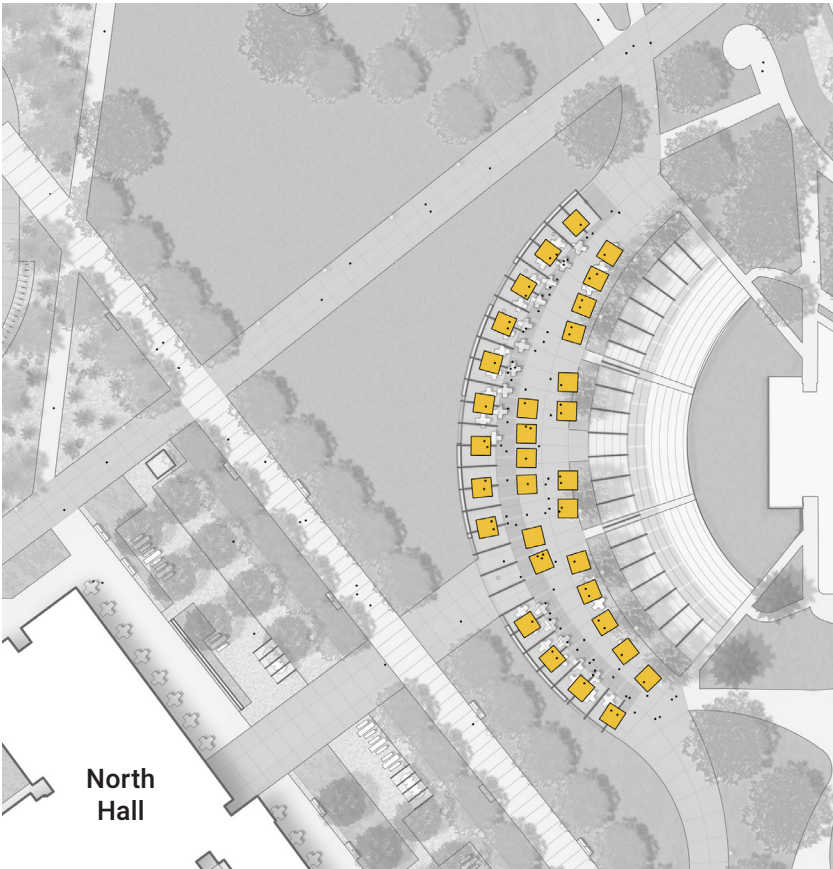


Existing



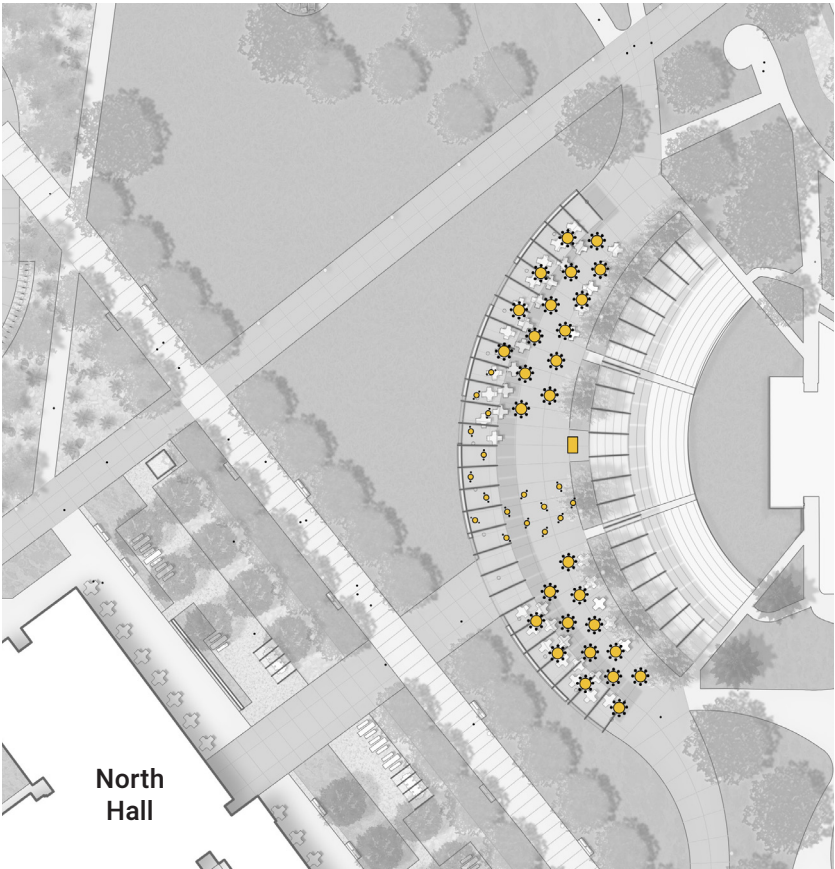
Proposed

Central Event Plaza / Event Lawn - Sample Layout Scenarios



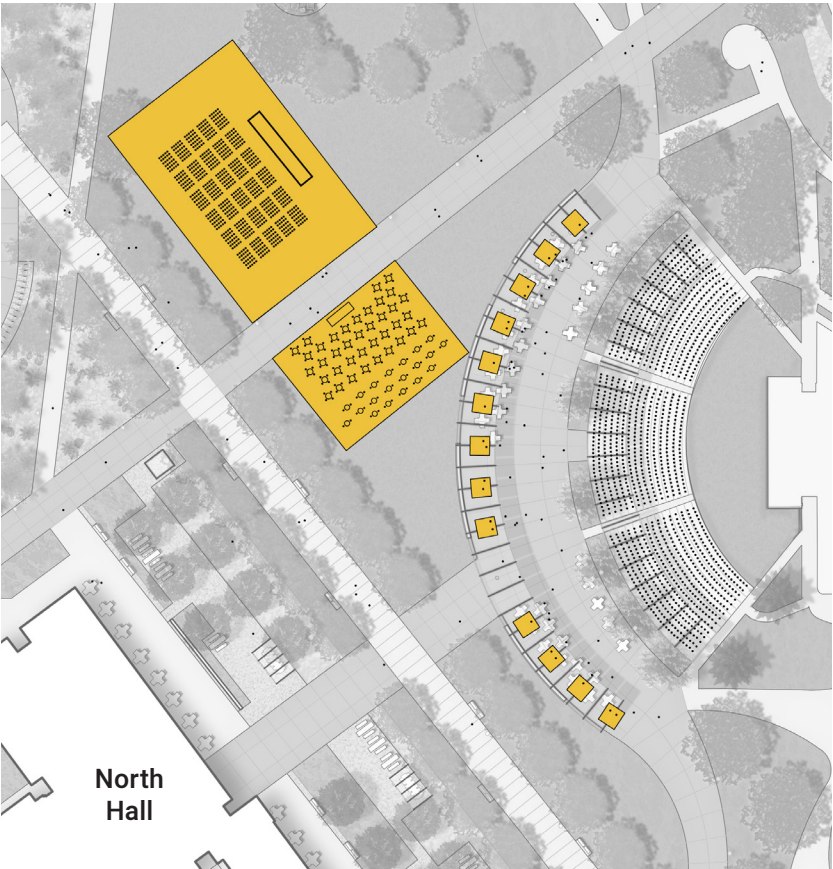
Scenario 1: Campus or Community Fair

- 16,268sf plaza
- 5,720sf plaza shade structure
- (32+) 10'x10' booths



Scenario 2: 250 Person Catered Event

- (25+) 10 person tables
- (17+) cocktail tables
- 200sf stage, podium or speaker space
- 250 seated guests



Scenario 3: Large Events

- 7200sf/500 person tent
- 4000sf/200 person tent
- 4,700sf amphitheater shade structure
- 1000 person amphitheater seating
- (20) 10'x10' booths



Career Fair

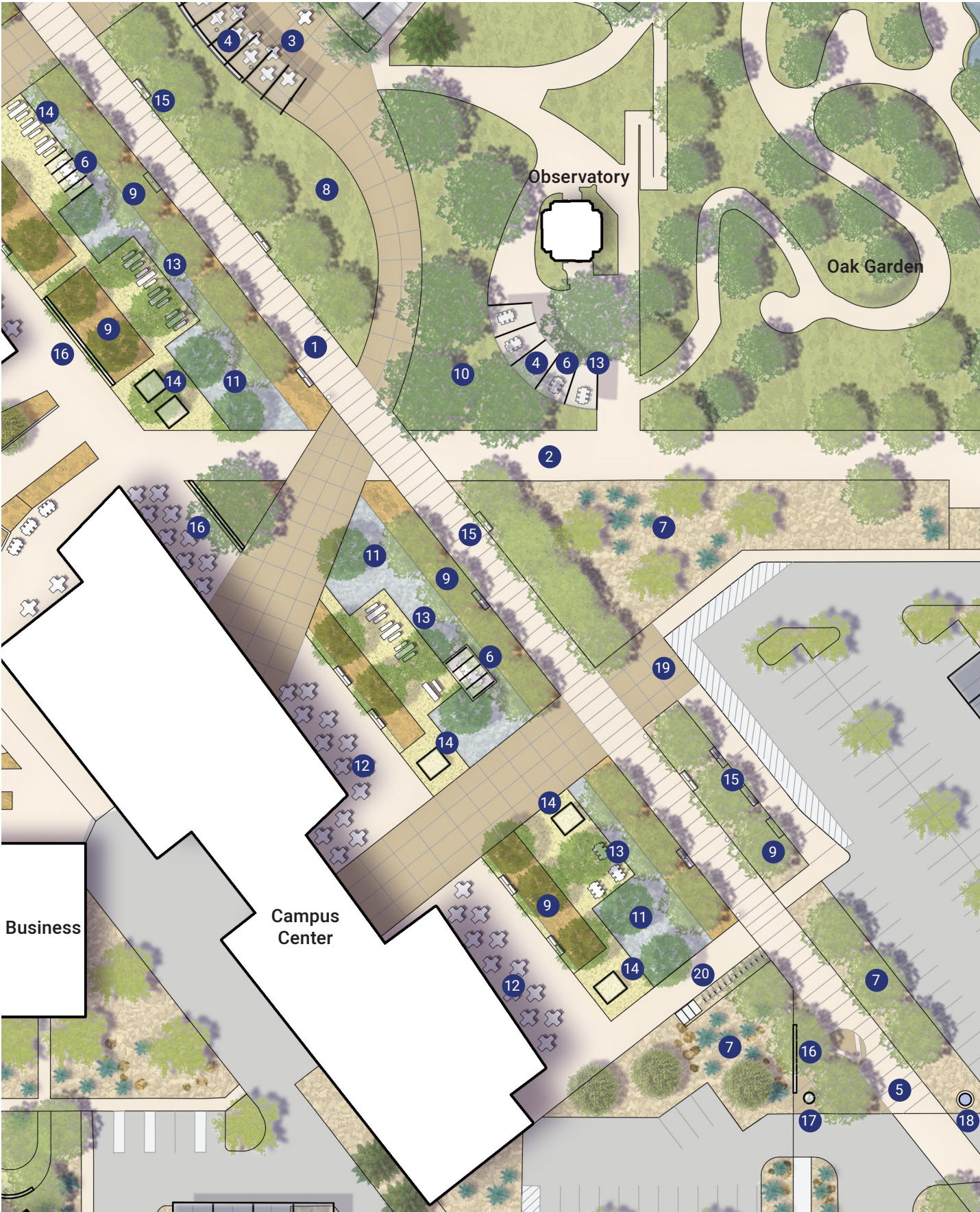


Awards Ceremony

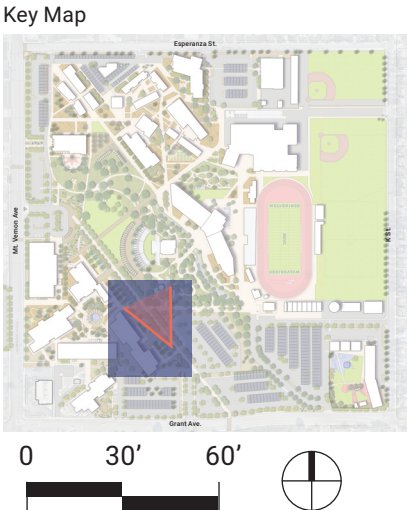


Tented Event

Outdoor Classrooms / Stormwater Treatment Garden



- Features**
- 1 Fault Line Promenade
 - 2 Richardson Walk
 - 3 Central Event Plaza
 - 4 Shade Structure
 - 5 Arrival Plaza
 - 6 Outdoor Classroom
 - 7 Desert Planting
 - 8 Oak Savanna
 - 9 Waterwise Planting
 - 10 Geology Garden
 - 11 Stormwater Garden
 - 12 Outdoor Cafe
 - 13 Collaboration Space
 - 14 Solar Powered Collaboration Table
 - 15 Bench Seating
 - 16 Seatwall
 - 17 Directory Kiosk
 - 18 SBVC Monument
 - 19 Drop-off
 - 20 E-Bike Charging & Bike Corral



Outdoor Classroom



Shaded Study Area



Outdoor Cafe Seating





*Some trees were omitted to visualize the proposed improvements.

View to north of Outdoor Classrooms and Stormwater Treatment Garden

The importance of Fault Line Promenade as a circulation connector and formal campus organizing element—indicating the presence and orientation of the fault lines running through the campus—is further amplified by locating major community gathering spaces parallel and adjacent to the Campus Center and North Hall. A series of open air outdoor classrooms include amenities to support learning including power for laptops and other audio-visual tools, collaboration tables and integrated white boards. Other flexible seating includes a combination of fixed elements like benches and tables as well as some movable furnishings that can be secured at the end of the day. A linear stormwater treatment garden is located between Promenade and seating areas, achieving sustainability goals and providing opportunity for interpretation and learning.

Outdoor Classrooms / Stormwater Treatment Garden Comparison



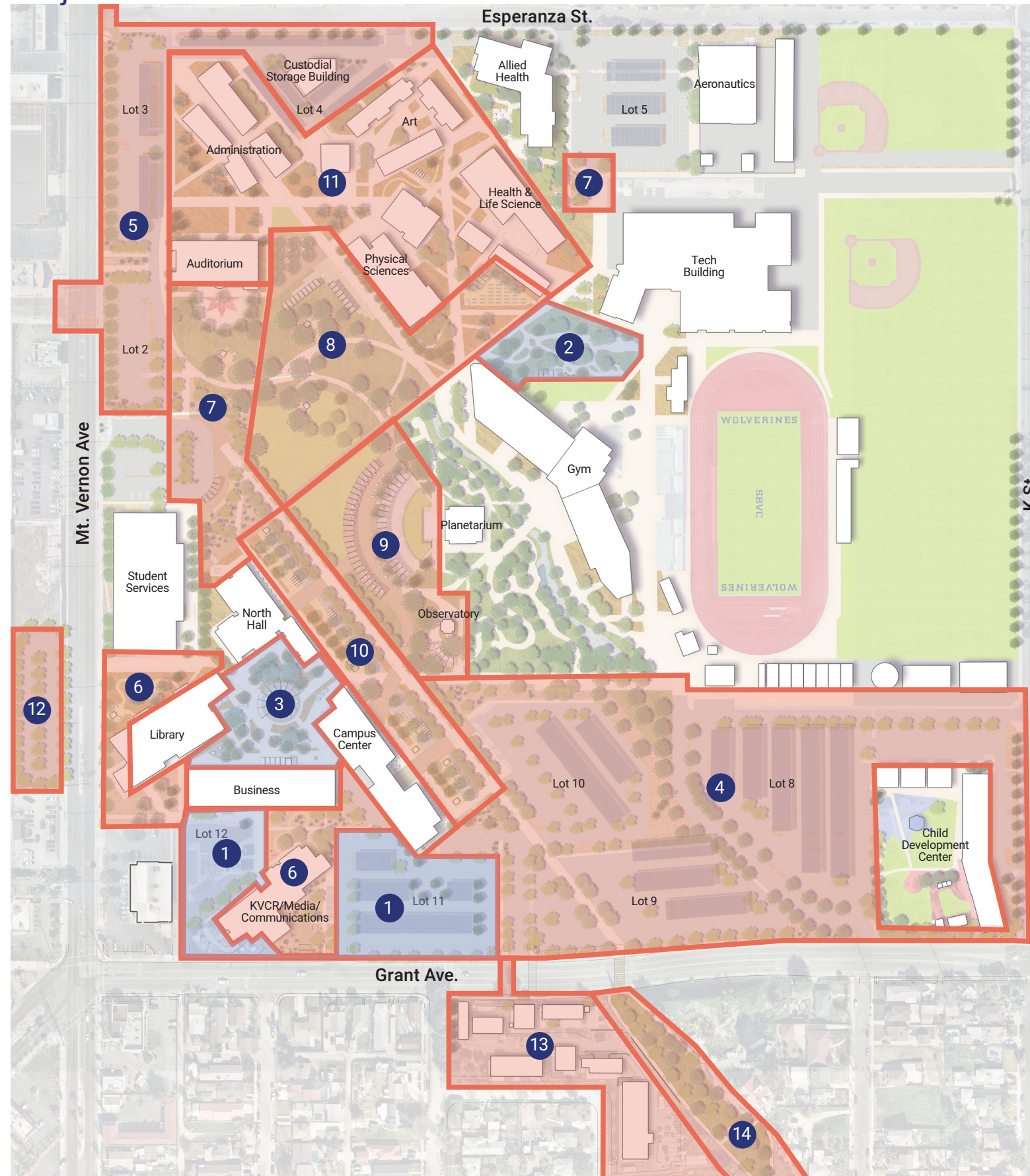
Existing



Proposed

*Some trees were omitted to visualize the proposed improvements.

Project Areas



1 Lot 11 and 12 (Phase 1)

Located adjacent to high use and high-profile entries and buildings, these parking lots are enhanced with native planting for screening and shading. Lot 12 will also receive solar panel shade structures as part of SBVC's sustainability initiative.

2 Bio Garden (Phase 1)

Building on the success of the existing Bio Garden, expanded spaces include more interpretive gardens and an open air pavilion equipped for use as an outdoor lab and classroom.

3 Business Quad (Phase 1)

Designed and in the process of implementation, the reimagined Business Quad includes additional shade and seating areas and locally adapted xeric planting, creating an inviting space for relaxation, dining and collaboration.

4 South and East Frontage and Parking

Define a continuous sense of campus identity on SBVC's east side and south parking lot by implementing a cohesive strategy to address ground plane planting areas. Define a strong sense of arrival at SBVC's southern end and mitigate heat island effect by shading existing parking and sidewalks with new canopy trees. Provide expanded paving at bus and vehicular drop off and arrival zones with wayfinding signage, bicycle parking facilities, shaded seating and information kiosks.

5 Northwest Street Frontages

Define a unified frontage that projects a strong message about SBVC's commitment to sustainable practices and the campus' unique identity. Adopt a xeric approach to understory planting while preserving and supplementing existing mature trees. Celebrate regional identity by using locally sourced cobble mulch and native plant materials.

6 West Street Frontage

Create a window into campus activities that reflects SBVC's identity and values. Create new accessible walkway from Mount Vernon Avenue to southwest corner of the campus. Define arrival points with demonstration gardens featuring groves of locally adapted low-water trees and understory plants; develop garden trails and informal seating areas.

7 Arrival Plaza/Auditorium Event Area

Create a welcoming sense of arrival that reinforces SBVC's unique identity, welcomes and orients visitors, celebrates historic structures and spaces, showcases events and activities and frames views to the campus interior spaces and circulation.

8 North Open Space/Community Garden

Rethink the campus' iconic central greensward to make a shaded, inviting collection of informal gathering spaces. Celebrate the regional context by framing iconic views through the campus to the mountains beyond as well as using native trees and understory. Create a strong pedestrian link to the east side of the campus.

9 Central Event Plaza

Expand the plaza space adjacent to the exciting Greek Amphitheater to create a high-capacity flexible use space for a variety of campus events and celebrations. Iconic shade structure and large canopy trees frame views and provide cooling shade to plaza and amphitheater seating. Conveniently located next to the mow-able meadow, the space can accommodate a range of equipment configurations from large tents, to stages, tables and portable canopies.

10 Fault Line Promenade

Reinforce the geometry of the existing Fault Line Promenade by creating a series of outdoor amenity spaces that align with and engage this major circulation spine. Further activate the east side of the existing dining and classroom buildings with outdoor classrooms and informal seating areas set among tree allees. Create a dense and lively community gathering space that supports the wide range of campus community activities from academic collaboration, to outdoor dining and informal gatherings.

11 Academic Courtyard Refresh

Refresh existing drought tolerant planting at academic courtyards to provide new teaching and interpretive garden opportunities, simplify maintenance and create additional seating areas. Create new Entry mini-plaza at Lot 5.

12 West Parking Area

Provide shade to mitigate heat island effect per Cal Green requirements. Provide accessible stalls and curb cuts as required. Provide safe and accessible pedestrian walkways to connect to existing signalized cross-walks.

13 Maintenance Yard

Provide shade to mitigate heat island effect per Cal Green requirements. Provide accessible stalls and curb cuts as required. Provide safe and accessible pedestrian walkways to connect to existing signalized cross-walks.

14 Greenbelt Connection to Student Housing

Multi-modal trail to future student housing development.

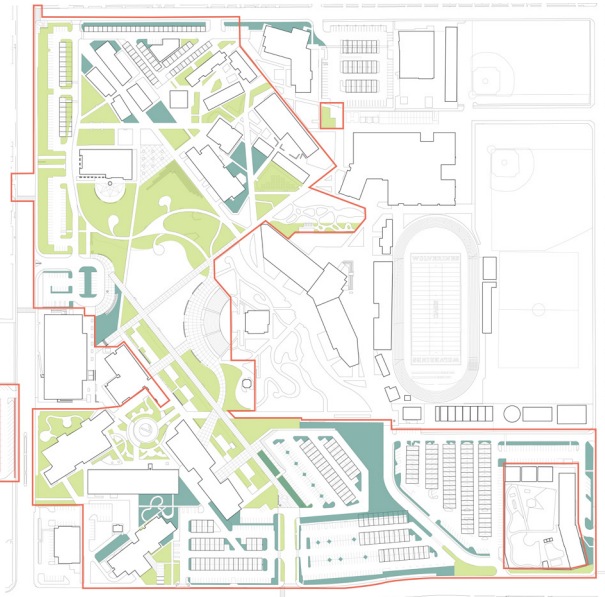
Planting Framework



Graphic Legend

- Native Planting
- Desert Landscape
- Waterwise Planting
- Low Water Turf
- Stormwater Planting
- Oak
- Canopy Tree
- Accent Tree
- Sycamore

The diagrams below show areas of existing planting to be refreshed, areas of turf to be replaced with planting, proposed new trees and existing trees to remain in place.



Converted Planting Legend

- Turf Converted to Planting- 275,709 sf
- Refreshed Planting



Tree Legend

- 205 New Trees
- 623 Existing Trees



Native Planting

Native planting extends from the existing Oak Garden across the proposed Oak Savannah, wrapping the campus core. The use of native plant palettes here helps emphasize SBVC’s unique sense of place, celebrates the beauty, fragrance, history and ethnobotanical value of indigenous plant materials while also reaping the benefits of their inherent drought tolerance, pest and disease resistance.



Total Area of Native Planting:
104,654 sf / 2.4 ac

Trees, such as:

- Ceanothus ‘Ray Hartman’
- Cercis occidentalis, Western Redbud
- Heterolmeles arbutifolia, Toyon
- Platanus racemosa, Western Sycamore
- Quercus spp.
- Rhus laurina, Laurel Sumac
- Populus fremontii, Western Cottonwood
- Salix spp., Arroyo Willow
- Alnus rhombifolia, White Alder

Shrubs, such as:

- Arctostaphylos cercocarpus, Mountain Mahogany
- Artemesia californica, California Sagebrush
- Baccharis pilularis, Coyote Brush
- Carpenteria californica, Bush Anemone
- Ceanothus griseus var. horizontalis, Wild Lilac
- Encelia californica, California Brittlebrush
- Eriogonum fasciculatum, California Buckwheat
- Fremontodendron californicum, California Flannelbush
- Myrica californica, Pacific Wax Myrtle
- Prunus ilicifolia
- Rhamnus crocea, Spiny Redberry
- Rhus integrifolia, Lemonadeberry
- Ribes speciosum, Currant

Grasses and Perennials, such as:

- Achillea millefolium, Common Yarrow
- Achillea x ‘Moonshine’, Moonshine Yarrow
- Asclepias eriocarpa, Monarch Milkweed
- Corethrogyne filaginifolia, California Aster
- Dendromecon rigida, Island Bush Poppy
- Eriophyllum confertiflorum, Golden Yarrow
- Festuca californica, California Fescue
- Galvezia speciosa ‘Firecracker’, Snapdragon
- Leymus ‘Canyon Prince,’ Canyon Prince Wild Rye
- Mimulus aurantiacus, Bush Monkey Flower
- Muhlenbergia rigens, Deer Grass
- Penstemon spectabilis, Showy Penstemon
- Salvia apiana, White Sage
- Salvia mellifera, Black Sage
- Salvia clevelandii, Cleveland Sage



Native Grasses and Decorative Rock



Demonstration Habitat Garden



Native Meadow

Trees such as:



Ceanothus 'Ray Hartman'



Cercis occidentalis



Heterolmeles arbutifolia



Platanus racemosa

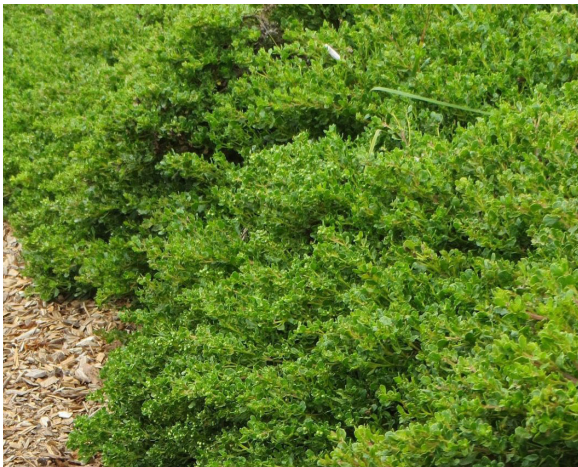


Quercus agrifolia

Shrubs such as:



Artemesia californica



Baccharis pilularis 'Pigeon Point'



Ceanothus griseus var. horizontalis



Myrica callifornica



Dendromecon rigida

Perennials and Grasses such as:



Eriogonum fasciculatum



Mimulus aurantiacus



Galvezia speciosa 'Firecracker'



Salvia clevelandii



Epilobium canum

Collaboration Table Low-High Recommendations



Collaborative Table - Concrete
Low



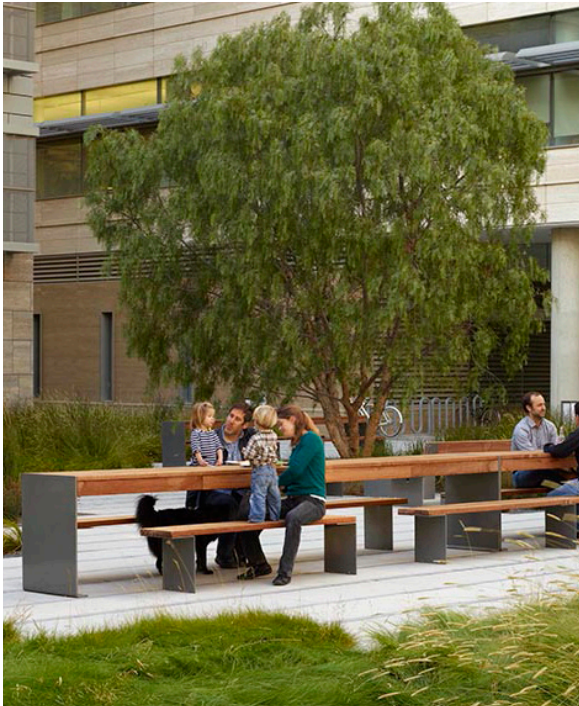
Concrete Table
Medium



Collaborative Table - Wood and Steel
Medium



Collaborative Table - Recycled Plastic
Medium



Collaborative Table - Wood and Steel
High

Technology Low-High Recommendations



Charging Station
Low



Solar Powered Bench with WiFi
Medium



Solar Powered Bench with Charging Station
High



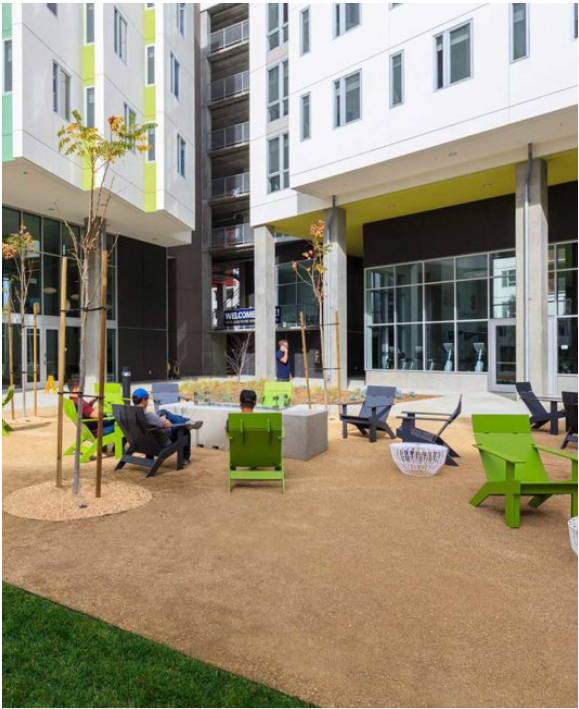
Solar Powered Bench with Charging Station
High



Solar Powered Tables with Charging Station
High



Fun Seating Low-High Recommendations



Recycled Plastic Adirondack Armchairs
Low



Plastic Chaise Lounge
Low



Hammock Loungers
Low



Hanging Basket Chairs
Low



Fixed Chaise Lounge
Medium



Recycled Plastic and Steel Lounger
Medium



Wobble Seats
Medium



Organic Shaped Concrete Seats
Medium



Wood and Steel Swing
High



Seating Nook Canopy
High

