



2022 Fact Book Student Outcomes

Prepared by the SBCCD Office of Research,
Planning and Institutional Effectiveness

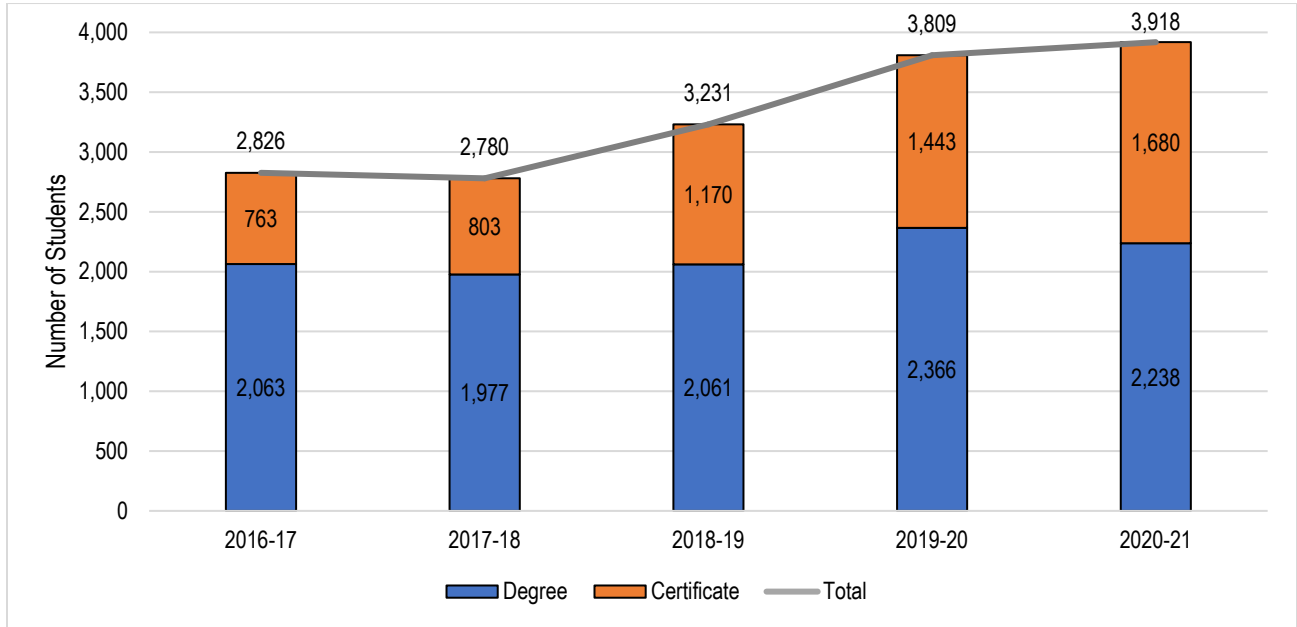
Table of Contents

Awards and Certificates: SBCCD	3
Awards and Certificates: Crafton Hills College	4
Awards and Certificates: San Bernardino Valley College	5
Awards and Certificates By Program, 2020-21: SBCCD	6
Awards and Certificates By Program, 2020-21: Crafton Hills College	7
Awards and Certificates By Program, 2020-21: San Bernardino Valley College	8
Annual Transfer Volume, 2016-2017 through 2020-2021	9
Transfer Volume (CSU, UC, In-State, and Out-of-State): SBCCD	10
Transfer Volume (CSU, UC, In-State, and Out-of-State): Crafton Hills College.....	11
Transfer Volume (CSU, UC, In-State, and Out-of-State): San Bernardino Valley College.....	12
Top Ten Transfers to a Four-Year University: 2020-21	13
Course Success Rates	14
Course Success Rates by Gender: SBCCD	15
Course Success Rates by Gender: Crafton Hills College	16
Course Success Rates by Gender: San Bernardino Valley College	17
Course Success Rates by Race/Ethnicity: SBCCD	18
Course Success Rates by Race/Ethnicity: Crafton Hills College	19
Course Success Rates by Race/Ethnicity: San Bernardino Valley College	20
Course Success Rates by Age: SBCCD.....	21
Course Success Rates by Age: Crafton Hills College.....	22
Course Success Rates by Age: San Bernardino Valley College.....	23
Course Success Rates by Special Population: SBCCD	24
Course Success Rates by Special Population: Crafton Hills College	25
Course Success Rates by Special Population: San Bernardino Valley College	26
Course Retention Rates	27
Course Retention Rates by Gender: SBCCD	28
Course Retention Rates by Gender: Crafton Hills College	29
Course Retention Rates by Gender: San Bernardino Valley College	30
Course Retention Rates by Race/Ethnicity: SBCCD	31
Course Retention Rates by Race/Ethnicity: Crafton Hills College	32
Course Retention Rates by Race/Ethnicity: San Bernardino Valley College	33
Course Retention Rates by Age: SBCCD.....	34
Course Retention Rates by Age: Crafton Hills College.....	35

2022 Fact Book – Student Outcomes

Course Retention Rates by Age: San Bernardino Valley College..... 36
Course Retention Rates by Special Population: SBCCD..... 37
Course Retention Rates by Special Population: Crafton Hills College..... 38
Course Retention Rates by Special Population: San Bernardino Valley College..... 39
Persistence Rate: Retained from Fall to Spring..... 40
Licensure and Certification Pass Rates 41

Awards and Certificates: SBCCD

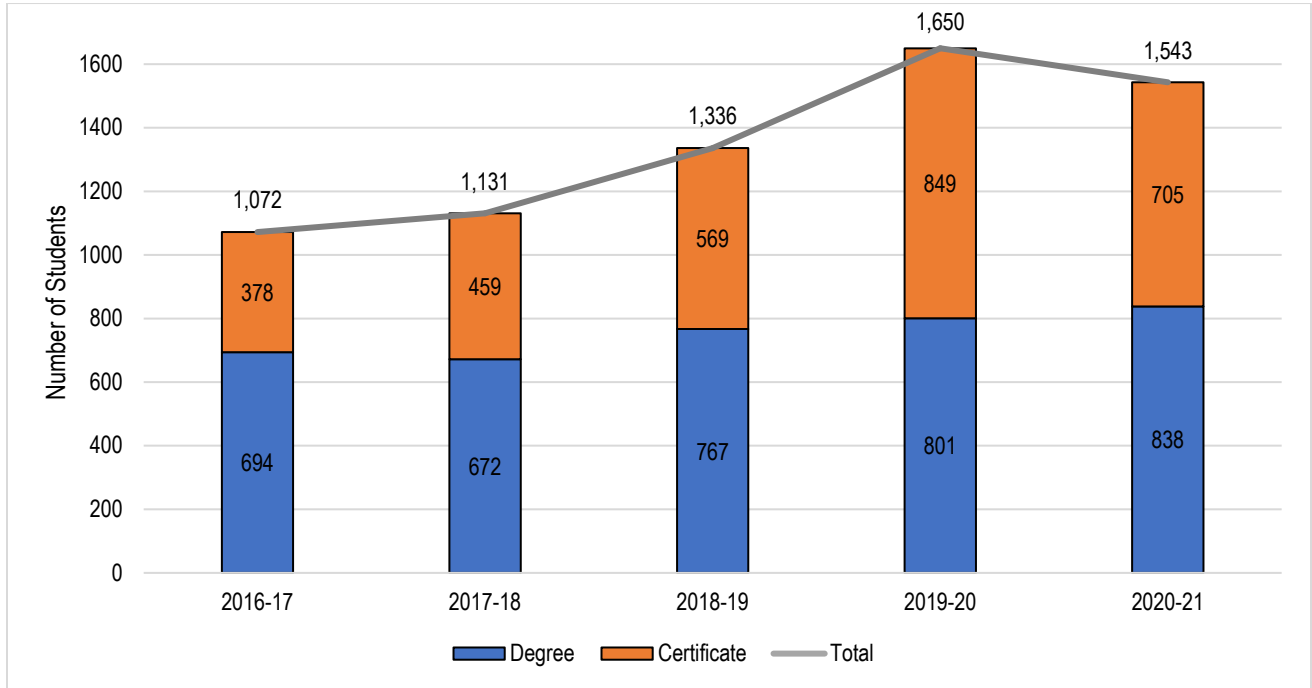


Total Headcount	2016-17	2017-18	2018-19	2019-20	2020-21	5 Year Change	5 Year Average
Degree	2,063	1,977	2,061	2,366	2,238	+8%	2,141
AA-T/AS-T	527	611	654	804	839	+59%	687
AA/AS Degree	1,536	1,366	1,407	1,562	1,399	-9%	1,454
Certificate	763	803	1,170	1,443	1,680	+120%	1,172
Certificate 60 or more units	19	11	14	12	4	-79%	12
Certificate 30 to 59 units	431	458	767	944	817	+90%	683
Certificate 29 or fewer units	313	334	388	487	859	+174%	476
Noncredit Award			1				
Total	2,826	2,780	3,231	3,809	3,918	+39%	3,313

Source: CCCC Data Mart: https://datamart.cccc.edu/Outcomes/Program_Awards.aspx

On average, between 2016-17 and 2020-21, 64.6% of total awards conferred were associate degrees and 35.4% were certificates. The number of associate degrees conferred in the last five academic years has increased 8%, from 2,063 in 2016-17 to 2,238 in 2020-21, and the number of certificates conferred has increased 120%, from 763 in 2016-17 to 1,680 in 2020-21.

Awards and Certificates: Crafton Hills College

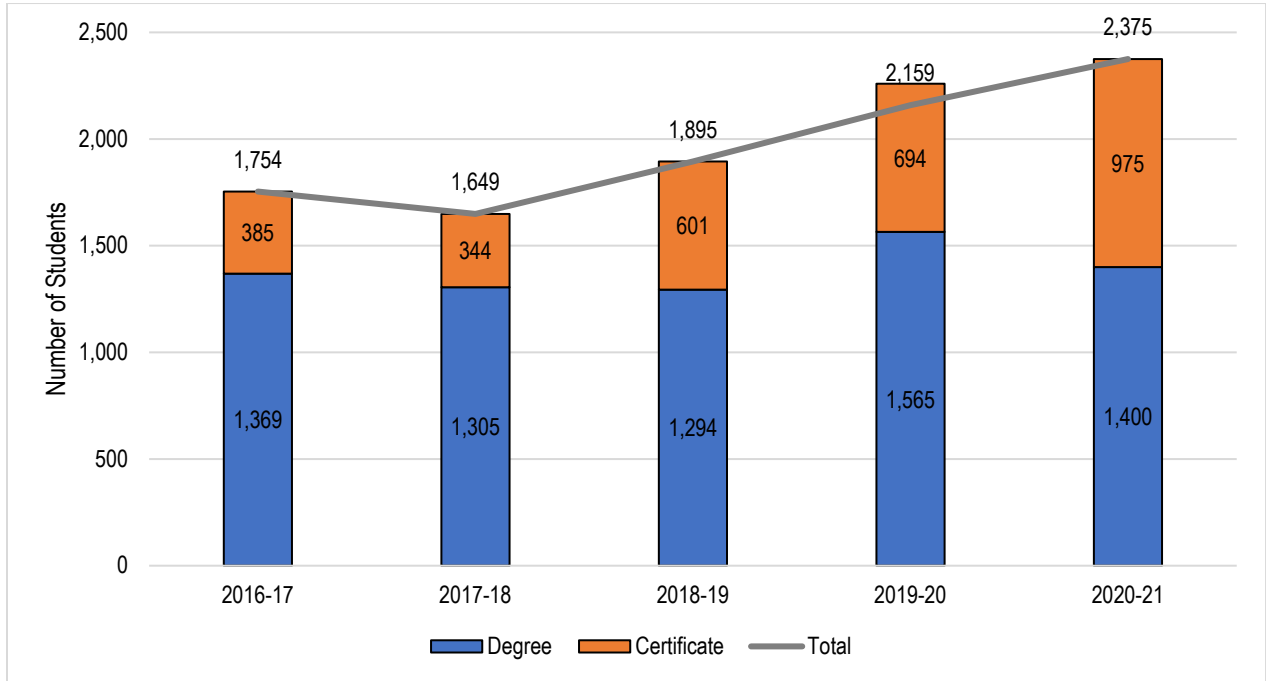


Total Headcount	2016-17	2017-18	2018-19	2019-20	2020-21	5 Year Change	5 Year Average
Degree	694	672	767	801	838	+21%	754
AA-T/AS-T	218	245	295	326	346	+59%	286
AA/AS Degree	476	427	472	475	492	+3%	468
Certificate	378	459	569	849	705	+87%	592
Certificate 60 or more units	8	8	8	7	0	-100%	6
Certificate 30 to 59 units	214	235	281	484	466	+118%	336
Certificate 29 or fewer units	156	216	280	358	239	+53%	250
Total	1,072	1,131	1,336	1,650	1,543	+44%	1,346

Source: CCCC Data Mart: https://datamart.cccco.edu/Outcomes/Program_Awards.aspx

On average, between 2016-17 and 2020-21, 56.0% of total awards conferred at Crafton Hills College were associate degrees and 44.0% were certificates. Over this period, the number of associate degrees conferred has increased 21%, from 694 in 2016-17 to 838 in 2020-21, and the number of certificates conferred has increased 87%, from 378 in 2016-17 to 705 in 2020-21.

Awards and Certificates: San Bernardino Valley College

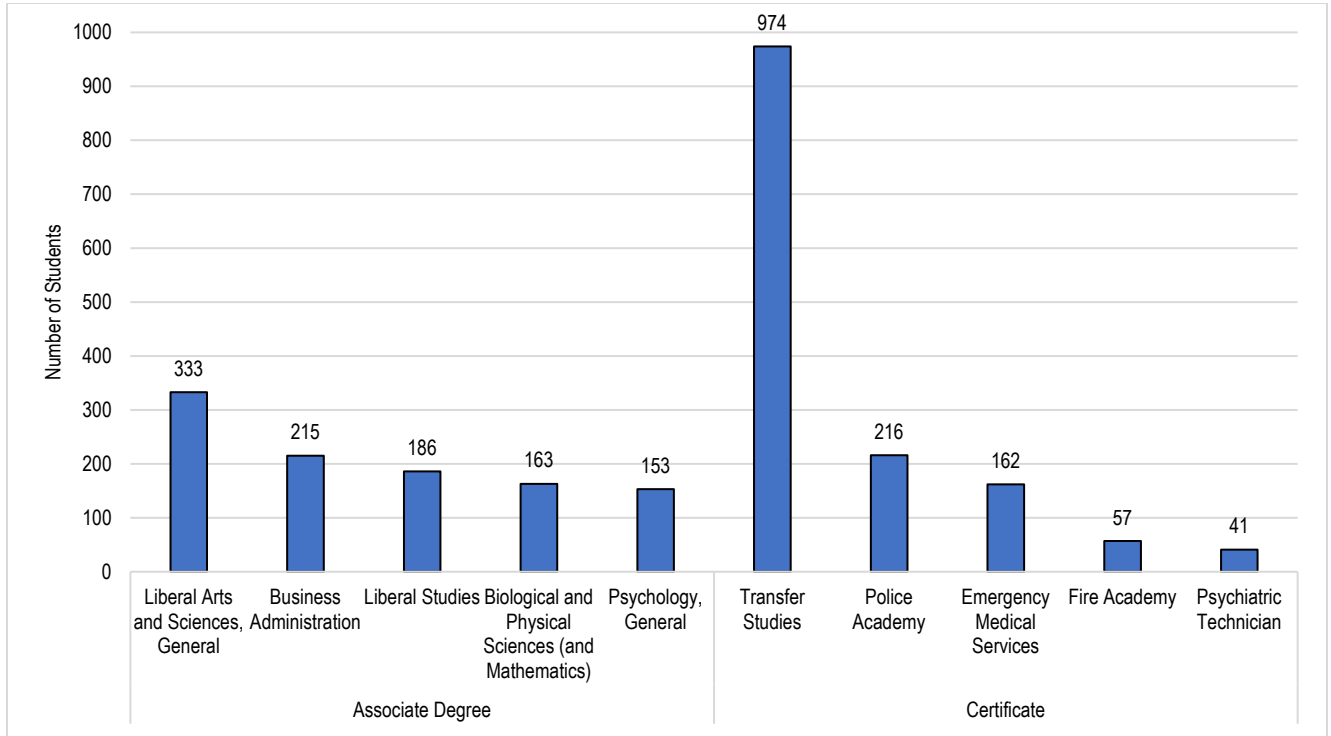


Total Headcount	2016-17	2017-18	2018-19	2019-20	2020-21	5 Year Change	5 Year Average
Degree	1,369	1,305	1,294	1,565	1,400	+2%	1,387
AA-T/AS-T	309	366	359	478	493	+60%	401
AA/AS Degree	1,060	939	935	1,087	907	-14%	986
Certificate	385	344	601	594	975	+153%	580
Certificate 60 or more units	11	3	6	5	4	-64%	6
Certificate 30 to 59 units	217	223	486	460	351	+62%	347
Certificate 29 or fewer units	157	118	108	129	620	+295%	227
Noncredit Award			1				
Total	1,754	1,649	1,895	2,159	2,375	35%	1,966

Source: CCCCO Data Mart: https://datamart.cccco.edu/Outcomes/Program_Awards.aspx

On average, between 2016-17 and 2020-21, 70.5% of total awards conferred at SBVC were associate degrees and 29.5% were certificates. Over this period, the number of associate degrees conferred has increased 2%, from 1,369 in 2016-17 to 1,400 in 2020-21, and the number of certificates conferred has increased 153.0%, from 385 in 2016-17 to 975 in 2020-21.

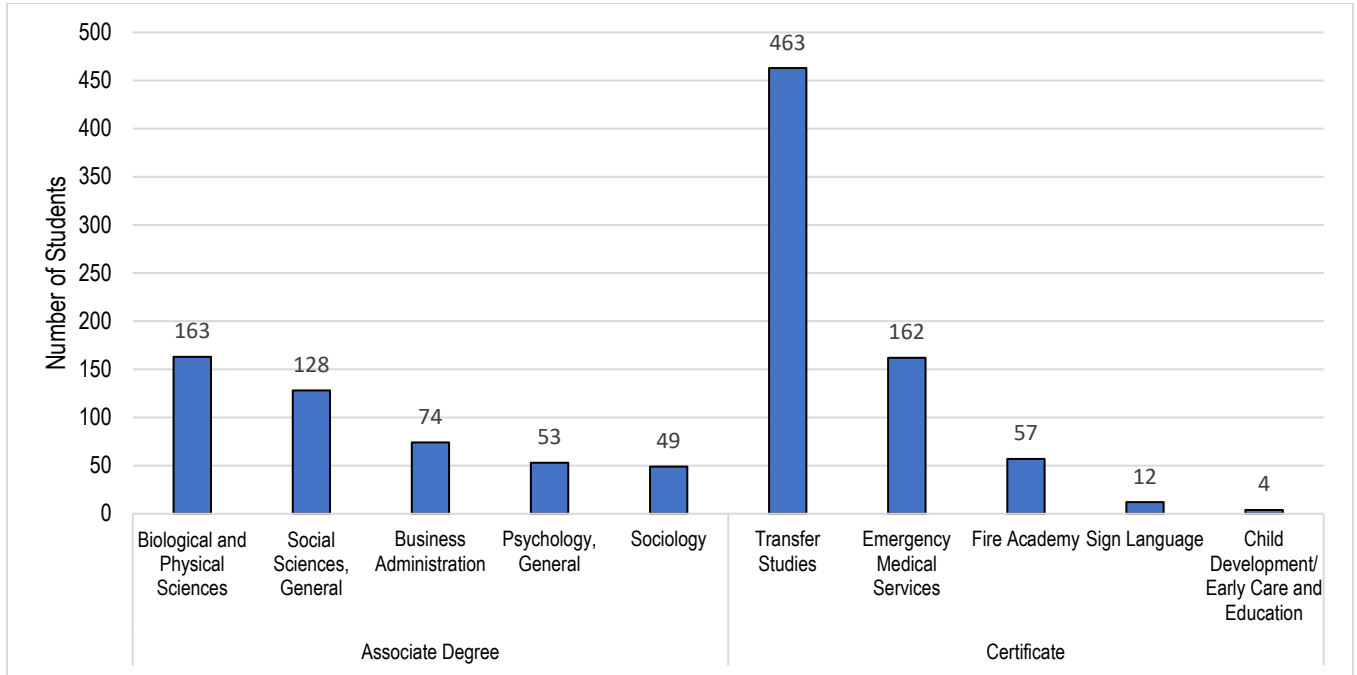
Awards and Certificates By Program, 2020-21: SBCCD



Rank	Associate Degree Top Program	Count (N=2,238)	Percent
1	Liberal Arts and Sciences, General	333	14.9%
2	Business Administration	215	9.6%
3	Liberal Studies	186	8.3%
4	Biological and Physical Sciences (and Mathematics)	163	7.3%
5	Psychology, General	153	6.8%
6	Social Sciences, General	128	5.7%
7	Sociology-220800	106	4.7%
8	Registered Nursing	99	4.4%
9	Administration of Justice	70	3.1%
10	Mathematics, General	53	2.4%
11	Human Services	43	1.9%
12	History	39	1.7%
13	Accounting	36	1.6%
14	English	35	1.6%
14	Speech Communication	35	1.6%

Rank	Certificate Top Program	Count (N=1,680)	Percent
1	Transfer Studies	974	58.0%
2	Police Academy	216	12.9%
3	Emergency Medical Services	162	9.6%
4	Fire Academy	57	3.4%
5	Psychiatric Technician	41	2.4%
6	Accounting	19	1.1%
6	Alcohol and Controlled Substances	19	1.1%
8	Automotive Collision Repair	17	1.0%
8	Preschool Age Children	17	1.0%
10	Health Information Coding	12	0.7%
10	Sign Language	12	0.7%
10	Water and Wastewater Technology	12	0.7%
13	Environmental Control Technology	11	0.7%
14	Electronics and Electric Technology	9	0.5%
14	Radio and Television	9	0.5%

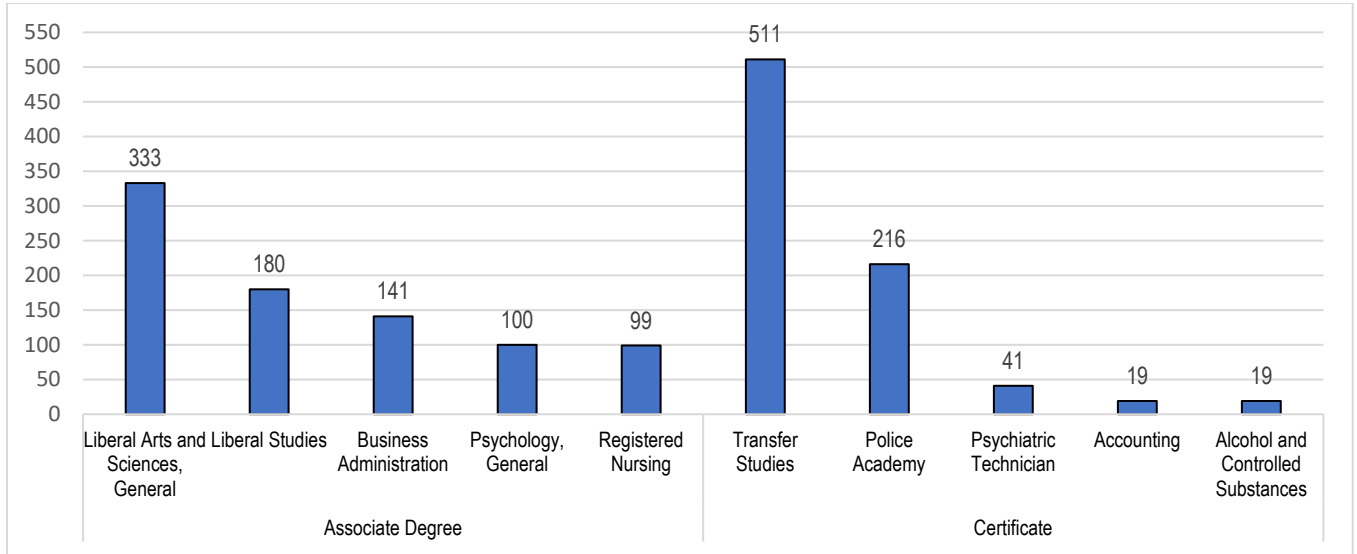
Awards and Certificates By Program, 2020-21: Crafton Hills College



Rank	Associate Degree Top Program	Count (N=838)	Percent
1	Biological and Physical Sciences (and Mathematics)	163	19.5%
2	Social Sciences, General	128	15.3%
3	Business Administration	74	8.8%
4	Psychology, General	53	6.3%
5	Sociology	49	5.8%
6	History	39	4.7%
7	Mathematics, General	30	3.6%
8	Respiratory Care/Therapy	28	3.3%
9	English	23	2.7%
10	Computer Science (Transfer)	18	2.1%
11	Fire Technology	17	2.0%
12	Art	15	1.8%
12	Speech Communication	15	1.8%
14	Kinesiology	14	1.7%
15	Sign Language	12	1.4%

Rank	Certificate Top Program	Count (N=705)	Percent
1	Transfer Studies	463	65.7%
2	Emergency Medical Services	162	23.0%
3	Fire Academy	57	8.1%
4	Sign Language	12	1.7%
5	Child Development/Early Care and Education	4	0.6%
6	Music	2	0.3%
6	Paramedic	2	0.3%
8	Business Management	1	0.1%
8	Computer Graphics and Digital Imagery	1	0.1%
8	Computer Information Systems	1	0.1%

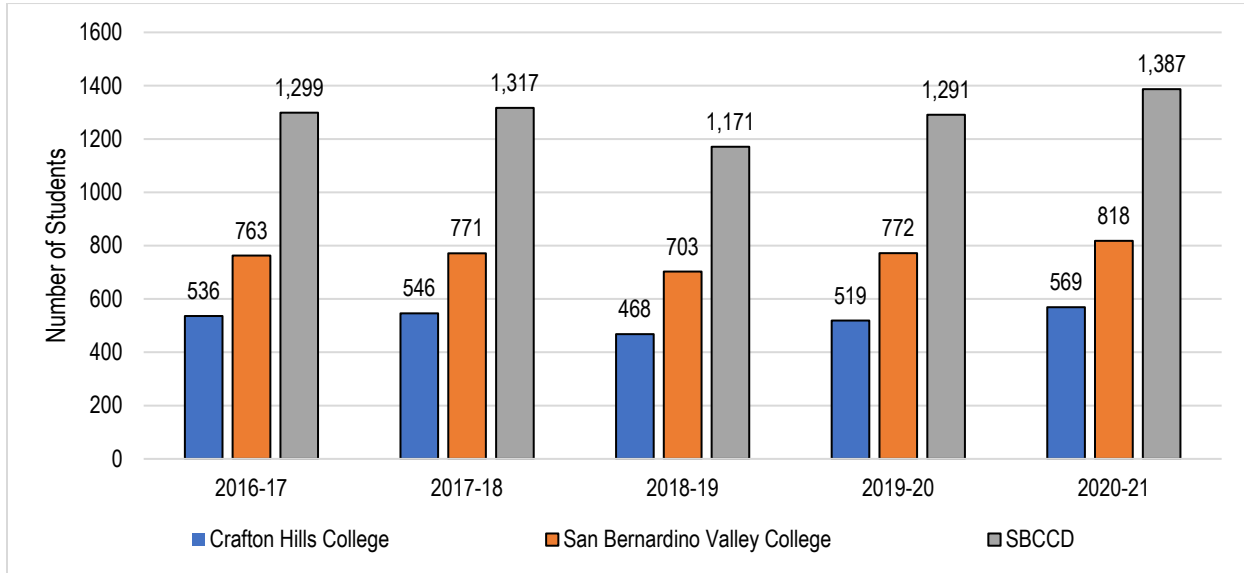
Awards and Certificates By Program, 2020-21: San Bernardino Valley College



Rank	Associate Degree Top Program	Count (N=1400)	Percent
1	Liberal Arts and Sciences, General	333	23.8%
2	Liberal Studies	180	12.9%
3	Business Administration	141	10.1%
4	Psychology, General	100	7.1%
5	Registered Nursing	99	7.1%
6	Administration of Justice	70	5.0%
7	Sociology	57	4.1%
8	Human Services	43	3.1%
9	Accounting	36	2.6%
10	Preschool Age Children	30	2.1%
11	Child Development/Early Care and Education	24	1.7%
12	Mathematics, General	23	1.6%
13	Speech Communication	20	1.4%
14	Library Technician (Aide)	18	1.3%
15	Kinesiology	17	1.2%
15	Psychiatric Technician	17	1.2%

Rank	Certificate Top Program	Count (N=975)	Percent
1	Transfer Studies	511	52.4%
2	Police Academy	216	22.2%
3	Psychiatric Technician	41	4.2%
4	Accounting	19	1.9%
4	Alcohol and Controlled Substances	19	1.9%
6	Preschool Age Children	17	1.7%
6	Automotive Collision Repair	17	1.7%
8	Health Information Coding	12	1.2%
8	Water and Wastewater Technology	12	1.2%
10	Environmental Control Technology	11	1.1%
11	Radio and Television	9	0.9%
11	Electronics and Electric Technology	9	0.9%
13	Geographic Information Systems	7	0.7%
13	Office Technology/Office Computer Applications	7	0.7%
15	Library Technician (Aide)	6	0.6%
15	Retail Store Operations and Management	6	0.6%

Annual Transfer Volume*, 2016-2017 through 2020-2021



	2016-17	2017-18	2018-19	2019-20	2020-21	5 Year Change	5 Year Average
Crafton Hills College	536	546	468	519	569	+6.2%	528
San Bernardino Valley College	763	771	703	772	818	+7.2%	765
SBCCD (Total)	1,299	1,317	1,171	1,291	1,387	+6.8%	1,293

*Note: Total number of Students Transferring to UC, CSU, out-of-state, and state private institutions

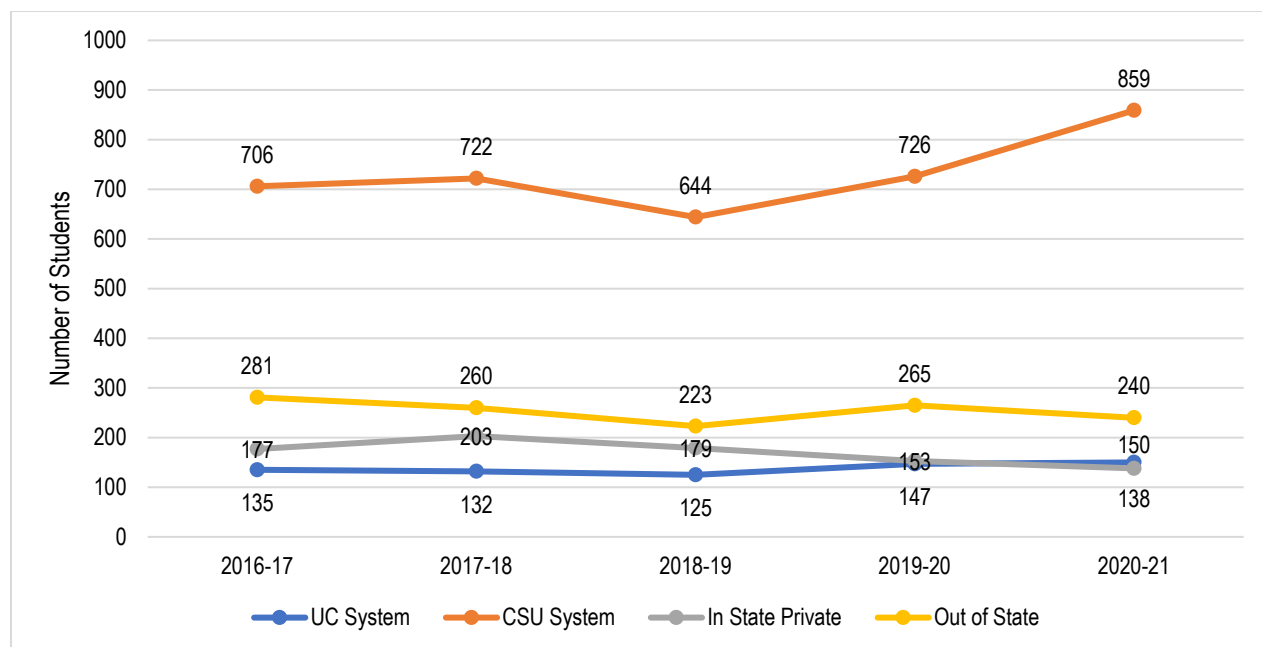
Sources: 1. Datamart Transfer Volume to In-State Private (ISP) and Out-of-State (OOS)

2. Volume of transfers to UC: <https://www.universityofcalifornia.edu/infocenter/admissions-source-school>

3. Volume of transfers to CSU: <http://www.calstate.edu/as/ccct/index.shtml>

Between 2016-17 and 2020-21, the annual transfer volume for SBCCD increased by 6.8%, from 1,299 in 2016-17 to 1,387 in 2020-21, with a five-year average of 1,293.

Transfer Volume (CSU, UC, In-State, and Out-of-State): SBCCD



	2016-17		2017-18		2018-19		2019-20		2020-21		5 Year Change	5 Year Average
UC System	135	10%	132	10%	125	11%	147	11%	150	11%	+11.1%	138
CSU System	706	54%	722	55%	644	55%	726	56%	859	62%	+21.7%	731
In State Private	177	14%	203	15%	179	15%	153	12%	138	10%	-22.0%	170
Out of State	281	22%	260	20%	223	19%	265	21%	240	17%	-14.6%	254
Total	1,299	100%	1,317	100%	1,171	100%	1,291	100%	1,387	100%	+6.8%	1,293

Sources: 1. Datamart Transfer Volume to In-State Private (ISP) and Out-of-State (OOS)

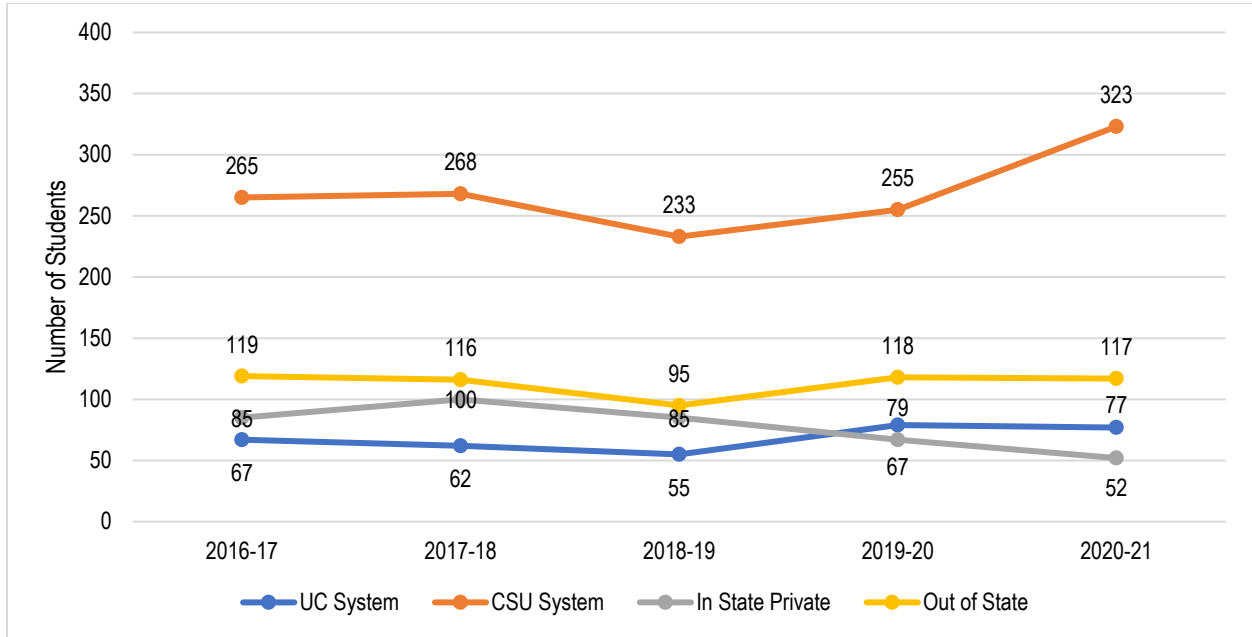
2. Volume of transfers to UC: <https://www.universityofcalifornia.edu/infocenter/admissions-source-school>

3. Volume of transfers to CSU: <http://www.calstate.edu/as/ccct/index.shtml>

Between 2016-17 and 2020-21, the annual transfer volume for SBCCD increased by 6.8%, from 1,299 in 2016-17 to 1,387 in 2020-21, with a five-year average of 1,293. Transfer volume increased to the CSU system (+21.7%) and the UC system (+11.1%), while there was a decrease in transfer volume to in state private institutions (-22.0%) and out-of-state institutions (-14.6%).

Over this period, of total students who transferred from both colleges in the District, on average, 56.6% transferred to the California State University (CSU), followed by students who transferred to out-of-state institutions (19.6%), in-state private institutions (13.1%), and the University of California System (10.7%).

Transfer Volume (CSU, UC, In-State, and Out-of-State): Crafton Hills College



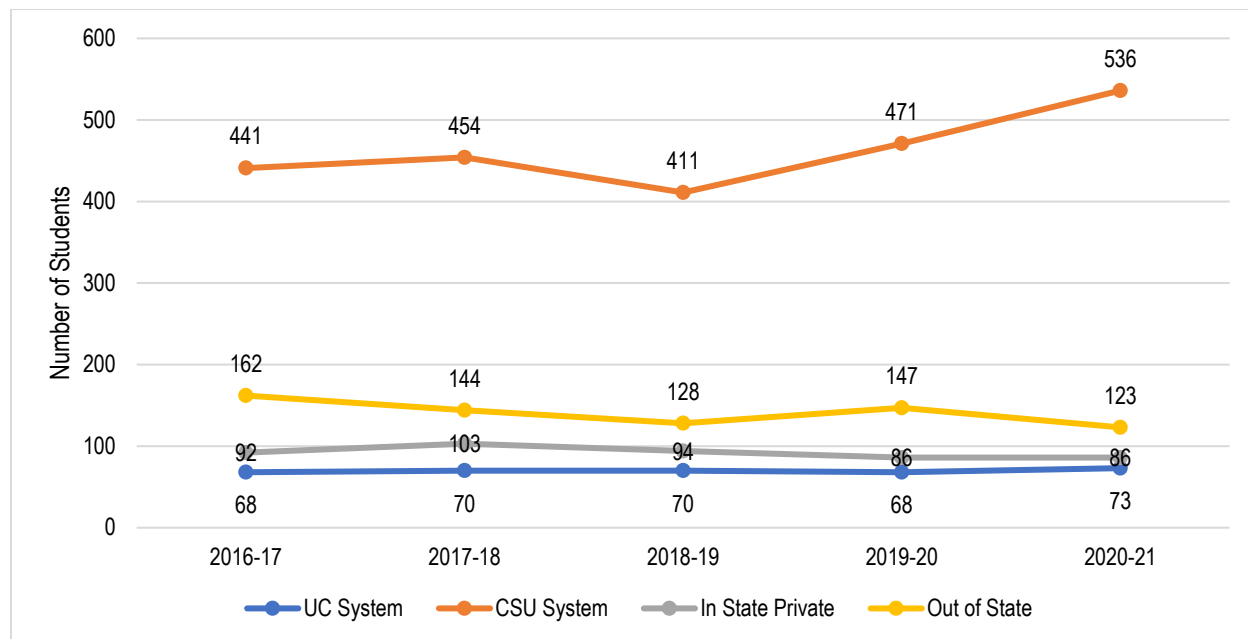
	2016-17		2017-18		2018-19		2019-20		2020-21		5 Year Change	5 Year Average
UC System	67	13%	62	11%	55	12%	79	15%	77	14%	+14.9%	68
CSU System	265	49%	268	49%	233	50%	255	49%	323	57%	+21.9%	269
In State Private	85	16%	100	18%	85	18%	67	13%	52	9%	-38.8%	78
Out of State	119	22%	116	21%	95	20%	118	23%	117	21%	-1.7%	113
Total	536	100%	546	100%	468	100%	519	100%	569	100%	+6.2%	528

Sources: 1. Datamart Transfer Volume to In-State Private (ISP) and Out-of-State (OOS)
 2. Volume of transfers to UC: <https://www.universityofcalifornia.edu/infocenter/admissions-source-school>
 3. Volume of transfers to CSU: <http://www.calstate.edu/as/ccct/index.shtml>

Between 2016-17 and 2020-21, the annual transfer volume for Crafton Hills College increased by 6.2%, from 536 in 2016-17 to 569 in 2020-21, with a five-year average of 528. Transfer volume increased to the UC system (+14.9%) and the CSU system (+21.9%), while there was a decrease in transfer volume to in state private institutions (-38.8%) and out-of-state institutions (-1.7%).

Over this period, of total students who transferred, on average, 50.9% transferred to the California State University (CSU), followed by students who transferred to out-of-state institutions (21.4%), in-state private institutions (14.7%), and the University of California System (12.9%).

Transfer Volume (CSU, UC, In-State, and Out-of-State): San Bernardino Valley College



	2016-17		2017-18		2018-19		2019-20		2020-21		5 Year Change	5 Year Average
UC System	68	9%	70	9%	70	10%	68	9%	73	9%	+7.4%	70
CSU System	441	58%	454	59%	411	58%	471	61%	536	66%	+21.5%	463
In State Private	92	12%	103	13%	94	13%	86	11%	86	11%	-6.5%	92
Out of State	162	21%	144	19%	128	18%	147	19%	123	15%	-24.1%	141
Total	763	100%	771	100%	703	100%	772	100%	818	100%	+7.2%	765

Sources: 1. Datamart Transfer Volume to In-State Private (ISP) and Out-of-State (OOS)

2. Volume of transfers to UC: <https://www.universityofcalifornia.edu/infocenter/admissions-source-school>

3. Volume of transfers to CSU: <http://www.calstate.edu/as/ccct/index.shtml>

Between 2016-17 and 2020-21, the annual transfer volume for San Bernardino Valley College increased by 7.2%, from 763 in 2016-17 to 818 in 2020-21, with a five-year average of 765. Transfer volume increased to the CSU system (+21.5%) and the UC system (+7.4%), while there was a decrease in transfer volume to in state private institutions (-6.5%), and out-of-state institutions (-24.1%).

Over this period, of total students who transferred, on average, 60.4% transferred to the California State University (CSU), followed by students who transferred to out-of-state institutions (18.4%), in-state private institutions (12.0%), and the University of California System (9.1%).

Top Ten Transfers to a Four-Year University: 2020-21

SBCCD

Ranking	University	Students (N=1,387)	Percent
1	CSU-San Bernardino	648	46.7%
2	UC-Riverside	94	6.8%
3	CSU-Pomona	73	5.3%
4	Western Governors University	35	2.5%
5	California Baptist University	33	2.4%
6	CSU-Fullerton	30	2.2%
7	West Coast University-Los Angeles	29	2.1%
8	Southern New Hampshire University	26	1.9%
8	University Of Redlands	23	1.7%
10	CSU-LA	21	1.5%
10	Grand Canyon University	21	1.5%

Crafton Hills College

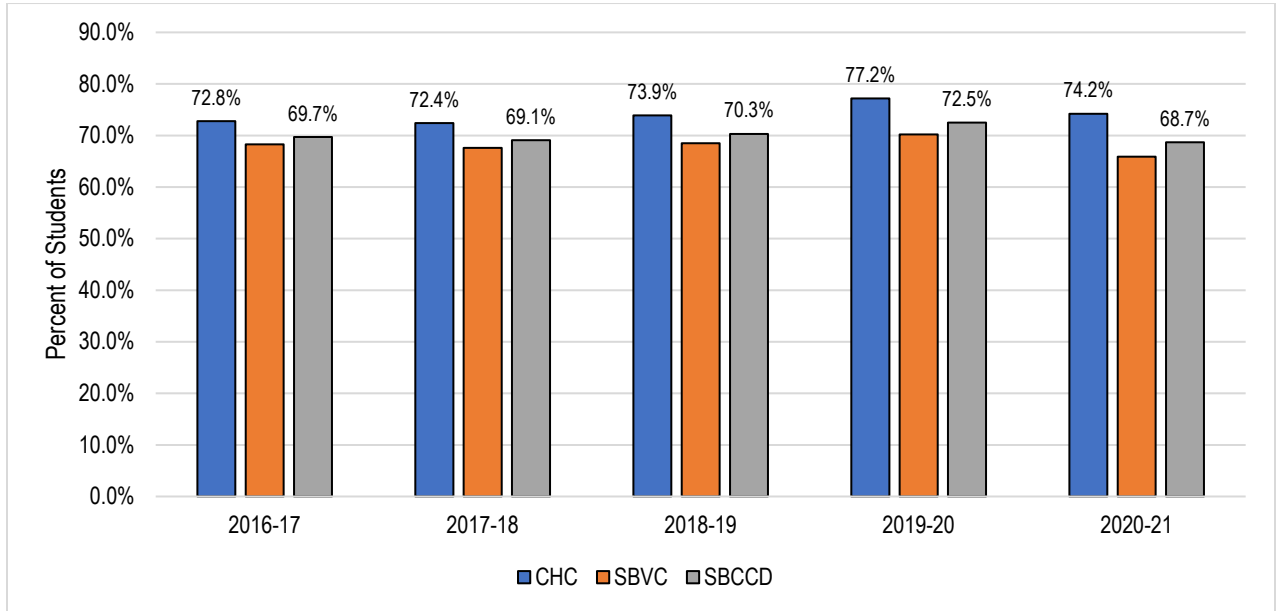
Ranking	University	Students (N=569)	Percent
1	CSU San Bernardino	243	42.7%
2	UC Riverside	48	8.4%
3	CSU-Pomona	25	4.4%
4	Western Governors University	21	3.7%
5	California Baptist University	14	2.5%
5	University Of Redlands	14	2.5%
5	Southern New Hampshire University	14	2.5%
8	CSU-Fullerton	13	2.3%
9	Grand Canyon University	11	1.9%
10	West Coast University-Los Angeles	10	1.8%

San Bernardino Valley College

Ranking	University	Students (N=818)	Percent
1	CSU San Bernardino	405	49.5%
2	CSU-Pomona	48	5.9%
3	UC Riverside	46	5.6%
4	West Coast University-Los Angeles	19	2.3%
4	California Baptist University	19	2.3%
6	CSU-Fullerton	17	2.1%
6	CSU-LA	15	1.8%
8	Western Governors University	14	1.7%
9	Southern New Hampshire University	12	1.5%
10	Grand Canyon University	10	1.2%

Sources: 1. Datamart Transfer Volume to In-State Private (ISP) and Out-of-State (OOS)
 2. Volume of transfers to UC: <https://www.universityofcalifornia.edu/infocenter/admissions-source-school>
 3. Volume of transfers to CSU: <http://www.calstate.edu/as/ccct/index.shtml>

Course Success Rates



	2016-17	2017-18	2018-19	2019-20	2020-21	5 Year Change	5 Year Average
Crafton Hills College	72.8%	72.4%	73.9%	77.2%	74.2%	+1.4%	74.1%
San Bernardino Valley College	68.3%	67.6%	68.5%	70.2%	65.9%	-2.4%	68.1%
San Bernardino CCD	69.7%	69.1%	70.3%	72.5%	68.7%	-1.0%	70.1%

Source: CCCC MIS Referential Data Files.

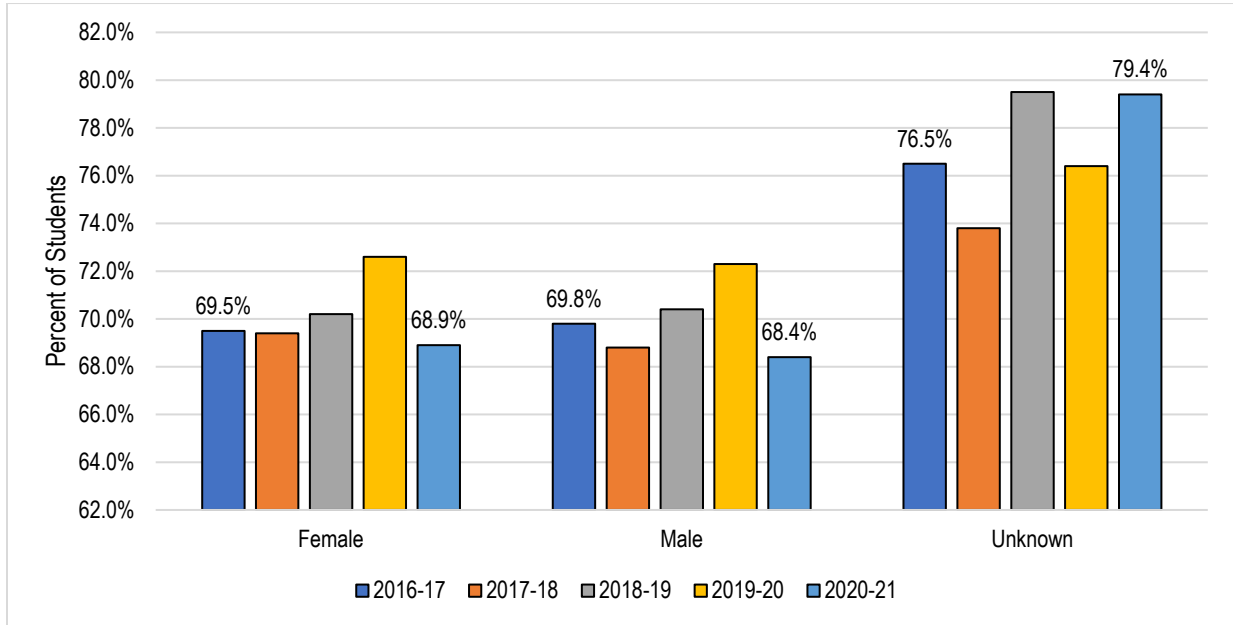
Success Rate = (A, B, C, P, IA, IB, IC, and IPP Grades / A, B, C, D, F, P, NP, I*, IPP, INP, FW, and W Grades) * 100

Note that Excused withdrawal "EW" occurs when a student is permitted to withdraw from a course(s) due to COVID-19 crisis.

This grade is not counted as an enrollment attempt.

Between 2016-17 and 2020-21, the annual success rate of students from both colleges in the District declined by 1.0 percent points, from 69.7% in 2016-17 to 68.7% in 2020-21, with a five-year average of 70.1%.

Course Success Rates by Gender: SBCCD

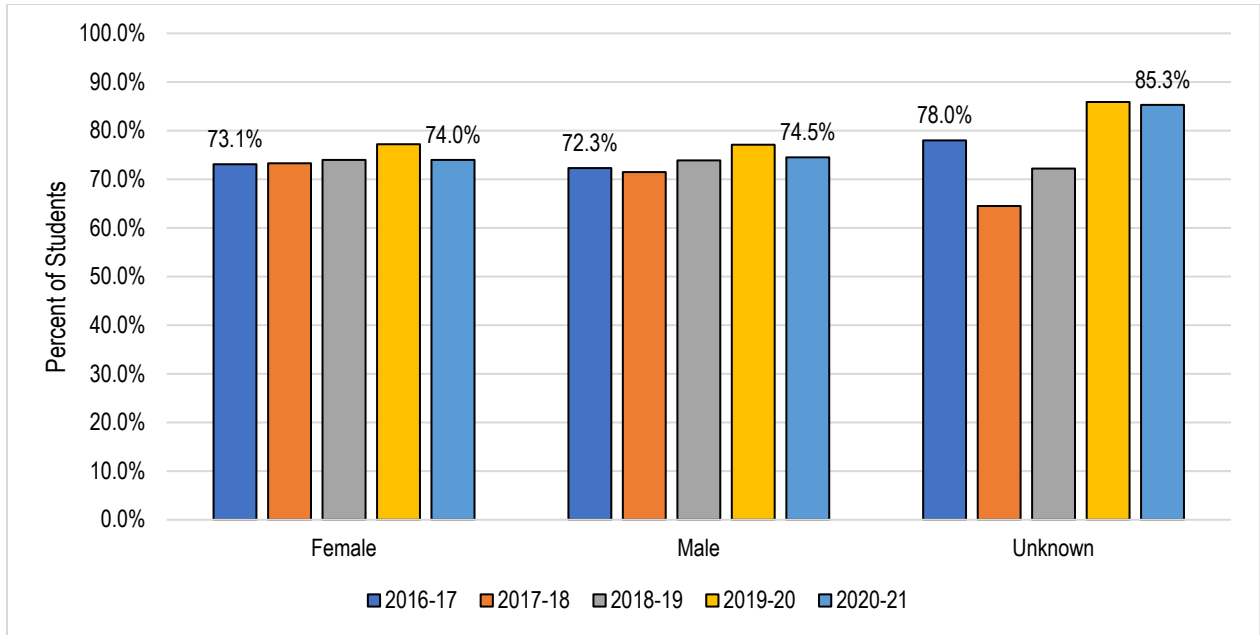


	2016-17	2017-18	2018-19	2019-20	20-21	5 Year Change	5 Year Average
Female	69.5%	69.4%	70.2%	72.6%	68.9%	-0.6%	70.1%
Male	69.8%	68.8%	70.4%	72.3%	68.4%	-1.4%	69.9%
Unknown	76.5%	73.8%	79.5%	76.4%	79.4%	2.9%	77.0%
Total	69.7%	69.1%	70.3%	72.5%	68.7%	-1.0%	70.1%

Source: CCCC MIS Referential Data Files.

On average, between 2016-17 and 2020-21, female students had a slightly higher success rate than male students (70.1% vs 69.9%, respectively). Over this period, the success rates for female and male students declined by 0.6% and 1.4%, respectively.

Course Success Rates by Gender: Crafton Hills College

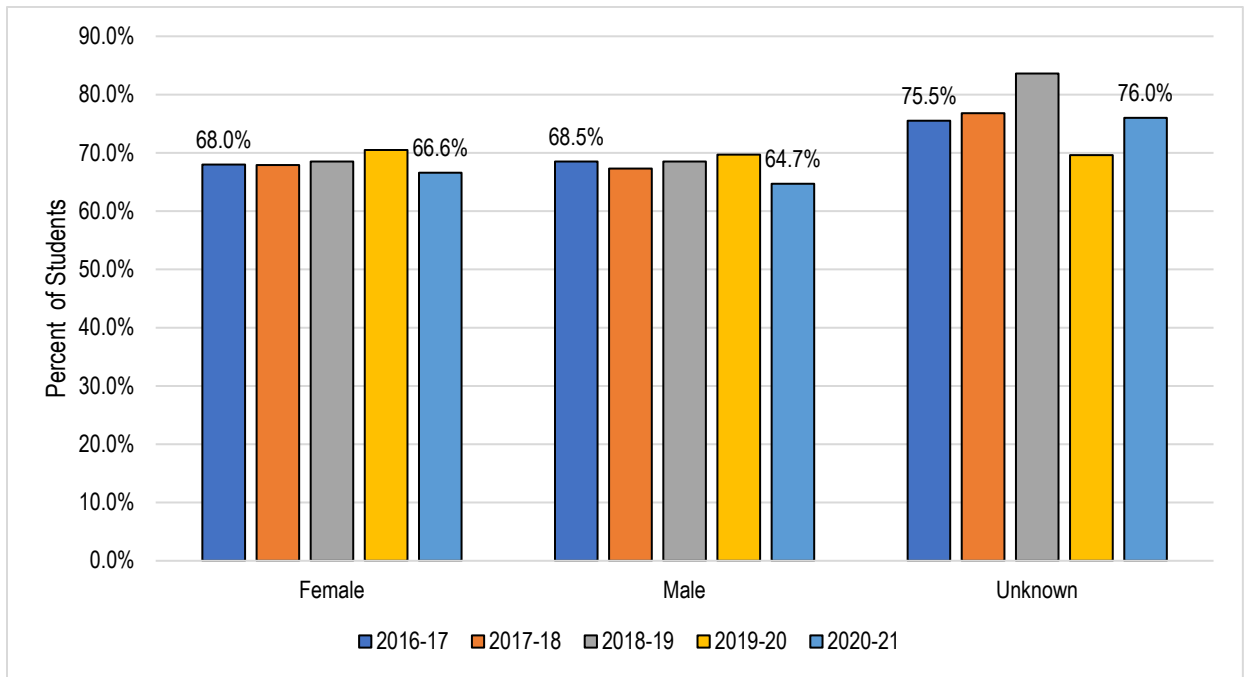


	2016-17	2017-18	2018-19	2019-20	2020-21	5 Year Change	5 Year Average
Female	73.1%	73.3%	74.0%	77.2%	74.0%	+0.9%	74.4%
Male	72.3%	71.5%	73.9%	77.1%	74.5%	+2.2%	73.9%
Unknown	78.0%	64.5%	72.2%	85.9%	85.3%	+7.3%	77.8%
Total	72.8%	72.4%	73.9%	77.2%	74.2%	+1.4%	74.1%

Source: CCCC MIS Referential Data Files.

On average, between 2016-17 and 2020-21, female students had a slightly higher success rate than male students (74.4% vs 73.9%, respectively). Over this period, the success rates for female and male students increased by 0.9% and 2.2%, respectively.

Course Success Rates by Gender: San Bernardino Valley College

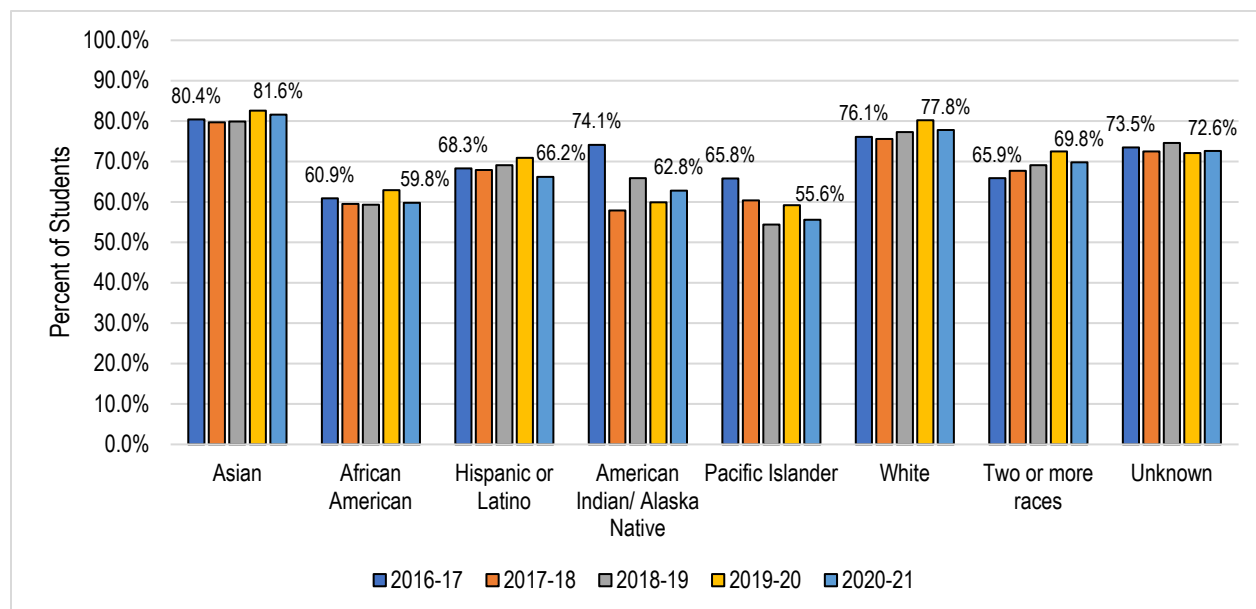


	2016-17	2017-18	2018-19	2019-20	2020-21	5 Year Change	5 Year Average
Female	68.0%	67.9%	68.5%	70.5%	66.6%	-1.4%	68.3%
Male	68.5%	67.3%	68.5%	69.7%	64.7%	-3.8%	67.8%
Unknown	75.5%	76.8%	83.6%	69.6%	76.0%	+0.5%	76.6%
Total	68.3%	67.6%	68.5%	70.2%	65.9%	-2.4%	68.1%

Source: CCCC MIS Referential Data Files.

On average, between 2016-17 and 2020-21, female students had a slightly higher success rate than male students (68.3% vs 67.8%, respectively). Over this period, the success rates for female and male students declined by 1.4% and 3.8%, respectively.

Course Success Rates by Race/Ethnicity: SBCCD



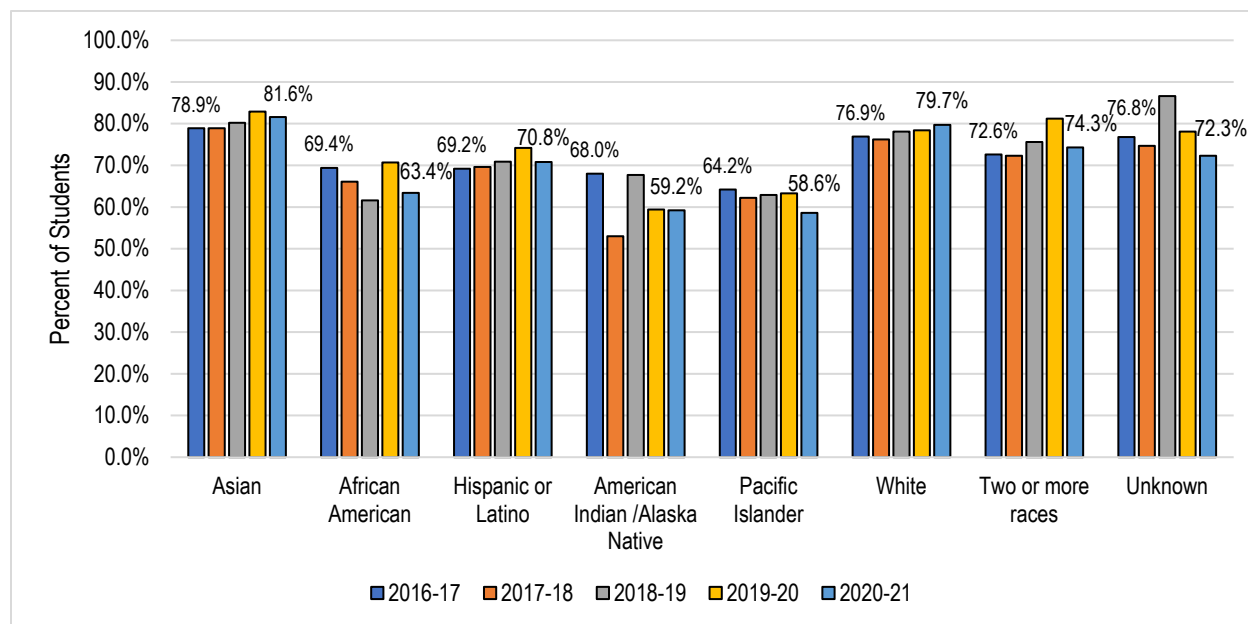
	2016-17	2017-18	2018-19	2019-20	2020-21	5 Year Change	5 Year Average
Asian	80.4%	79.7%	79.9%	82.6%	81.6%	+1.2%	80.9%
African American	60.9%	59.5%	59.3%	62.9%	59.8%	-1.1%	60.5%
Hispanic or Latino	68.3%	67.9%	69.1%	70.9%	66.2%	-2.1%	68.5%
American Indian /Alaska Native	74.1%	57.9%	65.9%	59.9%	62.8%	-11.3%	64.7%
Pacific Islander	65.8%	60.4%	54.4%	59.2%	55.6%	-10.2%	59.2%
White	76.1%	75.6%	77.3%	80.2%	77.8%	+1.7%	77.3%
Two or more races	65.9%	67.7%	69.1%	72.5%	69.8%	+3.9%	69.1%
Unknown	73.5%	72.5%	74.6%	72.1%	72.6%	-0.9%	72.6%
Total Average	69.7%	69.1%	70.3%	72.5%	68.7%	-1.0%	70.1%

Source: CCCC MIS Referential Data Files.

On average, between 2016-17 and 2020-21, Asian students had the highest success rate (80.9%). The second highest were White students with 77.3%. The lowest were African American students (60.5%) and Pacific Islander students (59.2%).

Over this period, the success rates of Multiracial (+3.9%), White (+1.7%), and Asian (+1.2%) students increased while the success rates of American Indian/Alaska Native (-11.3%), Pacific Islander (-10.2%), Hispanic (-2.1%), and African American (-1.2%) students decreased.

Course Success Rates by Race/Ethnicity: Crafton Hills College



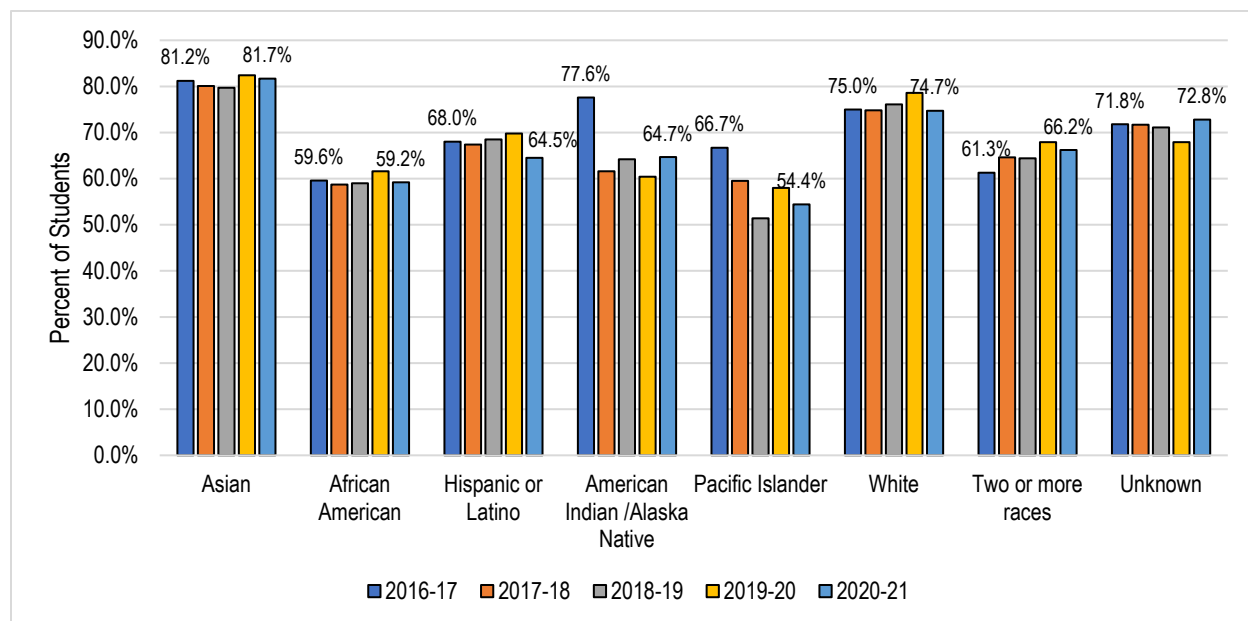
	2016-17	2017-18	2018-19	2019-20	2020-21	5 Year Change	5 Year Average
Asian	78.9%	78.9%	80.2%	82.9%	81.6%	+2.7%	80.6%
African American	69.4%	66.1%	61.6%	70.7%	63.4%	-6.0%	66.3%
Hispanic or Latino	69.2%	69.6%	70.9%	74.2%	70.8%	+1.6%	71.0%
American Indian /Alaska Native	68.0%	53.0%	67.7%	59.4%	59.2%	-8.8%	61.6%
Pacific Islander	64.2%	62.2%	62.9%	63.3%	58.6%	-5.6%	62.3%
White	76.9%	76.2%	78.1%	78.4%	79.7%	+2.8%	78.3%
Two or more races	72.6%	72.3%	75.6%	81.2%	74.3%	+1.7%	74.7%
Unknown	76.8%	74.7%	86.6%	78.1%	72.3%	-4.5%	76.2%
Total Average	72.8%	72.4%	73.9%	77.2%	74.2%	+1.4%	74.1%

Source: CCCC MIS Referential Data Files.

On average, between 2016-17 and 2020-21, Asian students had the highest success rate (80.6%). The second highest were White students with 78.3%. The lowest were American Indian /Alaska Native students with 61.6%.

Over this period, the success rates of White (+2.8%), Asian (+2.7%), Multiracial (+1.7%), and Hispanic (+1.6%) students increased while the success rates of American Indian /Alaska Native (-8.8%), African American (-6.0%), and Pacific Islander (-5.6%) students decreased.

Course Success Rates by Race/Ethnicity: San Bernardino Valley College



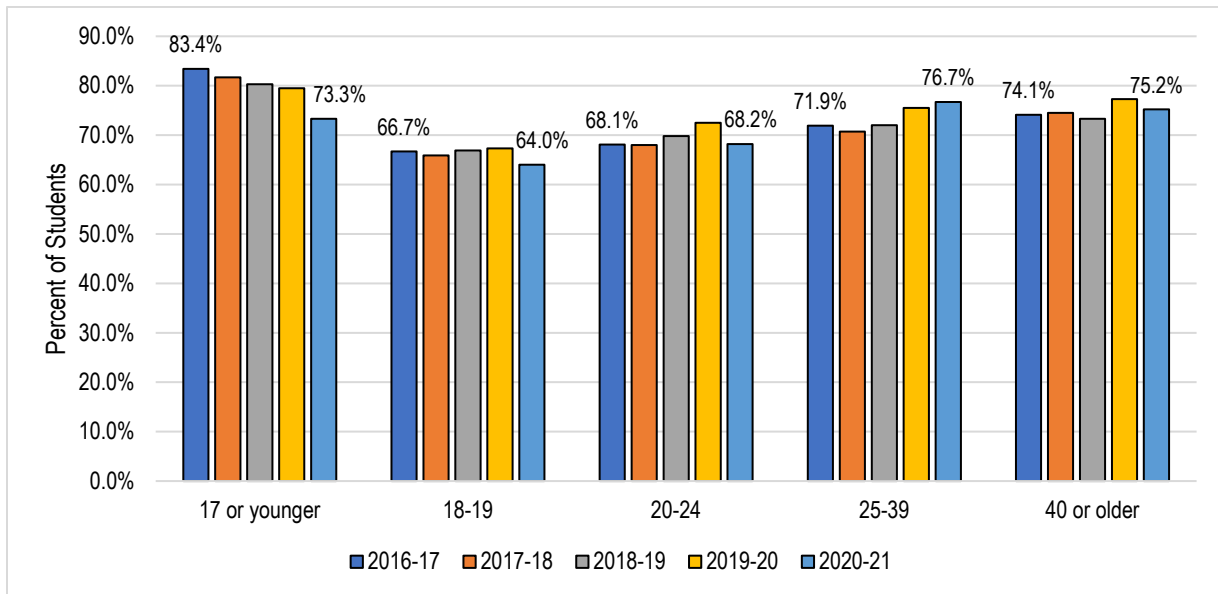
	2016-17	2017-18	2018-19	2019-20	2020-21	5 Year Change	5 Year Average
Asian	81.2%	80.1%	79.7%	82.4%	81.7%	+0.5%	81.0%
African American	59.6%	58.7%	59.0%	61.6%	59.2%	-0.4%	59.6%
Hispanic or Latino	68.0%	67.4%	68.5%	69.8%	64.5%	-3.5%	67.7%
American Indian /Alaska Native	77.6%	61.6%	64.2%	60.4%	64.7%	-12.9%	67.0%
Pacific Islander	66.7%	59.5%	51.4%	58.0%	54.4%	-12.3%	57.9%
White	75.0%	74.8%	76.1%	78.6%	74.7%	-0.3%	75.8%
Two or more races	61.3%	64.6%	64.4%	67.9%	66.2%	+4.9%	64.9%
Unknown	71.8%	71.7%	71.1%	67.9%	72.8%	+1.0%	70.4%
Total Average	68.3%	67.6%	68.5%	70.2%	65.9%	-2.4%	68.1%

Source: CCCC MIS Referential Data Files.

On average, between 2016-17 and 2020-21, Asian students had the highest success rate (81.0%). The second highest were white students with 75.8%. The lowest were Pacific Islander students with 57.9%.

Over this period, the success rates of Multiracial (+4.9%) and Asian (+0.5%) students increased, while the success rate of American Indian /Alaska Native (-12.9%), Pacific Islander (-12.3%), Hispanic (-3.5%), African American (-0.4%), and White (-0.3%) students decreased.

Course Success Rates by Age: SBCCD



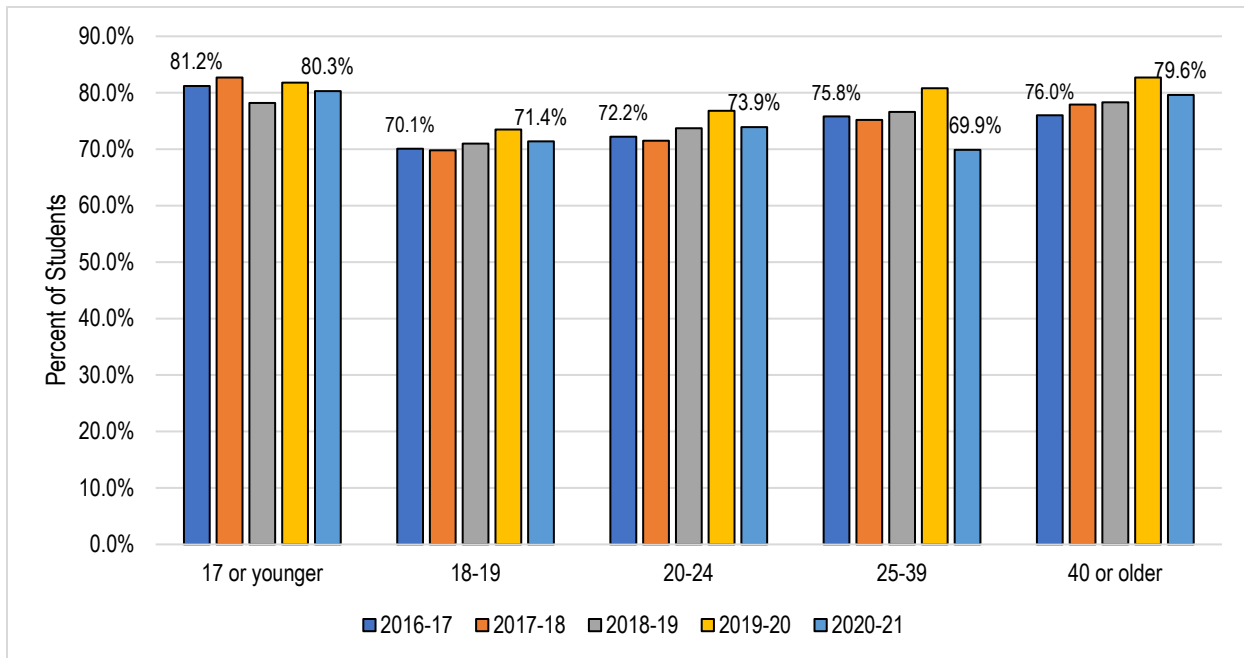
	2016-17	2017-18	2018-19	2019-20	2020-21	5 Year Change	5 Year Average
17 or younger	83.4%	81.7%	80.3%	79.5%	73.3%	-10.1%	79.4%
18-19	66.7%	65.9%	66.9%	67.3%	64.0%	-2.7%	66.2%
20-24	68.1%	68.0%	69.8%	72.5%	68.2%	+0.1%	69.3%
25-39	71.9%	70.7%	72.0%	75.5%	76.7%	+4.8%	72.7%
40 or older	74.1%	74.5%	73.3%	77.3%	75.2%	+1.1%	74.9%
Total Average	69.7%	69.1%	70.3%	72.5%	68.7%	-1.0%	70.1%

Source: CCCC MIS Referential Data Files.

On average, between 2016-17 and 2020-21, students under 17 years old had the highest success rate (79.4%). The lowest success rate was seen in students 18-19 years old (66.2%) and students 20-24 years old (69.3%).

Over this period, the success rate of students 25-39 years old (+4.8%), students over 40 years old (+1.1%), and students 20-24 years old (+0.1%) increased while the success rates of students under 17 years old (-10.1%) and students 18-19 years old (-2.7%) decreased.

Course Success Rates by Age: Crafton Hills College



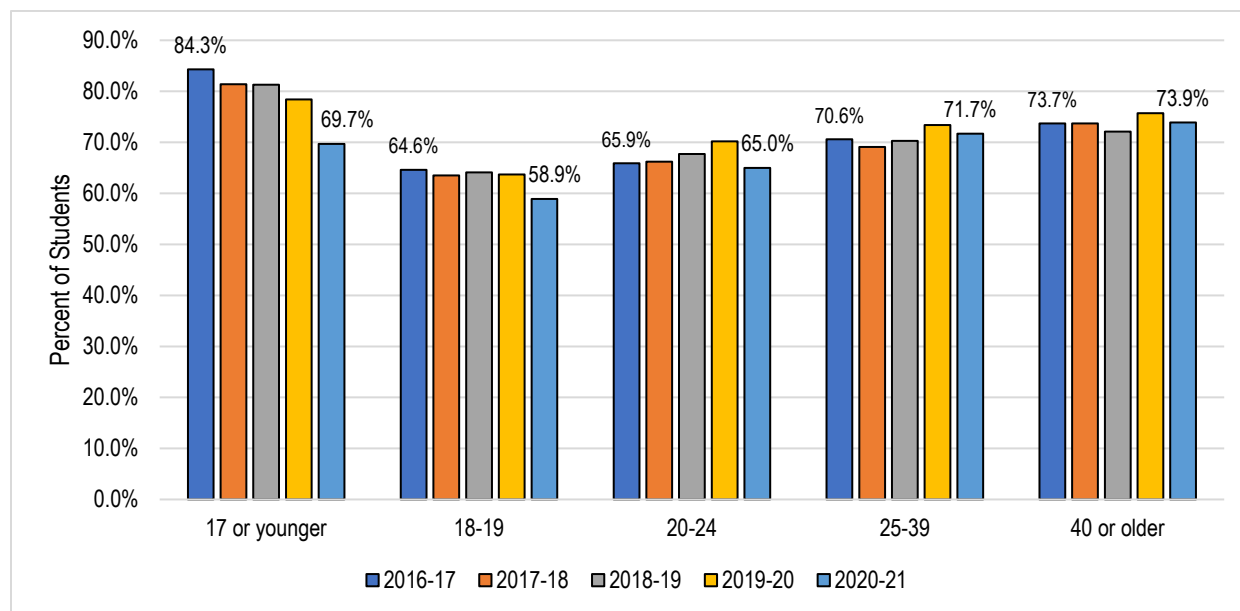
	2016-17	2017-18	2018-19	2019-20	2020-21	5 Year Change	5 Year Average
17 or younger	81.2%	82.7%	78.2%	81.8%	80.3%	-0.9%	80.8%
18-19	70.1%	69.8%	71.0%	73.5%	71.4%	+1.3%	71.2%
20-24	72.2%	71.5%	73.7%	76.8%	73.9%	+1.7%	73.5%
25-39	75.8%	75.2%	76.6%	80.8%	69.9%	-5.9%	74.3%
40 or older	76.0%	77.9%	78.3%	82.7%	79.6%	+3.6%	79.1%
Total Average	72.8%	72.4%	73.9%	77.2%	74.2%	+1.4%	74.1%

Source: CCCC MIS Referential Data Files.

On average, between 2016-17 and 2020-21, the age groups with the highest success rates were students under 17 years old (80.8%) and students over 40 years old (79.1%). The lowest success rate was seen in students 18-19 years old (71.2%).

Over this period, the success rate of students over 40 years old (+3.6%), students 20-24 years old (+1.7%), and students 18-19 years old (+1.3%) increased while the success rates of students 25-39 years old (-5.9%) and students under 17 years old (-0.9%) decreased.

Course Success Rates by Age: San Bernardino Valley College



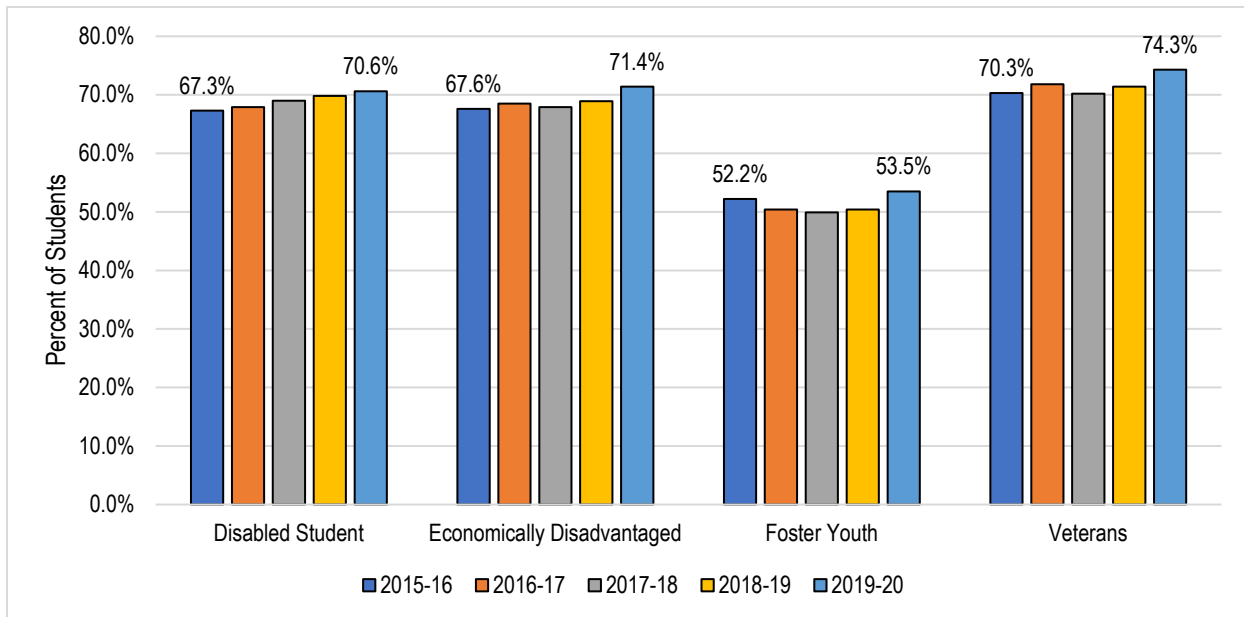
	2016-17	2017-18	2018-19	2019-20	2020-21	5 Year Change	5 Year Average
17 or younger	84.3%	81.4%	81.3%	78.4%	69.7%	-14.6%	78.8%
18-19	64.6%	63.5%	64.1%	63.7%	58.9%	-5.7%	63.0%
20-24	65.9%	66.2%	67.7%	70.2%	65.0%	-0.9%	67.0%
25-39	70.6%	69.1%	70.3%	73.4%	71.7%	+1.1%	71.0%
40 or older	73.7%	73.7%	72.1%	75.7%	73.9%	+0.2%	73.8%
Total Average	68.3%	67.6%	68.5%	70.2%	65.9%	-2.4%	68.1%

Source: CCCC MIS Referential Data Files.

On average, between 2016-17 and 2020-21, the age groups with the highest success rates were students under 17 years old (78.8%), while the lowest success rate was seen in students 18-19 years old (63.0%).

Over this period, the success rate of students 25-39 years old (+2.8%) and students over 40 years old (+0.2%) increased, while the success rates of students under 17 years old (-14.6%), students 18-19 years (-5.7%), and students 20-24 years old (-0.9%) declined.

Course Success Rates by Special Population: SBCCD



	2016-17	2017-18	2018-19	2019-20	2020-21	5 Year Change	5 Year Average
Disabled Student	67.9%	69.0%	69.8%	70.6%	71.7%	+3.8%	69.7%
Economically Disadvantaged*	68.5%	67.9%	68.9%	71.4%	68.0%	-0.5%	69.0%
Foster Youth	50.4%	49.9%	50.4%	53.5%	53.4%	+3.0%	51.5%
Veterans	71.8%	70.2%	71.4%	74.3%	73.4%	+1.6%	72.1%
Total Average	69.7%	69.1%	70.3%	72.5%	68.7%	-1.0%	70.1%

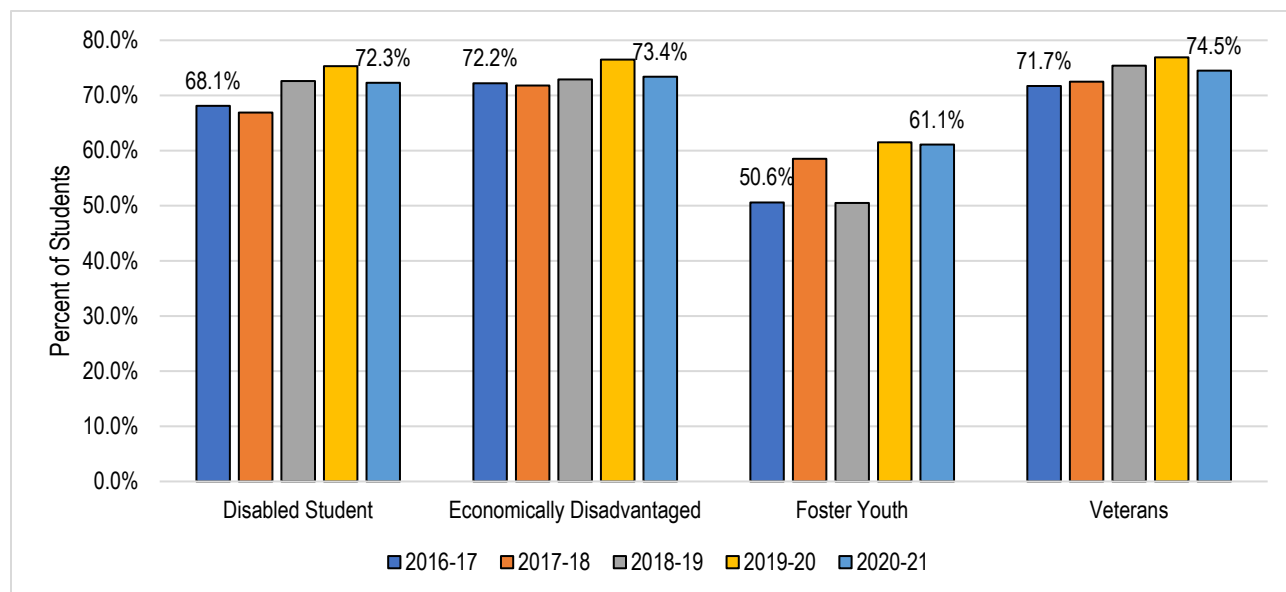
Source: CCCC MIS Referential Data Files.

* Note: Economical Disadvantage Status for Perkins was defined in the Student Success Metrics: Metric Definition Directory https://www.calpassplus.org/Launchboard/Student-Success-Metrics-DED#_Toc2682967

On average, between 2016-17 and 2020-21, veteran students had the highest success rate (72.1%). The average success rates of foster youth students (51.5%), economically disadvantaged students (69.0%), and students with disabilities (69.7%) were lower than the average success rate for SBCCD (70.1%).

Over this period, the success rates of the students with disabilities, foster youth students, and veteran students increased by 3.8% and 3.0% and 1.6%, respectively.

Course Success Rates by Special Population: Crafton Hills College



	2016-17	2017-18	2018-19	2019-20	2020-21	5 Year Change	5 Year Average
Disabled Student	68.1%	66.9%	72.6%	75.3%	72.3%	+4.2%	71.7%
Economically Disadvantaged*	72.2%	71.8%	72.9%	76.5%	73.4%	+1.2%	73.1%
Foster Youth	50.6%	58.5%	50.5%	61.5%	61.1%	+10.5%	56.9%
Veterans	71.7%	72.5%	75.4%	76.9%	74.5%	+2.8%	74.1%
Total Average	72.8%	72.4%	73.9%	77.2%	74.2%	+1.4%	74.1%

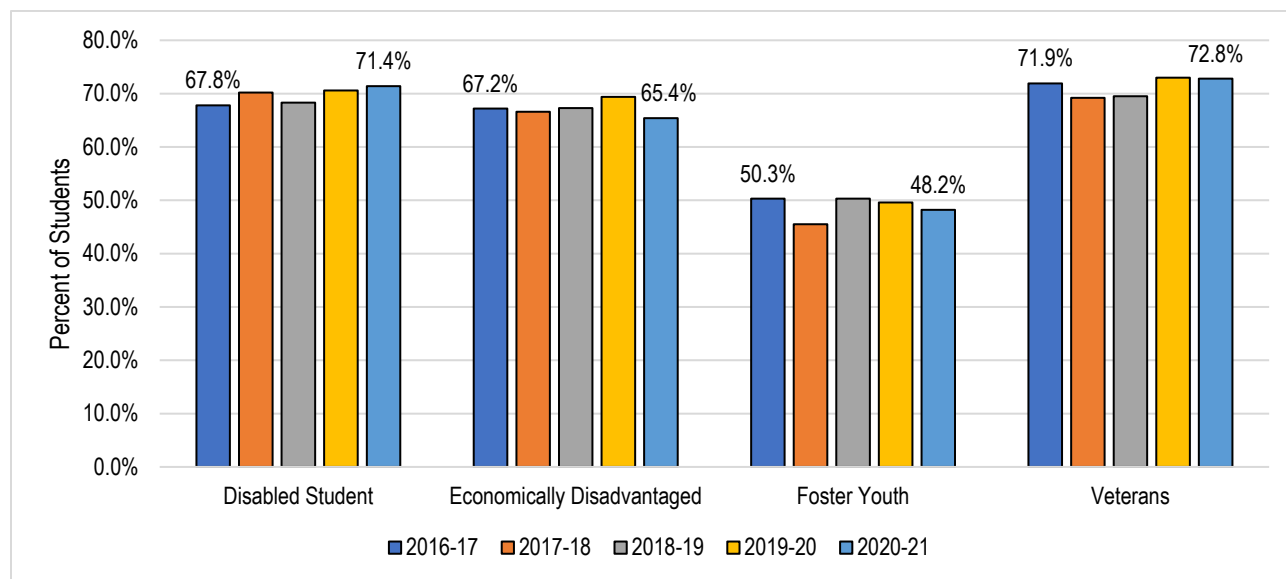
Source: CCCC MIS Referential Data Files.

* Note: Economical Disadvantage Status for Perkins was defined in the Student Success Metrics: Metric Definition Directory https://www.calpassplus.org/Launchboard/Student-Success-Metrics-DED#_Toc2682967

On average, between 2016-17 and 2020-21, veteran students had the highest success rate (74.1%). The average success rates of foster youth students (56.9%), students with disabilities (71.7%), and economically disadvantaged students (73.1%) were lower than the average overall success rate for Crafton Hills College (74.1%).

Over this period, the success rates of the foster youth students, students with disabilities, and veteran students increased by 10.5% and 4.2% and 2.8%, respectively.

Course Success Rates by Special Population: San Bernardino Valley College



	2016-17	2017-18	2018-19	2019-20	2020-21	5 Year Change	5 Year Average
Disabled Student	67.8%	70.2%	68.3%	70.6%	71.4%	+3.6%	69.6%
Economically Disadvantaged*	67.2%	66.6%	67.3%	69.4%	65.4%	-1.8%	67.3%
Foster Youth	50.3%	45.5%	50.3%	49.6%	48.2%	-2.1%	48.8%
Veterans	71.9%	69.2%	69.5%	73.0%	72.8%	+0.9%	71.1%
Total Average	68.3%	67.6%	68.5%	70.2%	65.9%	-2.4%	68.1%

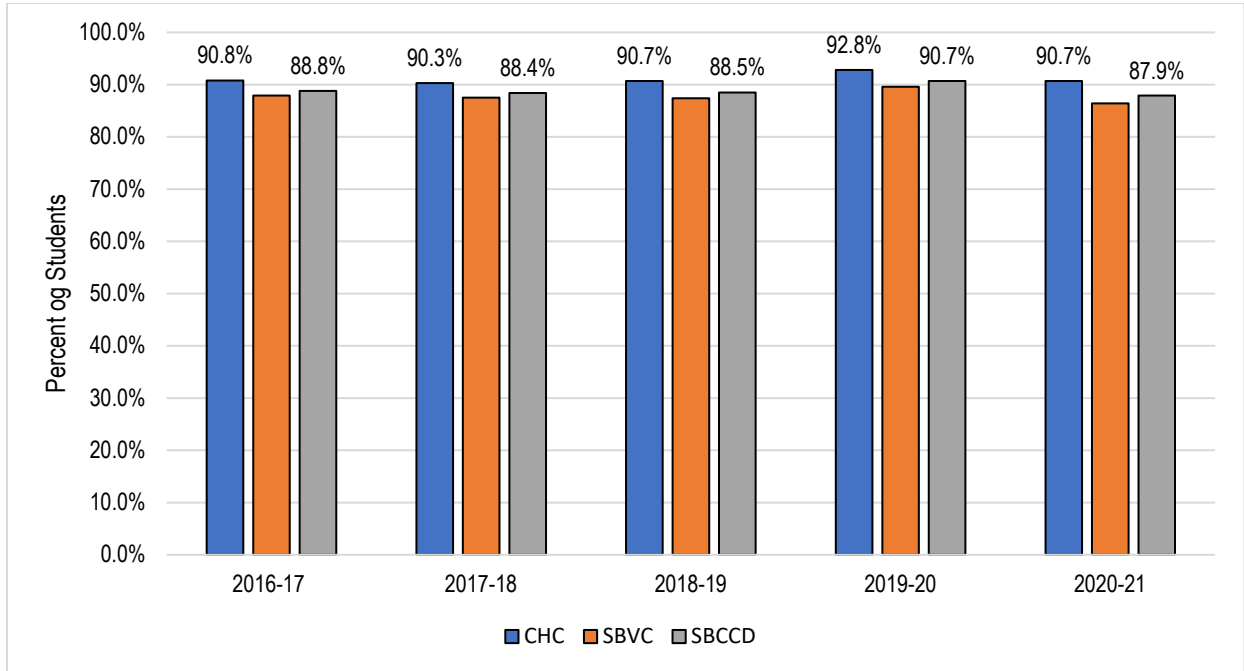
Source: CCCC MIS Referential Data Files.

* Note: Economical Disadvantage Status for Perkins was defined in the Student Success Metrics: Metric Definition Directory https://www.calpassplus.org/Launchboard/Student-Success-Metrics-DED#_Toc2682967

On average, between 2016-17 and 2020-21, veteran students had the highest success rate (71.1%). The average success rates of foster youth students (48.8%), economically disadvantaged students (67.3%) were lower than the average overall success rate for San Bernardino Valley College (68.1%).

Over this period, the success rates of the foster youth students and economically disadvantaged students declined by 2.1% and 1.8%, respectively.

Course Retention Rates



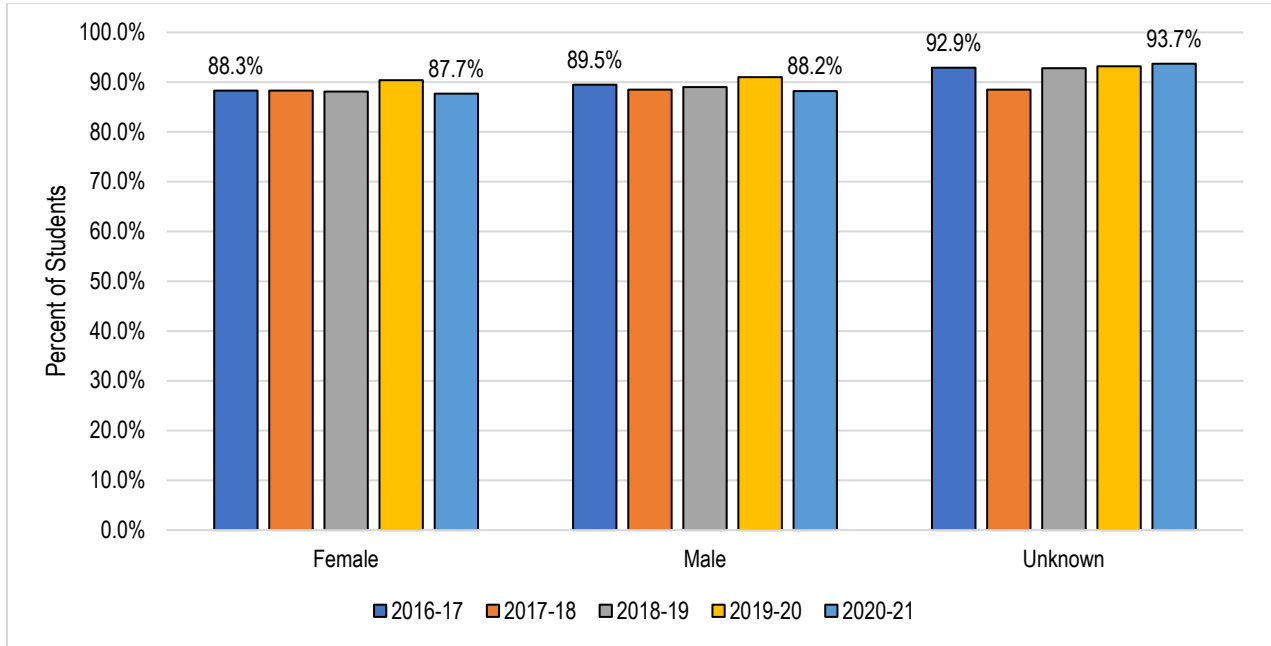
	2016-17	2017-18	2018-19	2019-20	2020-21	5 Year Change	5 Year Average
Crafton Hills College	90.8%	90.3%	90.7%	92.8%	90.7%	-0.1%	91.1%
San Bernardino Valley College	87.9%	87.5%	87.4%	89.6%	86.4%	-1.5%	87.8%
SBCCD (Total)	88.8%	88.4%	88.5%	90.7%	87.9%	-0.9%	88.9%

Source: CCCC MIS Referential Data Files.

Retention Rate = (A, B, C, D, F, I*, IPP, P, NP, and FW Grades / A, B, C, D, F, FW, I*, IPP, P, NP, FW, and W Grades) * 100

The annual course retention rate of students from both colleges in the District declined by 0.9 percentage points, from 88.8% in 2016-17 to 87.9% in 2020-21, with a five-year average of 88.9%.

Course Retention Rates by Gender: SBCCD

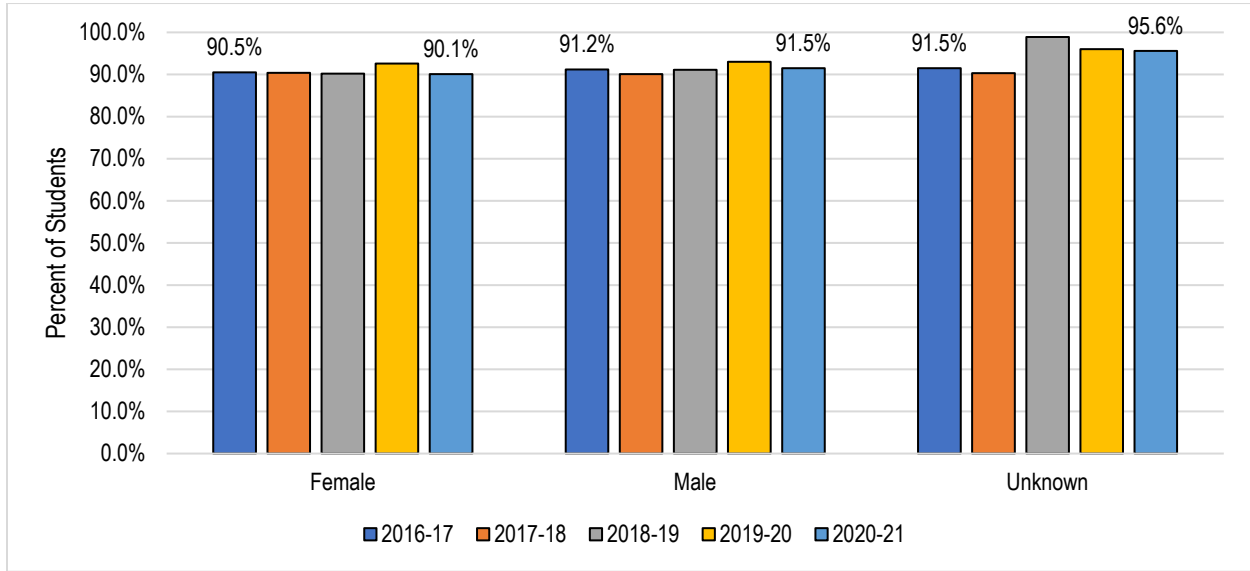


	2016-17	2017-18	2018-19	2019-20	2020-21	5 Year Change	5 Year Average
Female	88.3%	88.3%	88.1%	90.4%	87.7%	-0.6%	88.6%
Male	89.5%	88.5%	89.0%	91.0%	88.2%	-1.3%	89.3%
Unknown	92.9%	88.5%	92.8%	93.2%	93.7%	+0.8%	92.1%
Total Average	88.8%	88.4%	88.5%	90.7%	87.9%	-0.9%	88.9%

Source: CCCC MIS Referential Data Files.

On average, between 2016-17 and 2020-21, male students had a slightly higher retention rate than female students (89.3% & 88.6%, respectively). Over this period, the retention rates for female and male students decreased by 0.6% and 1.3%, respectively.

Course Retention Rates by Gender: Crafton Hills College

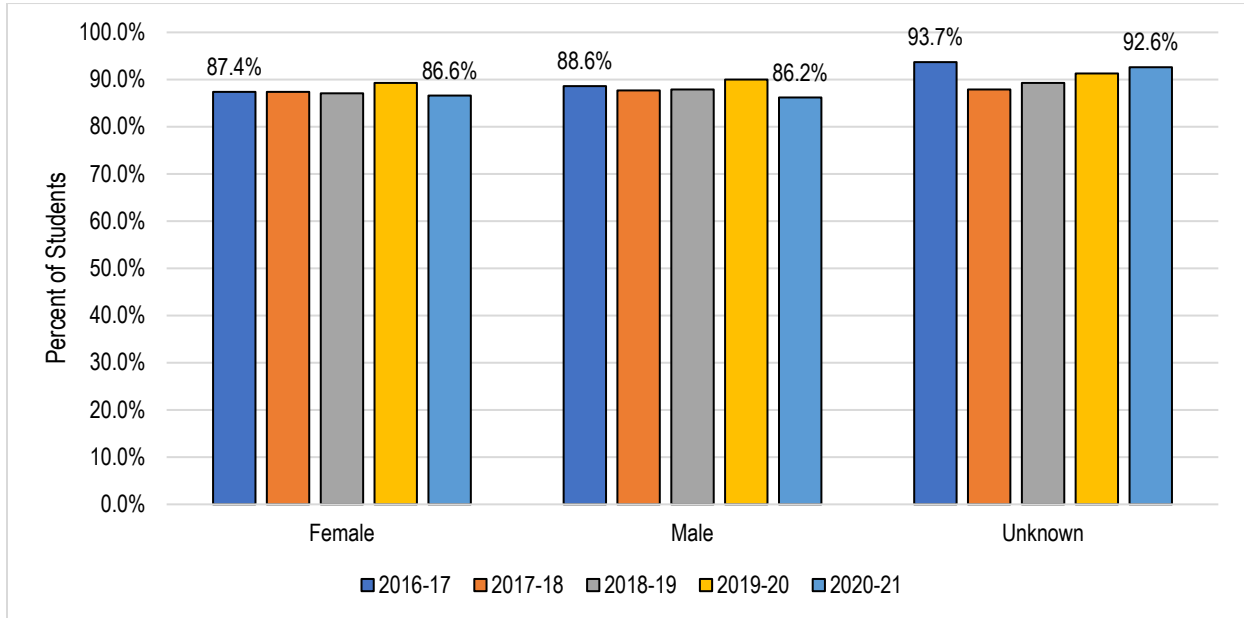


	2016-17	2017-18	2018-19	2019-20	2020-21	5 Year Change	5 Year Average
Female	90.5%	90.4%	90.2%	92.6%	90.1%	-0.4%	90.8%
Male	91.2%	90.1%	91.1%	93.0%	91.5%	+0.3%	91.4%
Unknown	91.5%	90.3%	98.9%	96.0%	95.6%	+4.1%	94.8%
Total Average	90.8%	90.3%	90.7%	92.8%	90.7%	-0.1%	91.1%

Source: CCCC MIS Referential Data Files.

On average, between 2016-17 and 2020-21, male students had a slightly higher retention rate than female students (91.4% & 90.8%, respectively). Over this period, the retention rate for male students increased by 0.3% while the retention rate for female students declined by 0.4%.

Course Retention Rates by Gender: San Bernardino Valley College

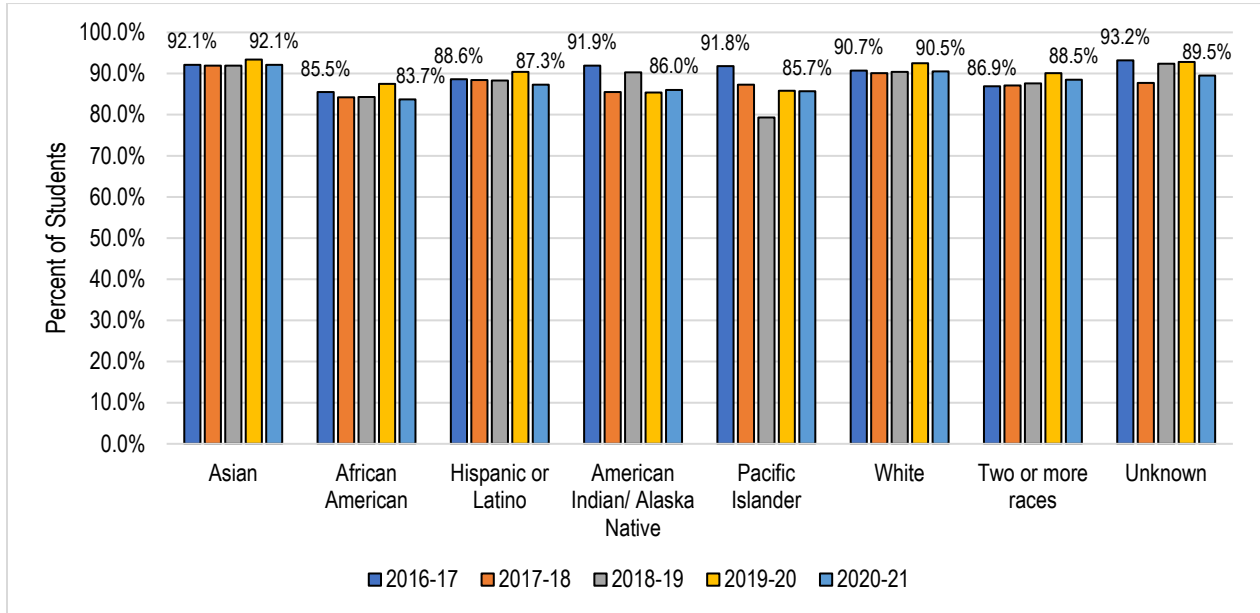


	2016-17	2017-18	2018-19	2019-20	2020-21	5 Year Change	5 Year Average
Female	87.4%	87.4%	87.1%	89.3%	86.6%	-0.8%	87.6%
Male	88.6%	87.7%	87.9%	90.0%	86.2%	-2.4%	88.1%
Unknown	93.7%	87.9%	89.3%	91.3%	92.6%	-1.1%	90.7%
Total Average	87.9%	87.5%	87.4%	89.6%	86.4%	-1.8%	87.8%

Source: CCCC MIS Referential Data Files.

Overall, between 2016-17 and 2020-21, male students had a slightly higher retention rate than female students (88.1% & 87.6%, respectively). Over this period, the retention rates for female and male students declined by 0.8% and 2.4%, respectively.

Course Retention Rates by Race/Ethnicity: SBCCD

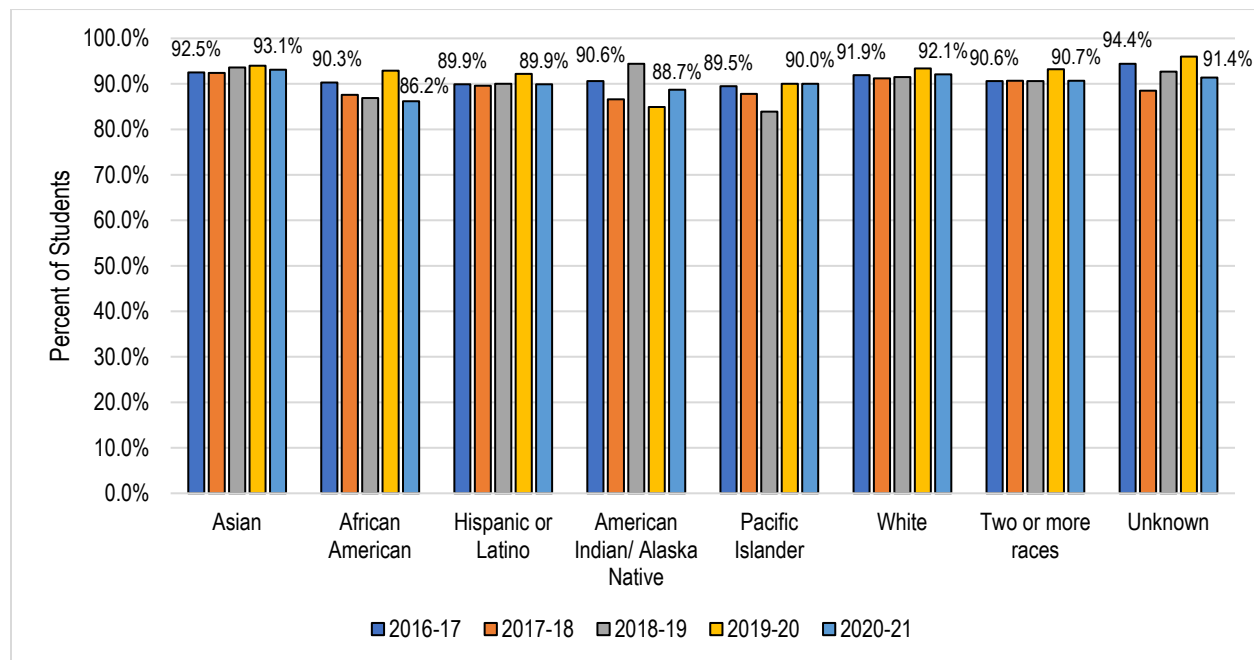


	2016-17	2017-18	2018-19	2019-20	2020-21	5 Year Change	5 Year Average
Asian	92.1%	91.9%	91.9%	93.4%	92.1%	0.0%	92.3%
African American	85.5%	84.2%	84.3%	87.5%	83.7%	-1.8%	85.1%
Hispanic or Latino	88.6%	88.4%	88.3%	90.4%	87.3%	-1.3%	88.6%
American Indian /Alaska Native	91.9%	85.5%	90.3%	85.4%	86.0%	-5.9%	88.2%
Pacific Islander	91.8%	87.3%	79.3%	85.8%	85.7%	-6.1%	86.1%
White	90.7%	90.1%	90.4%	92.5%	90.5%	-0.2%	90.8%
Two or more races	86.9%	87.1%	87.6%	90.1%	88.5%	+1.6%	88.0%
Unknown	93.2%	87.7%	92.4%	92.8%	89.5%	-3.7%	91.3%
Total Average	88.8%	88.4%	88.5%	90.7%	87.9%	-0.9%	88.9%

Source: CCCCO MIS Referential Data Files.

On average, between 2016-17 and 2020-21, Asian students had the highest retention rate (92.3%). The second highest were White students with 90.8%. The lowest were African American students with 85.5%. Over this period, the retention rates of Multiracial (+1.6%) students increased while the retention rates of Pacific Islander (-6.1%), American Indian /Alaska Native (-5.9%), African American (-1.8%), Hispanic (-1.3%), and White (-0.2%) students decreased.

Course Retention Rates by Race/Ethnicity: Crafton Hills College



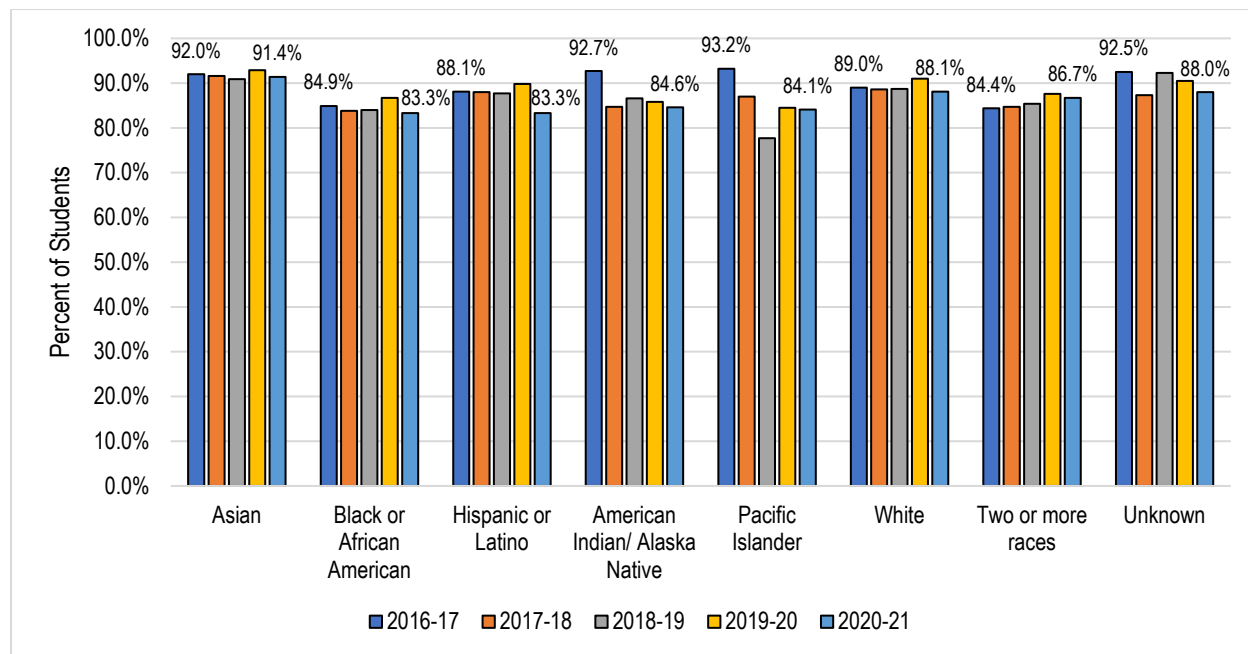
	2016-17	2017-18	2018-19	2019-20	2020-21	5 Year Change	5 Year Average
Asian	92.5%	92.4%	93.6%	94.0%	93.1%	+0.6%	93.1%
African American	90.3%	87.6%	86.9%	92.9%	86.2%	-4.1%	88.8%
Hispanic or Latino	89.9%	89.6%	90.0%	92.2%	89.9%	0.0%	90.3%
American Indian /Alaska Native	90.6%	86.6%	94.4%	84.9%	88.7%	-1.9%	89.2%
Pacific Islander	89.5%	87.8%	83.9%	90.0%	90.0%	+0.5%	88.1%
White	91.9%	91.2%	91.5%	93.4%	92.1%	+0.2%	92.0%
Two or more races	90.6%	90.7%	90.6%	93.2%	90.7%	+0.1%	91.2%
Unknown	94.4%	88.5%	92.7%	96.0%	91.4%	-3.0%	93.6%
Total Average	90.8%	90.3%	90.7%	92.8%	90.7%	-0.1%	91.1%

Source: CCCC MIS Referential Data Files.

On average, between 2016-17 and 2020-21, Asian students had the highest retention rate (93.1%). The second highest were White students with 92.0%. The lowest were Pacific Islander students with 88.1%.

Over this period, the retention rates of Asian (+0.6%), Pacific Islander (+0.5%), and White (+0.2%) students increased while the retention rates of African American (-4.1%) and American Indian /Alaska Native (-1.9%) students decreased.

Course Retention Rates by Race/Ethnicity: San Bernardino Valley College



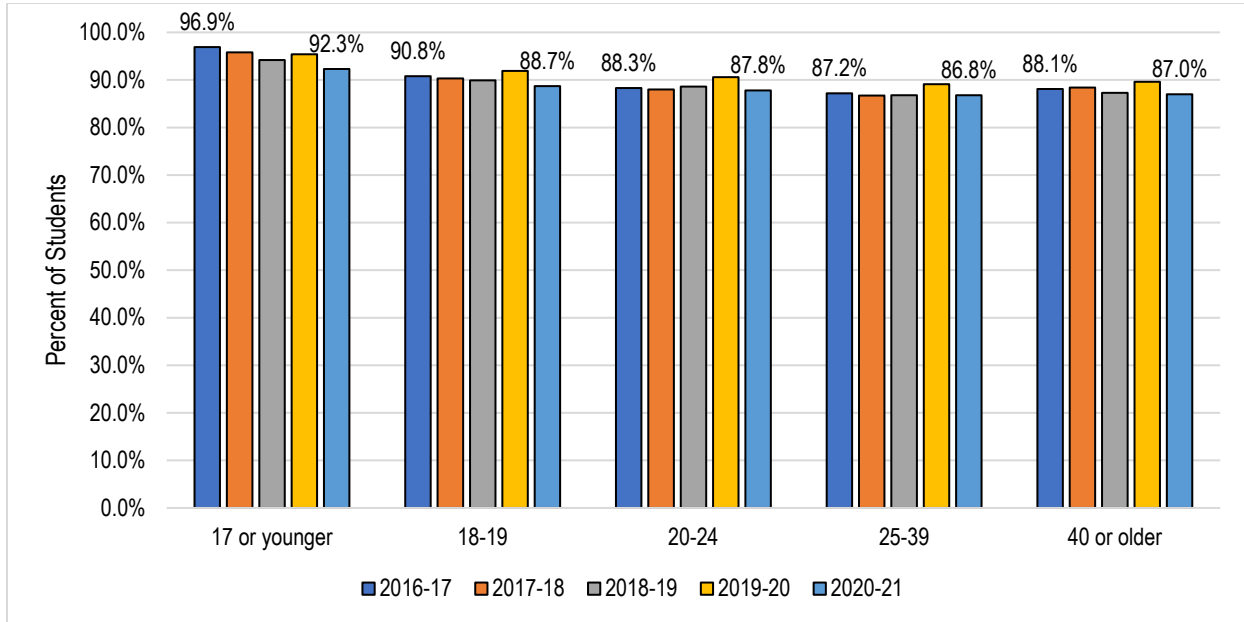
	2016-17	2017-18	2018-19	2019-20	2020-21	5 Year Change	5 Year Average
Asian	92.0%	91.6%	90.9%	92.9%	91.4%	-0.6%	91.8%
African American	84.9%	83.8%	84.0%	86.7%	83.3%	-1.6%	84.5%
Hispanic or Latino	88.1%	88.0%	87.7%	89.8%	83.3%	-4.8%	88.2%
American Indian /Alaska Native	92.7%	84.7%	86.6%	85.8%	84.6%	-8.1%	87.4%
Pacific Islander	93.2%	87.0%	77.7%	84.5%	84.1%	-9.1%	85.2%
White	89.0%	88.6%	88.7%	91.0%	88.1%	-0.9%	89.0%
Two or more races	84.4%	84.7%	85.4%	87.6%	86.7%	+2.3%	85.7%
Unknown	92.5%	87.3%	92.3%	90.5%	88.0%	-4.5%	89.9%
Total Average	87.9%	87.5%	87.4%	89.6%	86.4%	-1.8%	87.8%

Source: CCCC MIS Referential Data Files.

On average, between 2016-17 and 2020-21, Asian students had the highest retention rate (91.8%). The second highest were White students with 89.0%. The lowest were African American students with 84.5%.

Over this period, the retention rates of Multiracial (+2.3%) students increased while the retention rates of Pacific Islander (-9.1%), American Indian /Alaska Native (-8.1%), Hispanic (-4.8%), White (+1.7%), African American (-1.6%), White (-0.9%), and Asian (-0.6%) students decreased.

Course Retention Rates by Age: SBCCD

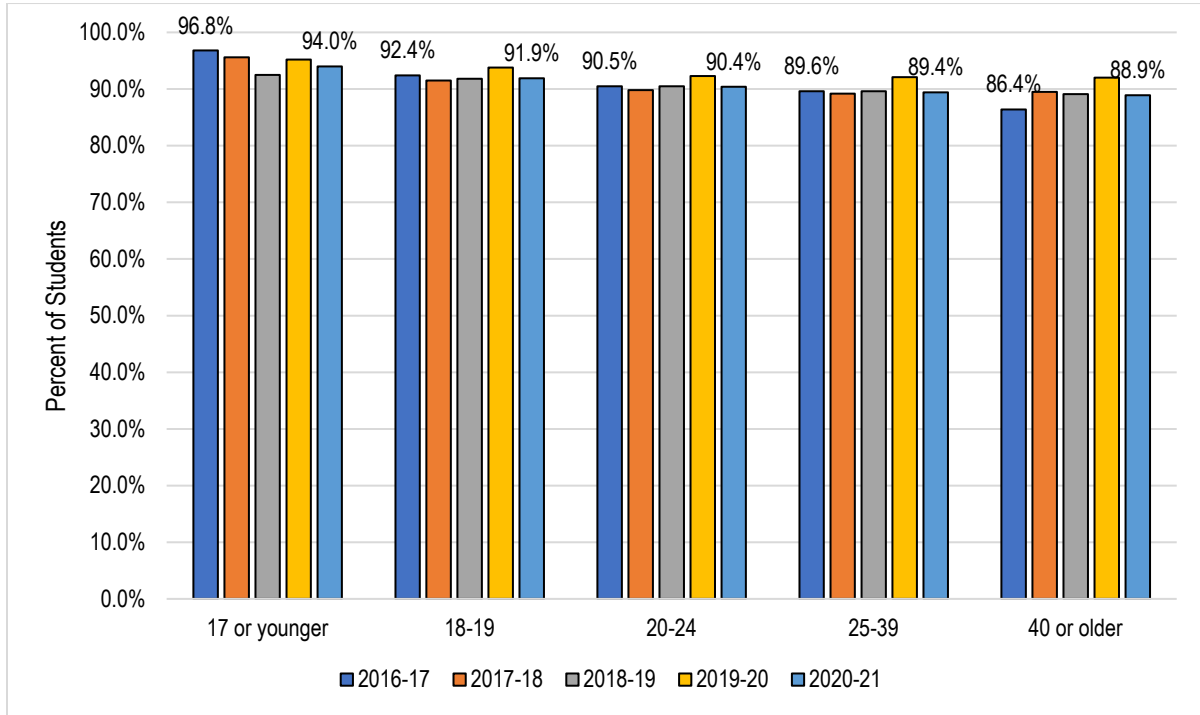


	2016-17	2017-18	2018-19	2019-20	2020-21	5 Year Change	5 Year Average
17 or younger	96.9%	95.8%	94.2%	95.4%	92.3%	-4.6%	94.8%
18-19	90.8%	90.3%	89.9%	91.9%	88.7%	-2.1%	90.4%
20-24	88.3%	88.0%	88.6%	90.6%	87.8%	-0.5%	88.7%
25-39	87.2%	86.7%	86.8%	89.1%	86.8%	-0.4%	87.3%
40 or older	88.1%	88.4%	87.3%	89.6%	87.0%	-1.1%	88.1%
Total Average	88.8%	88.4%	88.5%	90.7%	87.9%	-0.9%	88.9%

Source: CCCC MIS Referential Data Files.

On average, between 2016-17 and 2020-21, students under 17 years old had the highest retention rate (94.8%), while the average retention rates of students 25-39 years old had the lowest retention rate (87.3%).

Course Retention Rates by Age: Crafton Hills College

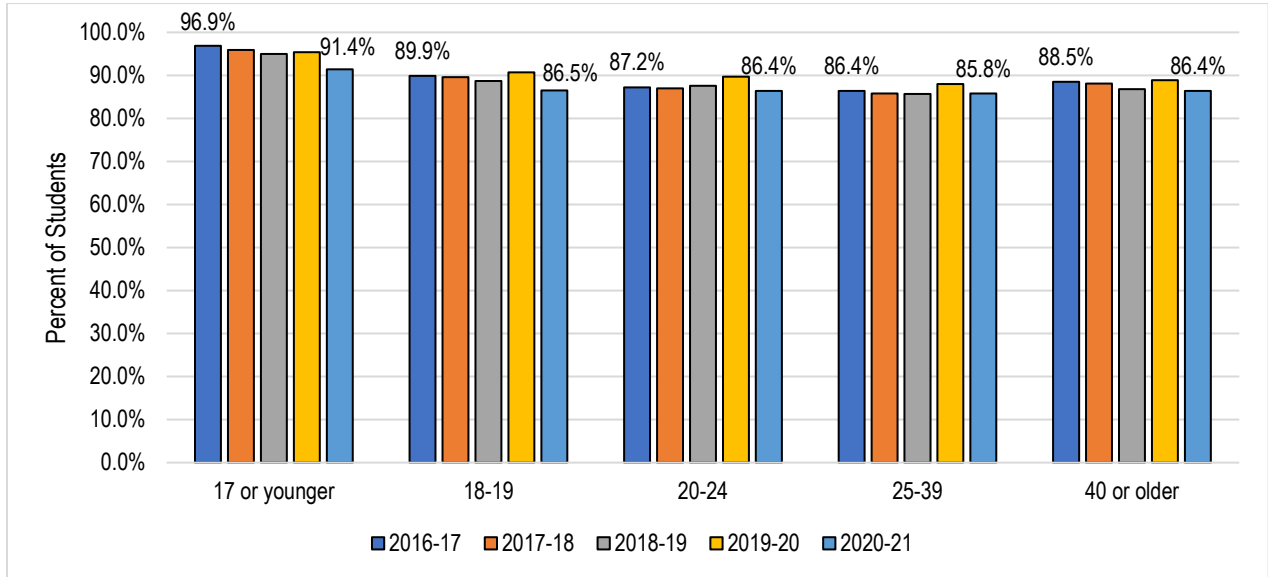


	2016-17	2017-18	2018-19	2019-20	2020-21	5 Year Change	5 Year Average
17 or younger	96.8%	95.6%	92.5%	95.2%	94.0%	-2.8%	94.7%
18-19	92.4%	91.5%	91.8%	93.8%	91.9%	-0.5%	92.3%
20-24	90.5%	89.8%	90.5%	92.3%	90.4%	-0.1%	90.7%
25-39	89.6%	89.2%	89.6%	92.1%	89.4%	-0.2%	90.0%
40 or older	86.4%	89.5%	89.1%	92.0%	88.9%	+2.5%	89.3%
Total Average	90.8%	90.3%	90.7%	92.8%	90.7%	-0.1%	91.1%

Source: CCCC MIS Referential Data Files.

On average, between 2016-17 and 2020-21, students under 17 years old had the highest retention rate (94.7%), while students over 40 years old had the lowest average retention rate (89.3%).

Course Retention Rates by Age: San Bernardino Valley College

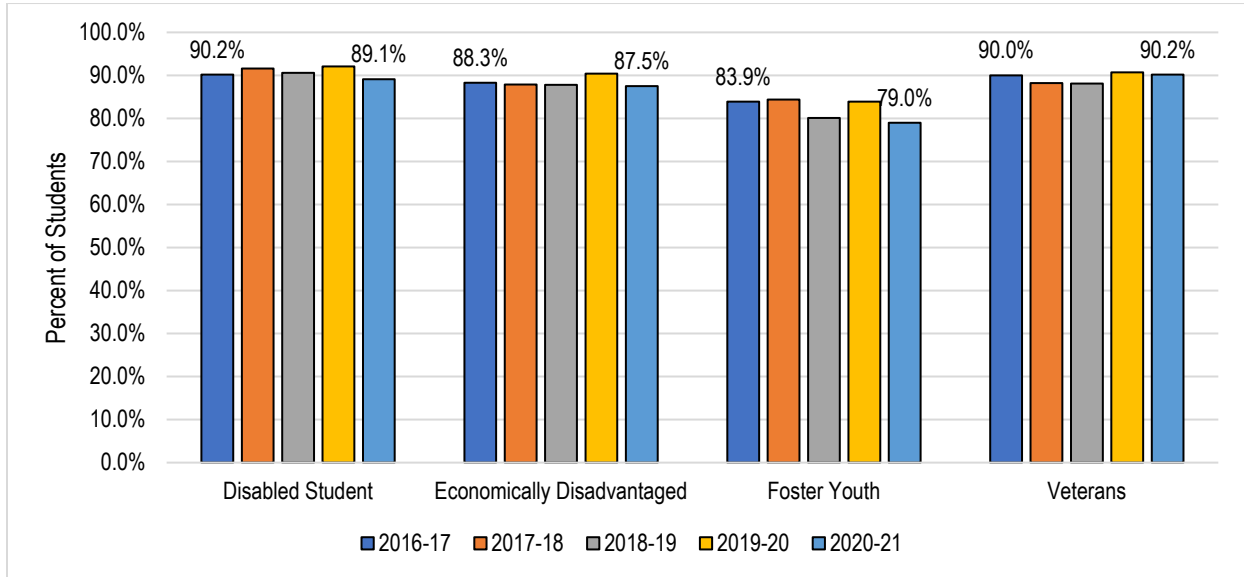


	2016-17	2017-18	2018-19	2019-20	2020-21	5 Year Change	5 Year Average
17 or younger	96.9%	95.9%	95.0%	95.4%	91.4%	-5.5%	94.9%
18-19	89.9%	89.6%	88.7%	90.7%	86.5%	-3.4%	89.1%
20-24	87.2%	87.0%	87.6%	89.7%	86.4%	-0.8%	87.6%
25-39	86.4%	85.8%	85.7%	88.0%	85.8%	-0.6%	86.3%
40 or older	88.5%	88.1%	86.8%	88.9%	86.4%	-2.1%	87.8%
Total Average	87.9%	87.5%	87.4%	89.6%	86.4%	-1.8%	87.8%

Source: CCCC MIS Referential Data Files.

On average, between 2016-17 and 2020-21, students under 17 years old had the highest retention rate (94.9%), while students 25-39 years old had the lowest retention rate (86.3%).

Course Retention Rates by Special Population: SBCCD



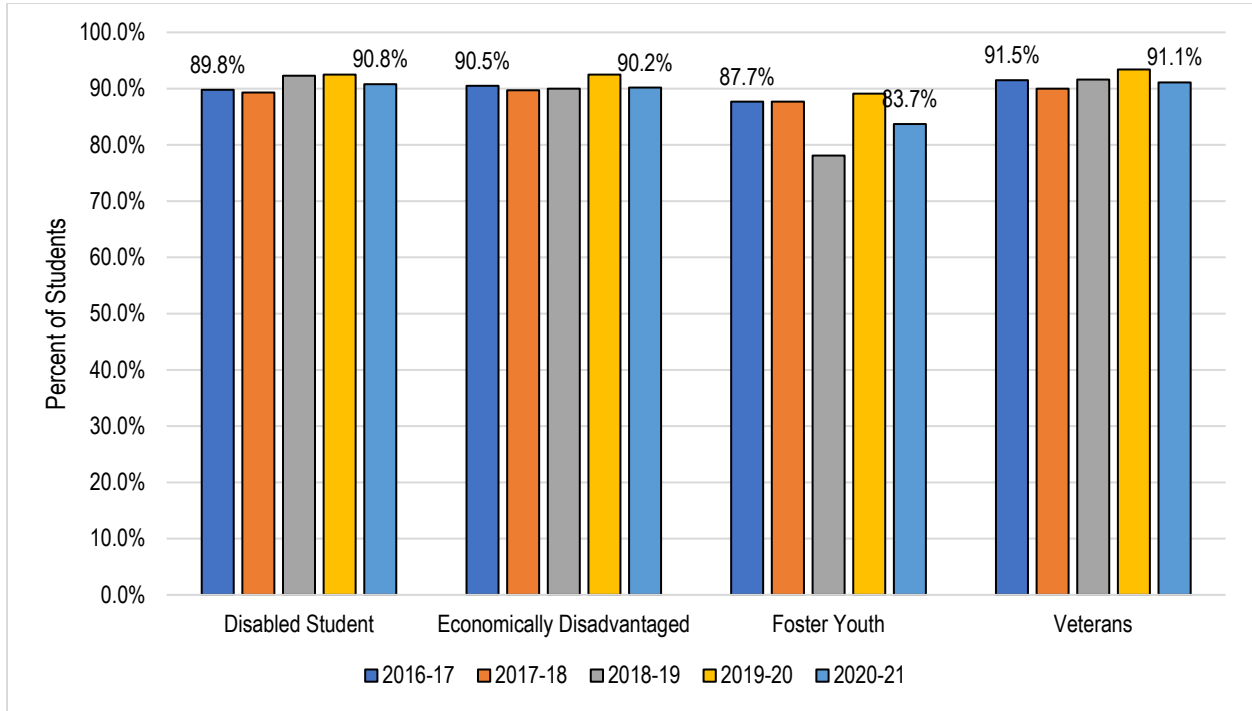
	2016-17	2017-18	2018-19	2019-20	2020-21	5 Year Change	5 Year Average
Disabled Student	90.2%	91.6%	90.6%	92.1%	89.1%	-1.1%	90.9%
Economically Disadvantaged*	88.3%	87.9%	87.8%	90.4%	87.5%	-0.8%	88.4%
Foster Youth	83.9%	84.4%	80.1%	83.9%	79.0%	-4.9%	82.3%
Veterans	90.0%	88.2%	88.1%	90.7%	90.2%	+0.2%	89.4%
Total Average	88.8%	88.4%	88.5%	90.7%	87.9%	-0.9%	88.9%

Source: CCCC MIS Referential Data Files.

* Note: Economical Disadvantage Status for Perkins was defined in the Student Success Metrics: Metric Definition Directory https://www.calpassplus.org/Launchboard/Student-Success-Metrics-DED#_Toc2682967

On average, between 2016-17 and 2020-21, students with disabilities had the highest retention rate (90.9%). The average retention rates of foster youth students (82.3%) and economically disadvantaged students (88.4%) were lower than the average retention rate for SBCCD (88.9%). Over this period, the retention rate of the foster youth students declined by 4.9%.

Course Retention Rates by Special Population: Crafton Hills College



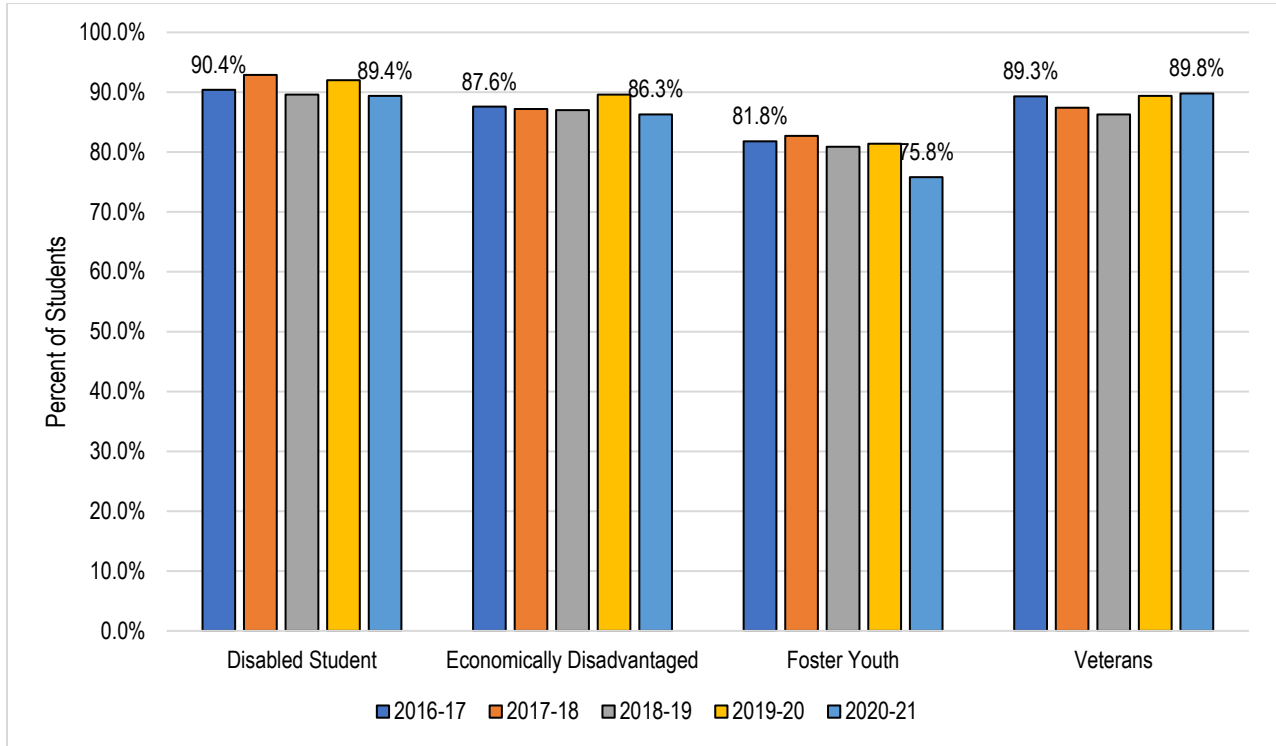
	2016-17	2017-18	2018-19	2019-20	2020-21	5 Year Change	5 Year Average
Disabled Student	89.8%	89.3%	92.3%	92.5%	90.8%	+1.0%	91.0%
Economically Disadvantaged*	90.5%	89.7%	90.0%	92.5%	90.2%	-0.3%	90.6%
Foster Youth	87.7%	87.7%	78.1%	89.1%	83.7%	-4.0%	85.6%
Veterans	91.5%	90.0%	91.6%	93.4%	91.1%	-0.4%	91.5%
Total Average	90.8%	90.3%	90.7%	92.8%	90.7%	-0.1%	91.1%

Source: CCCC MIS Referential Data Files.

* Note: Economical Disadvantage Status for Perkins was defined in the Student Success Metrics: Metric Definition Directory https://www.calpassplus.org/Launchboard/Student-Success-Metrics-DED#_Toc2682967

On average, between 2016-17 and 2020-21, veteran students had the highest retention rate (91.5%). The average retention rates of foster youth students (85.6%), economically disadvantaged students (90.6%), and students with disabilities (91.0%) were lower than the average retention rate for Crafton Hills College (91.1%). Over this period, the retention rate of the foster youth students declined by 4.0%.

Course Retention Rates by Special Population: San Bernardino Valley College



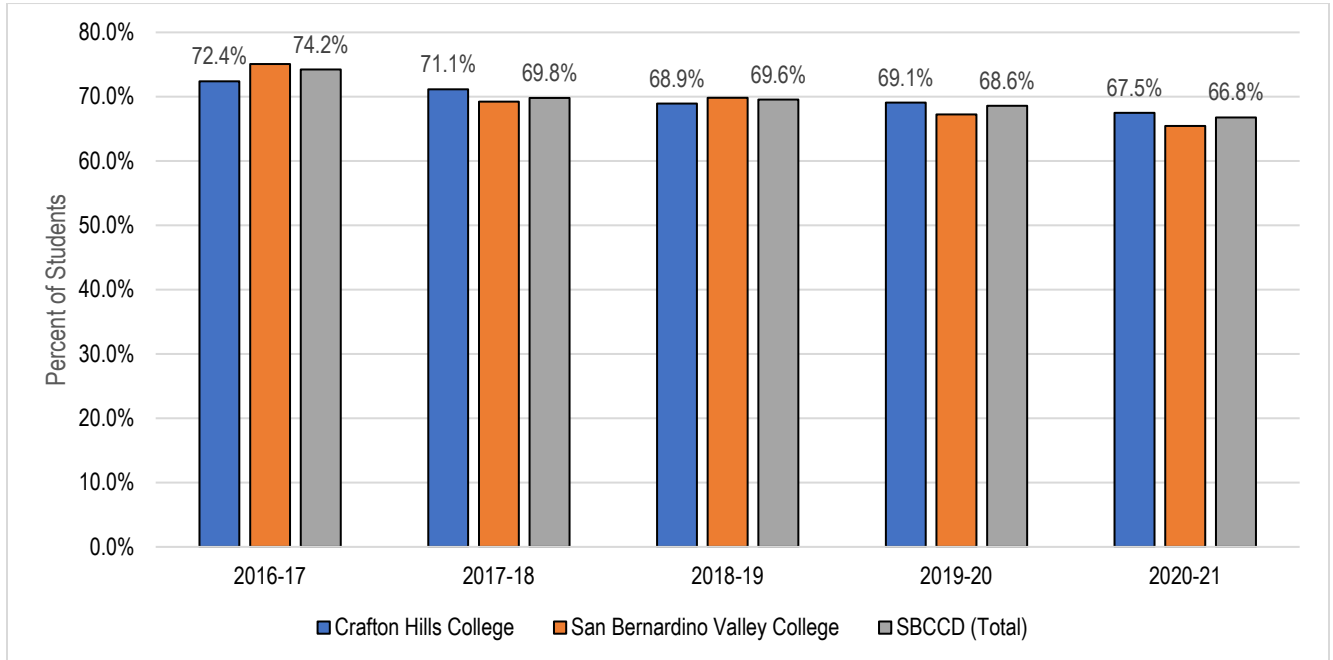
	2016-17	2017-18	2018-19	2019-20	2020-21	5 Year Change	5 Year Average
Disabled Student	90.4%	92.9%	89.6%	92.0%	89.4%	-1.0%	90.8%
Economically Disadvantaged*	87.6%	87.2%	87.0%	89.6%	86.3%	-1.3%	87.6%
Foster Youth	81.8%	82.7%	80.9%	81.4%	75.8%	-6.0%	80.6%
Veterans	89.3%	87.4%	86.3%	89.4%	89.8%	+0.5%	88.3%
Total Average	87.9%	87.5%	87.4%	89.6%	86.4%	-1.8%	87.8%

Source: CCCC MIS Referential Data Files.

* Note: Economical Disadvantage Status for Perkins was defined in the Student Success Metrics: Metric Definition Directory https://www.calpassplus.org/Launchboard/Student-Success-Metrics-DED#_Toc2682967

On average, between 2016-17 and 2020-21, students with disabilities had the highest average retention rate (90.8%). The average retention rates of foster youth students (80.4%) and economically disadvantaged students (87.6%) were lower than the average retention rate for San Bernardino Valley College (87.8%). Over this period, the retention rate of the foster youth students declined by 6.0%.

Persistence Rate: Retained from Fall to Spring



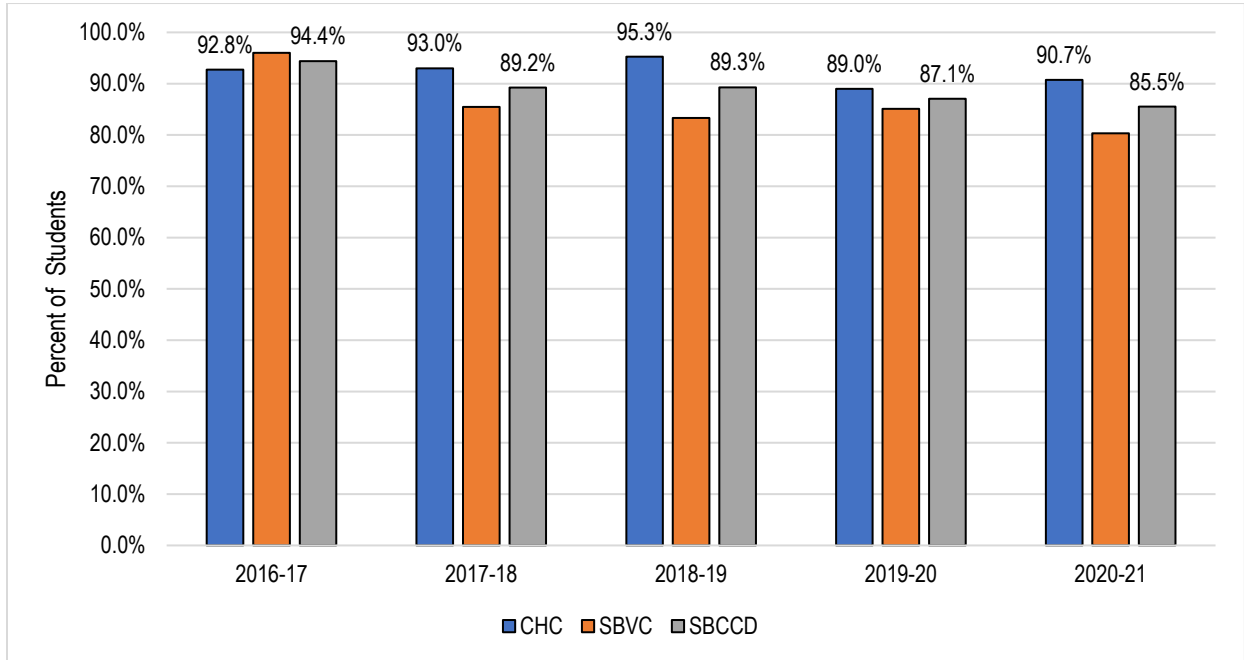
	2016-17	2017-18	2018-19	2019-20	2020-21	5 Year Change
Crafton Hills College	72.4%	71.1%	68.9%	69.1%	67.5%	-4.9%
San Bernardino Valley College	75.1%	69.2%	69.8%	67.2%	65.4%	-9.6%
SBCCD (Total)	74.2%	69.8%	69.6%	68.6%	66.8%	-7.4%

Source: SBCCD KPI Dashboard, KPI I.B

Definition: Number of students earning any grade in the initial Fall semester divided by the number of students who earned any grade in the subsequent Spring semester, excluding students who earned a degree or certificate and/or transferred to a four-year college or university.

The persistence rate of students from both colleges in the District decreased by 7.4 percentage points, from 74.2% in 2016-17 to 66.8% in 2020-21.

Licensure and Certification Pass Rates



	2016-17	2017-18	2018-19	2019-20	2020-21
Crafton Hills College	92.8%	93.0%	95.3%	89.0%	90.7%
San Bernardino Valley College	96.0%	85.5%	83.3%	85.1%	80.3%
SBCCD (Total)	94.4%	89.2%	89.3%	87.1%	85.5%

Source: SBCCD KPI Dashboard, KPI II.5

Between 2016-17 and 2020-21, the average licensure/certification pass rate is 89.1% during this five-year period, with a high of 94.4% in 2016-17 and a low of 85.5% in 2020-21.