



2023 Fact Book Student Outcomes

Prepared by the SBCCD Office of Research,
Planning and Institutional Effectiveness

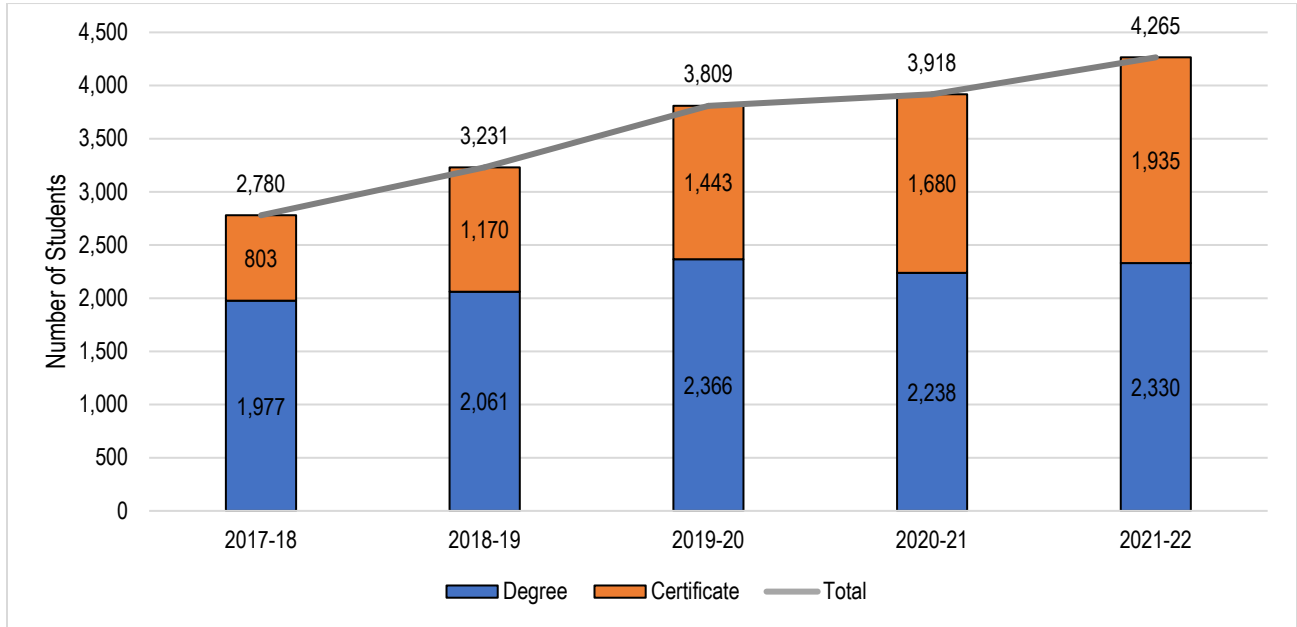
Table of Contents

Awards and Certificates: SBCCD	3
Awards and Certificates: Crafton Hills College	4
Awards and Certificates: San Bernardino Valley College	5
Awards and Certificates By Program, 2021-22: SBCCD	6
Awards and Certificates By Program, 2021-22: Crafton Hills College	7
Awards and Certificates By Program, 2021-22: San Bernardino Valley College	8
Annual Transfer Volume*, 2017-2018 through 2021-2022	9
Transfer Volume (CSU, UC, In-State, and Out-of-State): SBCCD	10
Transfer Volume (CSU, UC, In-State, and Out-of-State): Crafton Hills College.....	11
Transfer Volume (CSU, UC, In-State, and Out-of-State): San Bernardino Valley College.....	12
Top Ten Transfers to a Four-Year University: 2021-22	13
Course Success Rates	14
Course Success Rates by Gender: SBCCD	15
Course Success Rates by Gender: Crafton Hills College	16
Course Success Rates by Gender: San Bernardino Valley College	17
Course Success Rates by Race/Ethnicity: SBCCD	18
Course Success Rates by Race/Ethnicity: Crafton Hills College	19
Course Success Rates by Race/Ethnicity: San Bernardino Valley College	20
Course Success Rates by Age: SBCCD.....	21
Course Success Rates by Age: Crafton Hills College.....	22
Course Success Rates by Age: San Bernardino Valley College.....	23
Course Success Rates by Special Population: SBCCD	24
Course Success Rates by Special Population: Crafton Hills College	25
Course Success Rates by Special Population: San Bernardino Valley College	26
Course Retention Rates	27
Course Retention Rates by Gender: SBCCD	28
Course Retention Rates by Gender: Crafton Hills College	29
Course Retention Rates by Gender: San Bernardino Valley College	30
Course Retention Rates by Race/Ethnicity: SBCCD	31
Course Retention Rates by Race/Ethnicity: Crafton Hills College	32
Course Retention Rates by Race/Ethnicity: San Bernardino Valley College	33
Course Retention Rates by Age: SBCCD.....	34
Course Retention Rates by Age: Crafton Hills College.....	35

2023 Fact Book – Student Outcomes

Course Retention Rates by Age: San Bernardino Valley College..... 36
Course Retention Rates by Special Population: SBCCD..... 37
Course Retention Rates by Special Population: Crafton Hills College..... 38
Course Retention Rates by Special Population: San Bernardino Valley College..... 39
Persistence Rate: Retained from Fall to Spring..... 40
Licensure and Certification Pass Rates 41

Awards and Certificates: SBCCD

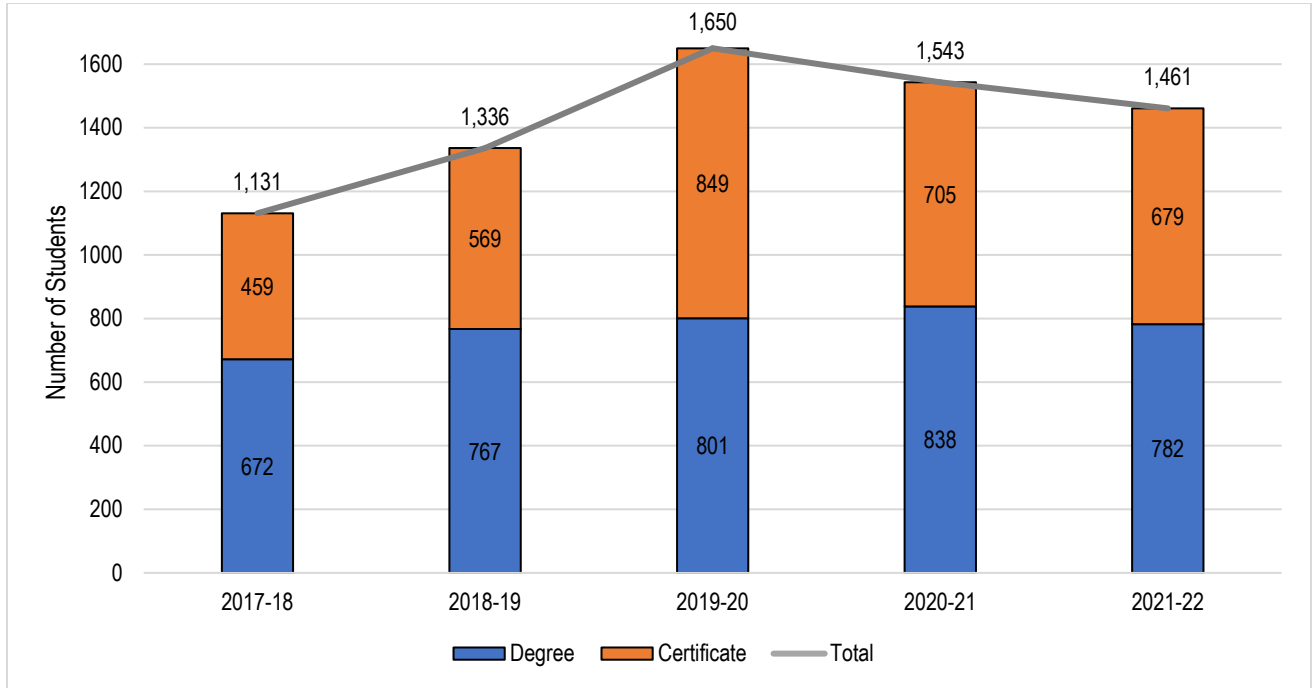


Total Headcount	2017-18	2018-19	2019-20	2020-21	2021-22	5 Year Change	5 Year Average
Degree	1,977	2,061	2,366	2,238	2,330	+18%	2,194
AA-T/AS-T	611	654	804	839	806	+32%	743
AA/AS Degree	1,366	1,407	1,562	1,399	1,524	+12%	1,452
Certificate	803	1,170	1,443	1,680	1,935	+141%	1,406
Certificate 60 or more units	11	14	12	4	5	-55%	9
Certificate 30 to 59 units	458	767	944	817	817	+79%	761
Certificate 29 or fewer units	334	388	487	859	1,112	+233%	636
Noncredit Award			1				
Total	2,780	3,231	3,809	3,918	4,265	+53%	3,600

Source: CCCC Data Mart: https://datamart.cccc.edu/Outcomes/Program_Awards.aspx

On average, between 2017-18 and 2021-22, 60.9% of total awards conferred were associate degrees and 39.1% were certificates. The number of associate degrees conferred in the last five academic years has increased 8%, from 1,977 in 2017-18 to 2,330 in 2021-22, and the number of certificates conferred has increased 141%, from 803 in 2017-18 to 1,935 in 2021-22.

Awards and Certificates: Crafton Hills College

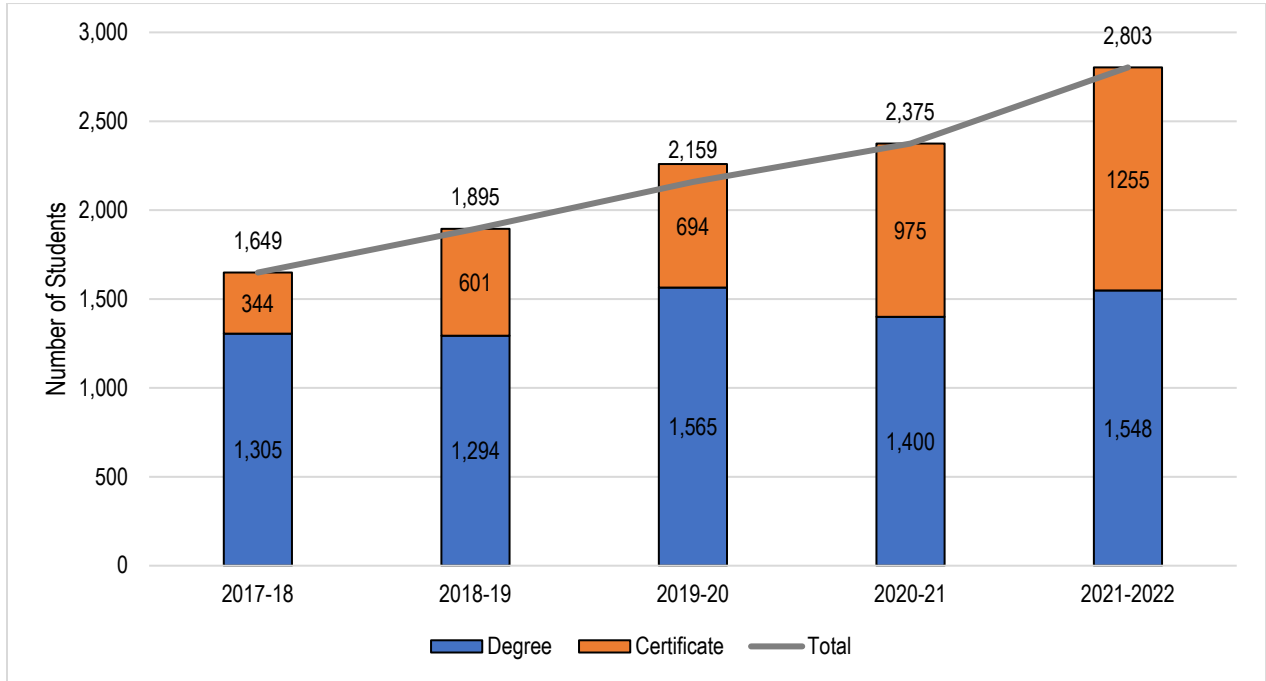


Total Headcount	2017-18	2018-19	2019-20	2020-21	2021-22	5 Year Change	5 Year Average
Degree	672	767	801	838	782	+16%	772
AA-T/AS-T	245	295	326	346	347	+42%	312
AA/AS Degree	427	472	475	492	435	+2%	460
Certificate	459	569	849	705	679	+48%	652
Certificate 60 or more units	8	8	7	0	0	-100%	5
Certificate 30 to 59 units	235	281	484	466	463	+97%	386
Certificate 29 or fewer units	216	280	358	239	216	0%	262
Total	1,131	1,336	1,650	1,543	1,461	+29%	1,424

Source: CCCC Data Mart: https://datamart.cccc.edu/Outcomes/Program_Awards.aspx

On average, between 2017-18 and 2021-22, 54.2% of total awards conferred at Crafton Hills College were associate degrees and 45.8% were certificates. Over this period, the number of associate degrees conferred has increased 16%, from 672 in 2017-18 to 782 in 2021-22, and the number of certificates conferred has increased 48%, from 459 in 2017-18 to 679 in 2021-22.

Awards and Certificates: San Bernardino Valley College

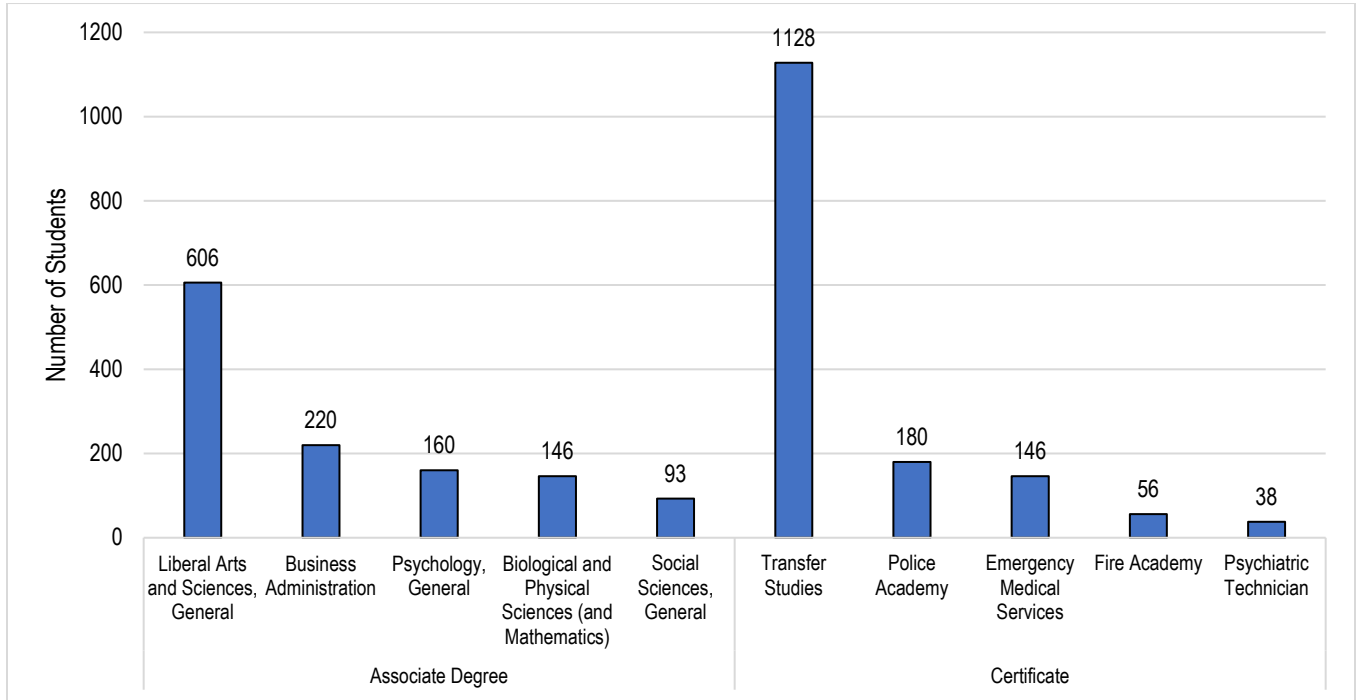


Total Headcount	2017-18	2018-19	2019-20	2020-21	2021-22	5 Year Change	5 Year Average
Degree	1,305	1,294	1,565	1,400	1,548	+19%	1,422
AA-T/AS-T	366	359	478	493	459	+25%	431
AA/AS Degree	939	935	1,087	907	1,089	+16%	991
Certificate	344	601	594	975	1,255	+265%	754
Certificate 60 or more units	3	6	5	4	4	+33%	4
Certificate 30 to 59 units	223	486	460	351	355	+59%	375
Certificate 29 or fewer units	118	108	129	620	896	+659%	374
Noncredit Award			1				
Total	1,649	1,895	2,159	2,375	2,803	70%	2,176

Source: CCCCO Data Mart: https://datamart.ccco.edu/Outcomes/Program_Awards.aspx

On average, between 2017-18 and 2021-22, 65.4% of total awards conferred at SBVC were associate degrees and 34.6% were certificates. Over this period, the number of associate degrees conferred has increased 19%, from 1,305 in 2017-18 to 1,548 in 2021-22, and the number of certificates conferred has increased 265%, from 344 in 2017-18 to 1,255 in 2021-22.

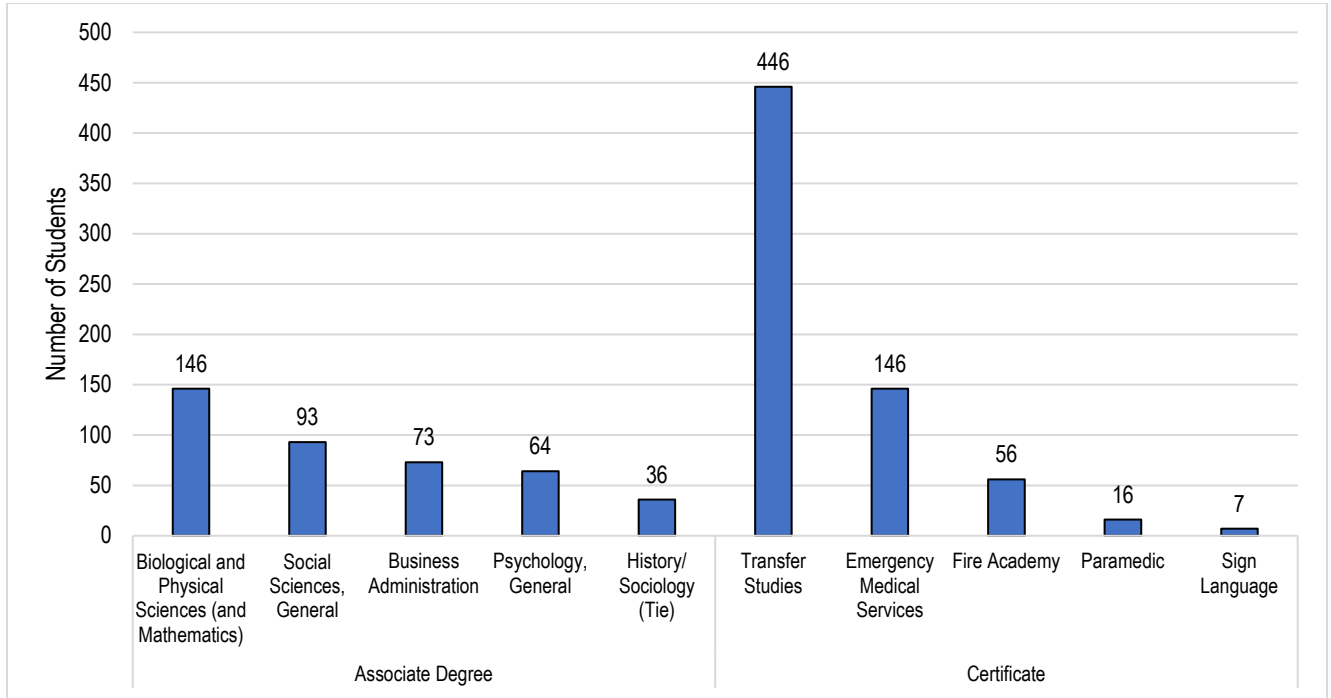
Awards and Certificates By Program, 2021-22: SBCCD



Rank	Associate Degree Top Program	Count (N=2,330)	Percent
1	Liberal Arts and Sciences, General	606	26.0%
2	Business Administration	220	9.4%
3	Psychology, General	160	6.9%
4	Biological and Physical Sciences (and Mathematics)	146	6.3%
5	Social Sciences, General	93	4.0%
6	Registered Nursing	86	3.7%
7	Sociology-	77	3.3%
8	Administration of Justice	71	3.0%
9	Accounting	47	2.0%
10	Child Development/Early Care and Education	41	1.8%
11	Mathematics, General	40	1.7%
12	History-220500	38	1.6%
13	Preschool Age Children	36	1.5%
14	Biology, General	35	1.5%
14	Psychiatric Technician	35	1.5%

Rank	Certificate Top Program	Count (N=1,935)	Percent
1	Transfer Studies	1128	58.3%
2	Police Academy	180	9.3%
3	Emergency Medical Services	146	7.5%
4	Fire Academy	56	2.9%
5	Psychiatric Technician	38	2.0%
6	Accounting	30	1.6%
6	Preschool Age Children	30	1.6%
8	Diesel Technology	29	1.5%
9	Electrical Systems and Power Transmission	25	1.3%
10	Pharmacy Technology	21	1.1%
11	Alcohol and Controlled Substances	19	1.0%
12	Paramedic	16	0.8%
13	Architecture and Architectural Technology	15	0.8%
14	Automotive Collision Repair	14	0.7%
15	Health Information Coding	10	0.5%

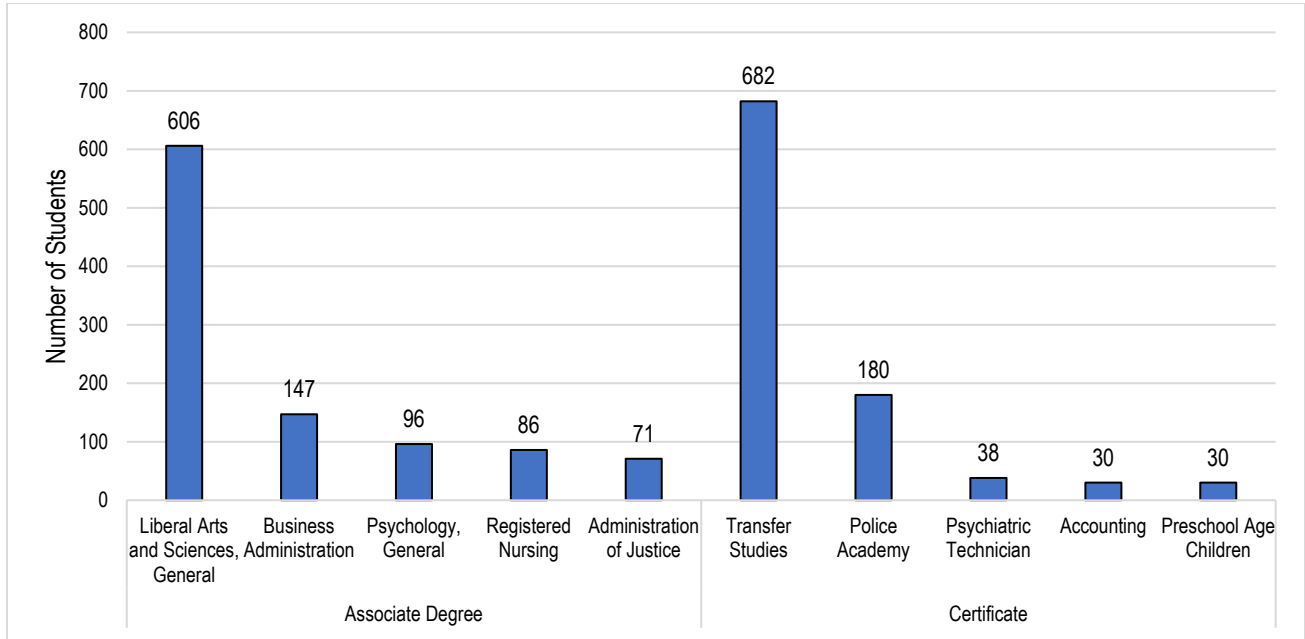
Awards and Certificates By Program, 2021-22: Crafton Hills College



Rank	Associate Degree Top Program	Count (N=782)	Percent
1	Biological and Physical Sciences (and Mathematics)	146	18.7%
2	Social Sciences, General	93	11.9%
3	Business Administration	73	9.3%
4	Psychology, General	64	8.2%
5	History	36	4.6%
5	Sociology	36	4.6%
7	Mathematics, General	26	3.3%
8	Biology, General	24	3.1%
8	Fire Technology	24	3.1%
10	Speech Communication	19	2.4%
11	Chemistry, General	18	2.3%
11	Kinesiology	18	2.3%
13	Physics, General	17	2.2%
14	Respiratory Care/Therapy	17	2.2%
15	Computer Science (Transfer)	15	1.9%

Rank	Certificate Top Program	Count (N=679)	Percent
1	Transfer Studies	446	65.7%
2	Emergency Medical Services	146	21.5%
3	Fire Academy	56	8.2%
4	Paramedic	16	2.4%
5	Sign Language	7	1.0%
6	Music-	4	0.6%
6	Child Development/Early Care and Education	3	0.4%
8	Computer Information System	1	0.1%
8	Radiologic Technology	1	0.1%

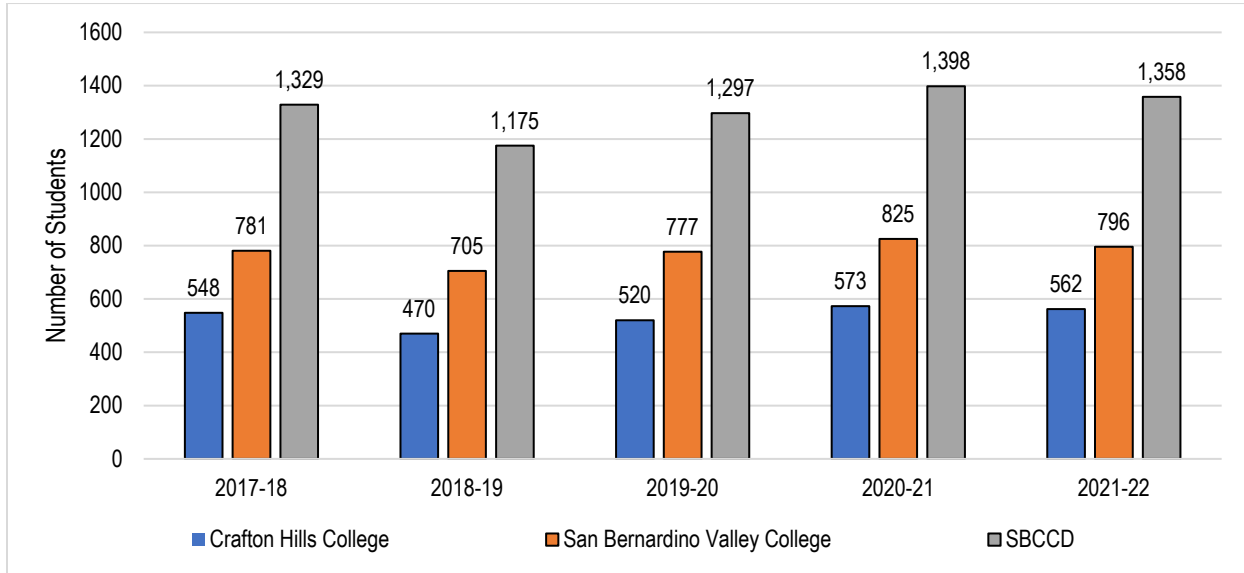
Awards and Certificates By Program, 2021-22: San Bernardino Valley College



Rank	Associate Degree Top Program	Count (N=1,548)	Percent
1	Liberal Arts and Sciences, General	606	39.1%
2	Business Administration	147	9.5%
3	Psychology, General	96	6.2%
4	Registered Nursing	86	5.6%
5	Administration of Justice	71	4.6%
6	Accounting	47	3.0%
7	Sociology	41	2.6%
8	Preschool Age Children	36	2.3%
9	Psychiatric Technician	35	2.3%
10	Child Development/Early Care and Education	33	2.1%
11	Human Services	30	1.9%
12	Water and Wastewater Technology	23	1.5%
13	Art	20	1.3%
14	Pharmacy Technology	18	1.2%
15	Graphic Art and Design	16	1.0%

Rank	Certificate Top Program	Count (N=1,255)	Percent
1	Transfer Studies	682	54.3%
2	Police Academy	180	14.3%
3	Psychiatric Technician	38	3.0%
4	Accounting	30	2.4%
4	Preschool Age Children	30	2.4%
6	Diesel Technology	29	2.3%
7	Electrical Systems and Power Transmission	25	2.0%
8	Pharmacy Technology	21	1.7%
9	Alcohol and Controlled Substances	19	1.5%
10	Architecture and Architectural Technology	15	1.2%
11	Automotive Collision Repair	14	1.1%
12	Health Information Coding	10	0.8%
12	Water and Wastewater Technology	10	0.8%
13	Culinary Arts	9	0.7%
13	Electronics and Electric Technology	9	0.7%
13	Environmental Control Technology	9	0.7%
13	Geographic Information Systems	9	0.7%
13	Human Services	9	0.7%

Annual Transfer Volume*, 2017-2018 through 2021-2022



	2017-18	2018-19	2019-20	2020-21	2021-22	5 Year Change	5 Year Average
Crafton Hills College	548	470	520	573	562	+2.6%	535
San Bernardino Valley College	781	705	777	825	796	+1.9%	777
SBCCD (Total)	1,329	1,175	1,297	1,398	1,358	+2.2%	1,311

Note: * Total number of Students Transferring to UC, CSU, out-of-state, and state private institutions

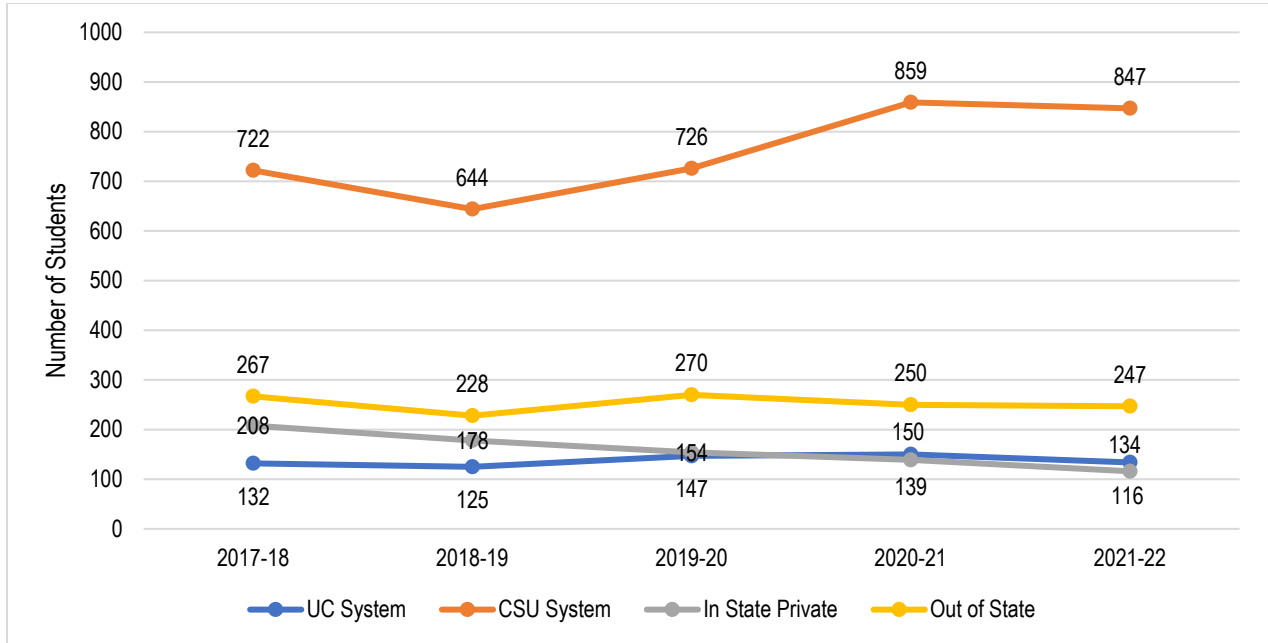
Sources: 1. Datamart Transfer Volume to In-State Private (ISP) and Out-of-State (OOS)

2. Volume of transfers to UC: <https://www.universityofcalifornia.edu/infocenter/admissions-source-school>

3. Volume of transfers to CSU <https://www.calstate.edu/data-center/institutional-research-analyses/Pages/enrollment.aspx>

Between 2017-18 and 2021-22, the annual transfer volume for SBCCD increased by 2.2%, from 1,329 in 2017-18 to 1,358 in 2021-22, with a five-year average of 1,311.

Transfer Volume (CSU, UC, In-State, and Out-of-State): SBCCD



	2017-18		2018-19		2019-20		2020-21		2021-22		5 Year Change	5 Year Average
UC System	132	10%	125	11%	147	11%	150	11%	148	11%	+12.1%	140
CSU System	722	55%	644	55%	726	56%	859	61%	847	62%	+17.3%	760
In State Private	208	16%	178	15%	154	12%	139	10%	116	9%	-44.2%	159
Out of State	267	20%	228	19%	270	21%	250	18%	247	18%	-7.5%	252
Total	1,329	100%	1,175	100%	1,297	100%	1,398	100%	1,358	100%	+2.2%	1,311

Sources: 1. Datamart Transfer Volume to In-State Private (ISP) and Out-of-State (OOS)

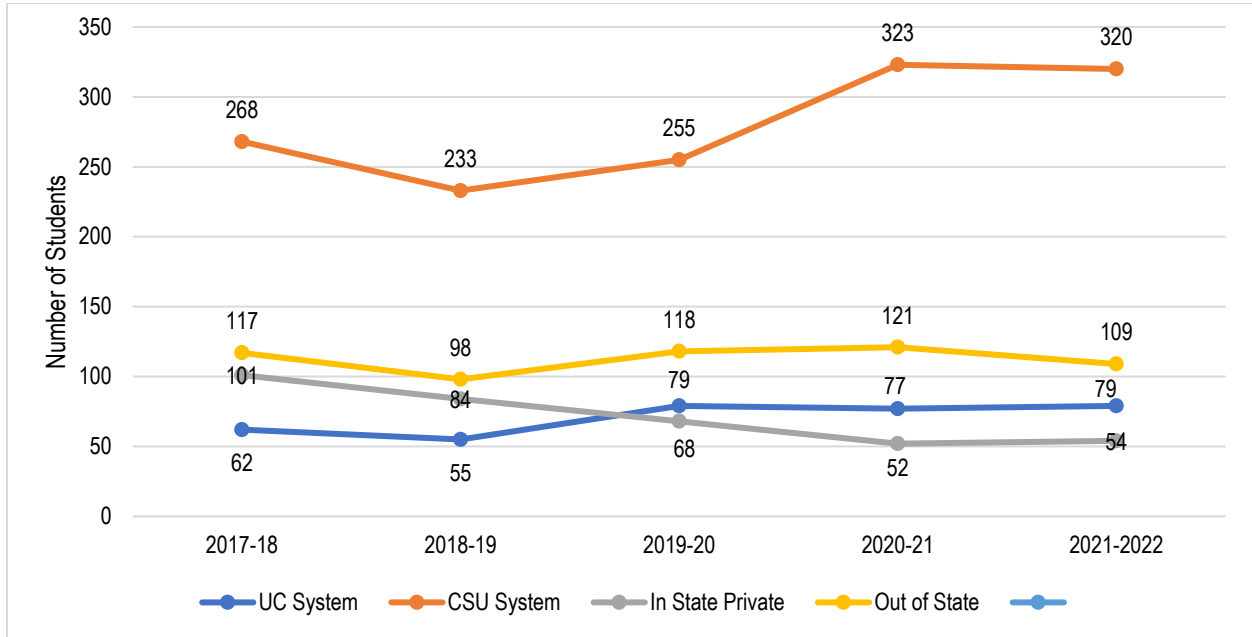
2. Volume of transfers to UC: <https://www.universityofcalifornia.edu/infocenter/admissions-source-school>

3. Volume of transfers to CSU <https://www.calstate.edu/data-center/institutional-research-analyses/Pages/enrollment.aspx>

Between 2017-18 and 2021-22, the annual transfer volume for SBCCD increased by 2.2%, from 1,329 in 2017-18 to 1,358 in 2021-22, with a five-year average of 1,311. Transfer volume increased to the CSU system (+17.3%) and the UC system (+12.1%), while there was a decrease in transfer volume to in state private institutions (-44.2%) and out-of-state institutions (-7.5%).

Over this period, of total students who transferred from both colleges in the District, on average, 57.9% transferred to the California State University (CSU), followed by students who transferred to out-of-state institutions (19.2%), in-state private institutions (12.1%), and the University of California System (10.7%).

Transfer Volume (CSU, UC, In-State, and Out-of-State): Crafton Hills College



	2017-18		2018-19		2019-20		2020-21		2021-22		5 Year Change	5 Year Average
UC System	62	11%	55	12%	79	15%	77	13%	79	14%	+27.4%	70
CSU System	268	49%	233	50%	255	49%	323	56%	320	57%	+19.4%	280
In State Private	101	18%	84	18%	68	13%	52	9%	54	10%	-46.5%	72
Out of State	117	21%	98	21%	118	23%	121	21%	109	19%	-6.8%	113
Total	548	100%	470	100%	520	100%	573	100%	562	100%	+2.6%	535

Sources: 1. Datamart Transfer Volume to In-State Private (ISP) and Out-of-State (OOS)

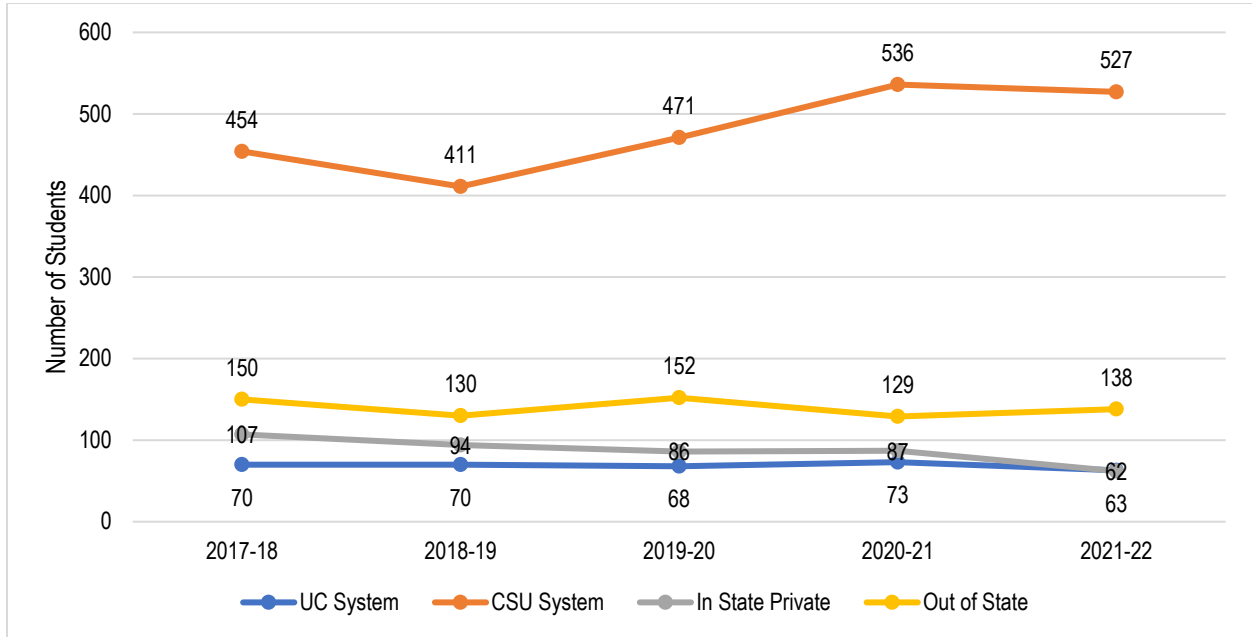
2. Volume of transfers to UC: <https://www.universityofcalifornia.edu/infocenter/admissions-source-school>

3. Volume of transfers to CSU <https://www.calstate.edu/data-center/institutional-research-analyses/Pages/enrollment.aspx>

Between 2017-18 and 2021-22, the annual transfer volume for Crafton Hills College increased by 2.6%, from 548 in 2017-18 to 562 in 2021-22, with a five-year average of 535. Transfer volume increased to the UC system (+27.4%) and the CSU system (+19.4%), while there was a decrease in transfer volume to in state private institutions (-46.5%) and out-of-state institutions (-6.8%).

Over this period, of total students who transferred, on average, 52.3% transferred to the California State University (CSU), followed by students who transferred to out-of-state institutions (21.1%), in-state private institutions (13.4%), and the University of California System (13.2%).

Transfer Volume (CSU, UC, In-State, and Out-of-State): San Bernardino Valley College



	2017-18		2018-19		2019-20		2020-21		2021-22		5 Year Change	5 Year Average
UC System	70	9%	70	10%	68	9%	73	9%	69	9%	-1.4%	70
CSU System	454	59%	411	58%	471	61%	536	65%	527	66%	+16.1%	480
In State Private	107	13%	94	13%	86	11%	87	11%	62	8%	-42.1%	87
Out of State	150	19%	130	18%	152	20%	129	16%	138	17%	-8.0%	140
Total	781	100%	705	100%	777	100%	825	100%	796	100%	+1.9%	777

Sources: 1. Datamart Transfer Volume to In-State Private (ISP) and Out-of-State (OOS)

2. Volume of transfers to UC: <https://www.universityofcalifornia.edu/infocenter/admissions-source-school>

3. Volume of transfers to CSU <https://www.calstate.edu/data-center/institutional-research-analyses/Pages/enrollment.aspx>

Between 2017-18 and 2021-22, the annual transfer volume for San Bernardino Valley College increased by 2.7%, from 781 in 2017-18 to 796 in 2021-22, with a five-year average of 777. Transfer volume increased to the CSU system (+16.1%) while there was a decrease in transfer volume to in state private institutions (-42.5%), and out-of-state institutions (-8.0%), and the UC system (-1.4%).

Over this period, of total students who transferred, on average, 61.8% transferred to the California State University (CSU), followed by students who transferred to out-of-state institutions (18.0%), in-state private institutions (11.2%), and the University of California System (9.0%).

Top Ten Transfers to a Four-Year University: 2021-22

SBCCD

Ranking	University	Students (N=1,359)	Percent
1	CSU-San Bernardino	656	48.3%
2	UC-Riverside	94	6.9%
3	CSU-Pomona	67	4.9%
4	CSU-Fullerton	36	2.6%
5	California Baptist University	33	2.4%
6	Grand Canyon University	28	2.1%
7	University Of Phoenix-Arizona	22	1.6%
8	Southern New Hampshire University	21	1.5%
8	Western Governors University	17	1.3%
10	West Coast University-Los Angeles	16	1.2%

Crafton Hills College

Ranking	University	Students (N=562)	Percent
1	CSU-San Bernardino	242	43.1%
2	UC-Riverside	45	8.0%
3	CSU Pomona	30	5.3%
4	California Baptist University	21	3.7%
5	Grand Canyon University	15	2.7%
5	Western Governors University	11	2.0%
7	CSU-Fullerton	11	2.0%
8	University Of Phoenix-Arizona	10	1.8%
9	UC-San Diego	8	1.4%
9	Southern New Hampshire University	8	1.4%

San Bernardino Valley College

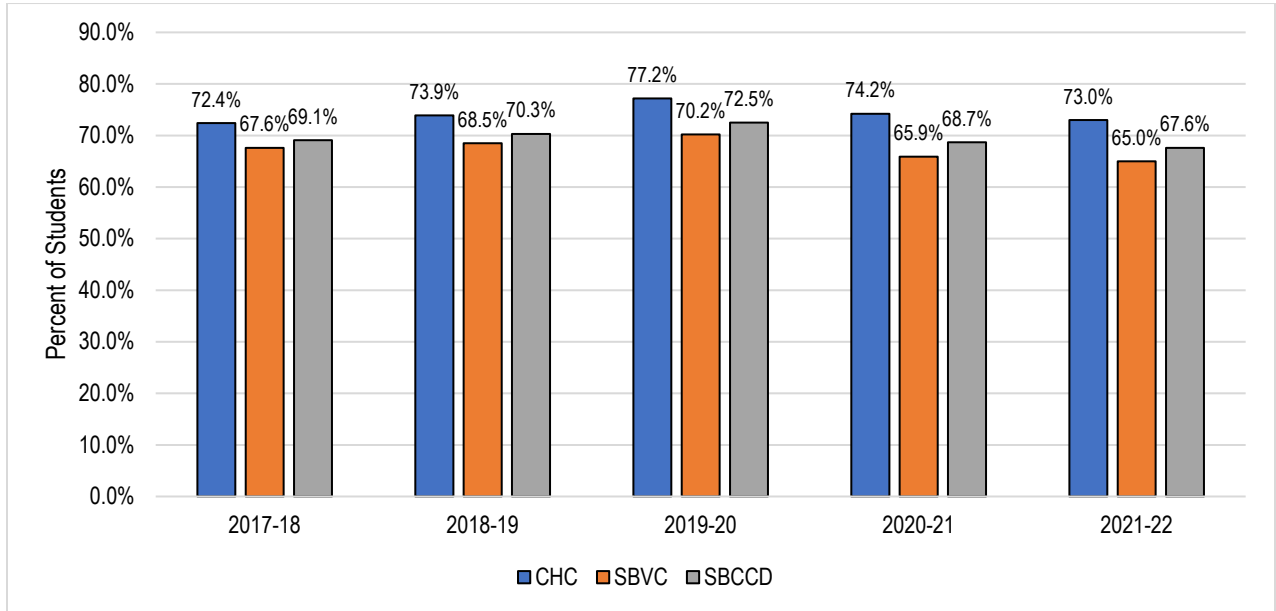
Ranking	University	Students (N=796)	Percent
1	CSU-San Bernardino	414	52.0%
2	UC-Riverside	49	6.2%
3	CSU-Pomona	37	4.6%
4	CSU-Fullerton	25	3.1%
5	Grand Canyon University	13	1.6%
5	Southern New Hampshire University	13	1.6%
7	California Baptist University	12	1.5%
7	University Of Phoenix-Arizona	12	1.5%
9	Los Angeles Pacific University	11	1.4%
10	West Coast University-Los Angeles	10	1.3%

Sources: 1. Datamart Transfer Volume to In-State Private (ISP) and Out-of-State (OOS)

2. Volume of transfers to UC: <https://www.universityofcalifornia.edu/infocenter/admissions-source-school>

3. Volume of transfers to CSU <https://www.calstate.edu/data-center/institutional-research-analyses/Pages/enrollment.aspx>

Course Success Rates



	2017-18	2018-19	2019-20	2020-21	2021-22	5 Year Change	5 Year Average
Crafton Hills College	72.4%	73.9%	77.2%	74.2%	73.0%	+0.6%	74.2%
San Bernardino Valley College	67.6%	68.5%	70.2%	65.9%	65.0%	-2.6%	67.6%
San Bernardino CCD	69.1%	70.3%	72.5%	68.7%	67.6%	-1.5%	69.8%

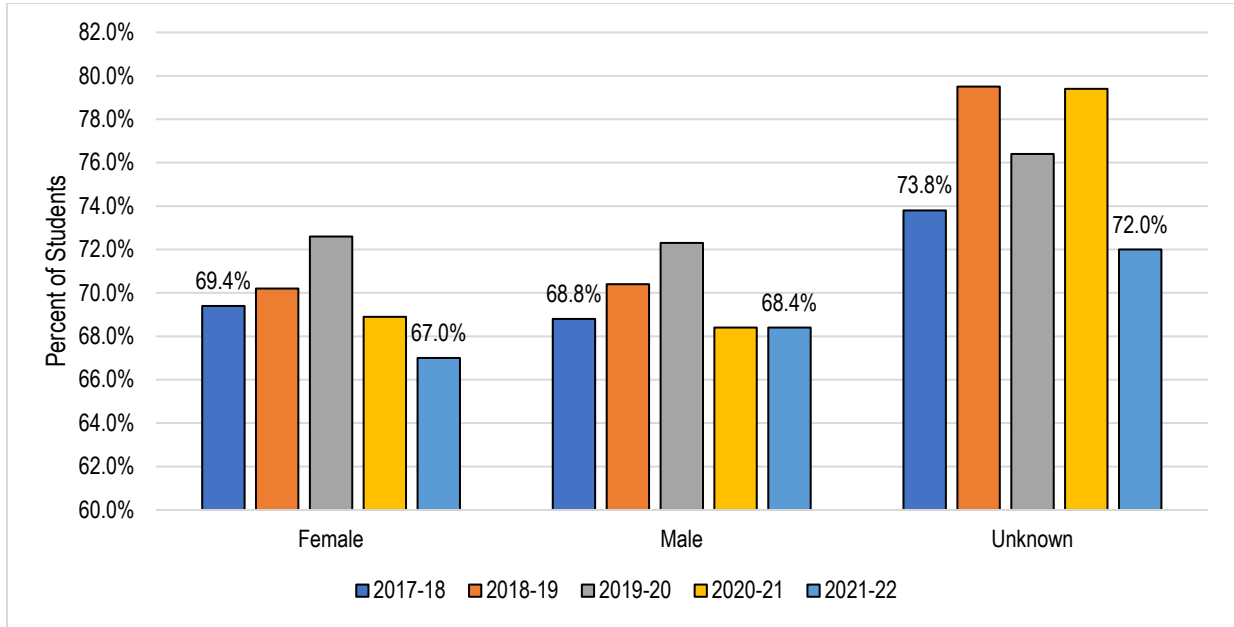
Source: CCCC MIS Referential Data Files.

Success Rate = (A, B, C, P, IA, IB, IC, and IPP Grades / A, B, C, D, F, P, NP, I*, IPP, INP, FW, and W Grades) * 100

Note that Excused withdrawal "EW" occurs when a student is permitted to withdraw from a course(s) due to COVID-19 crisis. This grade is not counted as an enrollment attempt.

Between 2017-18 and 2021-22, the annual success rate of students from both colleges in the District declined by 1.5 percent points, from 69.1% in 2017-18 to 67.6% in 2021-22, with a five-year average of 69.8%.

Course Success Rates by Gender: SBCCD

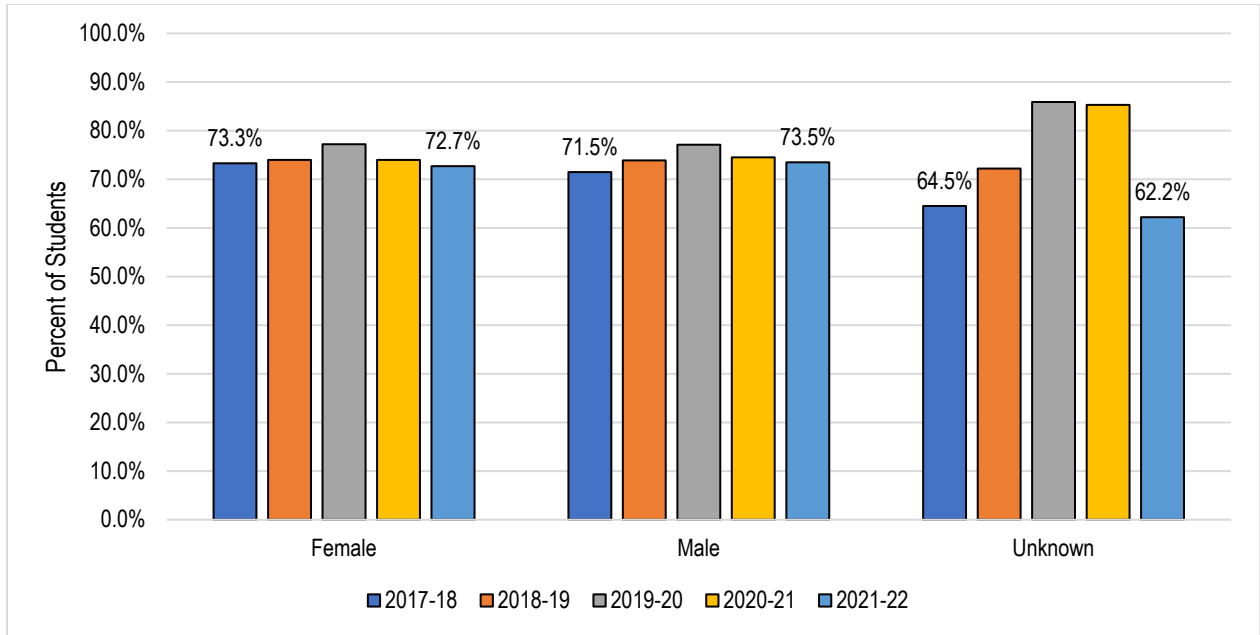


	2017-18	2018-19	2019-20	2020-21	2021-22	5 Year Change	5 Year Average
Female	69.4%	70.2%	72.6%	68.9%	67.0%	-2.4%	69.7%
Male	68.8%	70.4%	72.3%	68.4%	68.4%	-0.4%	69.7%
Unknown	73.8%	79.5%	76.4%	79.4%	72.0%	-1.8%	76.3%
Total	69.1%	70.3%	72.5%	68.7%	67.6%	-1.5%	69.8%

Source: CCCC MIS Referential Data Files.

On average, between 2017-18 and 2021-22, female and male students had the same success rate at 69.7%. Over this period, the success rates for female and male students declined by 2.4% and 0.4%, respectively.

Course Success Rates by Gender: Crafton Hills College

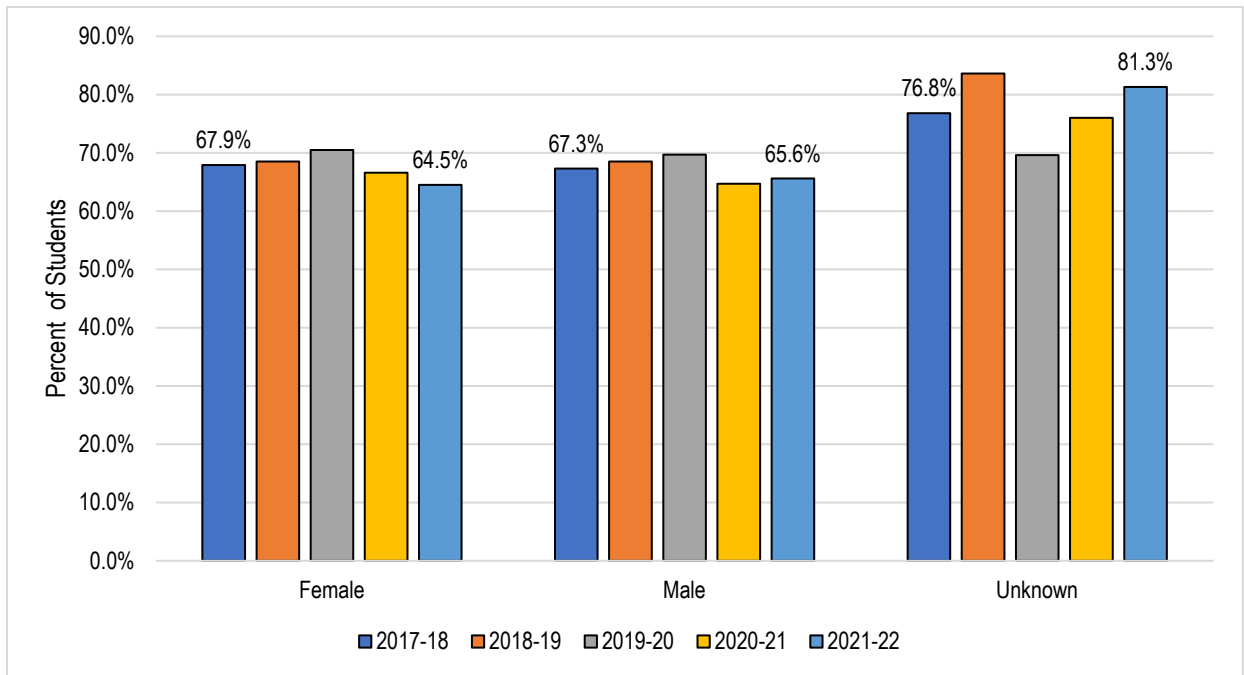


	2017-18	2018-19	2019-20	2020-21	2021-22	5 Year Change	5 Year Average
Female	73.3%	74.0%	77.2%	74.0%	72.7%	-0.6%	74.3%
Male	71.5%	73.9%	77.1%	74.5%	73.5%	+2.0%	74.1%
Unknown	64.5%	72.2%	85.9%	85.3%	62.2%	-2.3%	74.3%
Total	72.4%	73.9%	77.2%	74.2%	73.0%	+0.6%	74.2%

Source: CCCC MIS Referential Data Files.

On average, between 2017-18 and 2021-22, female students had a slightly higher success rate than male students (74.3% vs 74.1%, respectively). Over this period, the success rates for female students declined by 0.6%, while the success rates for male students increased by 2.0%.

Course Success Rates by Gender: San Bernardino Valley College

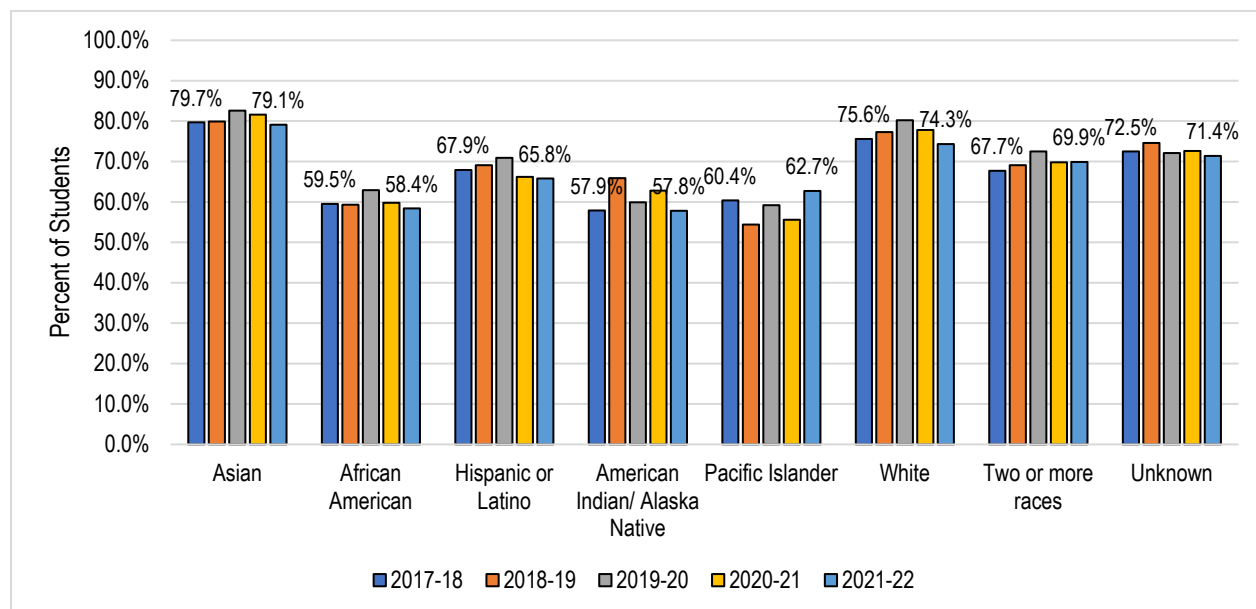


	2017-18	2018-19	2019-20	2020-21	2021-22	5 Year Change	5 Year Average
Female	67.9%	68.5%	70.5%	66.6%	64.5%	-3.4%	67.7%
Male	67.3%	68.5%	69.7%	64.7%	65.6%	-1.7%	67.3%
Unknown	76.8%	83.6%	69.6%	76.0%	81.3%	+4.5%	77.4%
Total	67.6%	68.5%	70.2%	65.9%	65.0%	-2.6%	67.6%

Source: CCCC MIS Referential Data Files.

On average, between 2017-18 and 2021-22, female students had a slightly higher success rate than male students (67.7% vs 67.3%, respectively). Over this period, the success rates for female and male students declined by 3.4% and 1.7%, respectively.

Course Success Rates by Race/Ethnicity: SBCCD



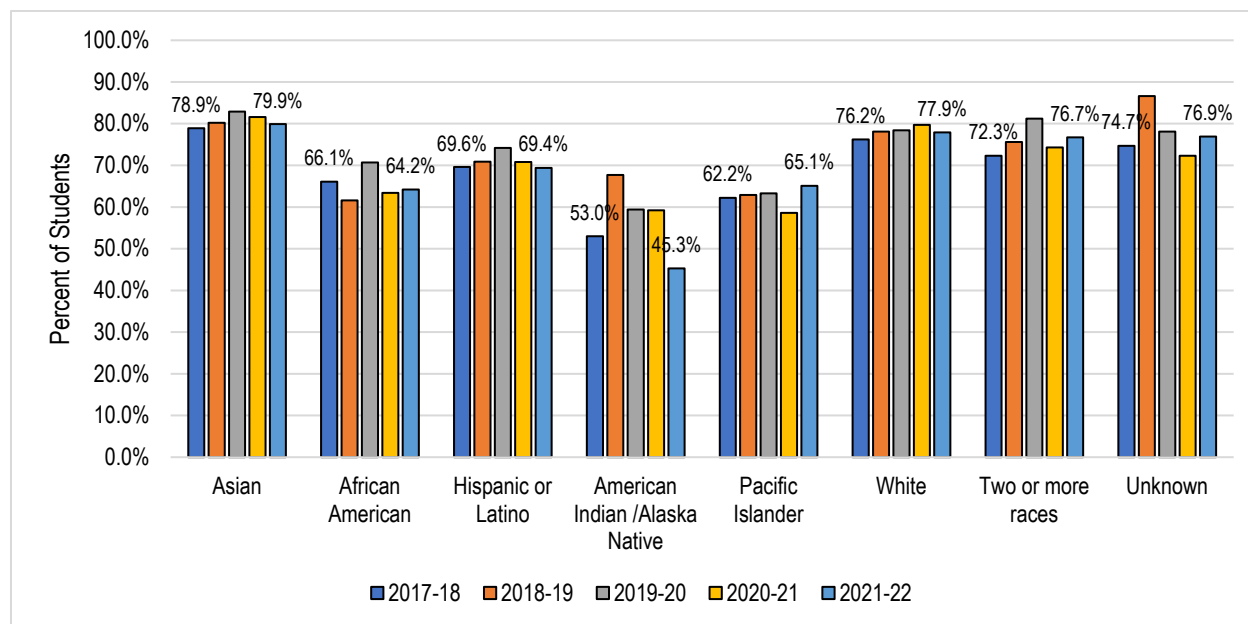
	2017-18	2018-19	2019-20	2020-21	2021-22	5 Year Change	5 Year Average
Asian	79.7%	79.9%	82.6%	81.6%	79.1%	-0.6%	80.7%
African American	59.5%	59.3%	62.9%	59.8%	58.4%	-1.1%	60.0%
Hispanic or Latino	67.9%	69.1%	70.9%	66.2%	65.8%	-2.1%	68.1%
American Indian /Alaska Native	57.9%	65.9%	59.9%	62.8%	57.8%	-0.1%	60.9%
Pacific Islander	60.4%	54.4%	59.2%	55.6%	62.7%	+2.3%	58.4%
White	75.6%	77.3%	80.2%	77.8%	74.3%	-1.3%	77.1%
Two or more races	67.7%	69.1%	72.5%	69.8%	69.9%	+2.2%	69.8%
Unknown	72.5%	74.6%	72.1%	72.6%	71.4%	-1.1%	72.3%
Total Average	69.1%	70.3%	72.5%	68.7%	67.6%	-1.5%	69.8%

Source: CCCC MIS Referential Data Files.

On average, between 2017-18 and 2021-22, Asian students had the highest success rate (80.7%). The second highest were White students with 77.1%. The lowest were African American students (60.0%) and Pacific Islander students (58.4%).

Over this period, the success rates of Pacific Islander (+2.3%) and Multiracial (+2.2%) students increased while the success rates of Hispanic (-2.1%), White (-1.3%), African American (-1.1%), and Asian (-0.6%) students decreased.

Course Success Rates by Race/Ethnicity: Crafton Hills College



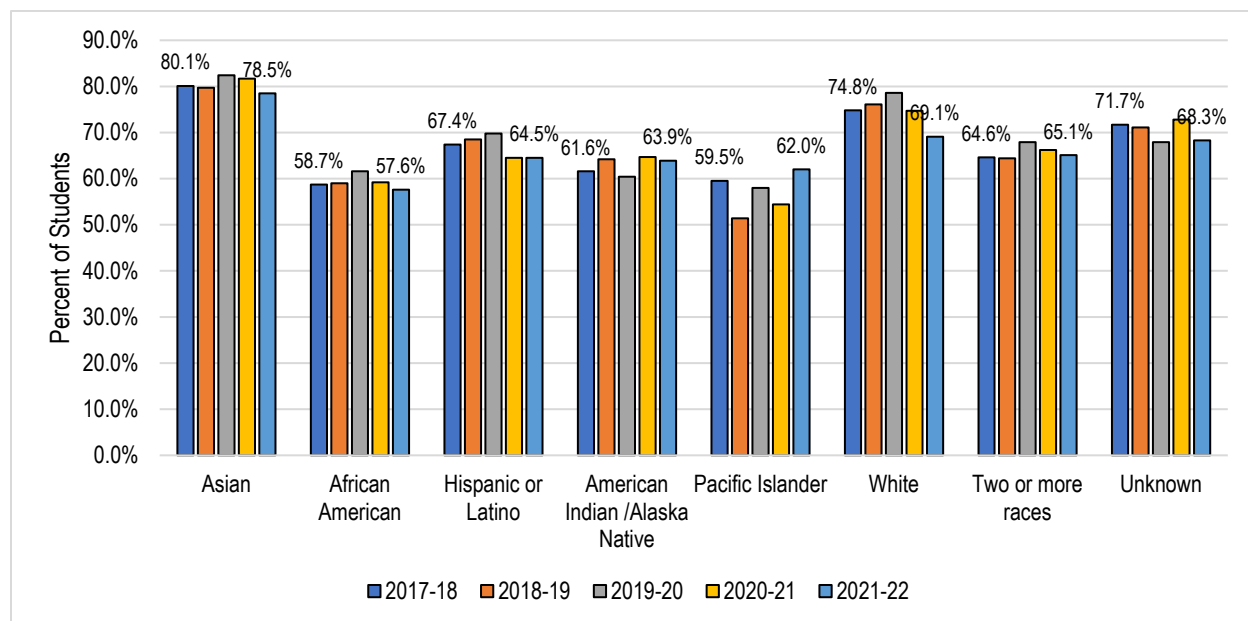
	2017-18	2018-19	2019-20	2020-21	2021-22	5 Year Change	5 Year Average
Asian	78.9%	80.2%	82.9%	81.6%	79.9%	+1.0%	80.8%
African American	66.1%	61.6%	70.7%	63.4%	64.2%	-1.9%	65.3%
Hispanic or Latino	69.6%	70.9%	74.2%	70.8%	69.4%	-0.2%	71.1%
American Indian /Alaska Native	53.0%	67.7%	59.4%	59.2%	45.3%	-7.7%	58.2%
Pacific Islander	62.2%	62.9%	63.3%	58.6%	65.1%	+2.9%	62.2%
White	76.2%	78.1%	78.4%	79.7%	77.9%	+1.7%	78.6%
Two or more races	72.3%	75.6%	81.2%	74.3%	76.7%	+4.4%	75.4%
Unknown	74.7%	86.6%	78.1%	72.3%	76.9%	+2.2%	76.2%
Total Average	72.4%	73.9%	77.2%	74.2%	73.0%	+0.6%	74.2%

Source: CCCC MIS Referential Data Files.

On average, between 2017-18 and 2021-22, Asian students had the highest success rate (80.8%). The second highest were White students with 78.6%. The lowest were American Indian /Alaska Native students (58.2%) and Pacific Islander students (62.2%).

Over this period, the success rates of Multiracial (+4.4%), Pacific Islander (+2.9%), White (+1.7%), and Asian (+1.0%) students increased while the success rates of American Indian /Alaska Native (-7.7%), African American (-1.9%), and Hispanic (-0.2%) students decreased.

Course Success Rates by Race/Ethnicity: San Bernardino Valley College



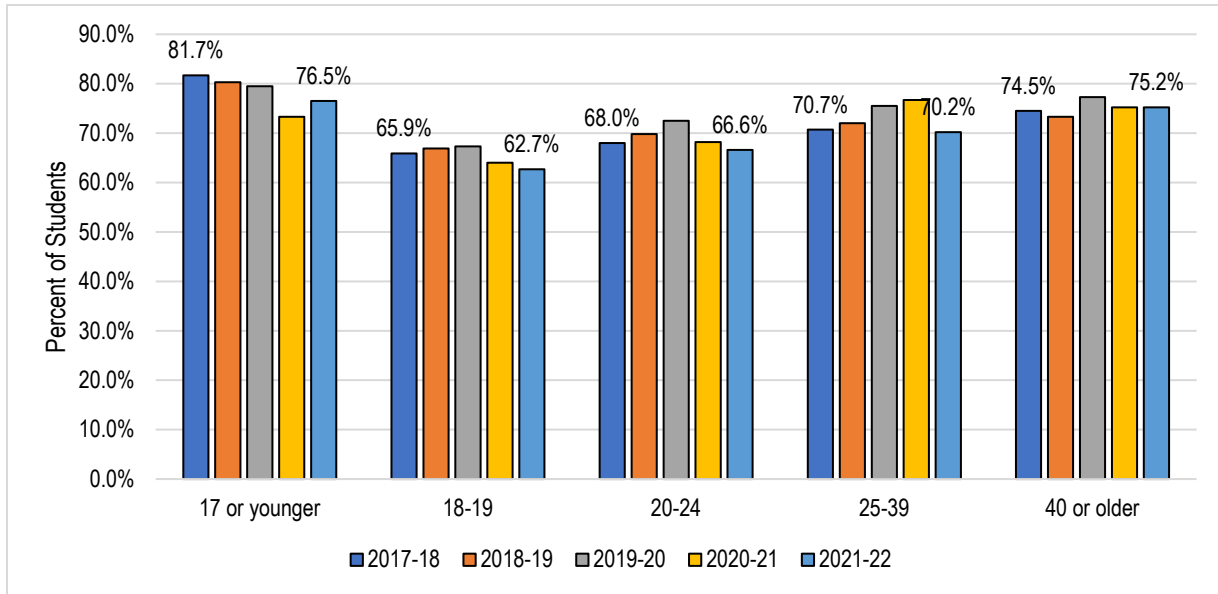
	2017-18	2018-19	2019-20	2020-21	2021-22	5 Year Change	5 Year Average
Asian	80.1%	79.7%	82.4%	81.7%	78.5%	-1.6%	80.5%
Black or African American	58.7%	59.0%	61.6%	59.2%	57.6%	-1.1%	59.3%
Hispanic or Latino	67.4%	68.5%	69.8%	64.5%	64.5%	-2.9%	67.1%
American Indian /Alaska Native	61.6%	64.2%	60.4%	64.7%	63.9%	+2.3%	62.9%
Pacific Islander	59.5%	51.4%	58.0%	54.4%	62.0%	+2.5%	57.0%
White	74.8%	76.1%	78.6%	74.7%	69.1%	-5.7%	74.9%
Two or more races	64.6%	64.4%	67.9%	66.2%	65.1%	+0.5%	65.6%
Unknown	71.7%	71.1%	67.9%	72.8%	68.3%	-3.4%	69.9%
Total Average	67.6%	68.5%	70.2%	65.9%	65.0%	-2.6%	67.6%

Source: CCCC MIS Referential Data Files.

On average, between 2017-18 and 2021-22, Asian students had the highest success rate (80.5%). The second highest were White students with 74.9%. The lowest were Pacific Islander students (57.0%) and African American students (59.3%).

Over this period, the success rates of Pacific Islander (+2.5%), American Indian /Alaska Native (+2.3%) and Multiracial (+0.5%) students increased, while the success rate of White (-5.7%), Hispanic (-2.9%), Asian (-1.6%), and Black or African American (-1.1%) students decreased.

Course Success Rates by Age: SBCCD



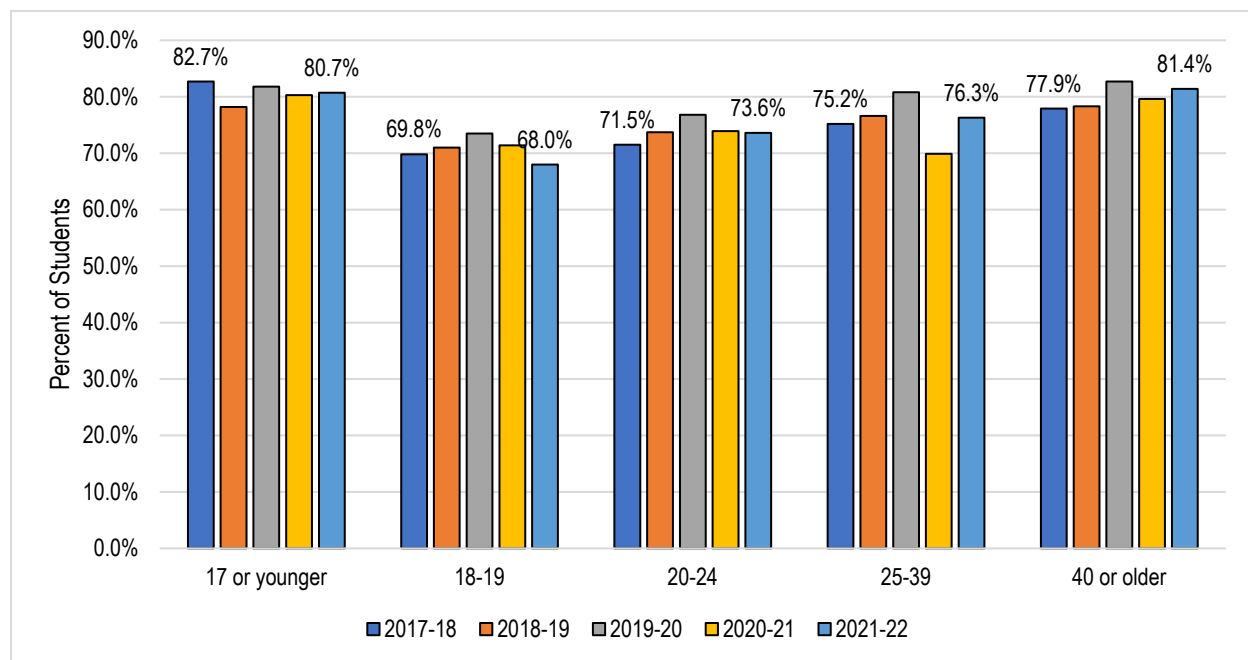
	2017-18	2018-19	2019-20	2020-21	2021-22	5 Year Change	5 Year Average
17 or younger	81.7%	80.3%	79.5%	73.3%	76.5%	-5.2%	78.2%
18-19	65.9%	66.9%	67.3%	64.0%	62.7%	-3.2%	65.5%
20-24	68.0%	69.8%	72.5%	68.2%	66.6%	-1.4%	69.2%
25-39	70.7%	72.0%	75.5%	76.7%	70.2%	-0.5%	72.4%
40 or older	74.5%	73.3%	77.3%	75.2%	75.2%	+0.7%	75.1%
Total Average	69.1%	70.3%	72.5%	68.7%	67.6%	-1.5%	69.8%

Source: CCCCO MIS Referential Data Files.

On average, between 2017-18 and 2021-22, students under 17 years old had the highest success rate (78.2%). The lowest success rate was seen in students 18-19 years old (65.5%).

Over this period, the success rate of students over 40 years old (+0.7%) increased while the success rates of students under 17 years old (-5.2%), students 18-19 years old (-3.2%), students 20-24 years old (-1.4%), and students 25-39 years old (-0.5%) decreased.

Course Success Rates by Age: Crafton Hills College



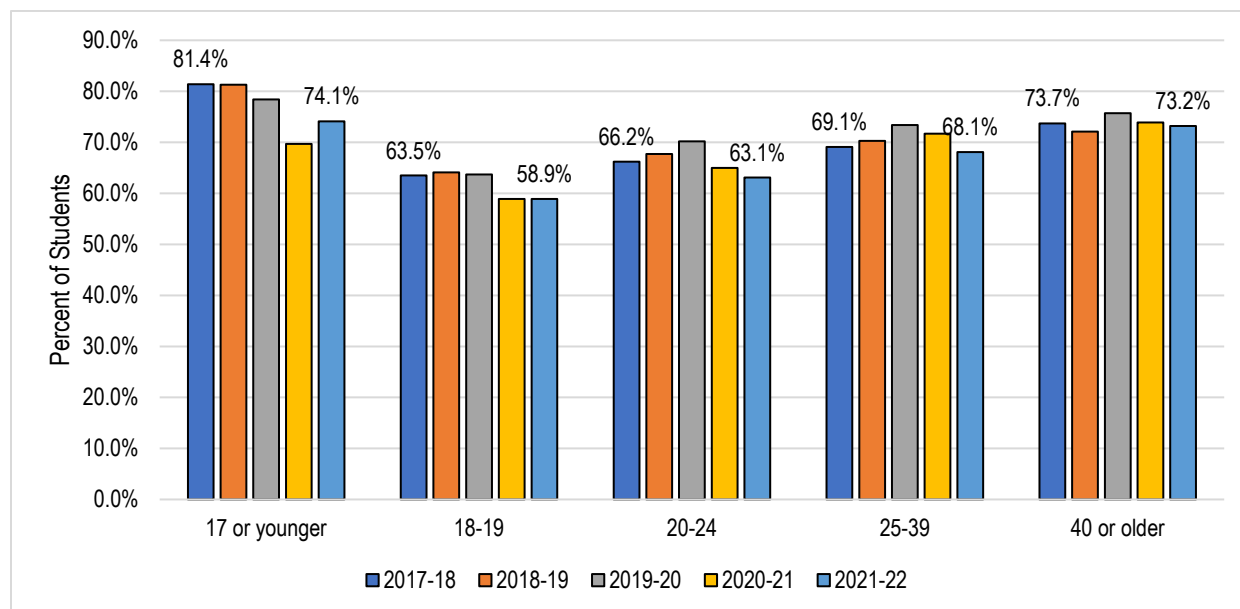
	2017-18	2018-19	2019-20	2020-21	2021-22	5 Year Change	5 Year Average
17 or younger	82.7%	78.2%	81.8%	80.3%	80.7%	-2.0%	80.7%
18-19	69.8%	71.0%	73.5%	71.4%	68.0%	-1.8%	70.8%
20-24	71.5%	73.7%	76.8%	73.9%	73.6%	+2.1%	73.9%
25-39	75.2%	76.6%	80.8%	69.9%	76.3%	+1.1%	74.4%
40 or older	77.9%	78.3%	82.7%	79.6%	81.4%	+3.5%	80.1%
Total Average	72.4%	73.9%	77.2%	74.2%	73.0%	+0.6%	74.2%

Source: CCCC MIS Referential Data Files.

On average, between 2017-18 and 2021-22, the age groups with the highest success rates were students under 17 years old (80.7%) and students over 40 years old (80.1%). The lowest success rate was seen in students 18-19 years old (70.8%).

Over this period, the success rate of students over 40 years old (+3.5%), students 20-24 years old (+2.1%), and students 25-39 years old (+1.1%) increased while the success rates of students under 17 years old (-2.0%) and students 18-19 years old (-1.8%) decreased.

Course Success Rates by Age: San Bernardino Valley College



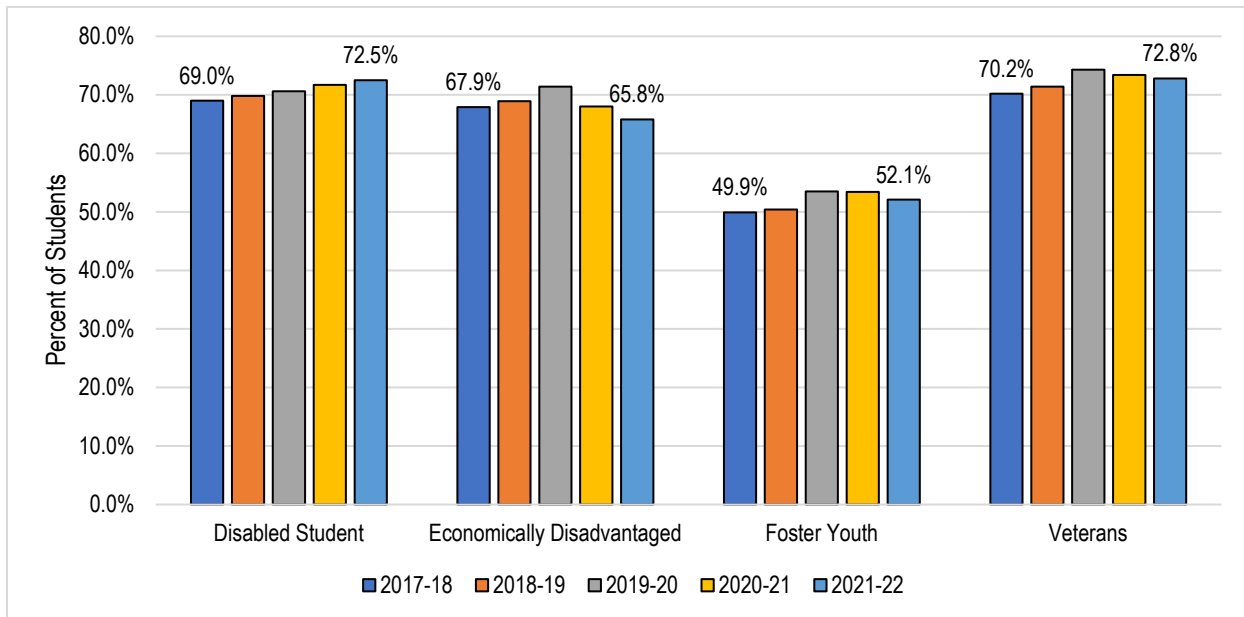
	2017-18	2018-19	2019-20	2020-21	2021-22	5 Year Change	5 Year Average
17 or younger	81.4%	81.3%	78.4%	69.7%	74.1%	-7.3%	77.0%
18-19	63.5%	64.1%	63.7%	58.9%	58.9%	-4.6%	62.0%
20-24	66.2%	67.7%	70.2%	65.0%	63.1%	-3.1%	66.6%
25-39	69.1%	70.3%	73.4%	71.7%	68.1%	-1.0%	70.6%
40 or older	73.7%	72.1%	75.7%	73.9%	73.2%	-0.5%	73.7%
Total Average	67.6%	68.5%	70.2%	65.9%	65.0%	-2.6%	67.6%

Source: CCCC MIS Referential Data Files.

On average, between 2017-18 and 2021-22, the age group with the highest success rate was students under 17 years old (77.0%), while the lowest success rate was seen in students 18-19 years old (62.0%).

Over this period, the success rates of students under 17 years old (-7.3%), students 18-19 years (-4.6%), students 20-24 years old (-3.1%), students 25-39 years old (-1.0%), and students over 40 years old (-0.5%) declined.

Course Success Rates by Special Population: SBCCD



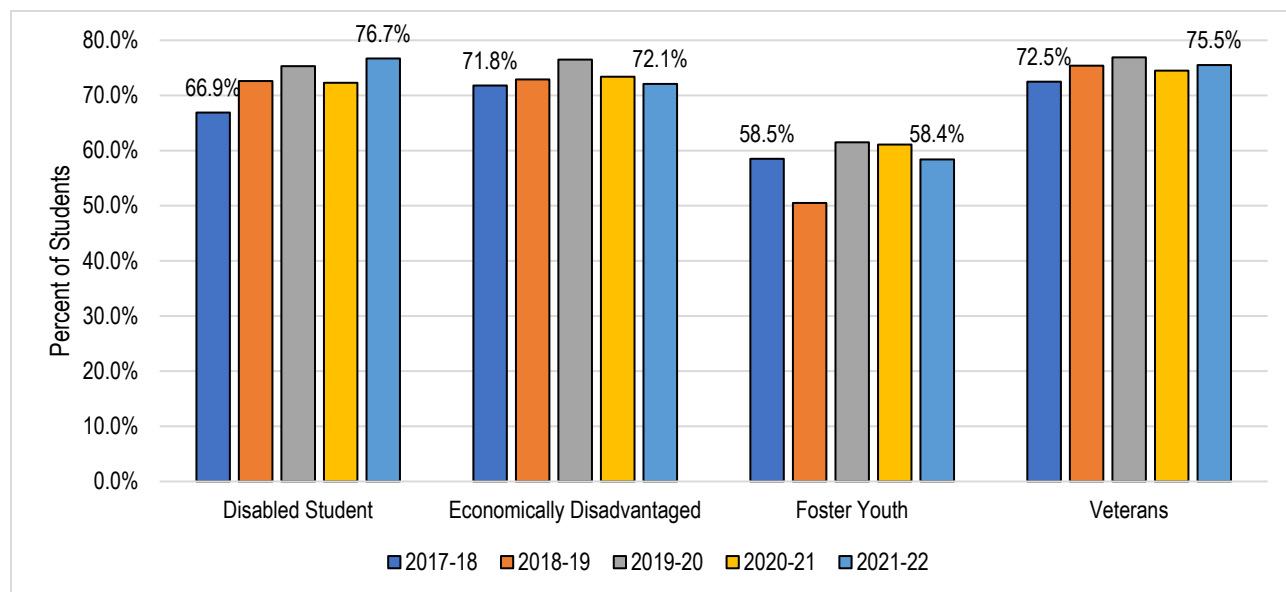
	2017-18	2018-19	2019-20	2020-21	2021-22	5 Year Change	5 Year Average
Disabled Student	69.0%	69.8%	70.6%	71.7%	72.5%	+3.5%	70.6%
Economically Disadvantaged	67.9%	68.9%	71.4%	68.0%	65.8%	-2.1%	68.6%
Foster Youth	49.9%	50.4%	53.5%	53.4%	52.1%	+2.2%	51.9%
Veterans	70.2%	71.4%	74.3%	73.4%	72.8%	+2.6%	72.3%
Total Average	69.1%	70.3%	72.5%	68.7%	67.6%	-1.5%	69.8%

Source: CCCC MIS Referential Data Files.

On average, between 2017-18 and 2021-22, veteran students had the highest success rate (72.3%). The average success rates of foster youth students (51.9 %) and economically disadvantaged students (68.6%) were lower than the average success rate for SBCCD (69.8%).

Over this period, the success rates of economically disadvantaged students decreased by 2.1%, while the success rates of the students with disabilities, foster youth students, and veteran students increased by 3.5% and 2.2% and 2.6%, respectively.

Course Success Rates by Special Population: Crafton Hills College



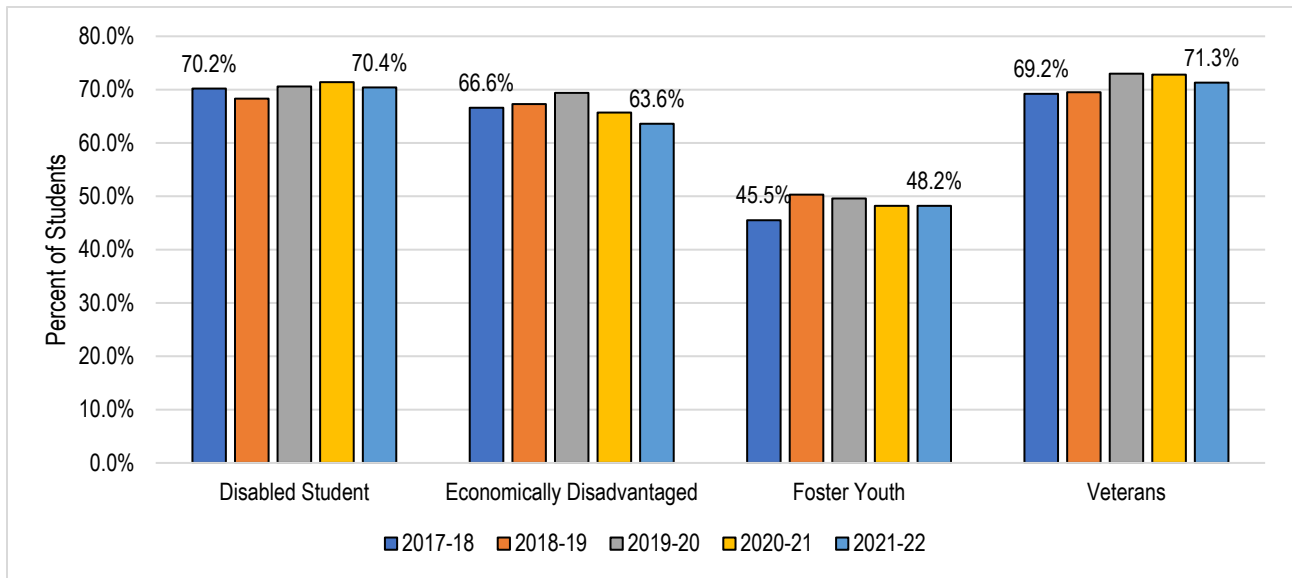
	2017-18	2018-19	2019-20	2020-21	2021-22	5 Year Change	5 Year Average
Disabled Student	66.9%	72.6%	75.3%	72.3%	76.7%	+9.8%	72.5%
Economically Disadvantaged	71.8%	72.9%	76.5%	73.4%	72.1%	+0.3%	73.4%
Foster Youth	58.5%	50.5%	61.5%	61.1%	58.4%	-0.1%	58.5%
Veterans	72.5%	75.4%	76.9%	74.5%	75.5%	+3.0%	74.9%
Total Average	72.4%	73.9%	77.2%	74.2%	73.0%	+0.6%	74.2%

Source: CCCC MIS Referential Data Files.

On average, between 2017-18 and 2021-22, veteran students had the highest success rate (74.9%). The average success rates of foster youth students (58.5%), students with disabilities (72.5%), and economically disadvantaged students (73.4%) were lower than the average overall success rate for Crafton Hills College (74.2%).

Over this period, the success rates of the veteran students and students with disabilities increased by 3.0% and 9.8%, respectively.

Course Success Rates by Special Population: San Bernardino Valley College



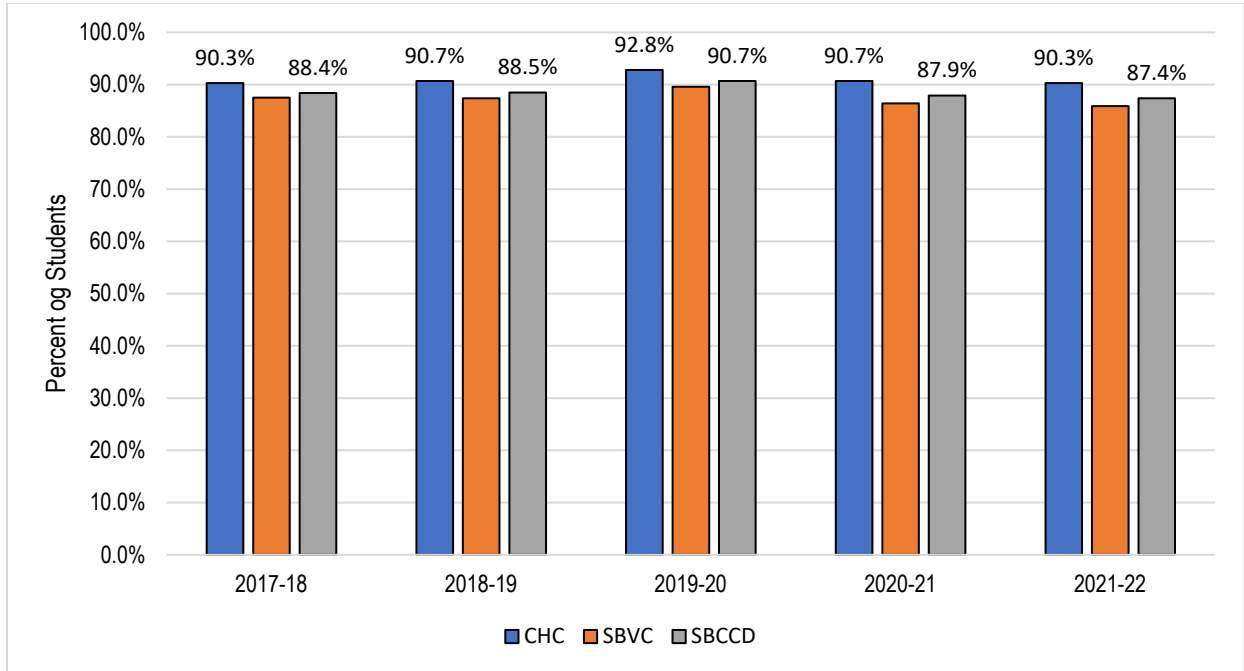
	2017-18	2018-19	2019-20	2020-21	2021-22	5 Year Change	5 Year Average
Disabled Student	70.2%	68.3%	70.6%	71.4%	70.4%	+0.2%	70.1%
Economically Disadvantaged	66.6%	67.3%	69.4%	65.4%	63.6%	-3.0%	66.8%
Foster Youth	45.5%	50.3%	49.6%	48.2%	48.2%	+2.7%	48.4%
Veterans	69.2%	69.5%	73.0%	72.8%	71.3%	+2.1%	71.0%
Total Average	67.6%	68.5%	70.2%	65.9%	65.0%	-2.6%	67.6%

Source: CCCC MIS Referential Data Files.

On average, between 2017-18 and 2021-22, veteran students had the highest success rate (71.0%). The average success rates of foster youth students (48.4%) and economically disadvantaged students (66.8%) were lower than the average overall success rate for San Bernardino Valley College (67.6%).

Over this period, the success rates of economically disadvantaged students decreased by 3.0%, while the success rates of the veteran students, foster youth students, and students with disabilities increased by 2.1% and 2.7% and 0.2%, respectively.

Course Retention Rates



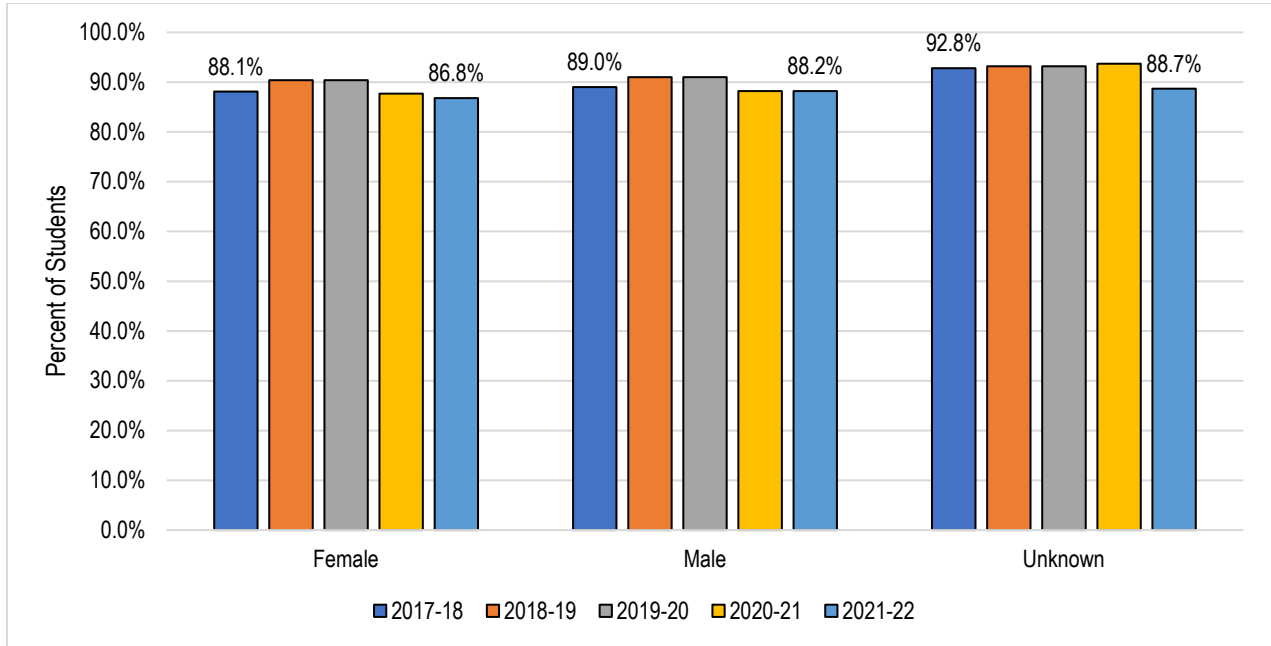
	2017-18	2018-19	2019-20	2020-21	2021-22	5 Year Change	5 Year Average
Crafton Hills College	90.3%	90.7%	92.8%	90.7%	90.3%	0.0%	91.0%
San Bernardino Valley College	87.5%	87.4%	89.6%	86.4%	85.9%	-1.6%	87.5%
SBCCD (Total)	88.4%	88.5%	90.7%	87.9%	87.4%	-1.0%	88.6%

Source: CCCC MIS Referential Data Files.

Retention Rate = (A, B, C, D, F, I*, IPP, P, NP, and FW Grades / A, B, C, D, F, FW, I*, IPP, P, NP, FW, and W Grades) * 100

The annual course retention rate of students from both colleges in the District declined by 1.0 percentage points, from 88.4% in 2017-18 to 87.4% in 2021-22, with a five-year average of 88.6%.

Course Retention Rates by Gender: SBCCD

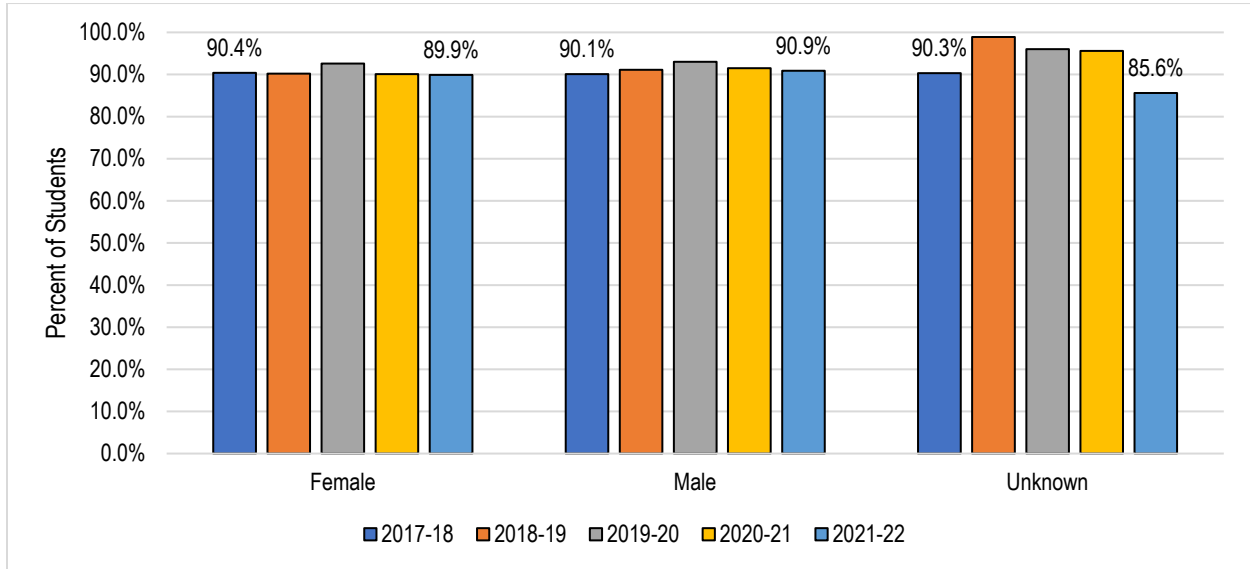


	2017-18	2018-19	2019-20	2020-21	2021-22	5 Year Change	5 Year Average
Female	88.1%	90.4%	90.4%	87.7%	86.8%	-1.5%	88.3%
Male	89.0%	91.0%	91.0%	88.2%	88.2%	-0.3%	89.1%
Unknown	92.8%	93.2%	93.2%	93.7%	88.7%	0.2%	91.4%
Total Average	88.4%	88.5%	90.7%	87.9%	87.4%	-1.0%	88.6%

Source: CCCC MIS Referential Data Files.

On average, between 2017-18 and 2021-22, male students had a slightly higher retention rate than female students (89.1% & 88.3%, respectively). Over this period, the retention rates for female and male students decreased by 1.5% and 0.3%, respectively.

Course Retention Rates by Gender: Crafton Hills College

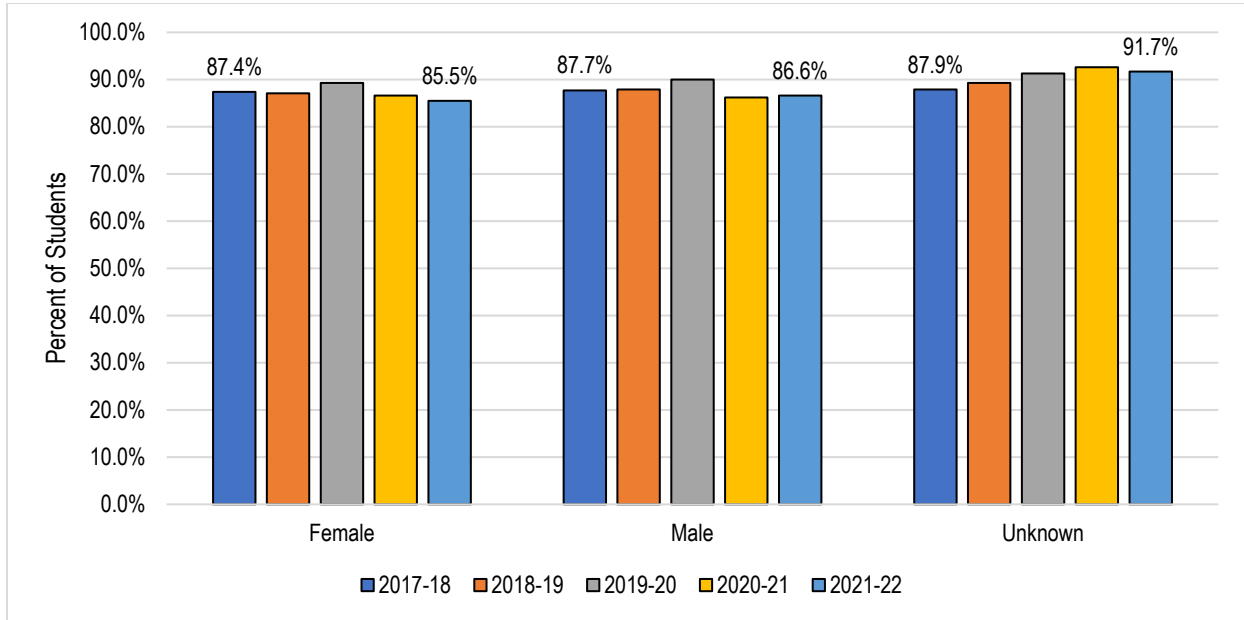


	2017-18	2018-19	2019-20	2020-21	2021-22	5 Year Change	5 Year Average
Female	90.4%	90.2%	92.6%	90.1%	89.9%	-0.5%	90.7%
Male	90.1%	91.1%	93.0%	91.5%	90.9%	0.8%	91.4%
Unknown	90.3%	98.9%	96.0%	95.6%	85.6%	-4.7%	93.4%
Total Average	90.3%	90.7%	92.8%	90.7%	90.3%	0.0%	91.0%

Source: CCCC MIS Referential Data Files.

On average, between 2017-18 and 2021-22, male students had a higher retention rate than female students (91.4% & 90.7%, respectively). Over this period, the retention rate for male students increased by 0.8% while the retention rate for female students declined by 0.5%.

Course Retention Rates by Gender: San Bernardino Valley College

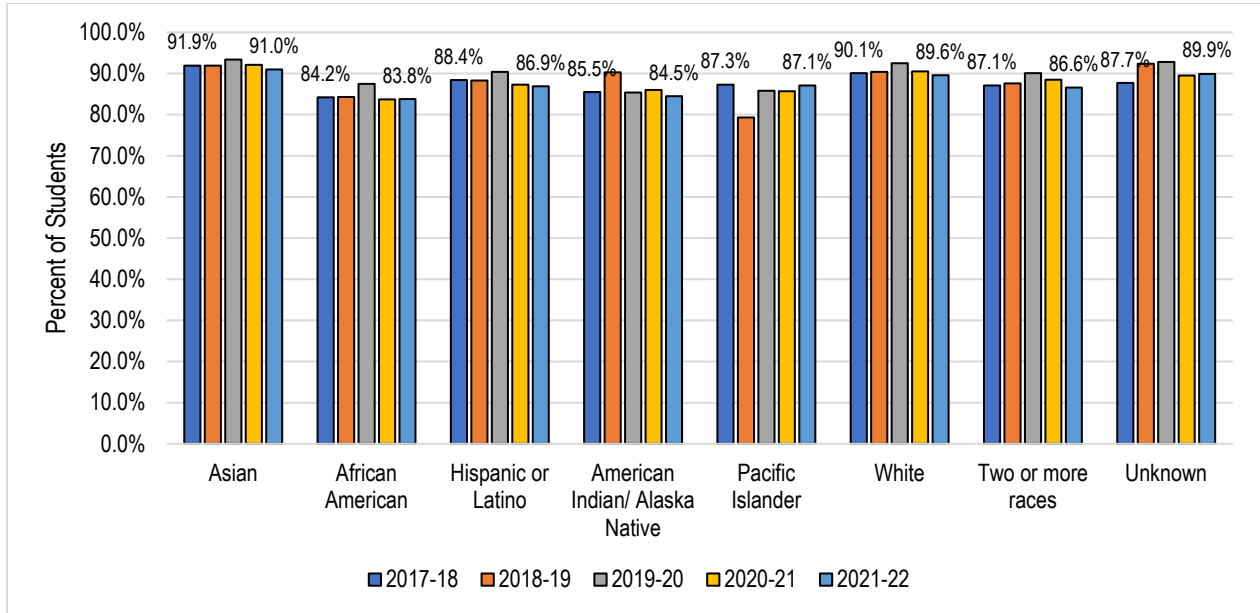


	2017-18	2018-19	2019-20	2020-21	2021-22	5 Year Change	5 Year Average
Female	87.4%	87.1%	89.3%	86.6%	85.5%	-1.9%	87.2%
Male	87.7%	87.9%	90.0%	86.2%	86.6%	-1.1%	87.8%
Unknown	87.9%	89.3%	91.3%	92.6%	91.7%	3.8%	90.2%
Total Average	87.5%	87.4%	89.6%	86.4%	85.9%	-1.6%	87.5%

Source: CCCC MIS Referential Data Files.

Overall, between 2017-18 and 2021-22, male students had a slightly higher retention rate than female students (87.8% & 87.2%, respectively). Over this period, the retention rates for female and male students declined by 1.9% and 1.1%, respectively.

Course Retention Rates by Race/Ethnicity: SBCCD

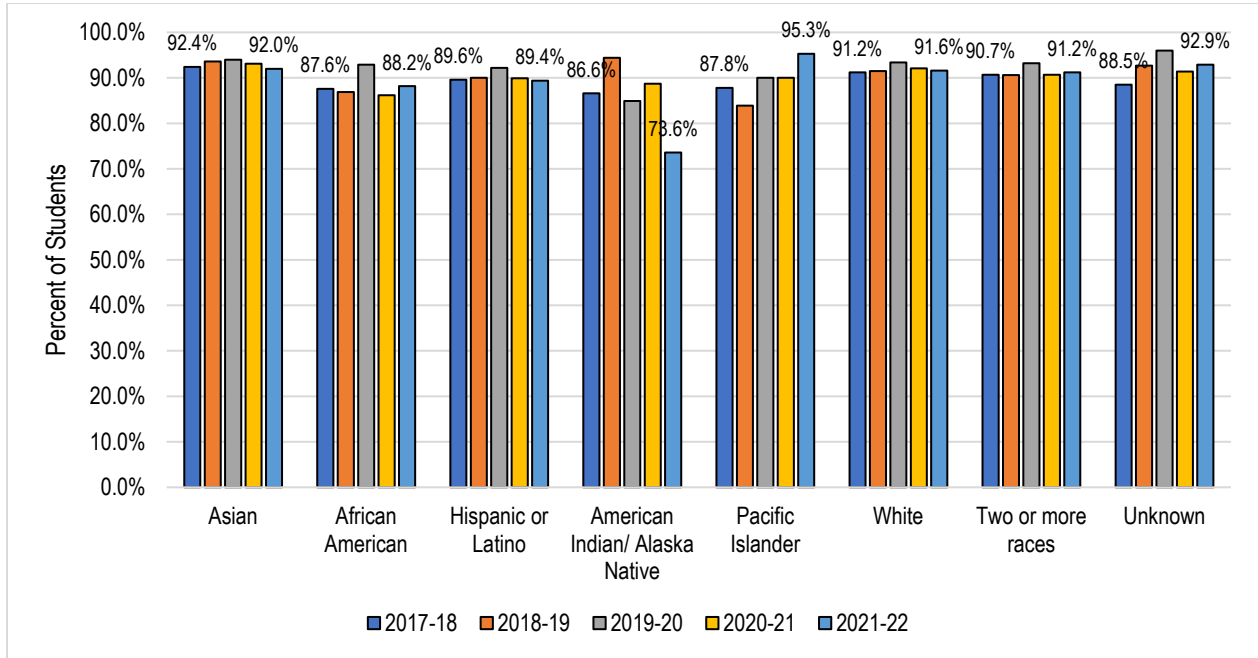


	2017-18	2018-19	2019-20	2020-21	2021-22	5 Year Change	5 Year Average
Asian	91.9%	91.9%	93.4%	92.1%	91.0%	-0.9%	92.1%
African American	84.2%	84.3%	87.5%	83.7%	83.8%	-0.4%	84.8%
Hispanic or Latino	88.4%	88.3%	90.4%	87.3%	86.9%	-1.5%	88.3%
American Indian /Alaska Native	85.5%	90.3%	85.4%	86.0%	84.5%	-1.0%	86.5%
Pacific Islander	87.3%	79.3%	85.8%	85.7%	87.1%	-0.2%	85.1%
White	90.1%	90.4%	92.5%	90.5%	89.6%	-0.5%	90.6%
Two or more races	87.1%	87.6%	90.1%	88.5%	86.6%	-0.5%	88.0%
Unknown	87.7%	92.4%	92.8%	89.5%	89.9%	+2.2%	90.9%
Total Average	88.4%	88.5%	90.7%	87.9%	87.4%	-1.0%	88.6%

Source: CCCC MIS Referential Data Files.

On average, between 2017-18 and 2021-22, Asian students had the highest retention rate (92.1%). The second highest were White students with 90.6%. The lowest were African American students with 84.8%. Over this period, the retention rates of Hispanic (-1.5%), American Indian /Alaska Native (-1.0%), Asian (-0.9%), White (-0.5%), and African American (-0.4%) students decreased.

Course Retention Rates by Race/Ethnicity: Crafton Hills College



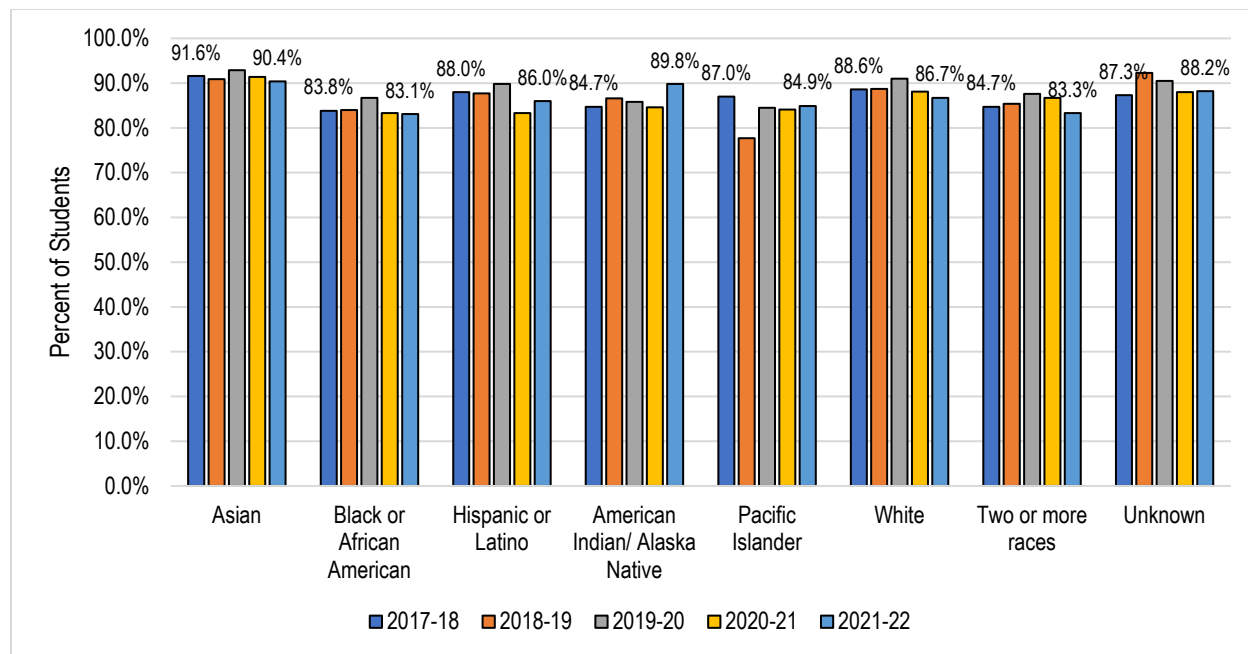
	2017-18	2018-19	2019-20	2020-21	2021-22	5 Year Change	5 Year Average
Asian	92.4%	93.6%	94.0%	93.1%	92.0%	-0.4%	93.1%
African American	87.6%	86.9%	92.9%	86.2%	88.2%	+0.6%	88.4%
Hispanic or Latino	89.6%	90.0%	92.2%	89.9%	89.4%	-0.2%	90.2%
American Indian /Alaska Native	86.6%	94.4%	84.9%	88.7%	73.6%	-13.0%	87.1%
Pacific Islander	87.8%	83.9%	90.0%	90.0%	95.3%	+7.5%	88.7%
White	91.2%	91.5%	93.4%	92.1%	91.6%	+0.4%	91.9%
Two or more races	90.7%	90.6%	93.2%	90.7%	91.2%	+0.5%	91.3%
Unknown	88.5%	92.7%	96.0%	91.4%	92.9%	+4.4%	93.4%
Total Average	90.3%	90.7%	92.8%	90.7%	90.3%	0.0%	91.0%

Source: CCCC MIS Referential Data Files.

On average, between 2017-18 and 2021-22, Asian students had the highest retention rate (93.1%). The second highest were White students with 91.9%. The lowest were American Indian /Alaska Native students with 87.1%.

Over this period, the retention rates of Pacific Islander (+7.5%), African American (+0.6%), and White (+0.4%) students increased while the retention rates of American Indian /Alaska Native (-13%), Asian (-0.4%), and Hispanic (-0.2%) students decreased.

Course Retention Rates by Race/Ethnicity: San Bernardino Valley College



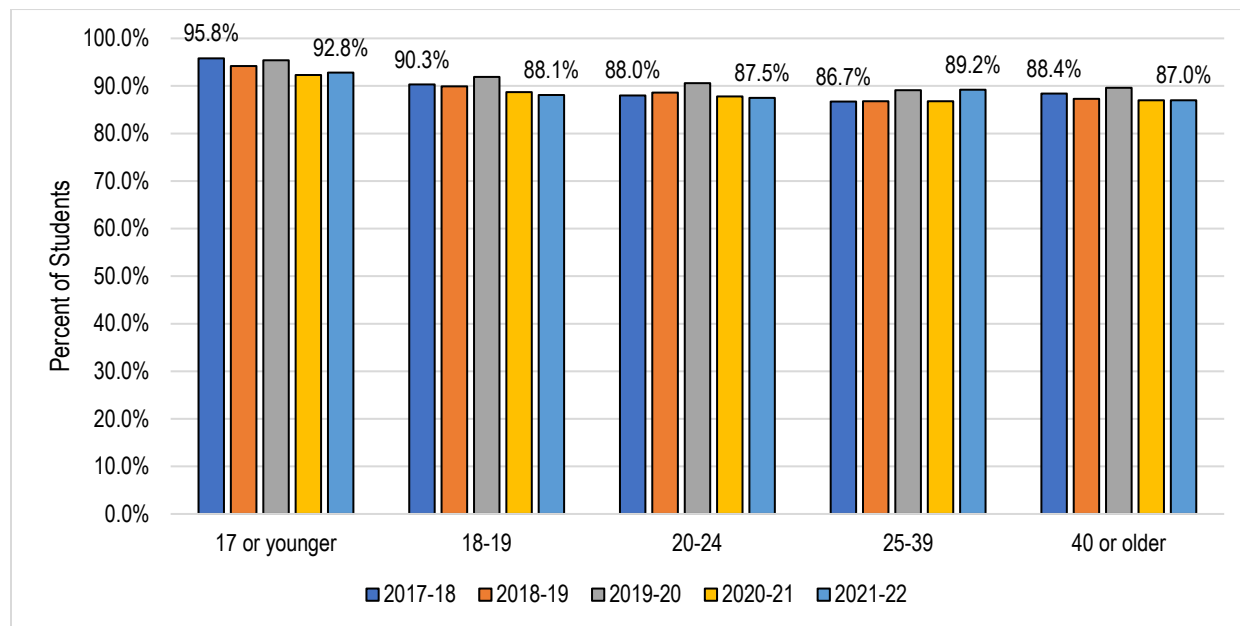
	2017-18	2018-19	2019-20	2020-21	2021-22	5 Year Change	5 Year Average
Asian	91.6%	90.9%	92.9%	91.4%	90.4%	-1.2%	91.5%
African American	83.8%	84.0%	86.7%	83.3%	83.1%	-0.7%	84.2%
Hispanic or Latino	88.0%	87.7%	89.8%	83.3%	86.0%	-2.0%	87.8%
American Indian /Alaska Native	84.7%	86.6%	85.8%	84.6%	89.8%	+5.1%	86.1%
Pacific Islander	87.0%	77.7%	84.5%	84.1%	84.9%	-2.1%	83.7%
White	88.6%	88.7%	91.0%	88.1%	86.7%	-1.9%	88.7%
Two or more races	84.7%	85.4%	87.6%	86.7%	83.3%	-1.4%	85.6%
Unknown	87.3%	92.3%	90.5%	88.0%	88.2%	+0.9%	89.4%
Total Average	87.5%	87.4%	89.6%	86.4%	85.9%	-1.6%	87.5%

Source: CCCC MIS Referential Data Files.

On average, between 2017-18 and 2021-22, Asian students had the highest retention rate (91.5%). The second highest were White students with 88.7%. The lowest were Pacific Islander Students (83.7%) and African American students (84.2%).

Over this period, the retention rate of American Indian /Alaska Native (+5.1%) students increased while the retention rates of Pacific Islander (-2.1%), Hispanic (-2.0%), White (-1.9%), Asian (-1.2%), and African American (-0.7%) students decreased.

Course Retention Rates by Age: SBCCD

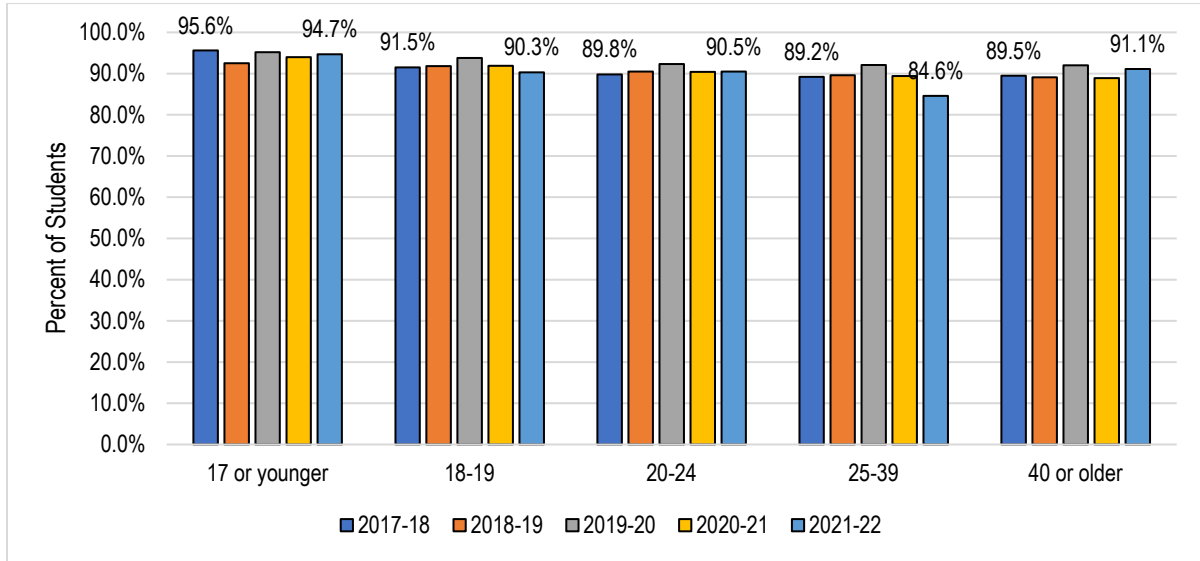


	2017-18	2018-19	2019-20	2020-21	2021-22	5 Year Change	5 Year Average
17 or younger	95.8%	94.2%	95.4%	92.3%	92.8%	-3.0%	94.1%
18-19	90.3%	89.9%	91.9%	88.7%	88.1%	-2.2%	89.9%
20-24	88.0%	88.6%	90.6%	87.8%	87.5%	-0.5%	88.6%
25-39	86.7%	86.8%	89.1%	86.8%	89.2%	+2.5%	87.4%
40 or older	88.4%	87.3%	89.6%	87.0%	87.0%	-1.4%	87.9%
Total Average	88.4%	88.5%	90.7%	87.9%	87.4%	-1.0%	88.6%

Source: CCCC MIS Referential Data Files.

On average, between 2017-18 and 2021-22, students under 17 years old had the highest retention rate (94.1%), while the average retention rates of students 25-39 years old had the lowest retention rate (87.4%).

Course Retention Rates by Age: Crafton Hills College

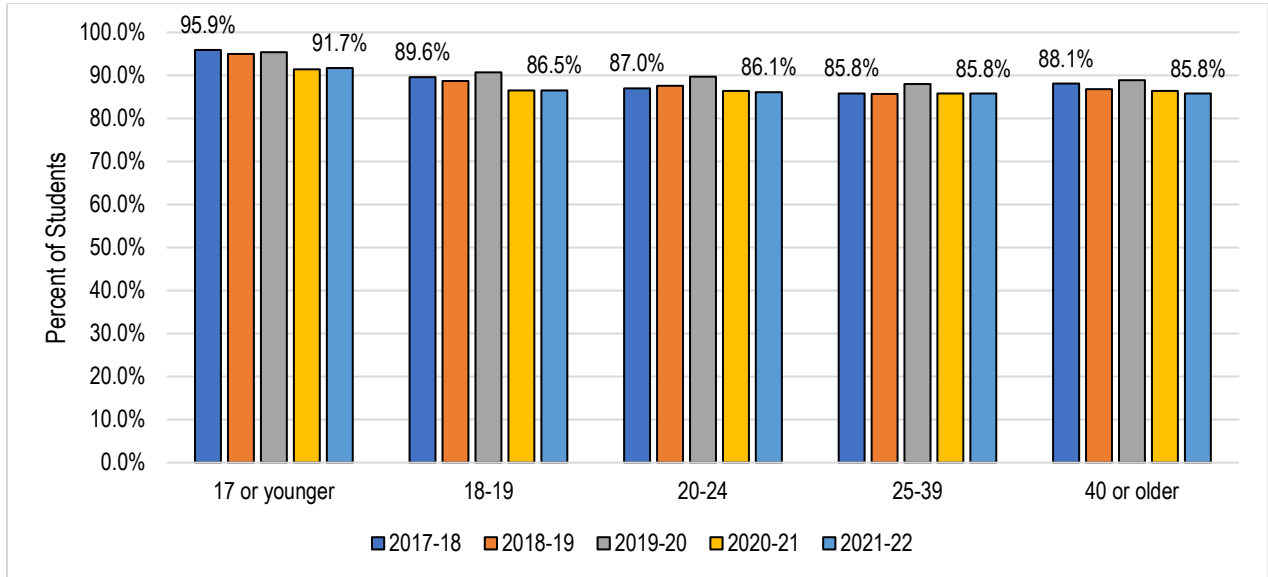


	2017-18	2018-19	2019-20	2020-21	2021-22	5 Year Change	5 Year Average
17 or younger	95.6%	92.5%	95.2%	94.0%	94.7%	-0.9%	94.4%
18-19	91.5%	91.8%	93.8%	91.9%	90.3%	-1.2%	91.9%
20-24	89.8%	90.5%	92.3%	90.4%	90.5%	+0.7%	90.7%
25-39	89.2%	89.6%	92.1%	89.4%	84.6%	-4.6%	88.2%
40 or older	89.5%	89.1%	92.0%	88.9%	91.1%	+1.6%	90.2%
Total Average	90.3%	90.7%	92.8%	90.7%	90.3%	0.0%	91.0%

Source: CCCC MIS Referential Data Files.

On average, between 2017-18 and 2021-22, students under 17 years old had the highest retention rate (94.4%), while students 25-39 years old had the lowest average retention rate (88.2%).

Course Retention Rates by Age: San Bernardino Valley College

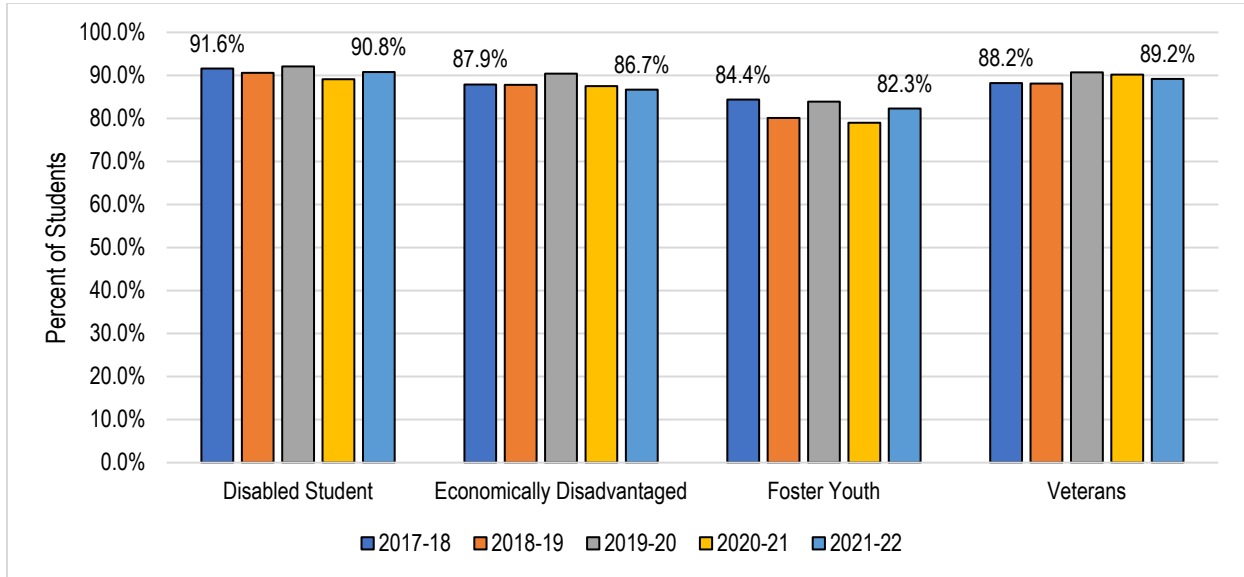


	2017-18	2018-19	2019-20	2020-21	2021-22	5 Year Change	5 Year Average
17 or younger	95.9%	95.0%	95.4%	91.4%	91.7%	-4.2%	94.0%
18-19	89.6%	88.7%	90.7%	86.5%	86.5%	-3.1%	88.5%
20-24	87.0%	87.6%	89.7%	86.4%	86.1%	-0.9%	87.4%
25-39	85.8%	85.7%	88.0%	85.8%	85.8%	0.0%	86.2%
40 or older	88.1%	86.8%	88.9%	86.4%	85.8%	-2.3%	87.3%
Total Average	87.5%	87.4%	89.6%	86.4%	85.9%	-1.6%	87.5%

Source: CCCC MIS Referential Data Files.

On average, between 2017-18 and 2021-22, students under 17 years old had the highest retention rate (94.9%), while students 25-39 years old had the lowest retention rate (86.2%).

Course Retention Rates by Special Population: SBCCD

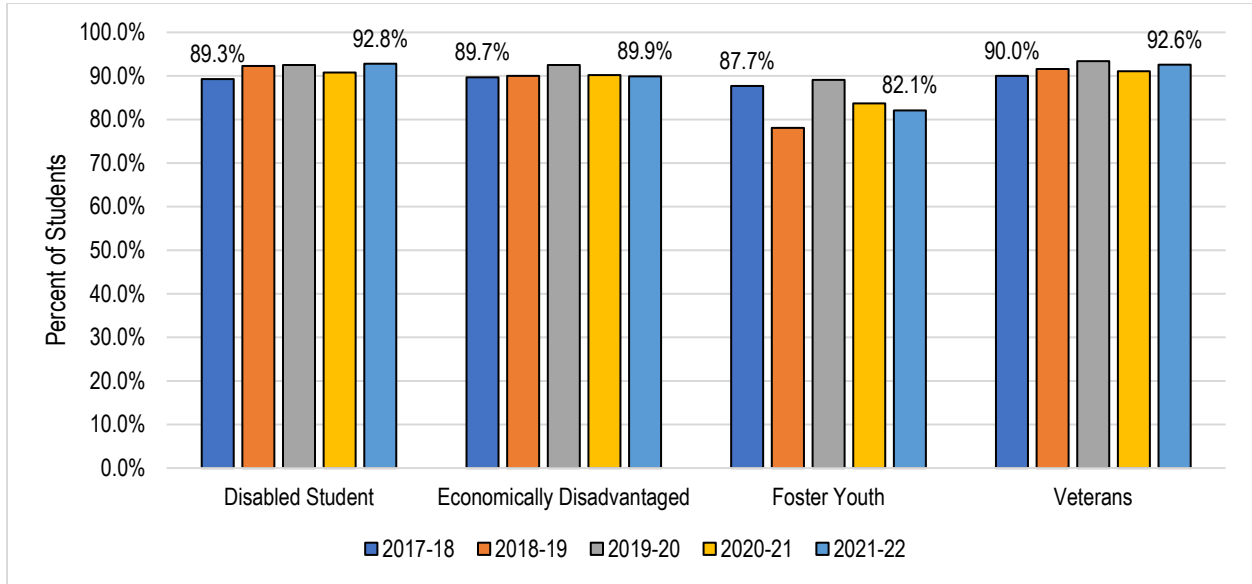


	2017-18	2018-19	2019-20	2020-21	2021-22	5 Year Change	5 Year Average
Disabled Student	91.6%	90.6%	92.1%	89.1%	90.8%	-0.8%	91.0%
Economically Disadvantaged	87.9%	87.8%	90.4%	87.5%	86.7%	-1.1%	88.3%
Foster Youth	84.4%	80.1%	83.9%	79.0%	82.3%	-2.1%	82.0%
Veterans	88.2%	88.1%	90.7%	90.2%	89.2%	+1.0%	89.2%
Total Average	88.4%	88.5%	90.7%	87.9%	87.4%	-1.0%	88.6%

Source: CCCC MIS Referential Data Files.

On average, between 2017-18 and 2021-22, students with disabilities had the highest retention rate (91.0%). The average retention rates of foster youth students (82.0%) and economically disadvantaged students (88.3%) were lower than the average retention rate for SBCCD (88.6%). Over this period, the retention rates of the foster youth and economically disadvantaged students declined by 2.1% and 1.1%, respectively.

Course Retention Rates by Special Population: Crafton Hills College

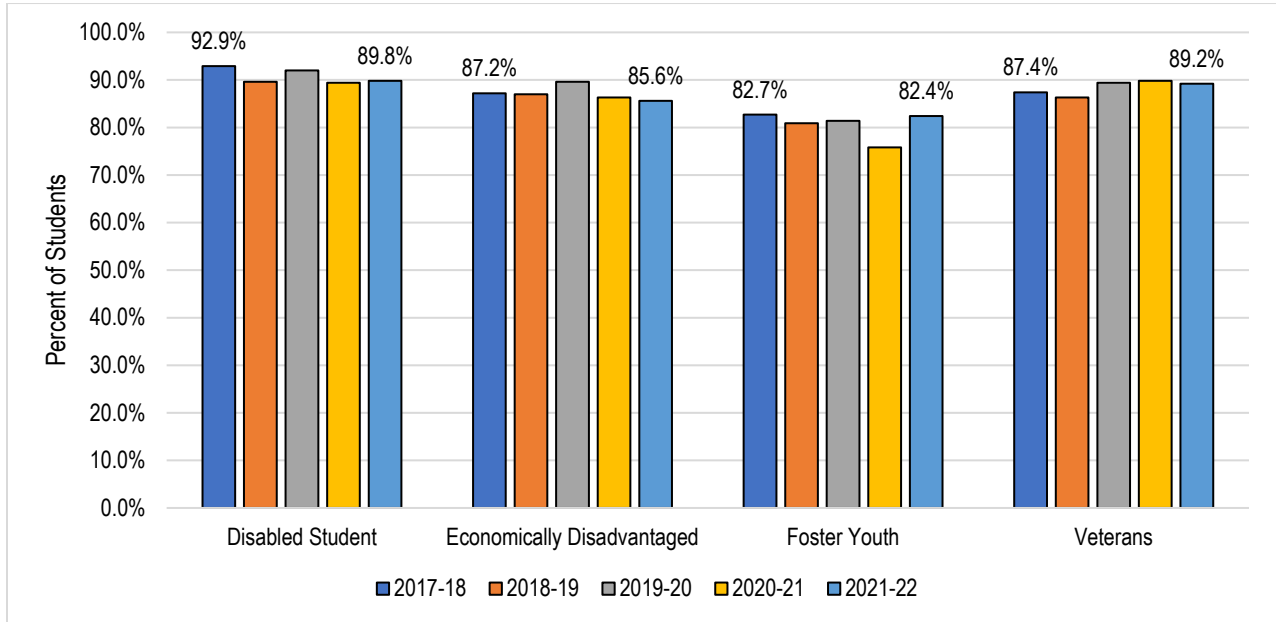


	2017-18	2018-19	2019-20	2020-21	2021-22	5 Year Change	5 Year Average
Disabled Student	89.3%	92.3%	92.5%	90.8%	92.8%	+3.5%	92.5%
Economically Disadvantaged	89.7%	90.0%	92.5%	90.2%	89.9%	+0.2%	90.5%
Foster Youth	87.7%	78.1%	89.1%	83.7%	82.1%	-5.6%	84.6%
Veterans	90.0%	91.6%	93.4%	91.1%	92.6%	+2.6%	91.7%
Total Average	90.3%	90.7%	92.8%	90.7%	90.3%	0.0%	91.0%

Source: CCCC MIS Referential Data Files.

On average, between 2017-18 and 2021-22, veteran students had the highest retention rate (91.0%). The average retention rates of foster youth students (84.6%) and economically disadvantaged students (90.5%) were lower than the average retention rate for Crafton Hills College (91.0%). Over this period, the retention rate of the foster youth students declined by 5.6%.

Course Retention Rates by Special Population: San Bernardino Valley College

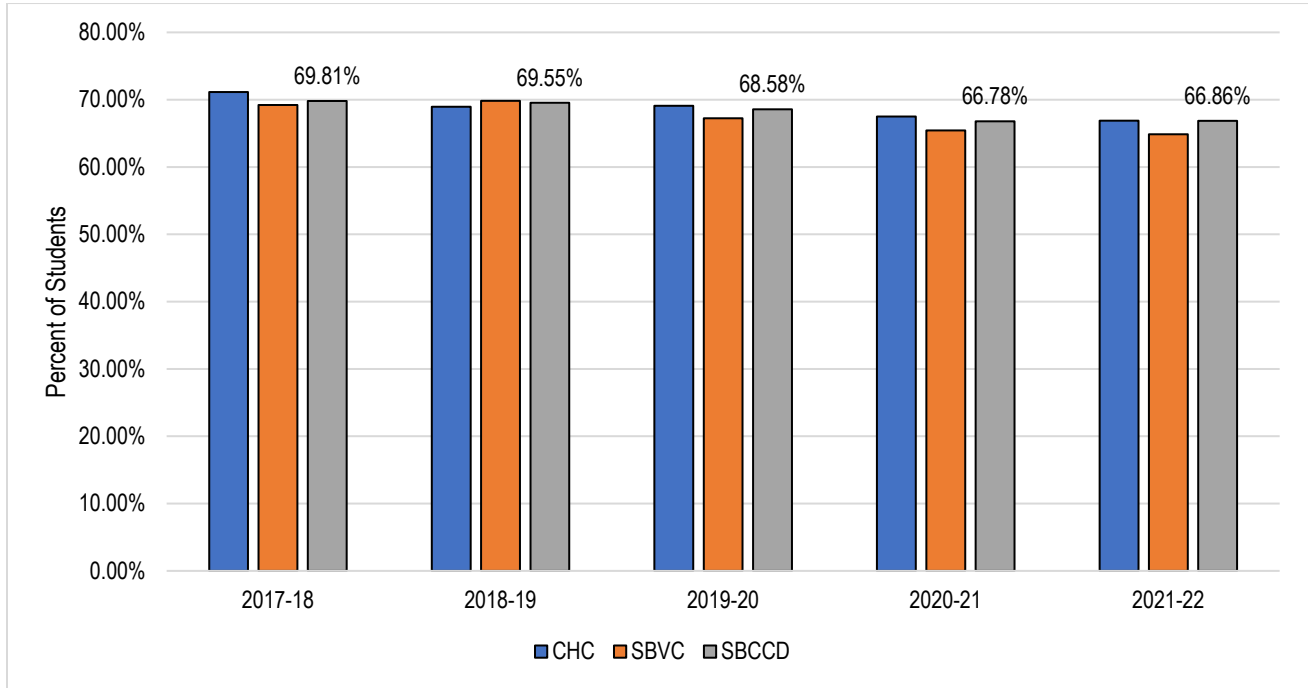


	2017-18	2018-19	2019-20	2020-21	2021-22	5 Year Change	5 Year Average
Disabled Student	92.9%	89.6%	92.0%	89.4%	89.8%	-3.1%	90.8%
Economically Disadvantaged	87.2%	87.0%	89.6%	86.3%	85.6%	-1.6%	87.3%
Foster Youth	82.7%	80.9%	81.4%	75.8%	82.4%	-0.3%	80.6%
Veterans	87.4%	86.3%	89.4%	89.8%	89.2%	+1.8%	88.3%
Total Average	87.5%	87.4%	89.6%	86.4%	85.9%	-1.6%	87.5%

Source: CCCC MIS Referential Data Files.

On average, between 2017-18 and 2021-22, students with disabilities had the highest average retention rate (90.8%). The average retention rates of foster youth students (80.6%) and economically disadvantaged students (87.3%) were lower than the average retention rate for San Bernardino Valley College (87.5%). Over this period, the retention rate of the students with disabilities declined by 3.1%.

Persistence Rate: Retained from Fall to Spring



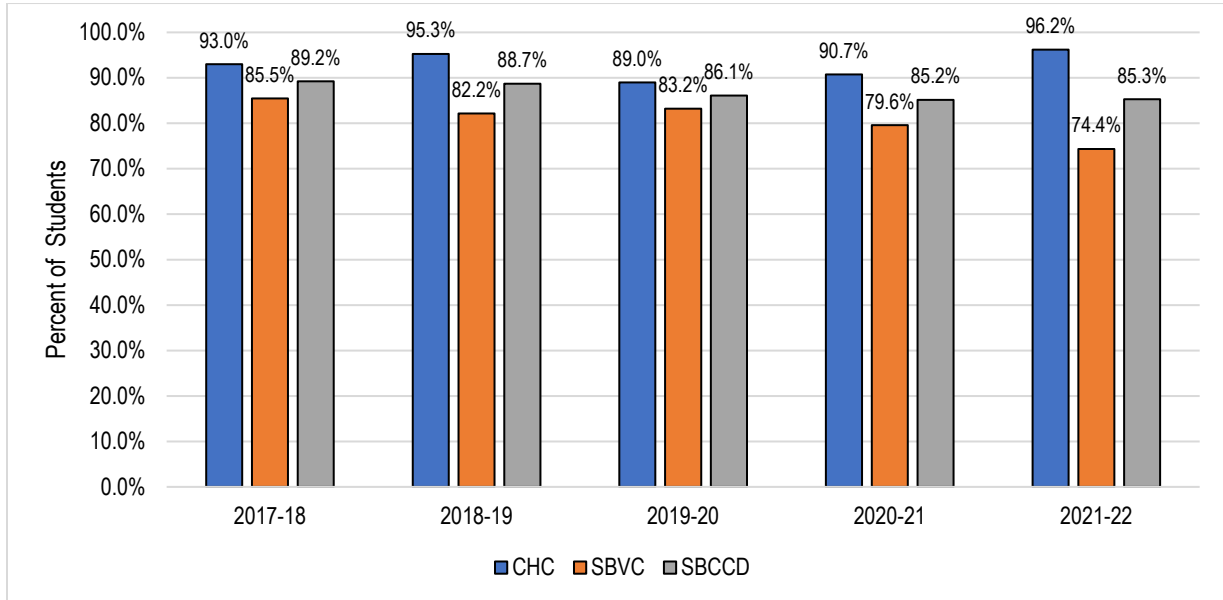
	2017-18	2018-19	2019-20	2020-21	2021-22	5 Year Change
Crafton Hills College	71.14%	68.94%	69.09%	67.50%	66.89%	-4.25%
San Bernardino Valley College	69.22%	69.84%	67.24%	65.44%	64.87%	-4.35%
SBCCD (Total)	69.81%	69.55%	68.58%	66.78%	66.86%	-2.95%

Source: SBCCD KPI Dashboard, KPI I.B

Definition: Number of students earning any grade in the initial Fall semester divided by the number of students who earned any grade in the subsequent Spring semester, excluding students who earned a degree or certificate and/or transferred to a four-year college or university.

The persistence rate of students from both colleges in the District decreased by 2.95 percentage points, from 69.81% in 2017-18 to 66.86% in 2021-22.

Licensure and Certification Pass Rates



	2017-18	2018-19	2019-20	2020-21	2021-22
Crafton Hills College	93.00%	95.25%	89.00%	90.73%	96.20%
San Bernardino Valley College	85.48%	82.17%	83.23%	79.59%	74.36%
SBCCD (Total)	89.24%	88.71%	86.12%	85.16%	85.28%

Source: SBCCD KPI Dashboard, KPI II.5

Between 2017-18 and 2021-22, the average licensure/certification pass rate is 86.90% during this five-year period, with a high of 89.24% in 2017-18 and a low of 85.16% in 2020-21.