



2024 Fact Book

Student Outcomes

Prepared by the SBCCD Office of Research,
Planning and Institutional Effectiveness

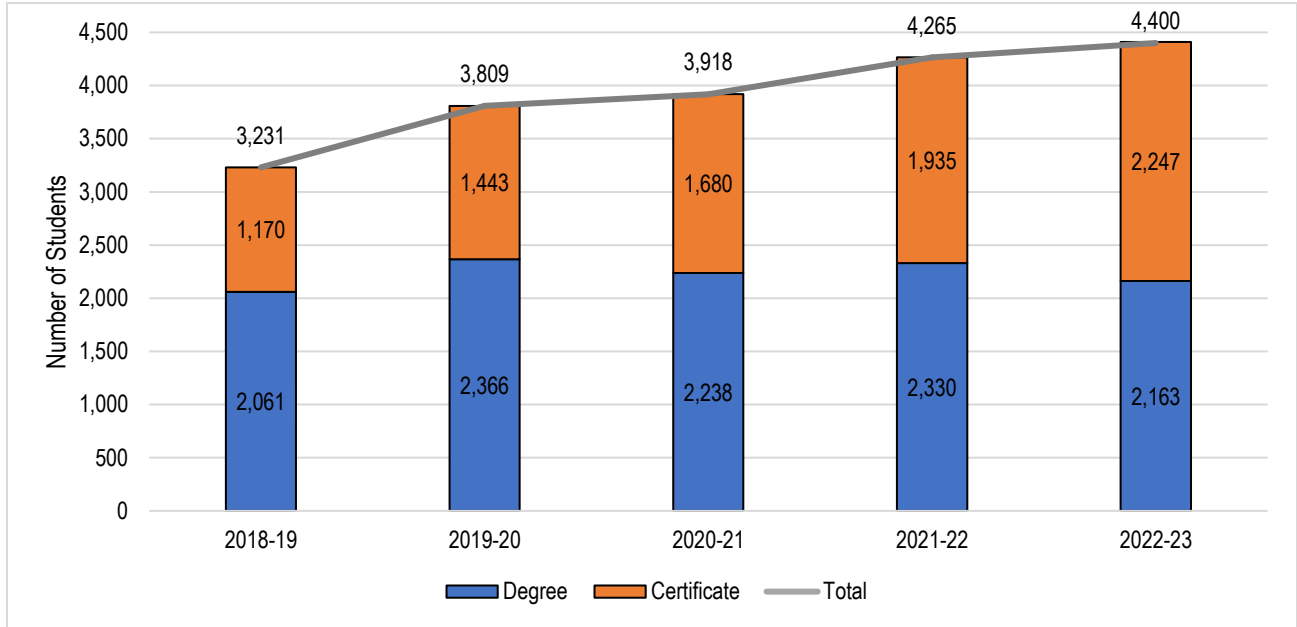
Table of Contents

Awards and Certificates: SBCCD.....	3
Awards and Certificates: Crafton Hills College	4
Awards and Certificates: San Bernardino Valley College	5
Awards and Certificates By Program, 2022-23: SBCCD	6
Awards and Certificates By Program, 2022-23: Crafton Hills College	7
Awards and Certificates By Program, 2022-23: San Bernardino Valley College	8
Annual Transfer Volume*, 2018-2019 through 2022-2023.....	9
Transfer Volume (CSU, UC, In-State, and Out-of-State): SBCCD	10
Transfer Volume (CSU, UC, In-State, and Out-of-State): Crafton Hills College.....	11
Transfer Volume (CSU, UC, In-State, and Out-of-State): San Bernardino Valley College.....	12
Top Ten Transfers to a Four-Year University: 2022-23	13
Course Success Rates	14
Course Success Rates by Gender: SBCCD.....	15
Course Success Rates by Gender: Crafton Hills College	16
Course Success Rates by Gender: San Bernardino Valley College	17
Course Success Rates by Race/Ethnicity: SBCCD.....	18
Course Success Rates by Race/Ethnicity: Crafton Hills College	19
Course Success Rates by Race/Ethnicity: San Bernardino Valley College	20
Course Success Rates by Age: SBCCD.....	21
Course Success Rates by Age: Crafton Hills College	22
Course Success Rates by Age: San Bernardino Valley College.....	23
Course Success Rates by Special Population: SBCCD	24
Course Success Rates by Special Population: Crafton Hills College.....	25
Course Success Rates by Special Population: San Bernardino Valley College	26
Course Retention Rates.....	27
Course Retention Rates by Gender: SBCCD	28
Course Retention Rates by Gender: Crafton Hills College.....	29
Course Retention Rates by Gender: San Bernardino Valley College.....	30
Course Retention Rates by Race/Ethnicity: SBCCD	31
Course Retention Rates by Race/Ethnicity: Crafton Hills College.....	32
Course Retention Rates by Race/Ethnicity: San Bernardino Valley College.....	33
Course Retention Rates by Age: SBCCD	34
Course Retention Rates by Age: Crafton Hills College.....	35

2024 Fact Book – Student Outcomes

Course Retention Rates by Age: San Bernardino Valley College 36
Course Retention Rates by Special Population: SBCCD 37
Course Retention Rates by Special Population: Crafton Hills College 38
Course Retention Rates by Special Population: San Bernardino Valley College..... 39
Persistence Rate: Retained from Fall to Spring 40
Licensure and Certification Pass Rates 41

Awards and Certificates: SBCCD

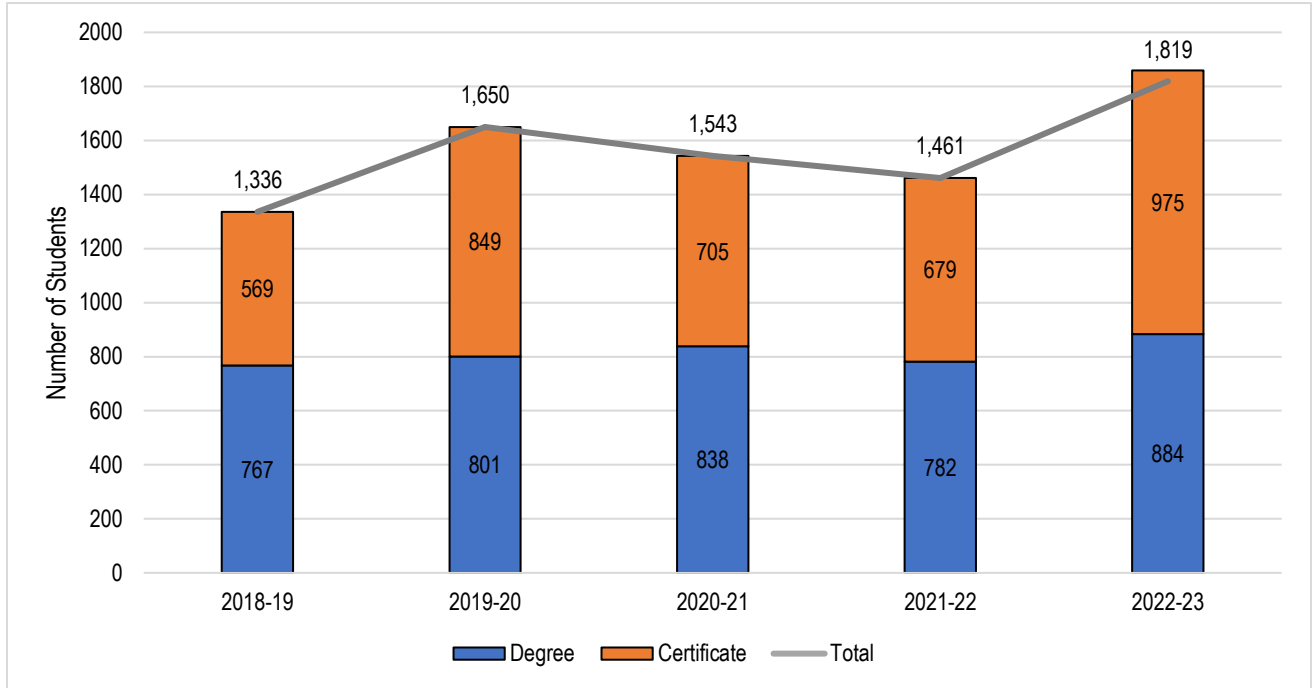


Total Headcount	2018-19	2019-20	2020-21	2021-22	2022-23	5 Year Change	5 Year Average
Degree	2,061	2,366	2,238	2,330	2,163	+9%	2,161
AA-T/AS-T	654	804	839	806	793	+30%	740
AA/AS Degree	1,407	1,562	1,399	1,524	1,370	0%	1,421
Certificate	1,170	1,443	1,680	1,935	2,247	+92%	1,695
Certificate 60 or more units	14	12	4	5	5	-64%	8
Certificate 30 to 59 units	767	944	817	817	1,056	+38%	880
Certificate 29 or fewer units	388	487	859	1,112	1,186	+206%	806
Noncredit Award	1						
Total	3,231	3,809	3,918	4,265	4,410	+36%	3,927

Source: CCCCO Data Mart: https://datamart.cccco.edu/Outcomes/Program_Awards.aspx

On average, between 2018-19 and 2022-23, 56.8% of total awards conferred were associate degrees and 43.2% were certificates. The number of associate degrees conferred in the last five academic years has increased 9%, from 2,061 in 2018-19 to 2,163 in 2022-23, and the number of certificates conferred has increased 92%, from 1,170 in 2018-19 to 2,247 in 2022-23.

Awards and Certificates: Crafton Hills College

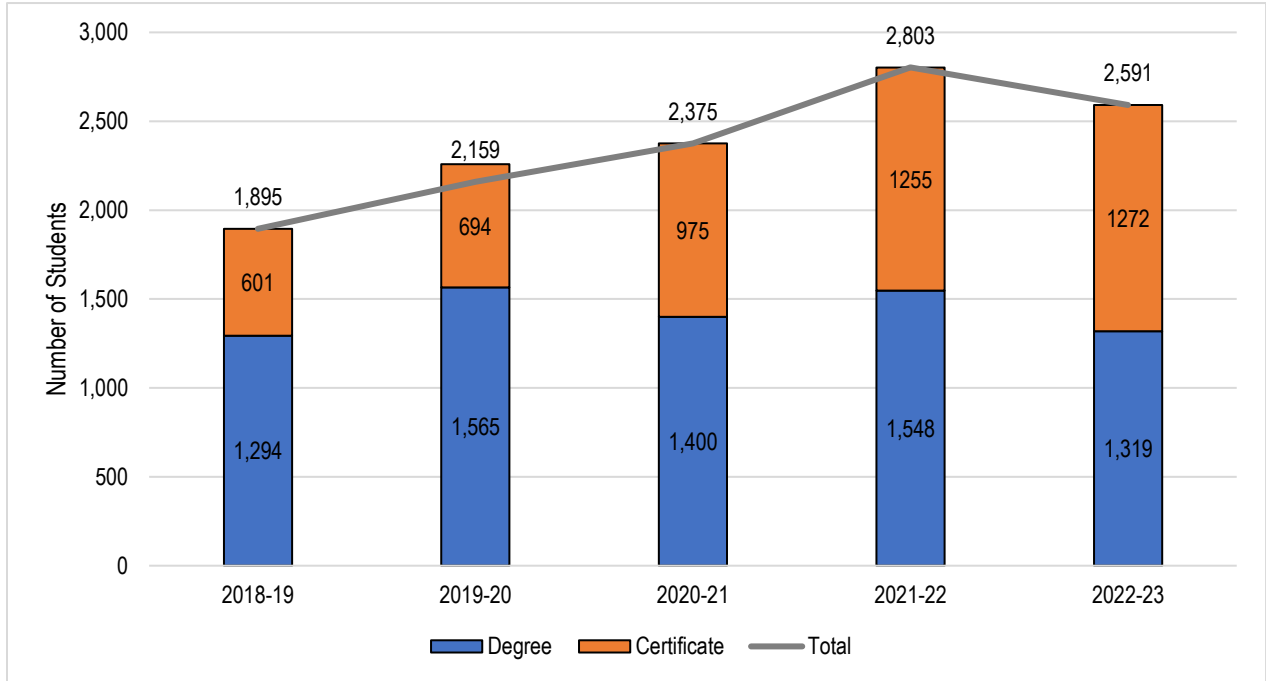


Total Headcount	2018-19	2019-20	2020-21	2021-22	2022-23	5 Year Change	5 Year Average
Degree	767	801	838	782	844	+10%	806
AA-T/AS-T	295	326	346	347	363	+23%	335
AA/AS Degree	472	475	492	435	481	+2%	471
Certificate	569	849	705	679	975	+71%	755
Certificate 60 or more units	8	7	0	0	0	-100%	3
Certificate 30 to 59 units	281	484	466	463	548	+95%	448
Certificate 29 or fewer units	280	358	239	216	427	+53%	304
Total	1,336	1,650	1,543	1,461	1,819	+36%	1,562

Source: CCCC Data Mart: https://datamart.cccc.edu/Outcomes/Program_Awards.aspx

On average, between 2018-19 and 2022-23, 51.6% of total awards conferred at Crafton Hills College were associate degrees and 48.4% were certificates. Over this period, the number of associate degrees conferred has increased 10%, from 767 in 2018-19 to 844 in 2022-23, and the number of certificates conferred has increased 71%, from 569 in 2018-19 to 975 in 2022-23.

Awards and Certificates: San Bernardino Valley College

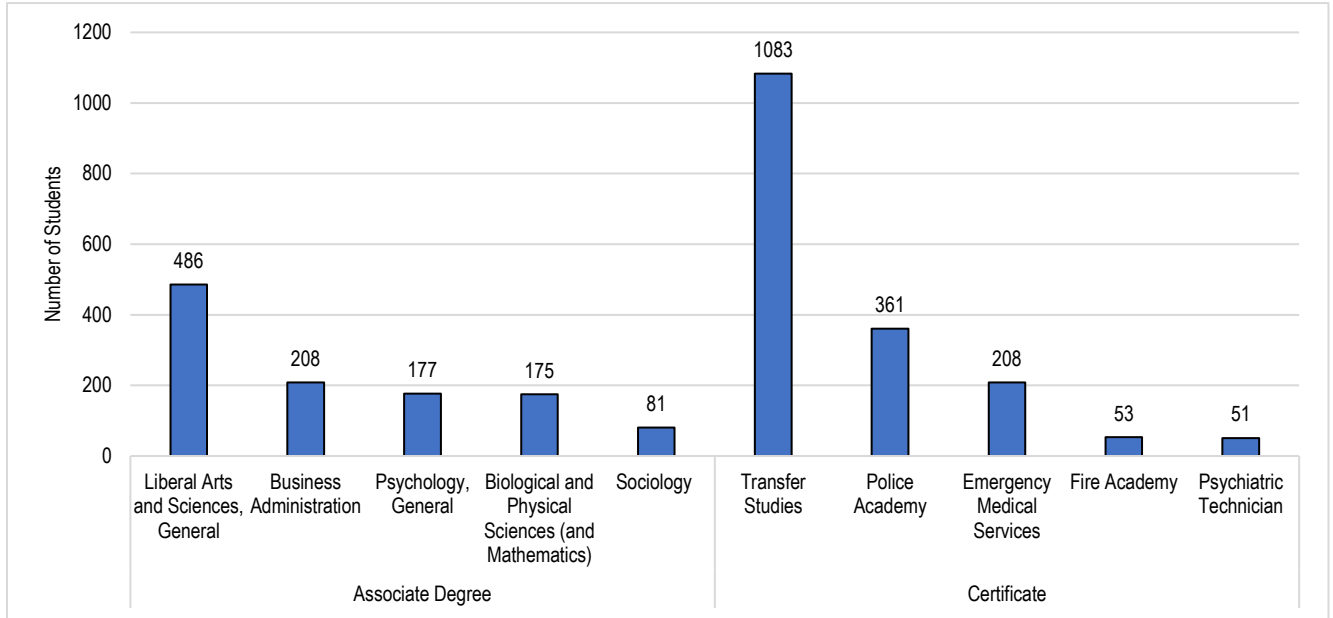


Total Headcount	2018-19	2019-20	2020-21	2021-22	2022-23	5 Year Change	5 Year Average
Degree	1,294	1,565	1,400	1,548	1,319	+10%	806
AA-T/AS-T	359	478	493	459	430	+23%	335
AA/AS Degree	935	1,087	907	1,089	889	+2%	471
Certificate	601	594	975	1,255	1,272	+112%	939
Certificate 60 or more units	6	5	4	4	5	-17%	5
Certificate 30 to 59 units	486	460	351	355	508	+5%	432
Certificate 29 or fewer units	108	129	620	896	759	+596%	503
Noncredit Award	1	0	0	0	0		
Total	1,895	2,159	2,375	2,803	2,591	+37%	2,365

Source: CCCCO Data Mart: https://datamart.cccco.edu/Outcomes/Program_Awards.aspx

On average, between 2018-19 and 2022-23, 60.3% of total awards conferred at SBVC were associate degrees and 39.7% were certificates. Over this period, the number of associate degrees conferred has increased 10%, from 1,294 in 2018-19 to 1,319 in 2022-23, and the number of certificates conferred has increased 112%, from 601 in 2018-19 to 1,272 in 2022-23.

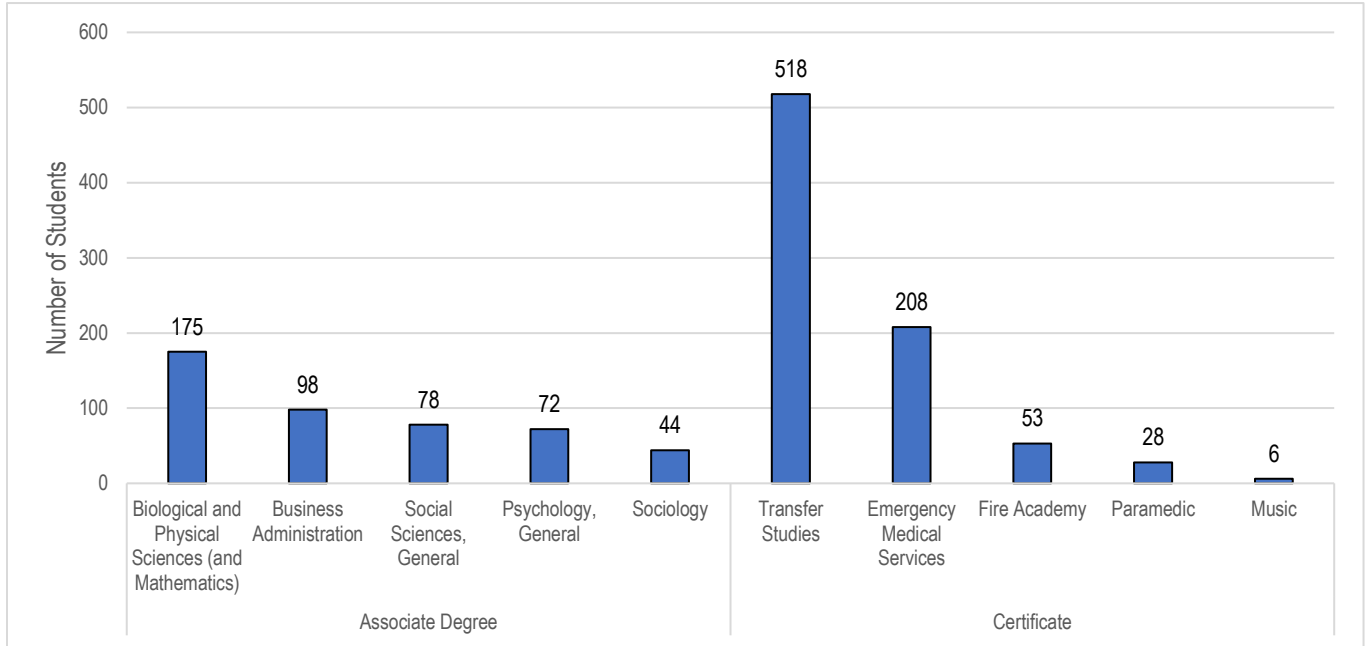
Awards and Certificates By Program, 2022-23: SBCCD



Rank	Associate Degree Top Program	Count (N=2,163)	Percent
1	Liberal Arts and Sciences, General	486	22.5%
2	Business Administration	208	9.6%
3	Psychology, General	177	8.2%
4	Biological and Physical Sciences (and Mathematics)	175	8.1%
5	Sociology	81	3.7%
6	Registered Nursing	80	3.7%
7	Social Sciences, General	78	3.6%
8	Administration of Justice	55	2.5%
9	Accounting	45	2.1%
10	History	44	2.0%
11	Art	40	1.8%
12	English	38	1.8%
13	Preschool Age Children	32	1.5%
14	Fire Technology	31	1.4%
15	Kinesiology	29	1.3%

Rank	Certificate Top Program	Count (N=2,247)	Percent
1	Transfer Studies	1083	48.2%
2	Police Academy	361	16.1%
3	Emergency Medical Services	208	9.3%
4	Fire Academy	53	2.4%
5	Psychiatric Technician	51	2.3%
6	Accounting	31	1.4%
6	Health Information Coding	31	1.4%
8	Paramedic	28	1.2%
9	Alcohol and Controlled Substances	23	1.0%
10	Electrical Systems and Power Transmission	17	0.8%
10	Preschool Age Children	17	0.8%
12	Automotive Collision Repair	13	0.6%
13	Diesel Technology	11	0.5%
14	Pharmacy Technology	10	0.4%
15	Radio and Television	9	0.4%

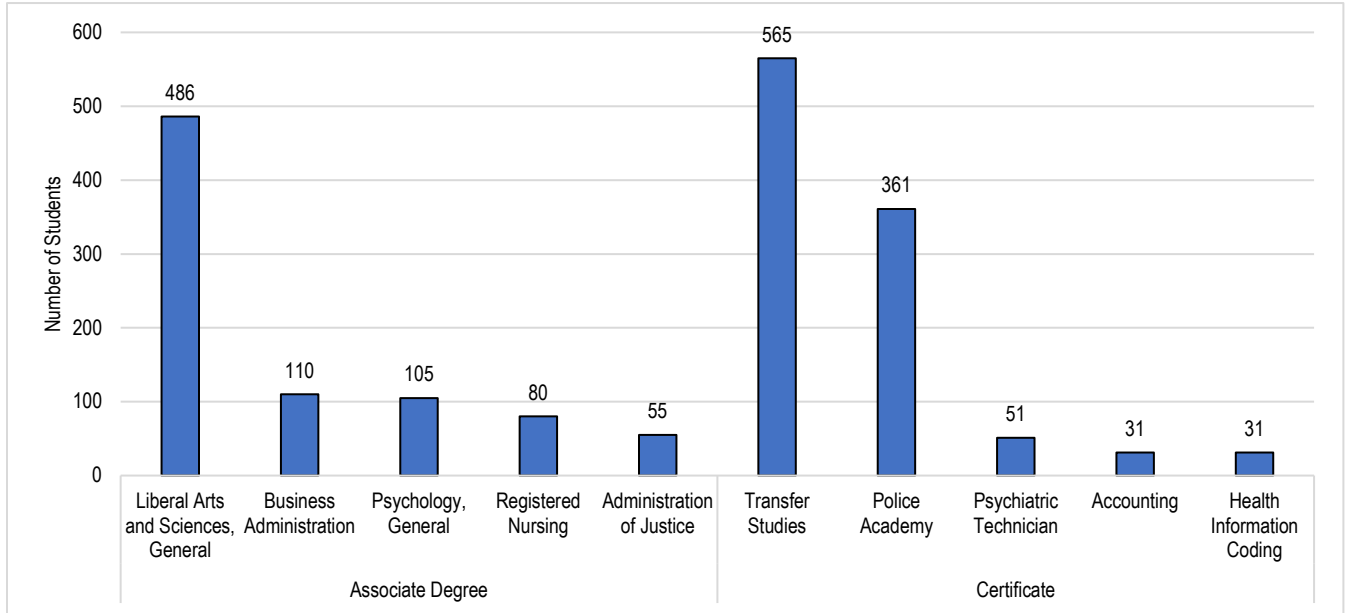
Awards and Certificates By Program, 2022-23: Crafton Hills College



Rank	Associate Degree Top Program	Count (N=844)	Percent
1	Biological and Physical Sciences (and Mathematics)	175	20.7%
2	Business Administration	98	11.6%
3	Social Sciences, General	78	9.2%
4	Psychology, General	72	8.5%
5	Sociology	44	5.2%
6	Fire Technology	31	3.7%
7	History	28	3.3%
8	English	23	2.7%
9	Art	21	2.5%
10	Biology, General	20	2.4%
10	Respiratory Care/Therapy	20	2.4%
12	Mathematics, General	19	2.3%
13	Computer Science (Transfer	18	2.1%
14	Business Management	17	2.0%
15	Speech Communication	16	1.9%

Rank	Certificate Top Program	Count (N=975)	Percent
1	Transfer Studies	518	53.1%
2	Emergency Medical Services	208	21.3%
3	Fire Academy	53	5.4%
4	Paramedic	28	2.9%
5	Music	6	0.6%
6	Sign Language	5	0.5%
6	Computer Information System	5	0.5%
8	Child Development/Early Care and Education	3	0.4%

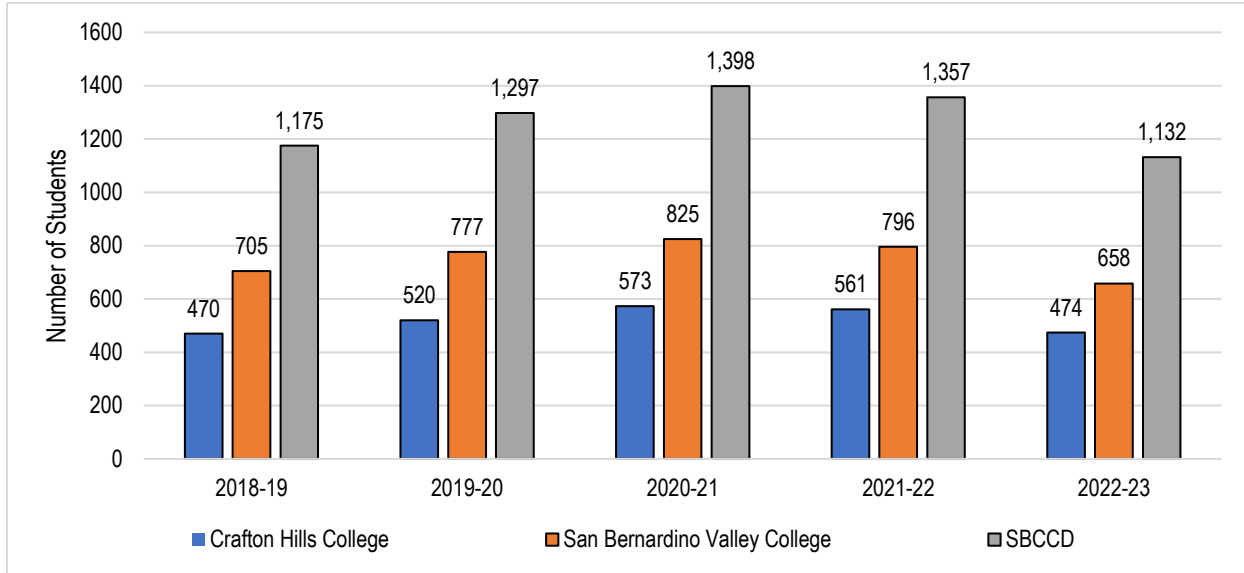
Awards and Certificates By Program, 2022-23: San Bernardino Valley College



Rank	Associate Degree Top Program	Count (N=1,319)	Percent
1	Liberal Arts and Sciences, General	486	36.8%
2	Business Administration	110	8.3%
3	Psychology, General	105	8.0%
4	Registered Nursing	80	6.1%
5	Administration of Justice	55	4.2%
6	Accounting	40	3.0%
7	Sociology	37	2.8%
8	Preschool Age Children	32	2.4%
9	Psychiatric Technician	27	2.0%
10	Human Services	24	1.8%
11	Child Development/Early Care and Education	22	1.7%
12	Art	19	1.4%
12	Kinesiology	19	1.4%
14	History	16	1.2%
14	Pharmacy Technology	16	1.2%

Rank	Certificate Top Program	Count (N=1,272)	Percent
1	Transfer Studies	565	44.4%
2	Police Academy	361	28.4%
3	Psychiatric Technician	51	4.0%
4	Accounting	31	2.4%
4	Health Information Coding	31	2.4%
6	Alcohol and Controlled Substances	23	1.8%
7	Electrical Systems and Power Transmission	17	1.3%
7	Preschool Age Children	17	1.3%
9	Automotive Collision Repair	13	1.0%
10	Diesel Technology	11	0.9%
11	Pharmacy Technology	10	0.8%
12	Radio and Television-Office	9	0.7%
13	Technology/Office Computer Applications	8	0.6%
13	Real Estate	8	0.6%
15	Administration of Justice	7	0.6%
15	Culinary Arts	7	0.6%

Annual Transfer Volume*, 2018-2019 through 2022-2023



	2018-19	2019-20	2020-21	2021-22	2022-23	5 Year Change	5 Year Average
Crafton Hills College	470	520	573	561	474	+0.9%	520
San Bernardino Valley College	705	777	825	796	658	-6.7%	752
SBCCD (Total)	1,175	1,297	1,398	1,357	1,132	-3.7%	1,272

Note: * Total number of Students Transferring to UC, CSU, out-of-state, and state private institutions

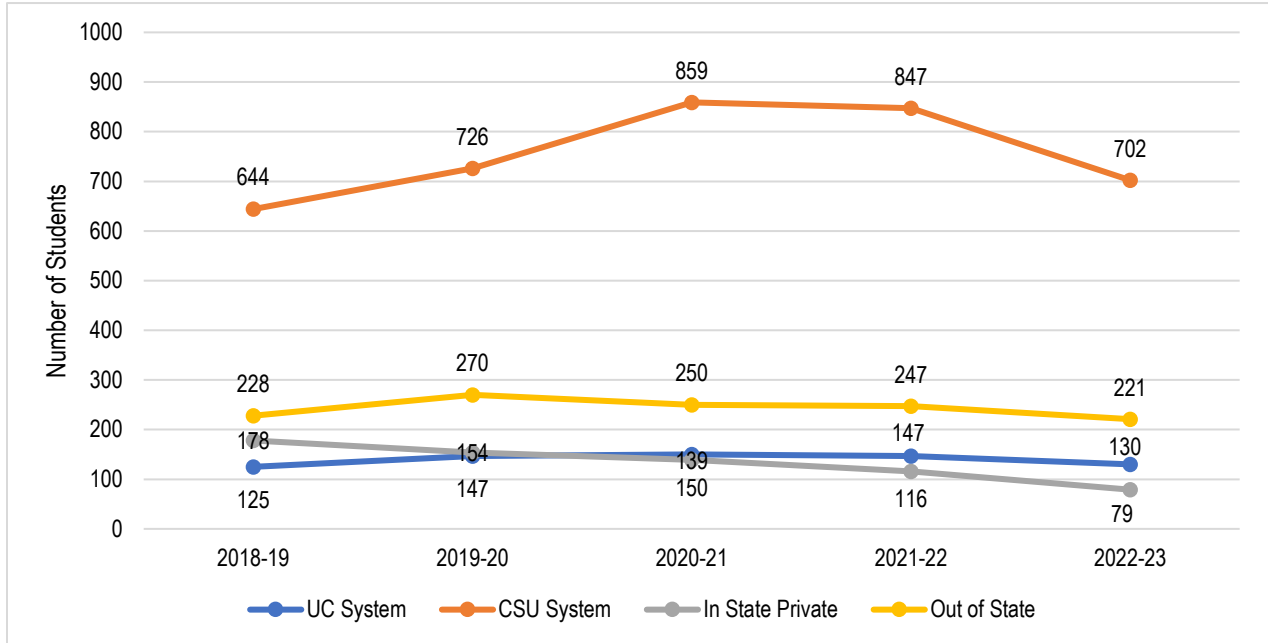
Sources: 1. Datamart Transfer Volume to In-State Private (ISP) and Out-of-State (OOS)

2. Volume of transfers to UC: <https://www.universityofcalifornia.edu/infocenter/admissions-source-school>

3. Volume of transfers to CSU: <https://www.calstate.edu/data-center/institutional-research-analyses/Pages/reports-and-analytics.aspx>

Between 2018-19 and 2022-23, the annual transfer volume for SBCCD declined by 3.7%, from 1,175 in 2018-19 to 1,132 in 2022-23, with a five-year average of 1,272.

Transfer Volume (CSU, UC, In-State, and Out-of-State): SBCCD



	2018-19		2019-20		2020-21		2021-22		2022-23		5 Year Change	5 Year Average
UC System	125	11%	147	11%	150	11%	147	11%	130	11%	+4.0%	140
CSU System	644	55%	726	56%	859	61%	847	62%	702	62%	+9.0%	756
In State Private	178	15%	154	12%	139	10%	116	9%	79	7%	-55.6%	133
Out of State	228	19%	270	21%	250	18%	247	18%	221	20%	-3.1%	243
Total	1,175	100%	1,297	100%	1,398	100%	1,357	100%	1,132	100%	-3.7%	1,272

Sources: 1. Datamart Transfer Volume to In-State Private (ISP) and Out-of-State (OOS)

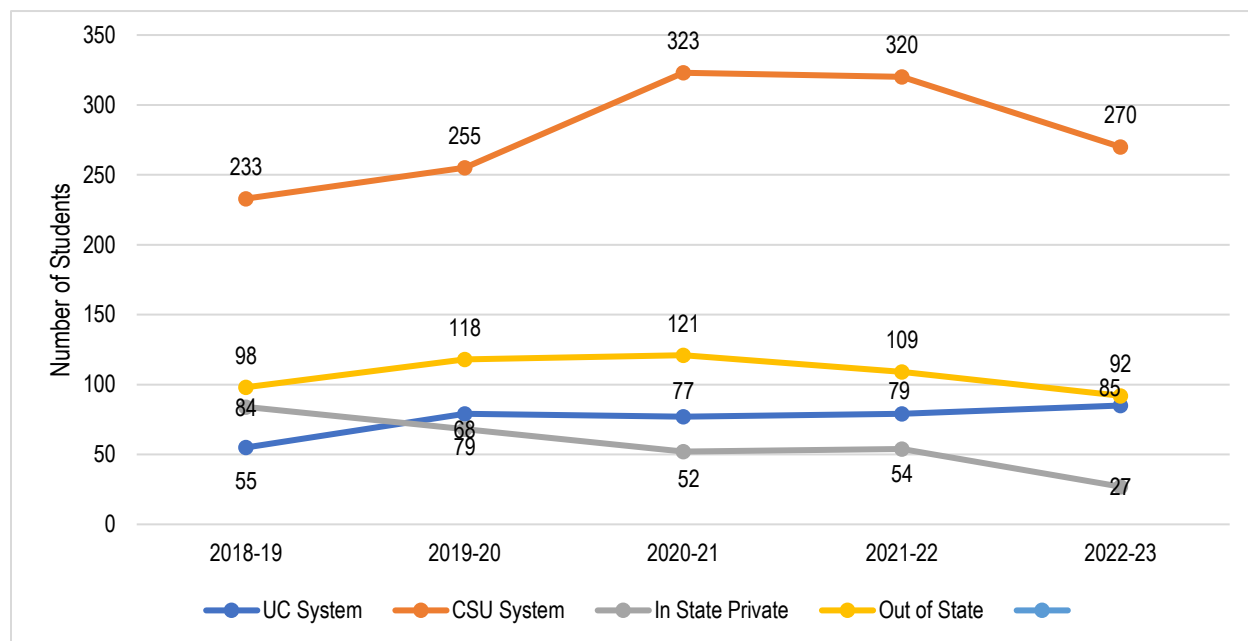
2. Volume of transfers to UC: <https://www.universityofcalifornia.edu/infocenter/admissions-source-school>

3. Volume of transfers to CSU: <https://www.calstate.edu/data-center/institutional-research-analyses/Pages/reports-and-analytics.aspx>

Between 2018-19 and 2022-23, the annual transfer volume for SBCCD declined by 3.7%, from 1,175 in 2018-19 to 1,132 in 2022-23, with a five-year average of 1,272. Transfer volume increased to the CSU system (+9.0%) and the UC system (+4%), while there was a decrease in transfer volume to in state private institutions (-55.6%) and out-of-state institutions (-3.1%).

Over this period, of total students who transferred from both colleges in the District, on average, 59.4% transferred to the California State University (CSU), followed by students who transferred to out-of-state institutions (19.1%), the University of California System (11.0%), and in-state private institutions (10.5%).

Transfer Volume (CSU, UC, In-State, and Out-of-State): Crafton Hills College



	2018-19		2019-20		2020-21		2021-22		2022-23		5 Year Change	5 Year Average
UC System	55	12%	79	15%	77	13%	78	14%	85	18%	+54.5%	75
CSU System	233	50%	255	49%	323	56%	320	57%	270	57%	+15.9%	280
In State Private	84	18%	68	13%	52	9%	54	10%	27	6%	-67.9%	57
Out of State	98	21%	118	23%	121	21%	109	19%	92	19%	-6.1%	108
Total	470	100%	520	100%	573	100%	561	100%	474	100%	+0.9%	520

Sources: 1. Datamart Transfer Volume to In-State Private (ISP) and Out-of-State (OOS)

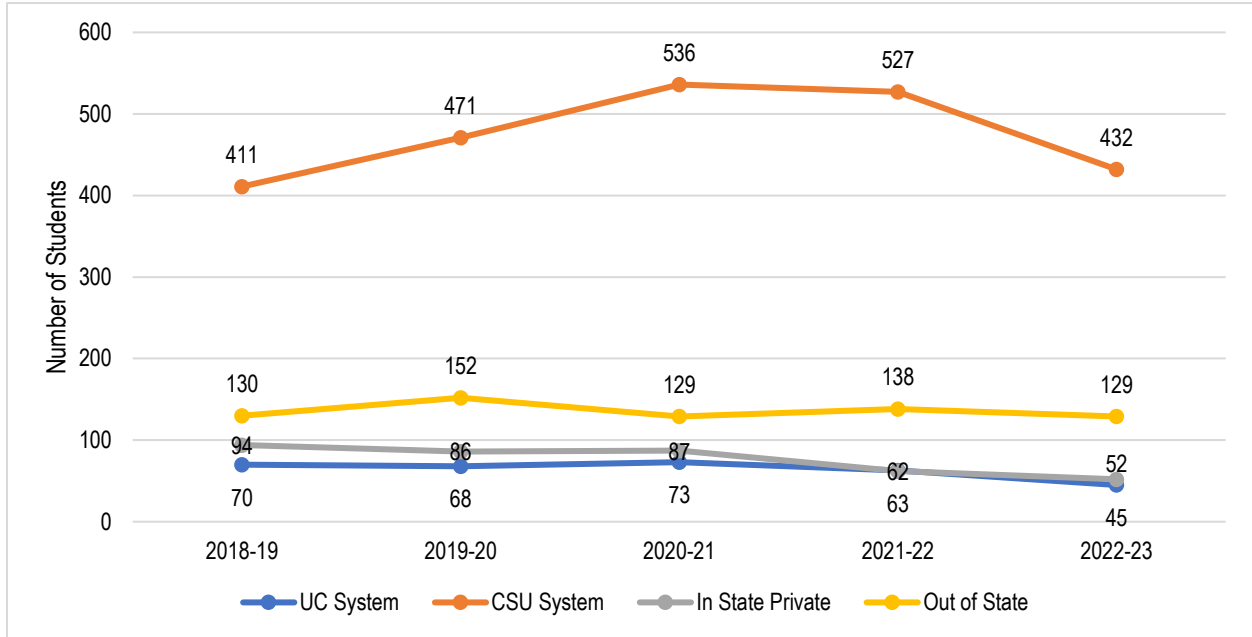
2. Volume of transfers to UC: <https://www.universityofcalifornia.edu/infocenter/admissions-source-school>

3. Volume of transfers to CSU <https://www.calstate.edu/data-center/institutional-research-analyses/Pages/reports-and-analytics.aspx>

Between 2018-19 and 2022-23, the annual transfer volume for Crafton Hills College increased by 0.9%, from 470 in 2018-19 to 474 in 2022-23, with a five-year average of 520. Transfer volume increased to the UC system (+54.5%) and the CSU system (+15.9%), while there was a decrease in transfer volume to in state private institutions (-67.9%) and out-of-state institutions (-6.1%).

Over this period, of total students who transferred, on average, 53.9% transferred to the California State University (CSU), followed by students who transferred to out-of-state institutions (20.7%), the University of California System (14.4%), and in-state private institutions (11.0%).

Transfer Volume (CSU, UC, In-State, and Out-of-State): San Bernardino Valley College



	2018-19		2019-20		2020-21		2021-22		2022-23		5 Year Change	5 Year Average
UC System	70	10%	68	9%	73	9%	69	9%	45	7%	-35.7%	65
CSU System	411	58%	471	61%	536	65%	527	66%	432	66%	+5.1%	475
In State Private	94	13%	86	11%	87	11%	62	8%	52	8%	-44.7%	76
Out of State	130	18%	152	20%	129	16%	138	17%	129	20%	-0.8%	136
Total	705	100%	777	100%	825	100%	796	100%	658	100%	-6.7%	752

Sources: 1. Datamart Transfer Volume to In-State Private (ISP) and Out-of-State (OOS)
 2. Volume of transfers to UC: <https://www.universityofcalifornia.edu/infocenter/admissions-source-school>
 3. Volume of transfers to CSU: <https://www.calstate.edu/data-center/institutional-research-analyses/Pages/reports-and-analytics.aspx>

Between 2018-19 and 2022-23, the annual transfer volume for San Bernardino Valley College declined by 6.7%, from 705 in 2018-19 to 658 in 2022-23, with a five-year average of 752. Transfer volume increased to the CSU system (+5.1%) while there was a decrease in transfer volume to in state private institutions (-44.7%), the UC system (-35.7%), and out-of-state institutions (-0.8%).

Over this period, of total students who transferred, on average, 63.2% transferred to the California State University (CSU), followed by students who transferred to out-of-state institutions (18.0%), in-state private institutions (10.1%), and the University of California System (8.6%).

Top Ten Transfers to a Four-Year University: 2022-23

SBCCD

Ranking	University	Students (N=1,132)	Percent
1	CSU-San Bernardino	519	45.8%
2	UCR	63	5.6%
3	CSU-Pomona	52	4.6%
4	CSU-Fullerton	40	3.5%
5	Southern New Hampshire University	28	2.5%
6	California Baptist University	23	2.0%
7	Grand Canyon University	21	1.9%
8	University Of Phoenix-Arizona	20	1.8%
9	CSU-Los Angeles	19	1.7%
10	UCLA	15	1.3%
10	West Coast University	15	1.3%

Crafton Hills College

Ranking	University	Students (N=474)	Percent
1	CSU-San Bernardino	185	39.0%
2	UCR	43	9.1%
3	CSU-Fullerton	26	5.5%
4	CSU Pomona	18	3.8%
5	UCLA	12	2.5%
5	California Baptist University	10	2.1%
7	UCI	9	1.9%
8	Western Governors University	9	1.9%
9	Southern New Hampshire University	8	1.7%
9	UCSD	7	1.5%
9	CSU-Long Beach	7	1.5%

San Bernardino Valley College

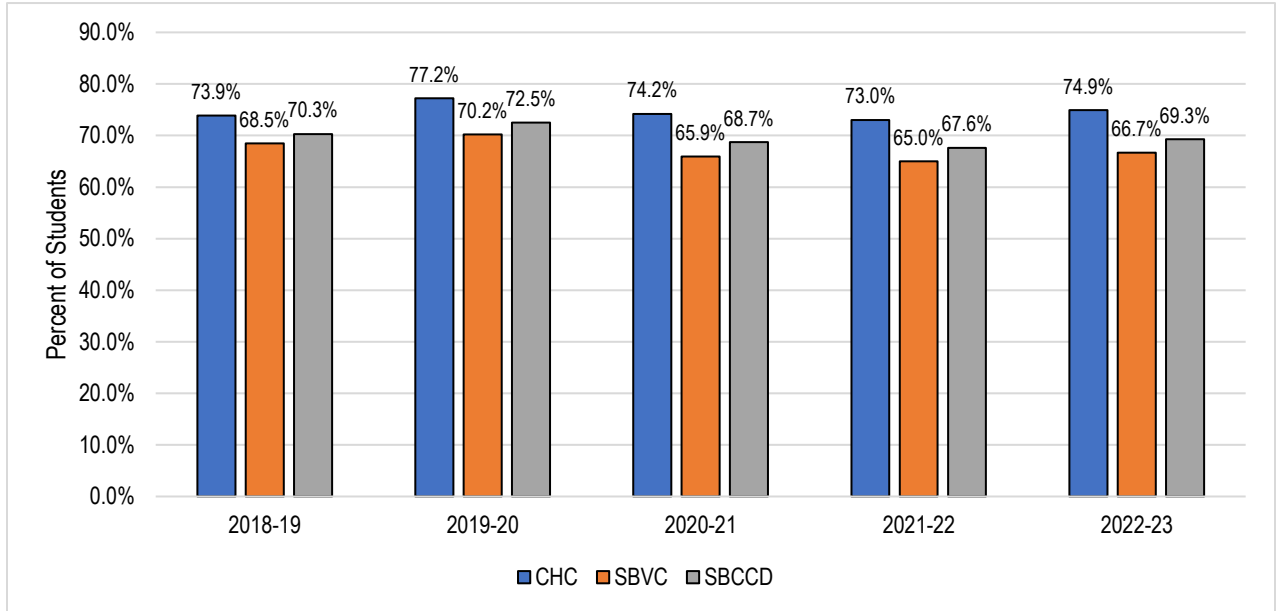
Ranking	University	Students (N=658)	Percent
1	CSU-San Bernardino	334	50.8%
2	CSU-Pomona	34	5.2%
3	UC Riverside	32	4.9%
4	Southern New Hampshire University	20	3.0%
5	CSU-Los Angeles	16	2.4%
5	Grand Canyon University	16	2.4%
7	CSU-Fullerton	14	2.1%
7	California Baptist University	13	2.0%
9	University Of Phoenix-Arizona	13	2.0%
10	West Coast University-Ontario	11	1.7%

Sources: 1. Datamart Transfer Volume to In-State Private (ISP) and Out-of-State (OOS)

2. Volume of transfers to UC: <https://www.universityofcalifornia.edu/infocenter/admissions-source-school>

3. Volume of transfers to CSU <https://www.calstate.edu/data-center/institutional-research-analyses/Pages/enrollment.aspx>

Course Success Rates



	2018-19	2019-20	2020-21	2021-22	2022-23	5 Year Change	5 Year Average
Crafton Hills College	73.9%	77.2%	74.2%	73.0%	74.9%	+1.0%	74.7%
San Bernardino Valley College	68.5%	70.2%	65.9%	65.0%	66.7%	-1.8%	67.4%
San Bernardino CCD	70.3%	72.5%	68.7%	67.6%	69.3%	-1.0%	69.8%

Source: CCCC MIS Referential Data Files.

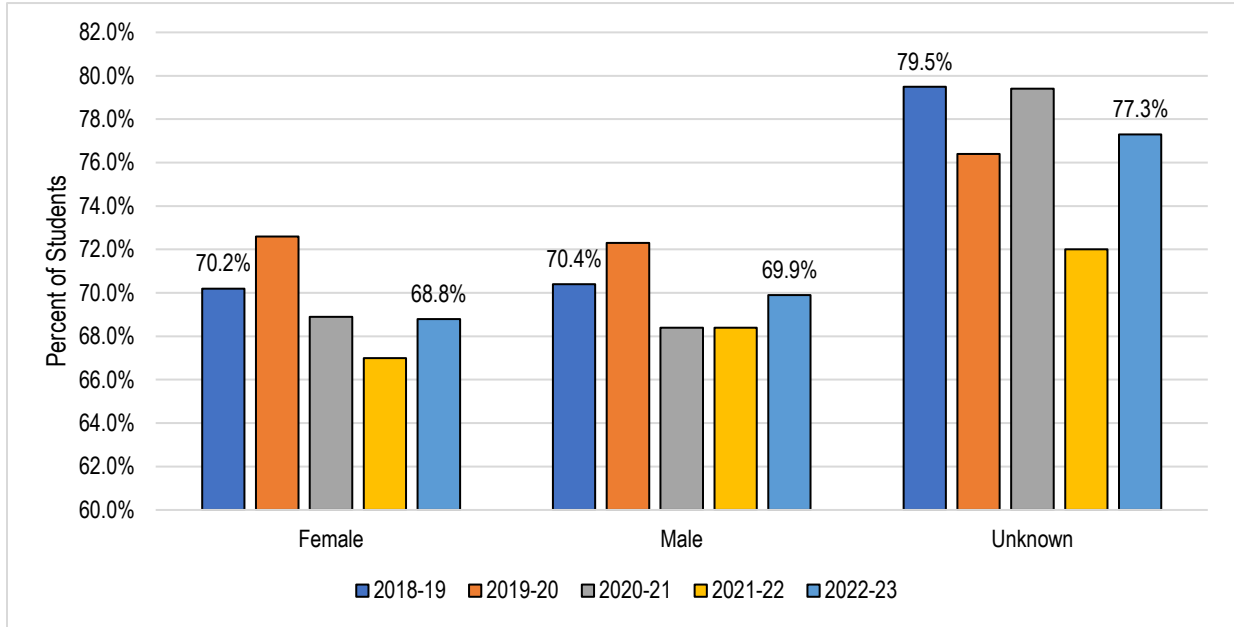
Success Rate = (A, B, C, P, IA, IB, IC, and IPP Grades / A, B, C, D, F, P, NP, I*, IPP, INP, FW, and W Grades) * 100

Note that Excused withdrawal "EW" occurs when a student is permitted to withdraw from a course(s) due to COVID-19 crisis.

This grade is not counted as an enrollment attempt.

Between 2018-19 and 2022-23, the annual success rate of students from both colleges in the District declined by 1.0 percent points, from 70.3% in 2018-19 to 69.3% in 2022-23, with a five-year average of 69.8%.

Course Success Rates by Gender: SBCCD

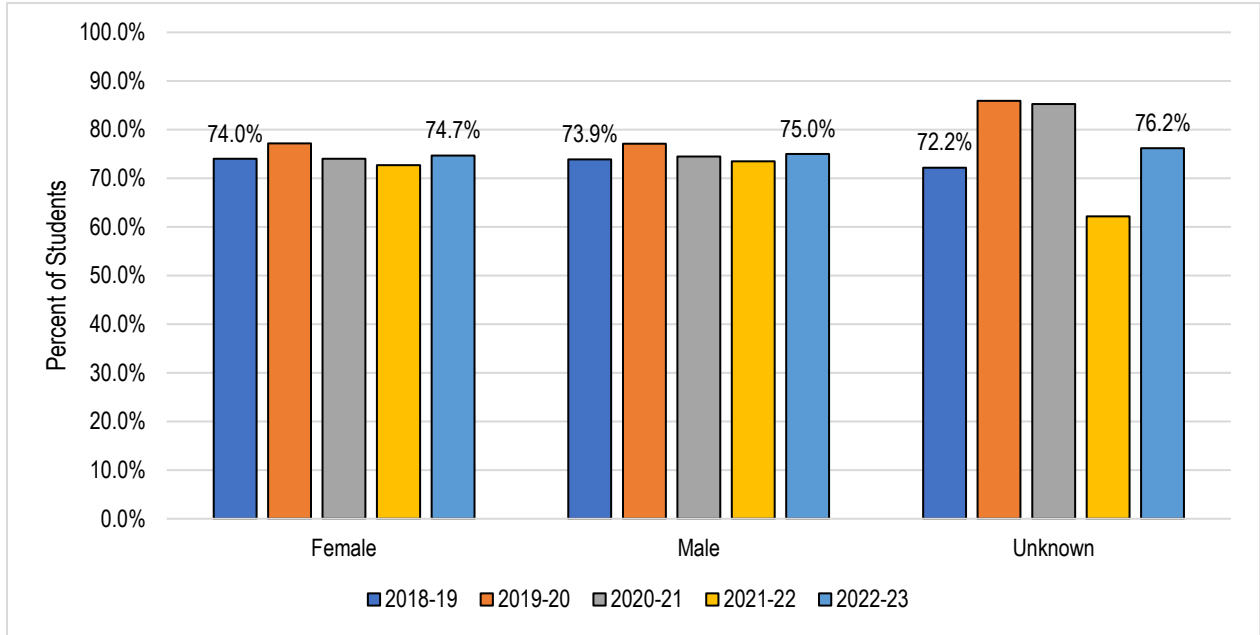


	2018-19	2019-20	2020-21	2021-22	2022-23	5 Year Change	5 Year Average
Female	70.2%	72.6%	68.9%	67.0%	68.8%	-1.4%	69.7%
Male	70.4%	72.3%	68.4%	68.4%	69.9%	-0.5%	70.0%
Unknown	79.5%	76.4%	79.4%	72.0%	77.3%	-2.2%	77.1%
Total	70.3%	72.5%	68.7%	67.6%	69.3%	-1.0%	69.8%

Source: CCCC MIS Referential Data Files.

On average, between 2018-19 and 2022-23, male students had a slightly higher success rate than female students (70.0% vs 69.7%, respectively). Over this period, the success rates for female and male students declined by 1.4% and 0.5%, respectively.

Course Success Rates by Gender: Crafton Hills College

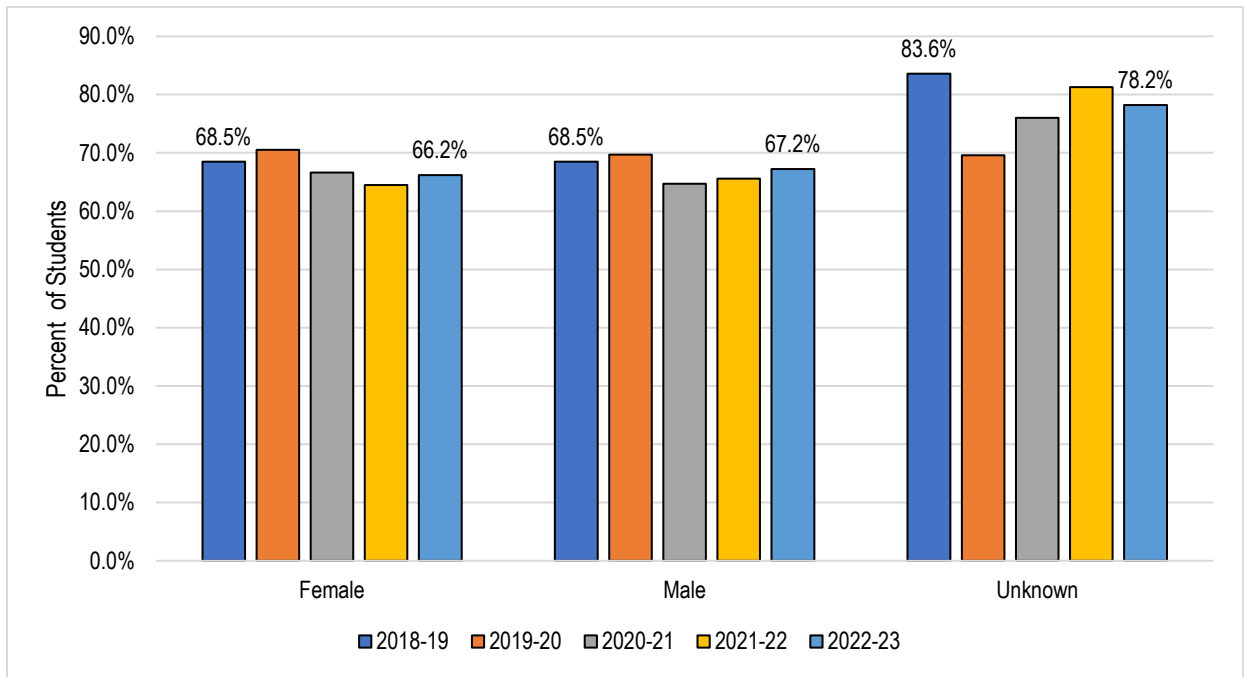


	2018-19	2019-20	2020-21	2021-22	2022-23	5 Year Change	5 Year Average
Female	74.0%	77.2%	74.0%	72.7%	74.7%	+0.7%	74.6%
Male	73.9%	77.1%	74.5%	73.5%	75.0%	+1.1%	74.9%
Unknown	72.2%	85.9%	85.3%	62.2%	76.2%	+4.0%	76.1%
Total	73.9%	77.2%	74.2%	73.0%	74.9%	+1.0%	74.7%

Source: CCCC MIS Referential Data Files.

On average, between 2018-19 and 2022-23, female students had a slightly lower success rate than male students (74.6% vs 74.9%, respectively). Over this period, the success rates for female and male students increased by 0.7% and 1.1%, respectively.

Course Success Rates by Gender: San Bernardino Valley College

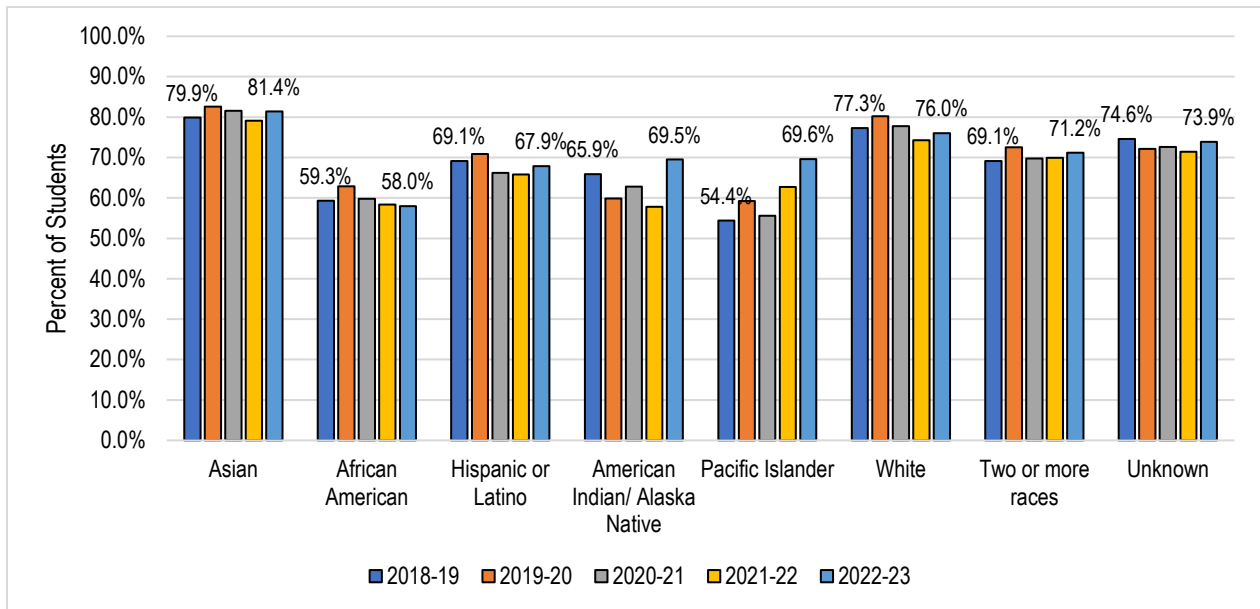


	2018-19	2019-20	2020-21	2021-22	2022-23	5 Year Change	5 Year Average
Female	68.5%	70.5%	66.6%	64.5%	66.2%	-2.3%	67.5%
Male	68.5%	69.7%	64.7%	65.6%	67.2%	-1.3%	67.4%
Unknown	83.6%	69.6%	76.0%	81.3%	78.2%	-5.4%	77.8%
Total	68.5%	70.2%	65.9%	65.0%	66.7%	-1.8%	67.4%

Source: CCCC MIS Referential Data Files.

On average, between 2018-19 and 2022-23, female and male students had a similar success rate (67.5% vs 67.4%, respectively). Over this period, the success rates for female and male students declined by 2.3% and 1.3%, respectively.

Course Success Rates by Race/Ethnicity: SBCCD



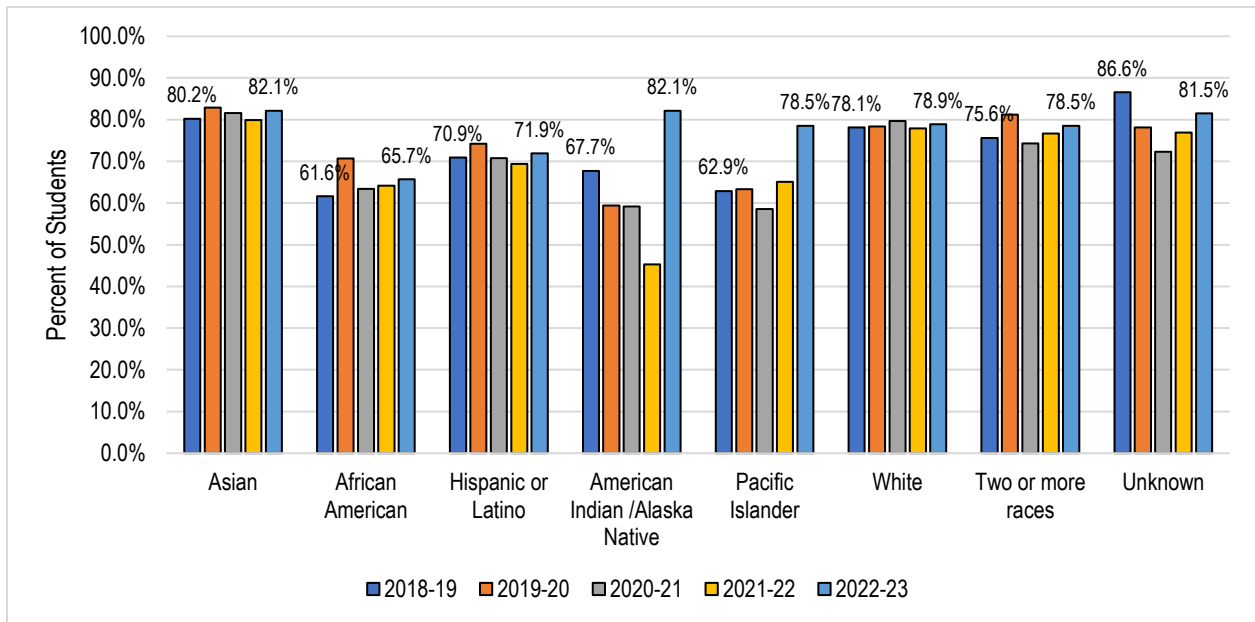
	2018-19	2019-20	2020-21	2021-22	2022-23	5 Year Change	5 Year Average
Asian	79.9%	82.6%	81.6%	79.1%	81.4%	+1.5%	81.0%
African American	59.3%	62.9%	59.8%	58.4%	58.0%	-1.3%	59.8%
Hispanic or Latino	69.1%	70.9%	66.2%	65.8%	67.9%	-1.2%	68.1%
American Indian /Alaska Native	65.9%	59.9%	62.8%	57.8%	69.5%	+3.6%	63.4%
Pacific Islander	54.4%	59.2%	55.6%	62.7%	69.6%	+15.2%	60.7%
White	77.3%	80.2%	77.8%	74.3%	76.0%	-1.3%	77.3%
Two or more races	69.1%	72.5%	69.8%	69.9%	71.2%	+2.1%	70.5%
Unknown	74.6%	72.1%	72.6%	71.4%	73.9%	-0.7%	72.5%
Total Average	70.3%	72.5%	68.7%	67.6%	69.3%	-1.0%	69.8%

Source: CCCC MIS Referential Data Files.

On average, between 2018-19 and 2022-23, Asian students had the highest success rate (81.0%). The second highest were White students with 77.3%. The lowest were African American students (59.8%) and Pacific Islander students (60.7%).

Over this period, the success rates of Pacific Islander (+15.2%), American Indian /Alaska Native (+3.6%), Asian (+1.5%), and Multiracial (+2.1%) students increased while the success rates of Hispanic (-1.2%), White (-1.3%), and African American (-1.3%) students decreased.

Course Success Rates by Race/Ethnicity: Crafton Hills College



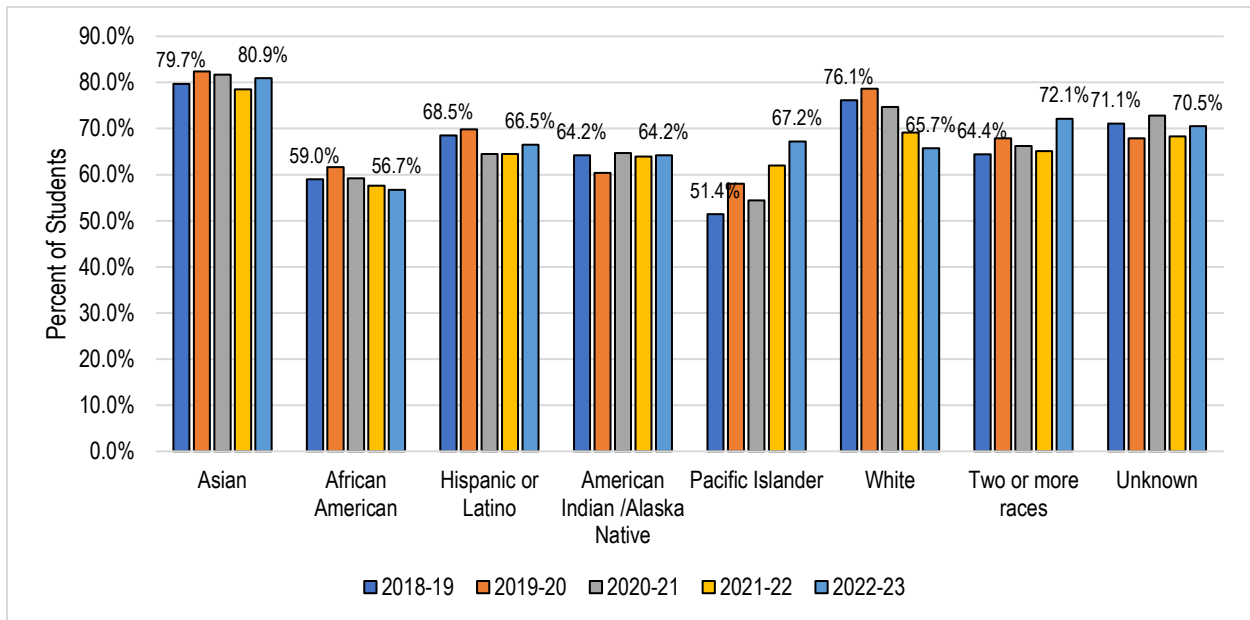
	2018-19	2019-20	2020-21	2021-22	2022-23	5 Year Change	5 Year Average
Asian	80.2%	82.9%	81.6%	79.9%	82.1%	+1.9%	81.4%
African American	61.6%	70.7%	63.4%	64.2%	65.7%	+4.1%	65.2%
Hispanic or Latino	70.9%	74.2%	70.8%	69.4%	71.9%	+1.0%	71.5%
American Indian /Alaska Native	67.7%	59.4%	59.2%	45.3%	82.1%	+14.4%	63.2%
Pacific Islander	62.9%	63.3%	58.6%	65.1%	78.5%	+15.6%	65.7%
White	78.1%	78.4%	79.7%	77.9%	78.9%	+0.8%	79.2%
Two or more races	75.6%	81.2%	74.3%	76.7%	78.5%	+2.9%	76.6%
Unknown	86.6%	78.1%	72.3%	76.9%	81.5%	-5.1%	76.9%
Total Average	73.9%	77.2%	74.2%	73.0%	74.9%	+1.0%	74.7%

Source: CCCC MIS Referential Data Files.

On average, between 2018-19 and 2022-23, Asian students had the highest success rate (81.4%). The second highest were White students with 79.2%. The lowest were American Indian /Alaska Native students (63.2%), African American students (65.2%), and Pacific Islander students (65.7%).

Over this period, the success rates of Pacific Islander (+15.6%), American Indian /Alaska Native (+14.4%), African American (+4.1%) and Hispanic (+1.0%) students increased.

Course Success Rates by Race/Ethnicity: San Bernardino Valley College



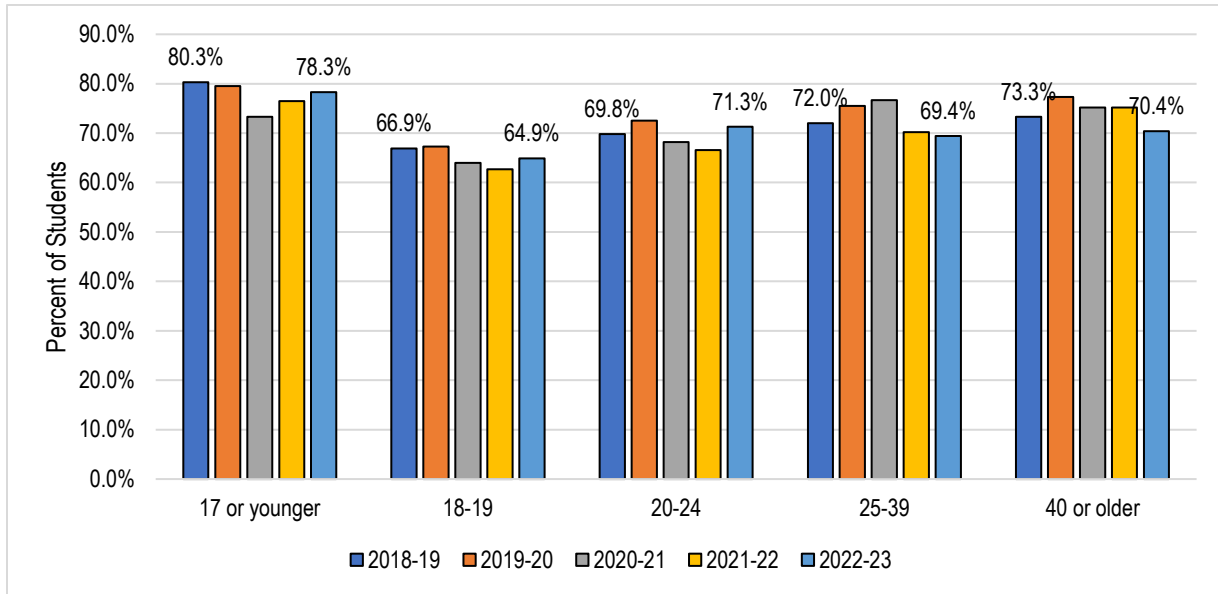
	2018-19	2019-20	2020-21	2021-22	2022-23	5 Year Change	5 Year Average
Asian	79.7%	82.4%	81.7%	78.5%	80.9%	+1.2%	80.7%
Black or African American	59.0%	61.6%	59.2%	57.6%	56.7%	-2.3%	59.0%
Hispanic or Latino	68.5%	69.8%	64.5%	64.5%	66.5%	-2.0%	66.9%
American Indian /Alaska Native	64.2%	60.4%	64.7%	63.9%	64.2%	0.0%	63.6%
Pacific Islander	51.4%	58.0%	54.4%	62.0%	67.2%	+15.8%	59.1%
White	76.1%	78.6%	74.7%	69.1%	72.1%	-4.0%	74.4%
Two or more races	64.4%	67.9%	66.2%	65.1%	65.7%	+1.3%	65.9%
Unknown	71.1%	67.9%	72.8%	68.3%	70.5%	-0.6%	69.9%
Total Average	68.5%	70.2%	65.9%	65.0%	66.7%	-1.8%	67.4%

Source: CCCC MIS Referential Data Files.

On average, between 2018-19 and 2022-23, Asian students had the highest success rate (80.7%). The second highest were White students with 74.4%. The lowest were Pacific Islander students (59.1%) and African American students (59.0%).

Over this period, the success rates of Pacific Islander (+15.8%), Multiracial (+1.3%), and Asian (+1.2%) students increased, while the success rate of White (-4.0%), Black or African American (-2.3%), and Hispanic (-2.0%) students decreased.

Course Success Rates by Age: SBCCD



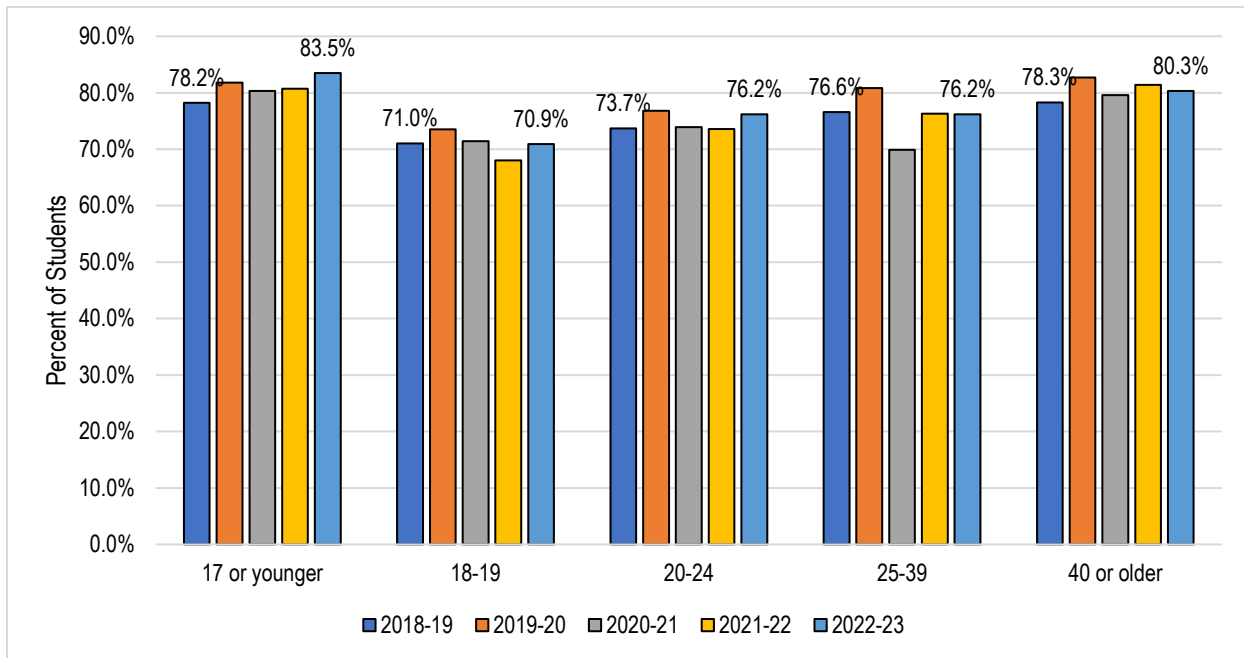
	2018-19	2019-20	2020-21	2021-22	2022-23	5 Year Change	5 Year Average
17 or younger	80.3%	79.5%	73.3%	76.5%	78.3%	-2.0%	77.6%
18-19	66.9%	67.3%	64.0%	62.7%	64.9%	-2.0%	65.3%
20-24	69.8%	72.5%	68.2%	66.6%	71.3%	+1.5%	69.8%
25-39	72.0%	75.5%	76.7%	70.2%	69.4%	-2.6%	72.3%
40 or older	73.3%	77.3%	75.2%	75.2%	70.4%	-2.9%	74.3%
Total Average	70.3%	72.5%	68.7%	67.6%	69.3%	-1.0%	69.8%

Source: CCCCO MIS Referential Data Files.

On average, between 2018-19 and 2022-23, students under 17 years old had the highest success rate (77.6%). The lowest success rate was seen in students 18-19 years old (65.3%).

Over this period, the success rate of students 20-24 years old (+1.5%) increased while the success rates of students under 17 years old (-2.0%), students 18-19 years old (-2.0%), students 25-39 years old (-2.6%), and students over 40 years old (-2.9%) decreased.

Course Success Rates by Age: Crafton Hills College



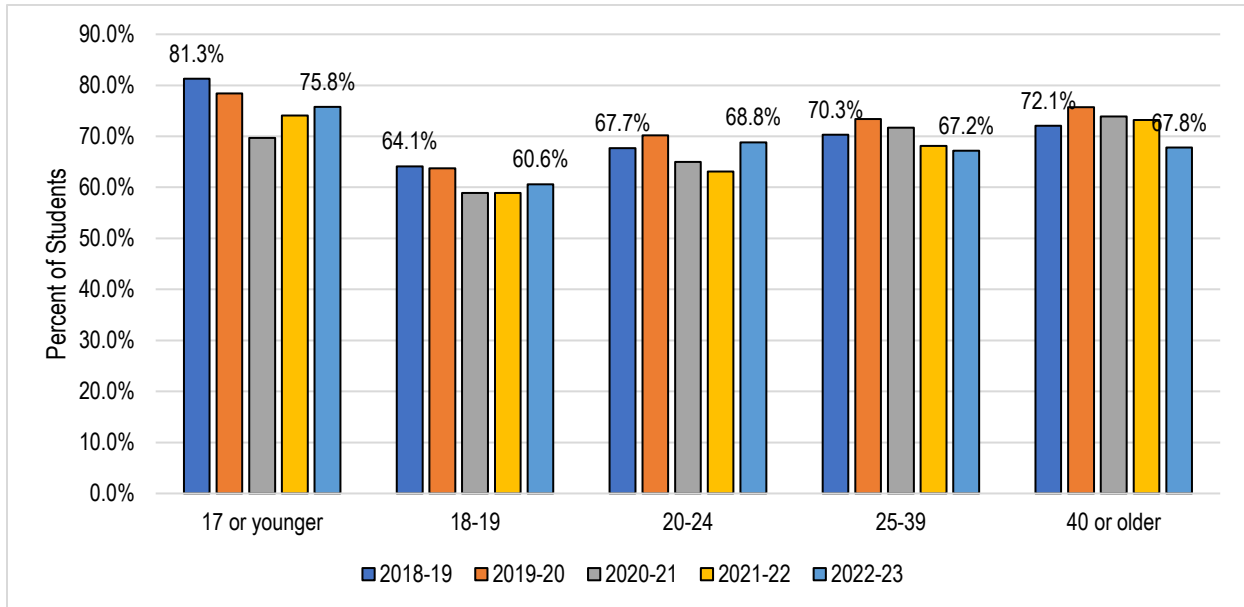
	2018-19	2019-20	2020-21	2021-22	2022-23	5 Year Change	5 Year Average
17 or younger	78.2%	81.8%	80.3%	80.7%	83.5%	+5.3%	81.0%
18-19	71.0%	73.5%	71.4%	68.0%	70.9%	-0.1%	71.1%
20-24	73.7%	76.8%	73.9%	73.6%	76.2%	+2.5%	74.8%
25-39	76.6%	80.8%	69.9%	76.3%	76.2%	-0.4%	74.4%
40 or older	78.3%	82.7%	79.6%	81.4%	80.3%	+2.0%	80.5%
Total Average	73.9%	77.2%	74.2%	73.0%	74.9%	+1.0%	74.7%

Source: CCCC MIS Referential Data Files.

On average, between 2018-19 and 2022-23, the age groups with the highest success rates were students under 17 years old (81.0%) and students over 40 years old (80.5%). The lowest success rate was seen in students 18-19 years old (71.1%).

Over this period, the success rates of students under 17 years old (+5.3%), students 20-24 years old (+2.5%), and students over 40 years old (+2.0%) increased while the success rates of students 25-39 years old (-0.4%) and students 18-19 years old (-0.1%) decreased.

Course Success Rates by Age: San Bernardino Valley College



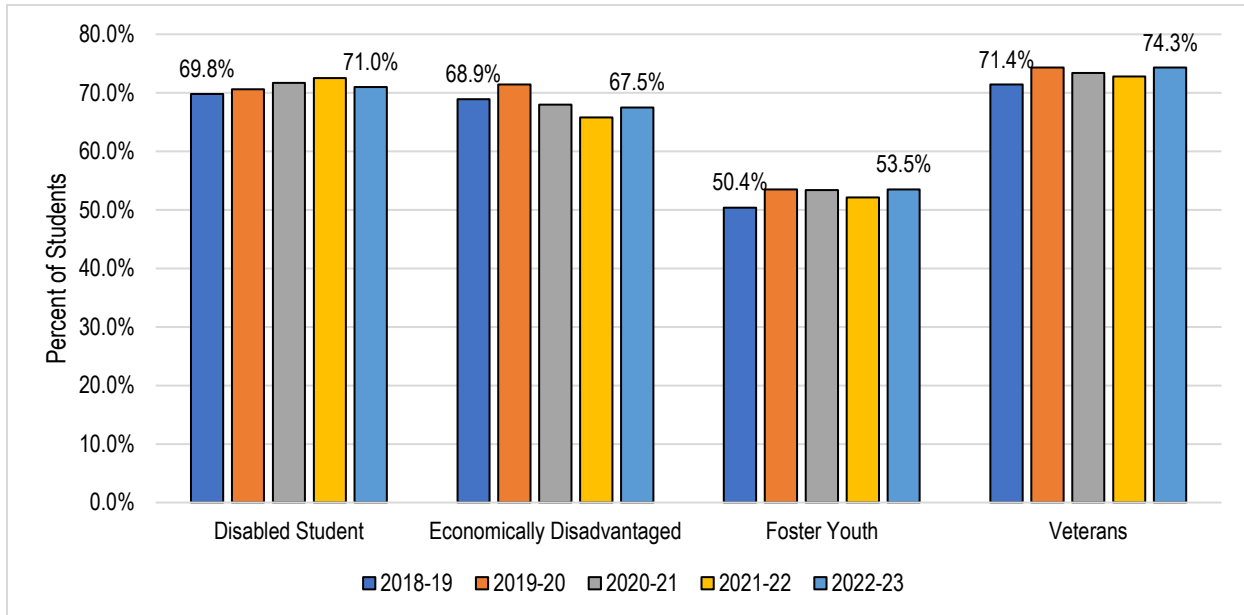
	2018-19	2019-20	2020-21	2021-22	2022-23	5 Year Change	5 Year Average
17 or younger	81.3%	78.4%	69.7%	74.1%	75.8%	-5.5%	75.9%
18-19	64.1%	63.7%	58.9%	58.9%	60.6%	-3.5%	61.4%
20-24	67.7%	70.2%	65.0%	63.1%	68.8%	+1.1%	67.1%
25-39	70.3%	73.4%	71.7%	68.1%	67.2%	-3.1%	70.4%
40 or older	72.1%	75.7%	73.9%	73.2%	67.8%	-4.3%	72.5%
Total Average	68.5%	70.2%	65.9%	65.0%	66.7%	-1.8%	67.4%

Source: CCCC MIS Referential Data Files.

On average, between 2018-19 and 2022-23, the age group with the highest success rate was students under 17 years old (75.9%), while the lowest success rate was seen in students 18-19 years old (61.4%).

Over this period, the success rates of students under 17 years old (-5.5%), students 18-19 years (-3.5%), students 25-39 years old (-3.1%), and students over 40 years old (-4.3%) declined, while the success rate of students 20-24 years old (+1.1%) increased.

Course Success Rates by Special Population: SBCCD



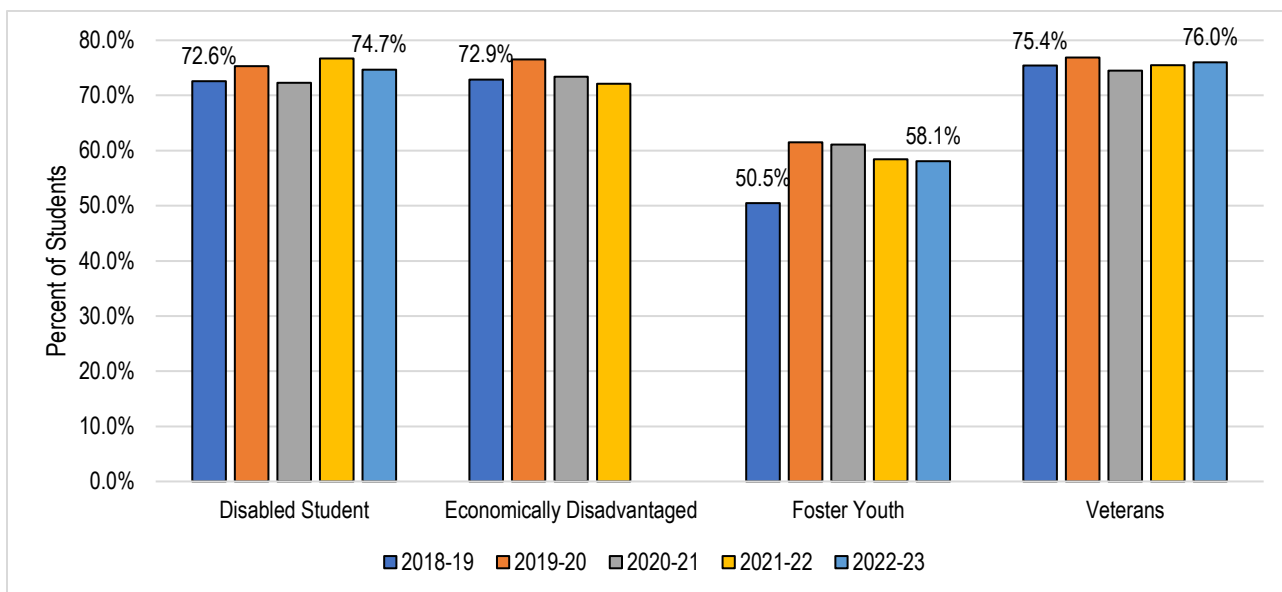
	2018-19	2019-20	2020-21	2021-22	2022-23	5 Year Change	5 Year Average
Disabled Student	69.8%	70.6%	71.7%	72.5%	71.0%	+1.2%	71.0%
Economically Disadvantaged	68.9%	71.4%	68.0%	65.8%	67.5%	-1.4%	68.6%
Foster Youth	50.4%	53.5%	53.4%	52.1%	53.5%	+3.1%	52.6%
Veterans	71.4%	74.3%	73.4%	72.8%	74.3%	+2.9%	73.2%
Total Average	70.3%	72.5%	68.7%	67.6%	69.3%	-1.0%	69.8%

Source: CCCC MIS Referential Data Files.

On average, between 2018-19 and 2022-23, veteran students had the highest success rate (73.2%). The average success rates of foster youth students (52.6 %) and economically disadvantaged students (68.6%) were lower than the average success rate for SBCCD (69.8%).

Over this period, the success rates of economically disadvantaged students decreased by 1.4%, while the success rates of the students with disabilities, foster youth students, and veteran students increased by 1.2% and 3.1% and 2.9%, respectively.

Course Success Rates by Special Population: Crafton Hills College



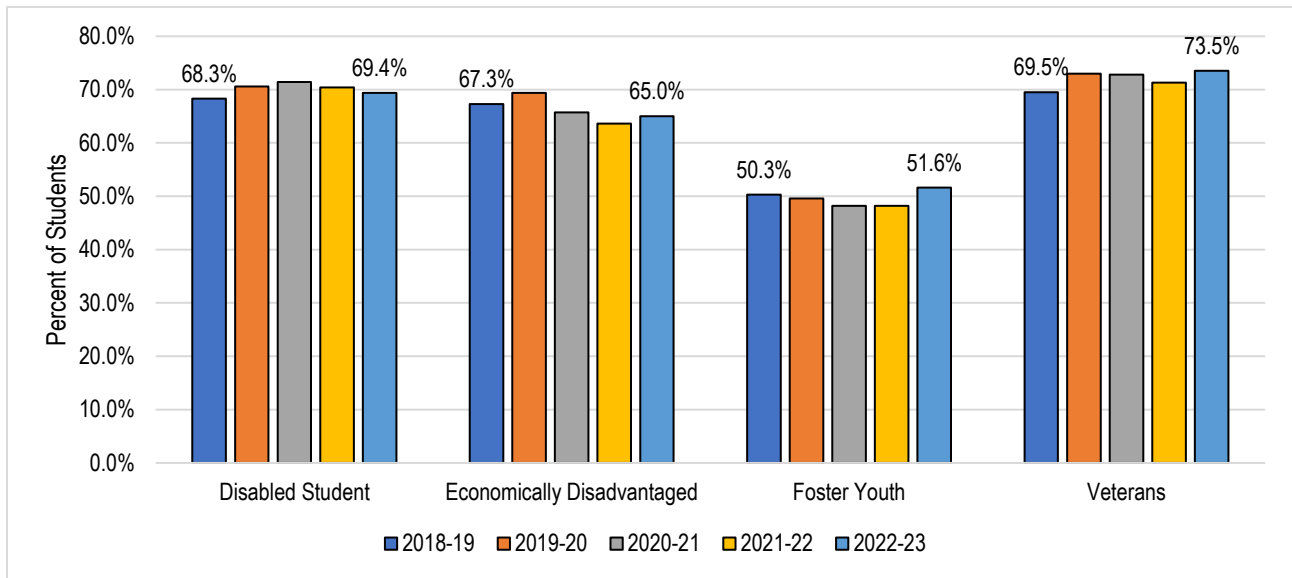
	2018-19	2019-20	2020-21	2021-22	2022-23	5 Year Change	5 Year Average
Disabled Student	72.6%	75.3%	72.3%	76.7%	74.7%	+2.1%	74.1%
Economically Disadvantaged	72.9%	76.5%	73.4%	72.1%	74.6%	+1.7%	74.0%
Foster Youth	50.5%	61.5%	61.1%	58.4%	58.1%	+7.6%	58.4%
Veterans	75.4%	76.9%	74.5%	75.5%	76.0%	+0.6%	75.7%
Total Average	73.9%	77.2%	74.2%	73.0%	74.9%	+1.0%	74.7%

Source: CCCC MIS Referential Data Files.

On average, between 2018-19 and 2022-23, veteran students had the highest success rate (75.7%). The average success rates of foster youth students (58.4%), economically disadvantaged students (74.0%), and students with disabilities (74.1%) were lower than the average overall success rate for Crafton Hills College (74.7%).

Over this period, the success rates of the veteran students, students with disabilities, and economically disadvantaged students increased by 7.6% and 2.1% and 1.7%, respectively.

Course Success Rates by Special Population: San Bernardino Valley College



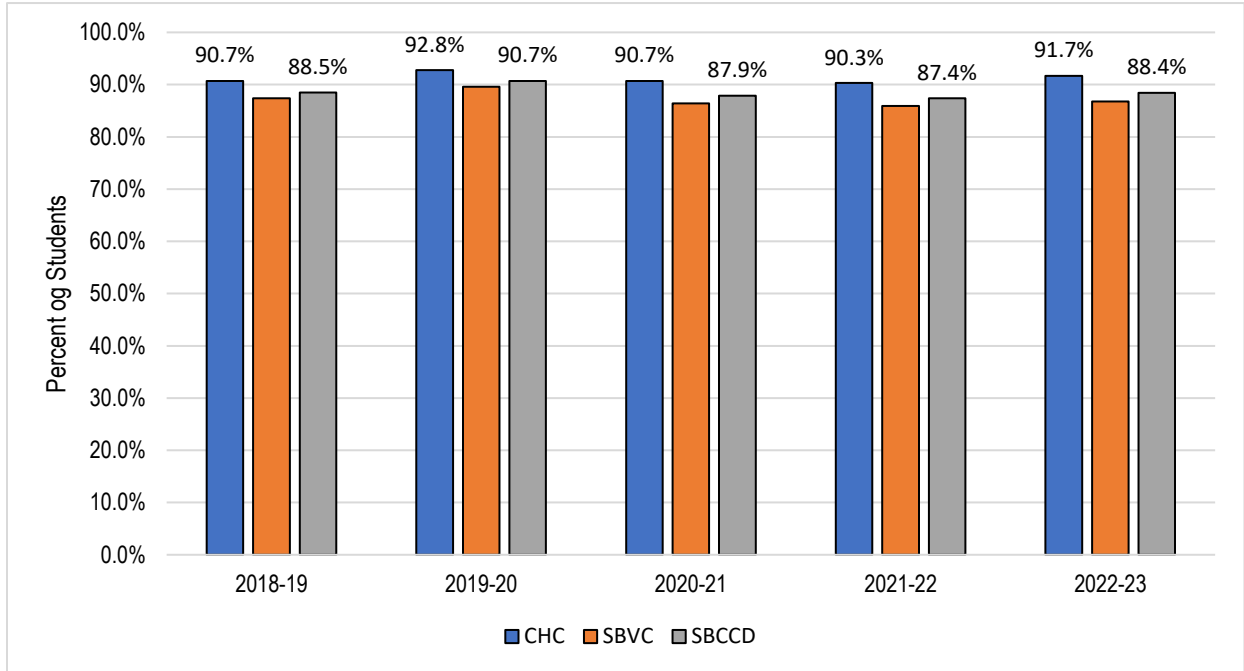
	2018-19	2019-20	2020-21	2021-22	2022-23	5 Year Change	5 Year Average
Disabled Student	68.3%	70.6%	71.4%	70.4%	69.4%	+1.1%	70.0%
Economically Disadvantaged	67.3%	69.4%	65.4%	63.6%	65.0%	-2.3%	66.6%
Foster Youth	50.3%	49.6%	48.2%	48.2%	51.6%	+1.3%	49.7%
Veterans	69.5%	73.0%	72.8%	71.3%	73.5%	+4.0%	72.0%
Total Average	68.5%	70.2%	65.9%	65.0%	66.7%	-1.8%	67.4%

Source: CCCC MIS Referential Data Files.

On average, between 2018-19 and 2022-23, veteran students had the highest success rate (72.0%). The average success rates of foster youth students (49.7%) and economically disadvantaged students (66.6%) were lower than the average overall success rate for San Bernardino Valley College (67.4%).

Over this period, the success rates of economically disadvantaged students decreased by 2.3%, while the success rates of the veteran students, foster youth students, and students with disabilities increased by 4.0% and 1.3% and 1.1%, respectively.

Course Retention Rates



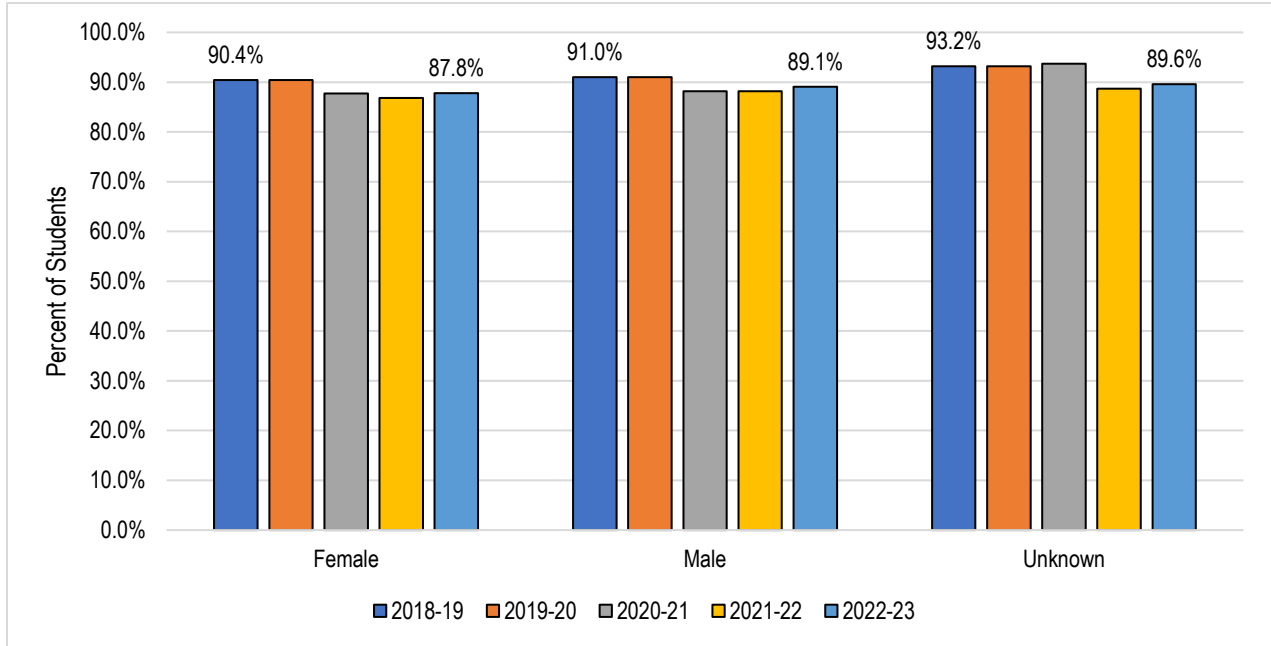
	2018-19	2019-20	2020-21	2021-22	2022-23	5 Year Change	5 Year Average
Crafton Hills College	90.7%	92.8%	90.7%	90.3%	91.7%	1.0%	91.3%
San Bernardino Valley College	87.4%	89.6%	86.4%	85.9%	86.8%	-0.6%	87.3%
SBCCD (Total)	88.5%	90.7%	87.9%	87.4%	88.4%	-0.1%	88.6%

Source: CCCC MIS Referential Data Files.

Retention Rate = (A, B, C, D, F, I*, IPP, P, NP, and FW Grades / A, B, C, D, F, FW, I*, IPP, P, NP, FW, and W Grades) * 100

The annual course retention rate of students from both colleges in the District declined by 0.1 percentage points, from 88.5% in 2018-19 to 88.4% in 2022-23, with a five-year average of 88.6%.

Course Retention Rates by Gender: SBCCD

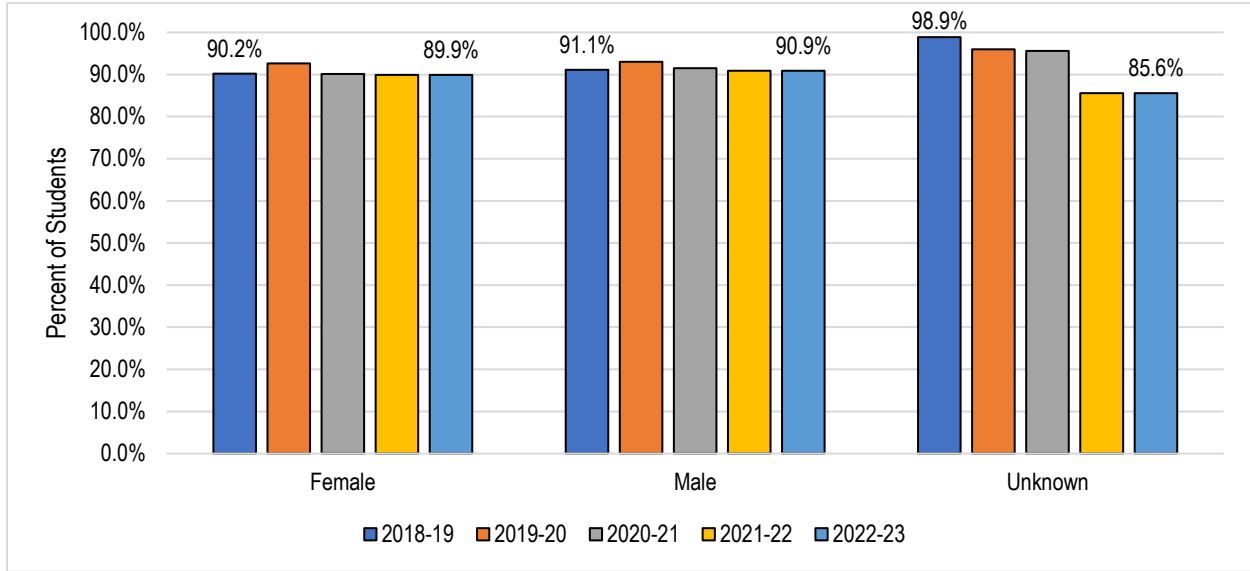


	2018-19	2019-20	2020-21	2021-22	2022-23	5 Year Change	5 Year Average
Female	88.1%	90.4%	87.7%	86.8%	87.8%	-0.3%	88.2%
Male	89.0%	91.0%	88.2%	88.2%	89.1%	+0.1%	89.2%
Unknown	92.8%	93.2%	93.7%	88.7%	89.6%	-3.2%	91.5%
Total Average	88.5%	90.7%	87.9%	87.4%	88.4%	-0.1%	88.6%

Source: CCCC MIS Referential Data Files.

On average, between 2018-19 and 2022-23, male students had a slightly higher retention rate than female students (89.2% & 88.2%, respectively). Over this period, the retention rate for female students decreased by 0.3%, while the retention rate for male students increased by 0.1%

Course Retention Rates by Gender: Crafton Hills College

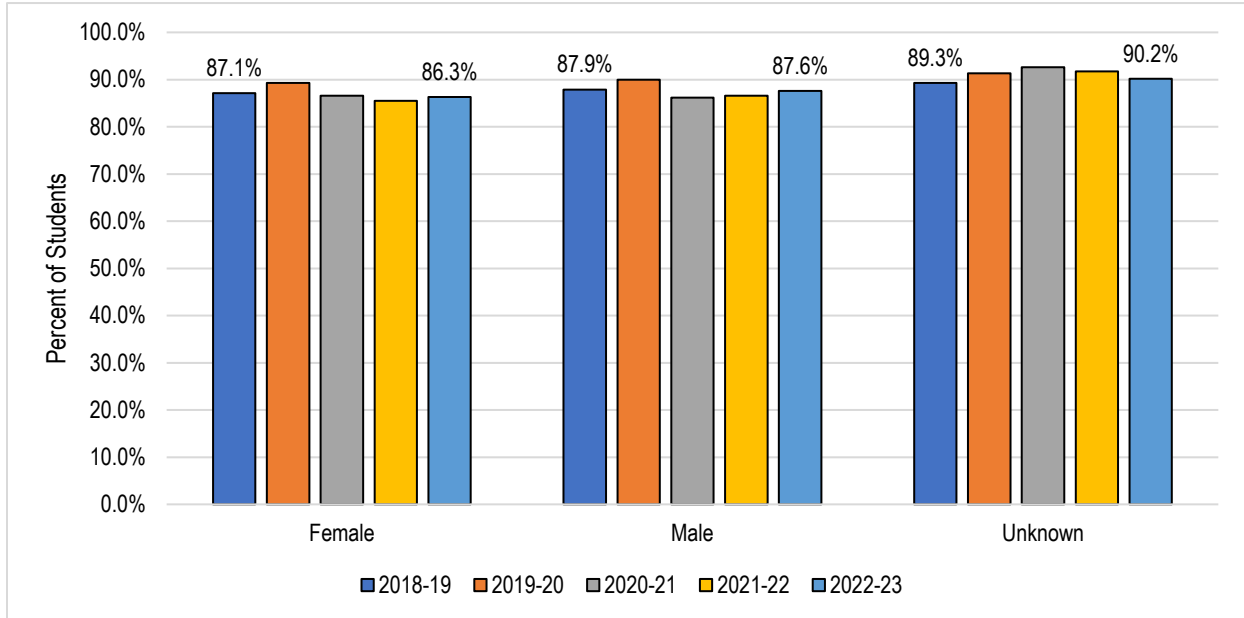


	2018-19	2019-20	2020-21	2021-22	2022-23	5 Year Change	5 Year Average
Female	90.2%	92.6%	90.1%	89.9%	89.9%	-0.3%	90.8%
Male	91.1%	93.0%	91.5%	90.9%	90.9%	-0.2%	91.8%
Unknown	98.9%	96.0%	95.6%	85.6%	85.6%	-13.3%	92.4%
Total Average	90.7%	92.8%	90.7%	90.3%	91.7%	1.0%	91.3%

Source: CCCC MIS Referential Data Files.

On average, between 2018-19 and 2022-23, male students had a higher retention rate than female students (91.8% & 90.8%, respectively). Over this period, the retention rates for female and male students declined by 0.3% and 0.2%, respectively.

Course Retention Rates by Gender: San Bernardino Valley College

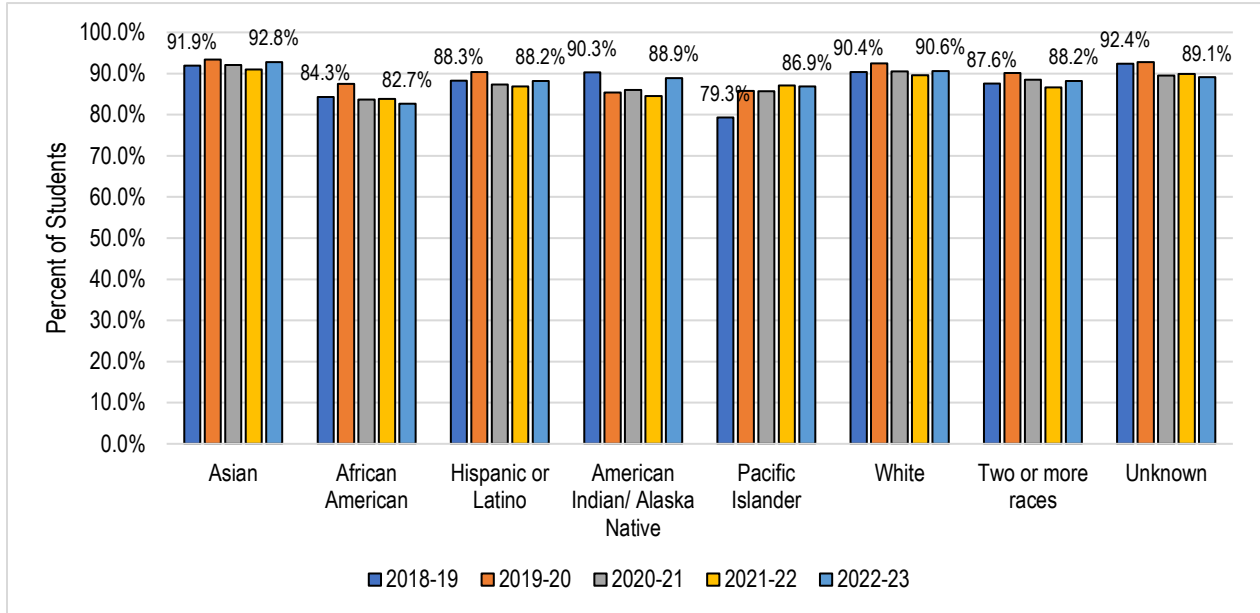


	2018-19	2019-20	2020-21	2021-22	2022-23	5 Year Change	5 Year Average
Female	87.1%	89.3%	86.6%	85.5%	86.3%	-0.8%	87.0%
Male	87.9%	90.0%	86.2%	86.6%	87.6%	-0.3%	87.8%
Unknown	89.3%	91.3%	92.6%	91.7%	90.2%	+0.9%	90.8%
Total Average	87.4%	89.6%	86.4%	85.9%	86.8%	-0.6%	87.3%

Source: CCCC MIS Referential Data Files.

Overall, between 2018-19 and 2022-23, male students had a slightly higher retention rate than female students (87.8% & 87.0%, respectively). Over this period, the retention rates for female and male students declined by 0.8% and 0.3%, respectively.

Course Retention Rates by Race/Ethnicity: SBCCD

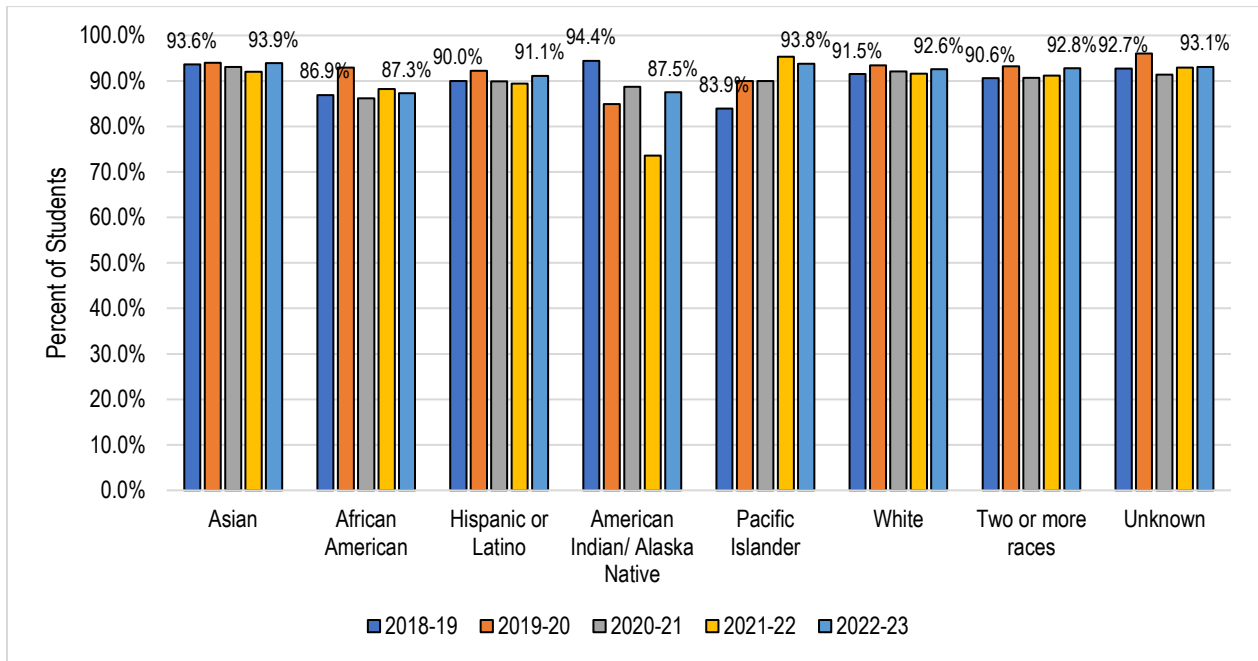


	2018-19	2019-20	2020-21	2021-22	2022-23	5 Year Change	5 Year Average
Asian	91.9%	93.4%	92.1%	91.0%	92.8%	+0.9%	92.3%
African American	84.3%	87.5%	83.7%	83.8%	82.7%	-1.6%	84.5%
Hispanic or Latino	88.3%	90.4%	87.3%	86.9%	88.2%	-0.1%	88.3%
American Indian /Alaska Native	90.3%	85.4%	86.0%	84.5%	88.9%	-1.4%	87.3%
Pacific Islander	79.3%	85.8%	85.7%	87.1%	86.9%	+7.6%	85.0%
White	90.4%	92.5%	90.5%	89.6%	90.6%	+0.2%	90.8%
Two or more races	87.6%	90.1%	88.5%	86.6%	88.2%	+0.6%	88.3%
Unknown	92.4%	92.8%	89.5%	89.9%	89.1%	-3.3%	90.9%
Total Average	88.5%	90.7%	87.9%	87.4%	88.4%	-0.1%	88.6%

Source: CCCC MIS Referential Data Files.

On average, between 2018-19 and 2022-23, Asian students had the highest retention rate (92.3%). The second highest were White students with 90.8%. The lowest were African American students with 84.5%. Over this period, the retention rates of Pacific Islander (+7.6%), Asian (+0.9%), and White (+0.2%) students increased while the retention rates of African American (-1.6%) and American Indian /Alaska Native (-1.4%) students decreased.

Course Retention Rates by Race/Ethnicity: Crafton Hills College

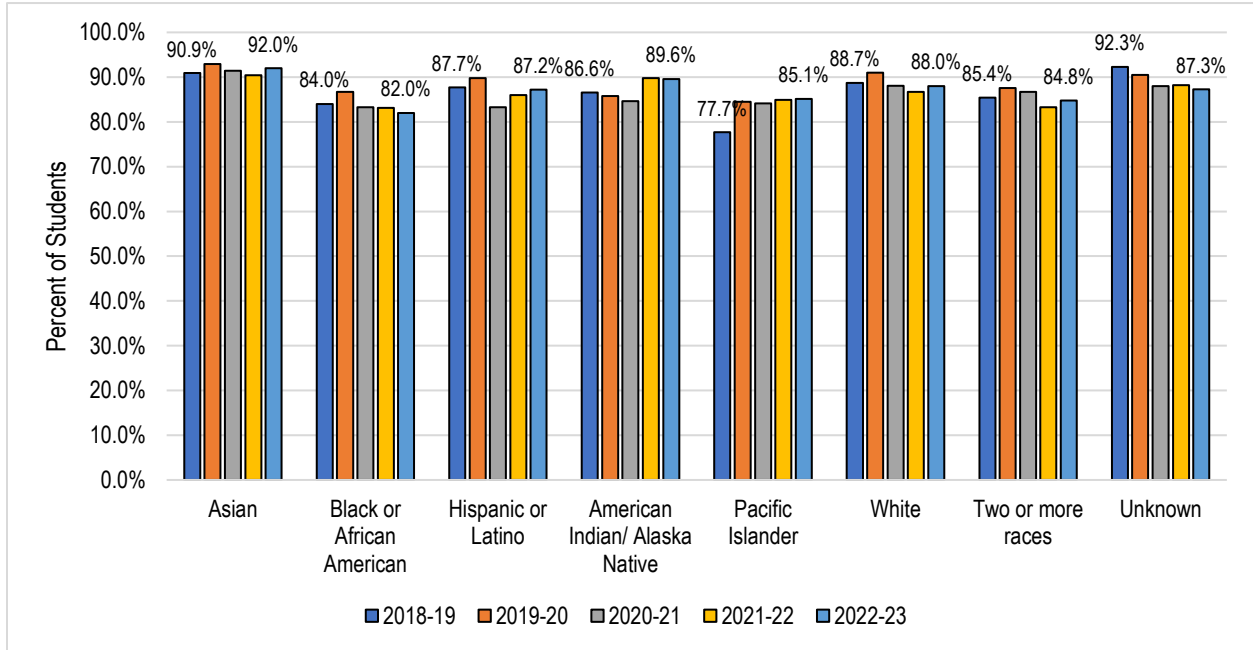


	2018-19	2019-20	2020-21	2021-22	2022-23	5 Year Change	5 Year Average
Asian	93.6%	94.0%	93.1%	92.0%	93.9%	+0.3%	93.4%
African American	86.9%	92.9%	86.2%	88.2%	87.3%	+0.4%	88.4%
Hispanic or Latino	90.0%	92.2%	89.9%	89.4%	91.1%	+1.1%	90.5%
American Indian /Alaska Native	94.4%	84.9%	88.7%	73.6%	87.5%	-6.9%	87.3%
Pacific Islander	83.9%	90.0%	90.0%	95.3%	93.8%	+9.9%	90.0%
White	91.5%	93.4%	92.1%	91.6%	92.6%	+1.1%	92.2%
Two or more races	90.6%	93.2%	90.7%	91.2%	92.8%	+2.2%	91.7%
Unknown	92.7%	96.0%	91.4%	92.9%	93.1%	+0.4%	93.6%
Total Average	90.7%	92.8%	90.7%	90.3%	91.7%	+1.0%	91.3%

Source: CCCC MIS Referential Data Files.

On average, between 2018-19 and 2022-23, Asian students had the highest retention rate (93.4%). The second highest were White students with 92.2%. The lowest were American Indian /Alaska Native students with 87.3%. Over this period, the retention rates of Pacific Islander (+9.9%), Hispanic (+1.1%), White (+1.1%), and African American (+0.4%) students increased while the retention rate of American Indian /Alaska Native (-6.9%) students decreased.

Course Retention Rates by Race/Ethnicity: San Bernardino Valley College



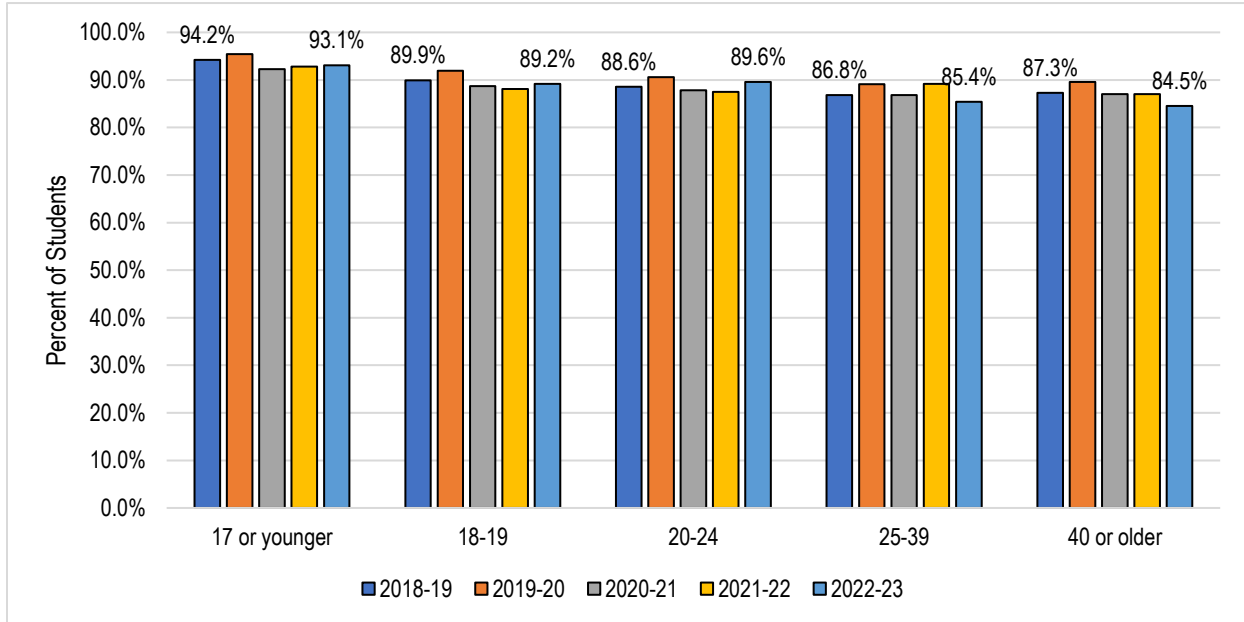
	2018-19	2019-20	2020-21	2021-22	2022-23	5 Year Change	5 Year Average
Asian	90.9%	92.9%	91.4%	90.4%	92.0%	+1.1%	91.5%
African American	84.0%	86.7%	83.3%	83.1%	82.0%	-2.0%	83.9%
Hispanic or Latino	87.7%	89.8%	83.3%	86.0%	87.2%	-0.5%	87.6%
American Indian /Alaska Native	86.6%	85.8%	84.6%	89.8%	89.6%	+3.0%	87.2%
Pacific Islander	77.7%	84.5%	84.1%	84.9%	85.1%	+7.4%	83.4%
White	88.7%	91.0%	88.1%	86.7%	88.0%	-0.7%	88.6%
Two or more races	85.4%	87.6%	86.7%	83.3%	84.8%	-0.6%	85.7%
Unknown	92.3%	90.5%	88.0%	88.2%	87.3%	-5.0%	89.2%
Total Average	87.4%	89.6%	86.4%	85.9%	86.8%	-0.6%	87.3%

Source: CCCC MIS Referential Data Files.

On average, between 2018-19 and 2022-23, Asian students had the highest retention rate (91.5%). The second highest were White students with 88.6%. The lowest were Pacific Islander Students (83.4%) and African American students (83.9%).

Over this period, the retention rates of Pacific Islander (+7.4%), American Indian /Alaska Native (+3.0%), and Asian (+1.1%) students increased, while the retention rates of African American (-2.0%), Hispanic (-0.5%), and White (-0.7%) students decreased.

Course Retention Rates by Age: SBCCD

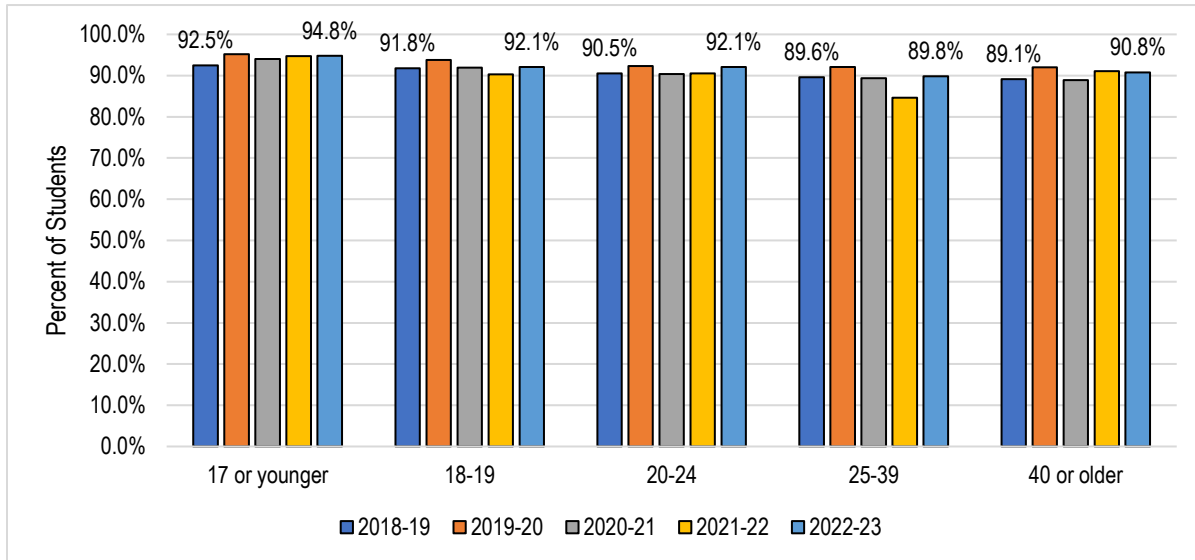


	2018-19	2019-20	2020-21	2021-22	2022-23	5 Year Change	5 Year Average
17 or younger	94.2%	95.4%	92.3%	92.8%	93.1%	-1.1%	93.6%
18-19	89.9%	91.9%	88.7%	88.1%	89.2%	-0.7%	89.7%
20-24	88.6%	90.6%	87.8%	87.5%	89.6%	+1.0%	88.9%
25-39	86.8%	89.1%	86.8%	89.2%	85.4%	-1.4%	87.3%
40 or older	87.3%	89.6%	87.0%	87.0%	84.5%	-2.8%	87.1%
Total Average	88.5%	90.7%	87.9%	87.4%	88.4%	-0.1%	88.6%

Source: CCCC MIS Referential Data Files.

On average, between 2018-19 and 2022-23, students under 17 years old had the highest retention rate (93.6%), while the average retention rate of students over 40 years old had the lowest retention rate (87.1%).

Course Retention Rates by Age: Crafton Hills College

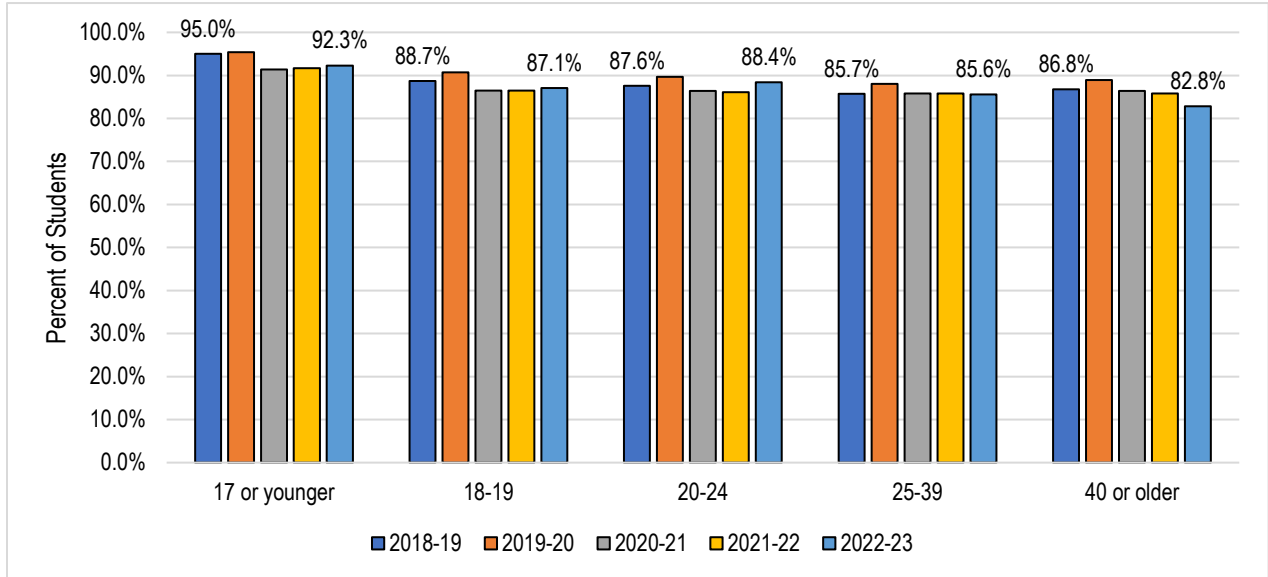


	2018-19	2019-20	2020-21	2021-22	2022-23	5 Year Change	5 Year Average
17 or younger	92.5%	95.2%	94.0%	94.7%	94.8%	+2.3%	94.3%
18-19	91.8%	93.8%	91.9%	90.3%	92.1%	+0.3%	92.0%
20-24	90.5%	92.3%	90.4%	90.5%	92.1%	+1.6%	91.1%
25-39	89.6%	92.1%	89.4%	84.6%	89.8%	+0.2%	88.2%
40 or older	89.1%	92.0%	88.9%	91.1%	90.8%	+1.7%	90.4%
Total Average	90.7%	92.8%	90.7%	90.3%	91.7%	+1.0%	91.3%

Source: CCCC MIS Referential Data Files.

On average, between 2018-19 and 2022-23, students under 17 years old had the highest retention rate (94.3%), while students 25-39 years old had the lowest average retention rate (88.2%).

Course Retention Rates by Age: San Bernardino Valley College

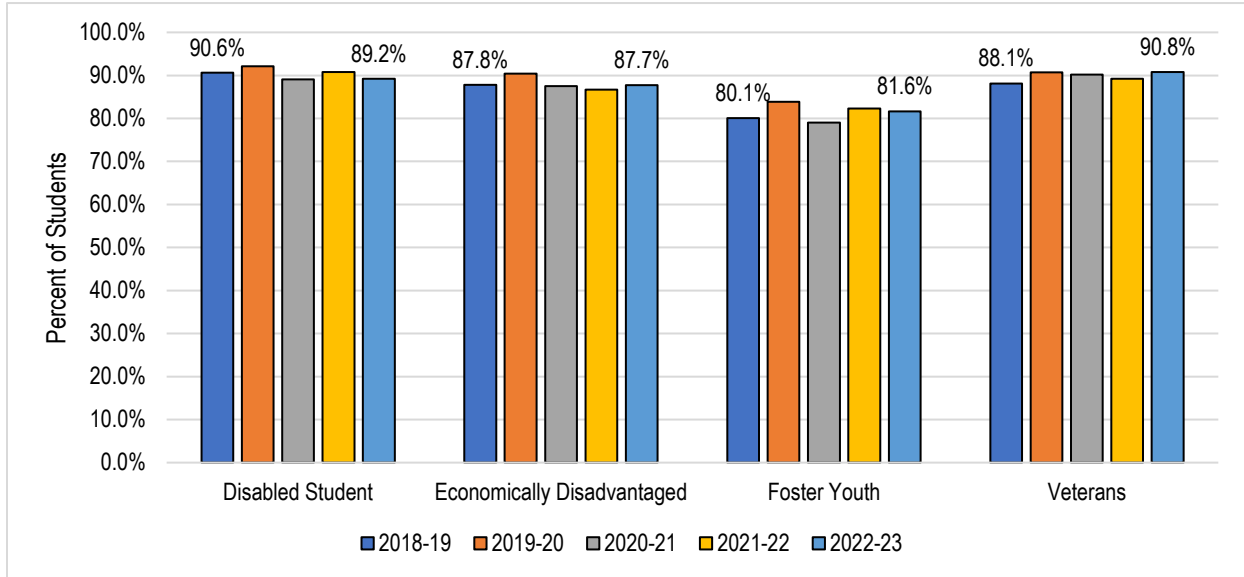


	2018-19	2019-20	2020-21	2021-22	2022-23	5 Year Change	5 Year Average
17 or younger	95.0%	95.4%	91.4%	91.7%	92.3%	-2.7%	93.2%
18-19	88.7%	90.7%	86.5%	86.5%	87.1%	-1.6%	88.1%
20-24	87.6%	89.7%	86.4%	86.1%	88.4%	+0.8%	87.7%
25-39	85.7%	88.0%	85.8%	85.8%	85.6%	-0.1%	86.2%
40 or older	86.8%	88.9%	86.4%	85.8%	82.8%	-4.0%	86.2%
Total Average	87.4%	89.6%	86.4%	85.9%	86.8%	-0.6%	87.3%

Source: CCCC MIS Referential Data Files.

On average, between 2018-19 and 2022-23, students under 17 years old had the highest retention rate (93.2%), while students over 40 years old had the lowest retention rate (86.2%).

Course Retention Rates by Special Population: SBCCD

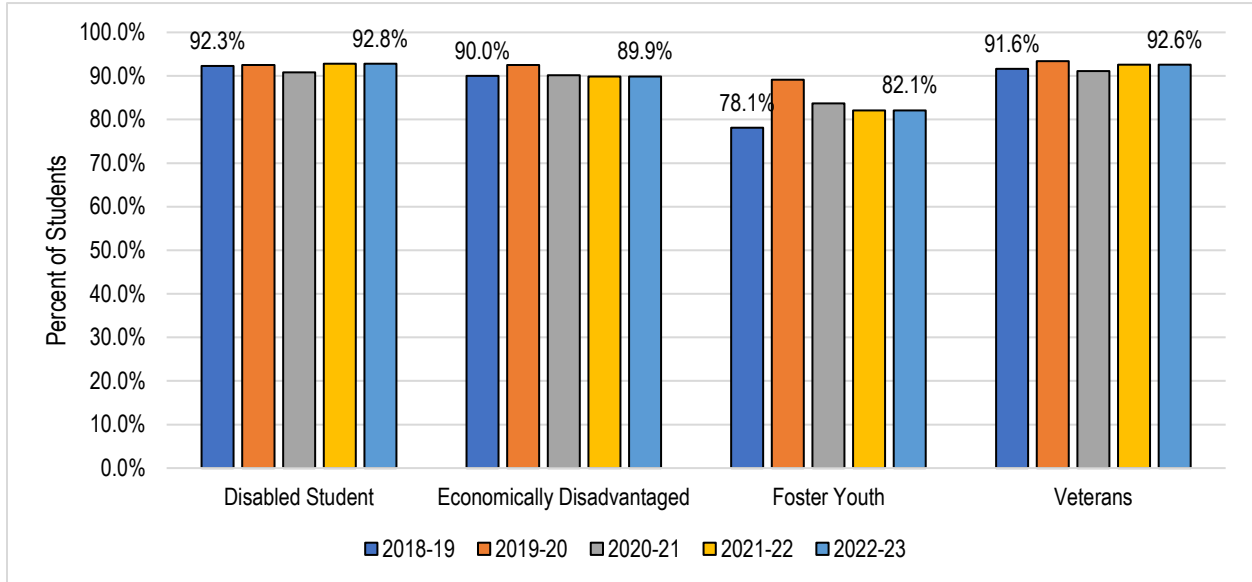


	2018-19	2019-20	2020-21	2021-22	2022-23	5 Year Change	5 Year Average
Disabled Student	90.6%	92.1%	89.1%	90.8%	89.2%	-1.4%	90.6%
Economically Disadvantaged	87.8%	90.4%	87.5%	86.7%	87.7%	-0.1%	88.2%
Foster Youth	80.1%	83.9%	79.0%	82.3%	81.6%	+1.5%	81.4%
Veterans	88.1%	90.7%	90.2%	89.2%	90.8%	+2.7%	89.8%
Total Average	88.5%	90.7%	87.9%	87.4%	88.4%	-0.1%	88.6%

Source: CCCC MIS Referential Data Files.

On average, between 2018-19 and 2022-23, students with disabilities had the highest retention rate (90.6%). The average retention rates of foster youth students (81.4%) and economically disadvantaged students (88.2%) were lower than the average retention rate for SBCCD (88.6%). Over this period, the retention rate of the students with disabilities and the economically disadvantaged students declined by 1.4% and 0.1%, respectively, while the retention rates of the foster youth and veteran students increased by 1.5% and 2.7%, respectively.

Course Retention Rates by Special Population: Crafton Hills College

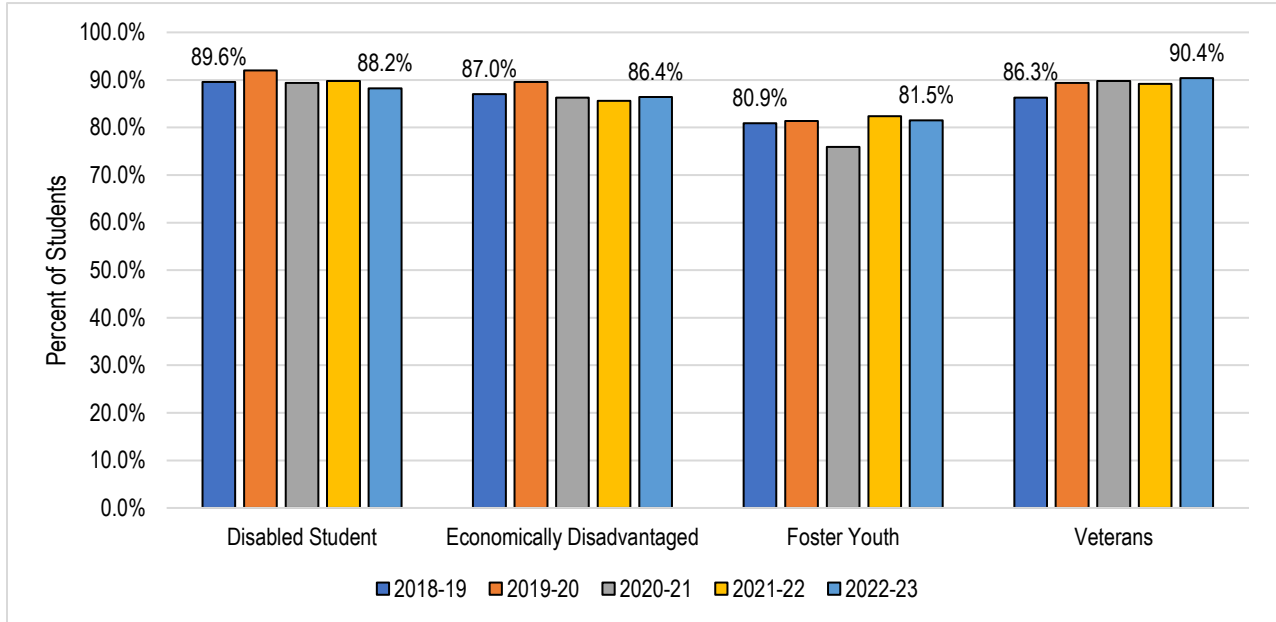


	2018-19	2019-20	2020-21	2021-22	2022-23	5 Year Change	5 Year Average
Disabled Student	92.3%	92.5%	90.8%	92.8%	91.4%	-0.9%	91.9%
Economically Disadvantaged	90.0%	92.5%	90.2%	89.9%	91.4%	+1.5%	90.8%
Foster Youth	78.1%	89.1%	83.7%	82.1%	81.7%	+3.6%	83.4%
Veterans	91.6%	93.4%	91.1%	92.6%	91.8%	+0.2%	92.1%
Total Average	90.7%	92.8%	90.7%	90.3%	91.7%	+1.0%	91.3%

Source: CCCC MIS Referential Data Files.

On average, between 2018-19 and 2022-23, veteran students had the highest retention rate (92.1%). The average retention rates of foster youth students (83.4%) and economically disadvantaged students (90.8%) were lower than the average retention rate for Crafton Hills College (91.3%). Over this period, the retention rate of the students with disabilities declined by 0.9%, while the retention rates of the foster youth, veteran, and economically disadvantaged students increased by 3.6% and 0.2% and 1.5%, respectively.

Course Retention Rates by Special Population: San Bernardino Valley College

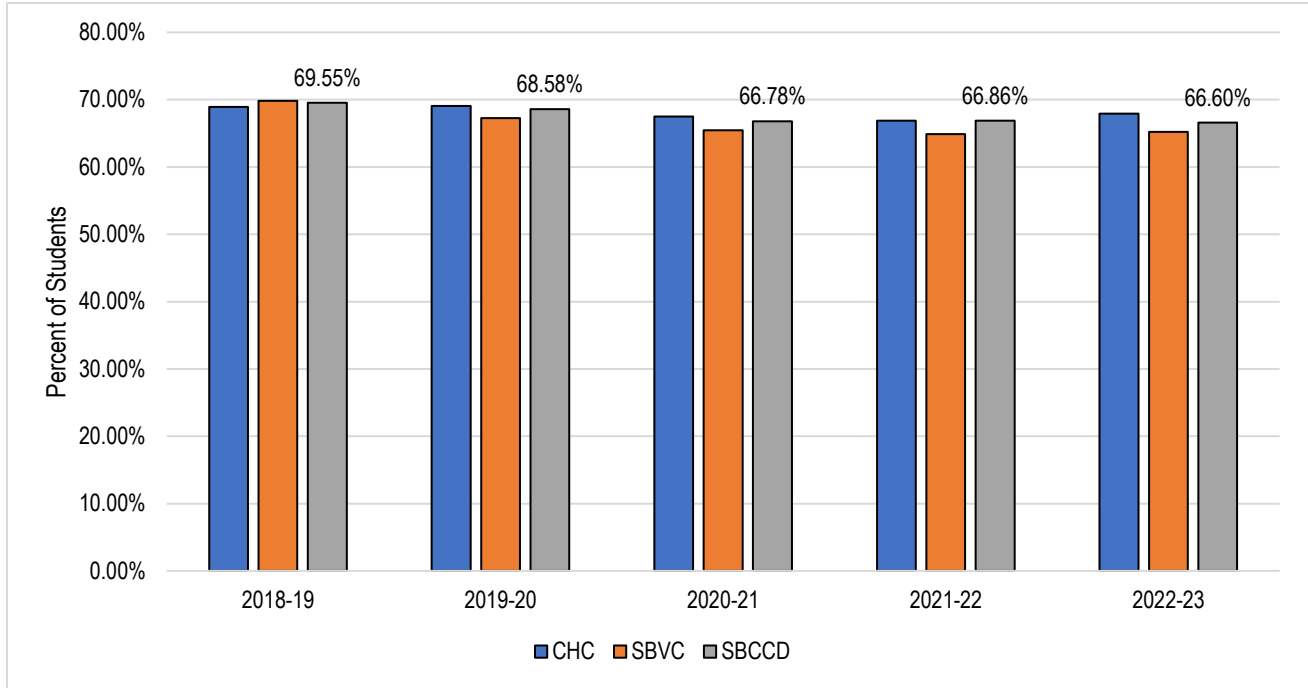


	2018-19	2019-20	2020-21	2021-22	2022-23	5 Year Change	5 Year Average
Disabled Student	89.6%	92.0%	89.4%	89.8%	88.2%	-1.4%	89.9%
Economically Disadvantaged	87.0%	89.6%	86.3%	85.6%	86.4%	-0.6%	87.2%
Foster Youth	80.9%	81.4%	75.9%	82.4%	81.5%	+0.6%	80.3%
Veterans	86.3%	89.4%	89.8%	89.2%	90.4%	+4.1%	88.9%
Total Average	87.4%	89.6%	86.4%	85.9%	86.8%	-0.6%	87.3%

Source: CCCC MIS Referential Data Files.

On average, between 2018-19 and 2022-23, students with disabilities had the highest average retention rate (89.9%). The average retention rates of foster youth students (80.3%) and economically disadvantaged students (87.2%) were lower than the average retention rate for San Bernardino Valley College (87.3%). Over this period, the retention rate of the students with disabilities declined by 1.4%, while the retention rate of the veteran students increased by 4.1%

Persistence Rate: Retained from Fall to Spring



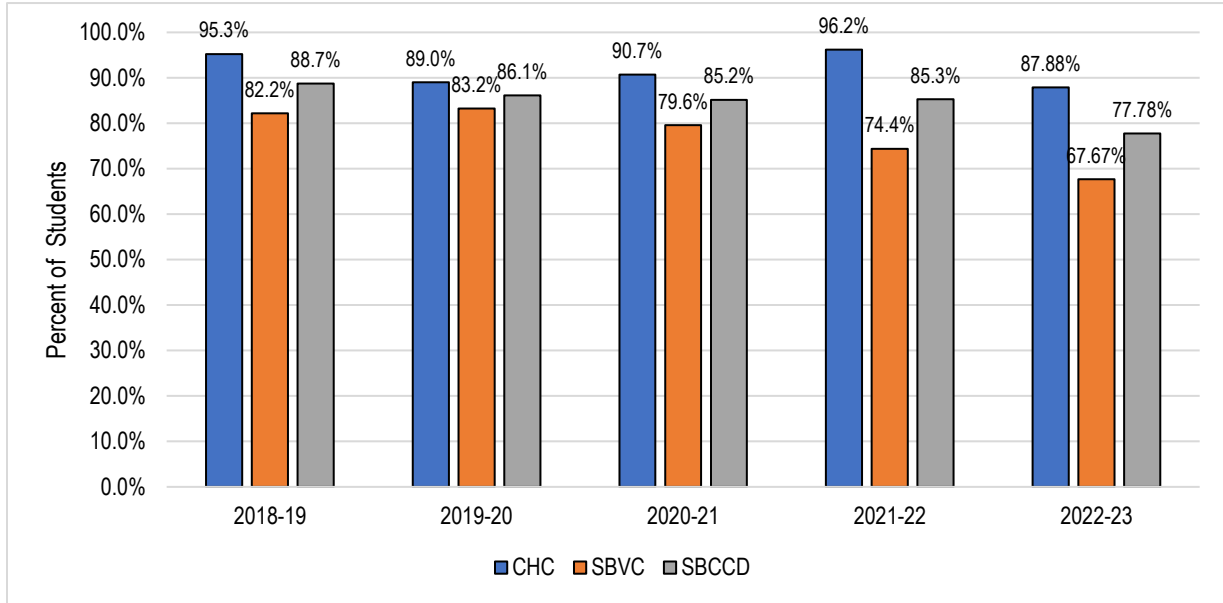
	2018-19	2019-20	2020-21	2021-22	2022-23	5 Year Change
Crafton Hills College	68.94%	69.09%	67.50%	66.89%	67.94%	-1.00%
San Bernardino Valley College	69.84%	67.24%	65.44%	64.87%	65.22%	-4.62%
SBCCD (Total)	69.55%	68.58%	66.78%	66.86%	66.60%	-2.95%

Source: SBCCD KPI Dashboard, KPI I.B

Definition: Number of students earning any grade in the initial Fall semester divided by the number of students who earned any grade in the subsequent Spring semester, excluding students who earned a degree or certificate and/or transferred to a four-year college or university.

The persistence rate of students from both colleges in the District decreased by 2.95 percentage points, from 69.55% in 2018-19 to 66.60% in 2022-23.

Licensure and Certification Pass Rates



	2018-19	2019-20	2020-21	2021-22	2022-23
Crafton Hills College	95.25%	89.00%	90.73%	96.20%	87.88%
San Bernardino Valley College	82.17%	83.23%	79.59%	74.36%	67.67%
SBCCD (Total)	88.71%	86.12%	85.16%	85.28%	77.78%

Source: SBCCD KPI Dashboard, KPI II.5

Between 2018-19 and 2022-23, the average licensure/certification pass rate is 84.61% during this five-year period, with a high of 88.71% in 2018-19 and a low of 77.78% in 2022-23.